

Converting Colors

XYZ(58.1931, 58.7280, 57.2707)

Have a look what the booklet for
XYZ(58.1931, 58.7280, 57.2707)
contains.

XYZ(58.5115, 59.0552, 57.6051)	3
<i>Conversions</i>	4
<i>Details</i>	6
<i>Harmonies</i>	12
<i>Previews</i>	24
<i>Color Blindness Simulation</i>	28
<i>CSS Examples</i>	31

Color

**XYZ(58.5115, 59.0552,
57.6051)**

Conversions

Conversions Part 1

Format	Color
Hex	DAC6BF
RGB	218, 198, 191
RGB Percent	85%, 78%, 75%
CMY	0.1451, 0.2235, 0.2510
CMYK	0.00, 0.09, 0.12, 0.15
HSL	16°, 27%, 80%
HSV	16°, 12%, 85%
XYZ	58.5115, 59.0552, 57.6051
YIQ	203.1820, 14.1670, 2.0630

Conversions

Conversions Part 2

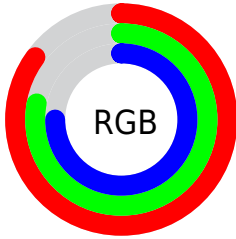
Format	Color
R _Y B	218, 200, 191
Decimal	14337727
CIE Lab	81.32, 5.85, 6.04
CIE LCh	81, 8.408, 45.910
Yxy	59.0552, 0.3340, 0.3371
Android (android.graphics.Color)	4292527807 (0xFFDAC6BF)
YUV	203.1820, -6.0057, 12.9954
Hunter-Lab	76.8474, 1.4268, 9.3491

Details

The XYZ color **58.5115, 59.0552, 57.6051** is a light color, and the websafe version is hex **CCCCCC**. A complement of this color would be **57.4347, 62.7256, 75.4104**, and the grayscale version is **56.9108, 59.8745, 65.2034**.

A 20% lighter version of the original color is **93.7885, 99.4954, 102.2570**, and **29.6650, 29.5680, 28.1884** is the 20% darker color. If you saturate the color by 10%, you get **52.7934, 51.1764, 44.7308**, and if you desaturate by 10%, it is **64.9834, 67.8688, 72.4938**.

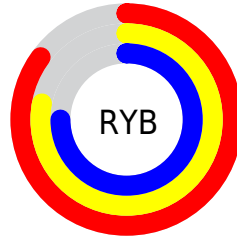
Distribution



Red (85%)

Green (78%)

Blue (75%)



Red (85%)

Yellow (78%)

Blue (75%)

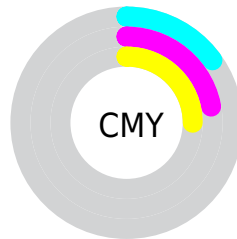


Cyan (0%)

Magenta (9%)

Yellow (12%)

Black (15%)



Cyan (15%)

Magenta (22%)

Yellow (25%)

Brightness & Saturation Gradients

These gradients show how the XYZ color 58.5115, 59.0552, 57.6051 changes by changing the brightness by 10 percent. The first figure shows a shift by +10% for each color and the second figure -10%.

Similar to the brightness gradients but the following saturation gradients show a change of the XYZ color 58.5115, 59.0552, 57.6051 by changing the saturation by 10% instead.

■ 58.5115, 59.0552,
57.6051

■ 58.5115, 59.0552,
57.6051

409.0124,
421.1064, 433.2699

■ 42.4649, 42.6576,
41.0787

■ 101.7860,
103.4579, 102.8567

■ 29.6582, 29.6165,
28.0604

129.7446,
132.2317, 132.4189

■ 19.7260, 19.5477,
18.1317

162.4046,
165.8997, 167.1634

■ 12.3032, 12.0667,
10.8742

200.1313,
204.8463, 207.5088

■ 7.0242, 6.7891,
5.8692

243.2901,
249.4559, 253.8736

■ 3.5237, 3.3306,
2.6982

292.2463,

■ 1.4364, 1.3067,

300.1129, 306.6764

0.9425

347.3653,
357.2016, 366.3356

■ 0.2819, 0.1463,
0.0000

■ 0.0000, 0.0000,
0.0000

■ 58.5115, 59.0552,
57.6051

■ 58.5115, 59.0552,
57.6051

■ 52.7934, 51.1764,
44.7308

■ 64.9834, 67.8688,
72.4938

■ 47.7963, 44.1939,
33.7803

■ 72.2306, 77.6388,
89.4746

■ 43.4918, 38.0775,
24.6614

■ 80.0535, 88.3052,
107.4331

■ 39.8482, 32.7928,
17.2732

■ 82.7237, 93.6456,
108.3231

■ 36.8308, 28.3029,
11.5046

■ 34.4015, 24.5677,
7.2317

■ 32.5178, 21.5437,
4.3123

■ 31.1304, 19.1821,
2.5758

■ 30.3548, 17.7877,
1.8335

Harmonies

Analogous

The Analogous color harmony consists of three colors that are next to each other on the color wheel.



59.4391, 59.0552, 61.6874



58.5115, 59.0552, 57.6051



56.9559, 59.0552, 55.3738

Triad

The Triadic color harmony groups three colors that are evenly spaced from another and form a triangle on the color wheel.



58.5115, 59.0552, 57.6051



52.9198, 59.0552, 61.9765



57.0605, 59.0552, 74.0523

Complementary

The Complementary color scheme is a pair of colors which are on the opposite of each other on the color wheel.



58.5115, 59.0552, 57.6051



57.4347, 62.7256, 75.4104

Split Complementary

Split-complementary colors differ from the complementary color scheme. The scheme consists of three colors, the original color and two neighbors of the complement color.



55.3125, 59.0552, 74.1396



58.5115, 59.0552, 57.6051



52.9465, 59.0552, 66.9875

Square

The Square scheme is like the rectangle color scheme, but the four colors are evenly spaced on the color wheel.



58.5115, 59.0552, 57.6051



53.7407, 59.0552, 57.8072



53.8144, 59.0552, 71.4968



58.5895, 59.0552, 71.2639

Rectangle

The Rectangle color scheme consists of four colors that form a rectangle on the color wheel.



58.5115, 59.0552, 57.6051



55.7834, 59.0552, 55.1574



53.8144, 59.0552, 71.4968



56.4785, 59.0552, 74.4032

Sweetspot

The Sweet Spot groups the original color and five complimentary colors.



58.5131, 59.0578, 57.6064



91.0882, 94.6350, 99.6917



59.3342, 56.8835, 69.6455



19.3415, 20.0451, 20.9791



0.0000, 0.0000, 0.0000



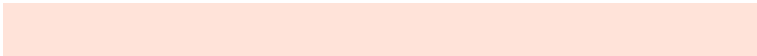
20.3446, 21.4041, 23.3091

Same Dimension

The Same Dimension uses a secret algorithm to generate beautiful new colors.



58.5131, 59.0578, 57.6064



81.1115, 81.0159, 76.8379



61.6745, 65.3806, 58.6601



13.3293, 13.5979, 13.6477



18.2599, 10.8053, 1.1232



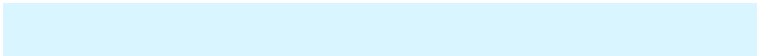
1.2526, 0.8392, 0.0960

Inverse Universe

The Inverse Universe completely reimagines the original color for something new.



57.4347, 62.7256, 75.4104



79.2669, 87.2852, 107.2777



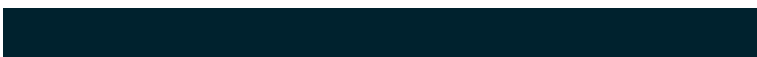
54.2785, 56.4131, 74.3583



13.1441, 14.2280, 16.7056



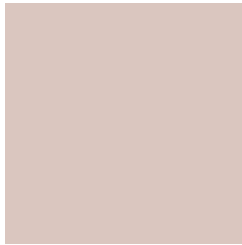
15.3555, 18.5803, 42.5154



1.0630, 1.3401, 2.7771

Previews

White Background



This preview shows how the XYZ color 58.5115, 59.0552, 57.6051 looks on a white background.

Color Contrast Check

Large Text (above 18pt) WCAG AA × Fail

Any Text WCAG AA × Fail

Large Text (above 18pt) WCAG AAA × Fail

Any Text WCAG AAA × Fail

Black Background



This preview shows how the XYZ color 58.5115, 59.0552, 57.6051 looks on a black background.

Color Contrast Check

Large Text (above 18pt) WCAG AA ✓ Pass

Any Text WCAG AA ✓ Pass

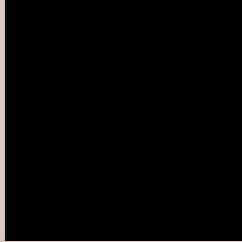
Large Text (above 18pt) WCAG AAA ✓ Pass

Any Text WCAG AAA ✓ Pass

If you want to check with other color combinations, try the [Color Contrast Checker](#).

XYZ 58.5115, 59.0552, 57.6051

Background



This preview shows how black text looks on a background with the XYZ color 58.5115, 59.0552, 57.6051.

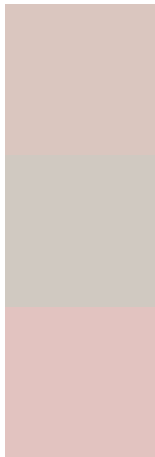


This preview shows how white text looks on a background with the XYZ color 58.5115, 59.0552,

Color Blindness Simulation

Color vision deficiency is a very complex topic, and I could not describe the different causes any better than Wikipedia does, so if you want to learn more, you should check out their [article about color blindness](#).

Dichromacy



Original Color

58.5115, 59.0552, 57.6051

Protanopia

56.5247, 59.0334, 58.8675

Deuteranopia

60.3936, 59.0047, 58.0751



Tritanopia

60.9668, 59.0555, 69.1583

Trichromacy



Original Color

58.5115, 59.0552, 57.6051

Protanomaly

57.3201, 59.1114, 58.2577

Deuteranomaly

59.6858, 58.9736, 58.1064

Tritanomaly

60.0346, 59.0073, 64.7253

Monochromacy



Original Color

58.5115, 59.0552, 57.6051

Achromatopsia

56.7640, 59.7202, 65.0353

Achromatomaly

57.2079, 59.3067, 62.4650

CSS Examples

Text

The CSS property to change the color of the text to XYZ 58.5115, 59.0552, 57.6051 is called "color". The color property can be set on classes, ids or directly on the HTML element.

This example shows how text in the color `rgb(218, 198, 191)` looks like.

```
.text, #text, p{  
    color:rgb(218, 198, 191)  
}
```

If you want to add a text shadow in that color use the text-shadow property, you can generate a text shadow directly with our [CSS Text Shadow Generator](#).

Here you see how black text with a 4 pixel rgb(218, 198, 191) colored shadow looks like.

```
.shadow{ text-shadow: 4px 4px 2px rgb(218, 198, 191) }
```

Border

The CSS property to change the border of an element to XYZ 58.5115, 59.0552, 57.6051 is called "border". The border property can be set on classes, ids or directly on the HTML element.

This example shows the color as border, it can be applied via the CSS property "border" or "border-color".

```
.border, #border, table{ border:4px solid rgb(218, 198, 191) }
```


If only the border color should be changed use the property `border-color`.

```
.border{ border-color:rgb(218, 198, 191) }
```

If you want to add a box shadow in that color use:

Here you see how a box with a 4 pixel `rgb(218, 198, 191)` colored shadow looks like.

```
.boxshadow{ -moz-box-shadow:4px 4px 4px  
4px rgb(218, 198, 191); -webkit-box-  
shadow:4px 4px 4px 4px rgb(218, 198, 191);  
box-shadow:4px 4px 4px 4px rgb(218, 198,  
191) }
```

Background

The CSS property to change the background color of an element to XYZ 58.5115, 59.0552, 57.6051 is called "background". The background property can be set on classes, ids or directly on the HTML element.

```
.background, #background, body{  
background: rgb(218, 198, 191) }
```

If only the background color should be changed can be used:

```
.background{ background-color: rgb(218,  
198, 191) }
```

This example shows the color as background, it is applied via the CSS property "background".

To optimize and compress your CSS code, you can use our [online CSS compressor and optimizer](#) based on csstidy. If you want to create a linear or radial gradient as background or border, check our [CSS Gradient Generator](#).

Hey! You found this booklet interesting? Support Converting Colors with the new Membership Option!

The pro membership hides all ads, plus gives you double the colors in the color bucket, and more awesome pro features!

[Learn more, Memberships starting at \\$2.50/m!](#)

**Follow me
on Twitter!**

@ConvertingColor