

Converting Colors

XYZ(58.1987, 56.3714, 52.1468)

Have a look what the booklet for
XYZ(58.1987, 56.3714, 52.1468)
contains.

XYZ(58.2210, 56.3731, 52.0685)	3
<i>Conversions</i>	4
<i>Details</i>	6
<i>Harmonies</i>	12
<i>Previews</i>	24
<i>Color Blindness Simulation</i>	28
<i>CSS Examples</i>	31

Color

**XYZ(58.2210, 56.3731,
52.0685)**

Conversions

Conversions Part 1

Format	Color
Hex	E2BEB6
RGB	226, 190, 182
RGB Percent	89%, 75%, 71%
CMY	0.1137, 0.2549, 0.2863
CMYK	0.00, 0.16, 0.19, 0.11
HSL	11°, 43%, 80%
HSV	11°, 19%, 89%
XYZ	58.2210, 56.3731, 52.0685
YIQ	199.8520, 24.0240, 5.1440

Conversions

Conversions Part 2

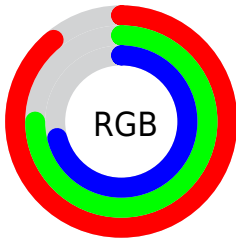
Format	Color
R _Y B	226, 192, 182
Decimal	14859958
CIE Lab	79.83, 11.59, 8.82
CIE LCh	80, 14.566, 37.252
Yxy	56.3731, 0.3493, 0.3382
Android (android.graphics.Color)	4293050038 (0xFFE2BEB6)
YUV	199.8520, -8.8010, 22.9318
Hunter-Lab	75.0820, 7.0211, 11.4405

Details

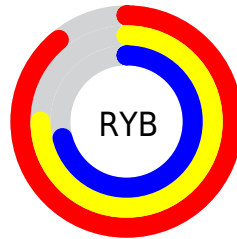
The XYZ color **58.2210, 56.3731, 52.0685** is a light color, and the websafe version is hex **FFCCCC**. A complement of this color would be **58.0898, 65.5772, 81.5479**, and the grayscale version is **54.8520, 57.7086, 62.8447**.

A 20% lighter version of the original color is **89.6284, 93.3446, 94.1823**, and **29.4857, 28.0223, 24.6237** is the 20% darker color. If you saturate the color by 10%, you get **52.3179, 48.0075, 39.4927**, and if you desaturate by 10%, it is **65.0122, 65.9106, 66.8012**.

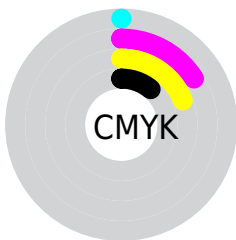
Distribution



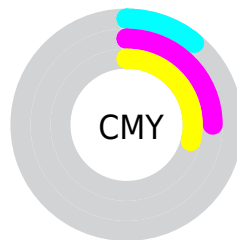
- Red (89%)
- Green (75%)
- Blue (71%)



- Red (89%)
- Yellow (75%)
- Blue (71%)



- Cyan (0%)
- Magenta (16%)
- Yellow (19%)
- Black (11%)





- Cyan (11%)
- Magenta (25%)
- Yellow (29%)

Brightness & Saturation Gradients


These gradients show how the XYZ color 58.2210, 56.3731, 52.0685 changes by changing the brightness by 10 percent. The first figure shows a shift by +10% for each color and the second figure -10%.


Similar to the brightness gradients but the following saturation gradients show a change of the XYZ color 58.2210, 56.3731, 52.0685 by changing the saturation by 10% instead.


 58.2210, 56.3731,
52.0685

 58.2210, 56.3731,
52.0685

407.9495,
411.0961, 411.6655

 42.2303, 40.5021,
36.6771


 101.3657, 99.5499,
94.6599

 29.4736, 27.9303,
24.6637


129.2505,
127.6245, 122.6969

 19.5854, 18.2731,
15.6100


161.8306,
160.5358, 155.7861

 12.2006, 11.1462,
9.0972

199.4715,
198.6681, 194.3462

 6.9536, 6.1653,
4.7070

242.5384,
242.4059, 238.7957

 3.4792, 2.9458,
2.0207

291.3969,

 1.4119, 1.1035,

292.1336, 289.5530

0.5679

346.4121,
348.2355, 347.0367

■ 0.2647, 0.0000,
0.0000

■ 0.0000, 0.0000,
0.0000

■ 58.2210, 56.3731,
52.0685

■ 58.2210, 56.3731,
52.0685

■ 52.3179, 48.0075,
39.4927

■ 65.0122, 65.9106,
66.8012

■ 47.2612, 40.7610,
28.9690

■ 72.7216, 76.6549,
83.7820

■ 43.0128, 34.5880,
20.3889

■ 81.3838, 88.6492,
103.1011

■ 39.5298, 29.4371,
13.6325

■ 85.1742, 94.9088,
108.4378

■ 36.7652, 25.2522,
8.5668

■ 34.6666, 21.9718,
5.0403

■ 33.1737, 19.5273,
2.8740

■ 32.2022, 17.8342,
1.7796

■ 32.1611, 17.7626,
1.7334

Harmonies

Analogous

The Analogous color harmony consists of three colors that are next to each other on the color wheel.



59.4034, 56.3731, 59.3540



58.2210, 56.3731, 52.0685



55.8029, 56.3731, 47.5930

Triad

The Triadic color harmony groups three colors that are evenly spaced from another and form a triangle on the color wheel.



58.2210, 56.3731, 52.0685



48.5213, 56.3731, 55.3147



54.2997, 56.3731, 78.9353

Complementary

The Complementary color scheme is a pair of colors which are on the opposite of each other on the color wheel.



58.2210, 56.3731, 52.0685



58.0898, 65.5772, 81.5479

Split Complementary

Split-complementary colors differ from the complementary color scheme. The scheme consists of three colors, the original color and two neighbors of the complement color.



51.4187, 56.3731, 77.6031



58.2210, 56.3731, 52.0685



48.1520, 56.3731, 63.4530

Square

The Square scheme is like the rectangle color scheme, but the four colors are evenly spaced on the color wheel.



58.2210, 56.3731, 52.0685



50.2222, 56.3731, 49.3437



49.1942, 56.3731, 71.7419



57.0861, 56.3731, 75.2315

Rectangle

The Rectangle color scheme consists of four colors that form a rectangle on the color wheel.



58.2210, 56.3731, 52.0685



53.8532, 56.3731, 46.5506



49.1942, 56.3731, 71.7419



53.3096, 56.3731, 79.0669

Sweetspot

The Sweet Spot groups the original color and five complimentary colors.



58.2225, 56.3757, 52.0697



88.8198, 91.3258, 95.1509



60.8349, 54.7223, 74.1446



18.8717, 19.3530, 20.0601



0.0000, 0.0000, 0.0000



20.3446, 21.4041, 23.3091

Same Dimension

The Same Dimension uses a secret algorithm to generate beautiful new colors.



58.2225, 56.3757, 52.0697



73.5612, 69.8965, 62.0480



63.1852, 66.3011, 53.7239



13.9079, 14.1018, 14.2957



18.4099, 10.2577, 1.0096



1.3359, 0.8307, 0.0899

Inverse Universe

The Inverse Universe completely reimagines the original color for something new.



58.0898, 65.5772, 81.5479



73.3563, 83.9032, 106.9364



52.9102, 55.2181, 79.8214



13.8935, 15.1260, 17.5750



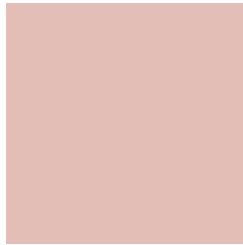
17.7960, 23.0615, 44.5617



1.2894, 1.7103, 3.1074

Previews

White Background



This preview shows how the XYZ color 58.2210, 56.3731, 52.0685 looks on a white background.

Color Contrast Check

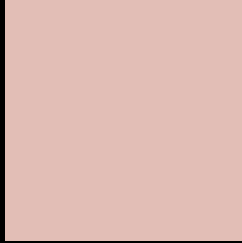
Large Text (above 18pt) WCAG AA × Fail

Any Text WCAG AA × Fail

Large Text (above 18pt) WCAG AAA × Fail

Any Text WCAG AAA × Fail

Black Background



This preview shows how the XYZ color 58.2210, 56.3731, 52.0685 looks on a black background.

Color Contrast Check

Large Text (above 18pt) WCAG AA ✓ Pass

Any Text WCAG AA ✓ Pass

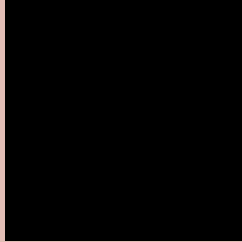
Large Text (above 18pt) WCAG AAA ✓ Pass

Any Text WCAG AAA ✓ Pass

If you want to check with other color combinations, try the [Color Contrast Checker](#).

XYZ 58.2210, 56.3731, 52.0685

Background



This preview shows how black text looks on a background with the XYZ color 58.2210, 56.3731, 52.0685.



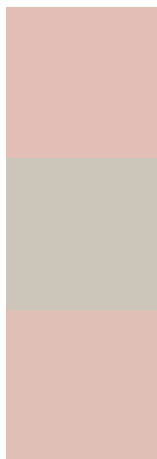
This preview shows how white text looks on a background with the XYZ color 58.2210, 56.3731,

52.0685.

Color Blindness Simulation

Color vision deficiency is a very complex topic, and I could not describe the different causes any better than Wikipedia does, so if you want to learn more, you should check out their [article about color blindness](#).

Dichromacy



Original Color

58.2210, 56.3731, 52.0685

Protanopia

53.7310, 56.3150, 54.4923

Deuteranopia

57.5057, 56.3270, 52.0973



Tritanopia

60.4259, 56.2989, 63.5591

Trichromacy



Original Color

58.2210, 56.3731, 52.0685

Protanomaly

55.2001, 56.0834, 53.8148

Deuteranomaly

57.8148, 56.4863, 52.1117

Tritanomaly

59.5121, 56.2375, 59.3480

Monochromacy



Original Color

58.2210, 56.3731, 52.0685

Achromatopsia

54.8990, 57.7580, 62.8985

Achromatomaly

55.6601, 56.8854, 58.4985

CSS Examples

Text

The CSS property to change the color of the text to XYZ 58.2210, 56.3731, 52.0685 is called "color". The color property can be set on classes, ids or directly on the HTML element.

This example shows how text in the color `rgb(226, 190, 182)` looks like.

```
.text, #text, p{  
    color:rgb(226, 190, 182)  
}
```

If you want to add a text shadow in that color use the text-shadow property, you can generate a text shadow directly with our [CSS Text Shadow Generator](#).

Here you see how black text with a 4 pixel rgb(226, 190, 182) colored shadow looks like.

```
.shadow{ text-shadow: 4px 4px 2px rgb(226, 190, 182) }
```

Border

The CSS property to change the border of an element to XYZ 58.2210, 56.3731, 52.0685 is called "border". The border property can be set on classes, ids or directly on the HTML element.

This example shows the color as border, it can be applied via the CSS property "border" or "border-color".

```
.border, #border, table{ border:4px solid rgb(226, 190, 182) }
```


If only the border color should be changed use the property `border-color`.

```
.border{ border-color:rgb(226, 190, 182) }
```

If you want to add a box shadow in that color use:

Here you see how a box with a 4 pixel `rgb(226, 190, 182)` colored shadow looks like.

```
.boxshadow{ -moz-box-shadow:4px 4px 4px  
4px rgb(226, 190, 182); -webkit-box-  
shadow:4px 4px 4px 4px rgb(226, 190, 182);  
box-shadow:4px 4px 4px 4px rgb(226, 190,  
182) }
```

Background

The CSS property to change the background color of an element to XYZ 58.2210, 56.3731, 52.0685 is called "background". The background property can be set on classes, ids or directly on the HTML element.

```
.background, #background, body{  
background: rgb(226, 190, 182) }
```

If only the background color should be changed can be used:

```
.background{ background-color: rgb(226,  
190, 182) }
```

This example shows the color as background, it is applied via the CSS property "background".

To optimize and compress your CSS code, you can use our [online CSS compressor and optimizer](#) based on csstidy. If you want to create a linear or radial gradient as background or border, check our [CSS Gradient Generator](#).

Hey! You found this booklet interesting? Support Converting Colors with the new Membership Option!

The pro membership hides all ads, plus gives you double the colors in the color bucket, and more awesome pro features!

[Learn more, Memberships starting at \\$2.50/m!](#)

**Follow me
on Twitter!**

@ConvertingColor