

Converting Colors

XYZ(58.2058, 55.5038, 54.4121)

Have a look what the booklet for
XYZ(58.2058, 55.5038, 54.4121)
contains.

XYZ(58.1040, 55.2973, 54.6247)	3
<i>Conversions</i>	4
<i>Details</i>	6
<i>Harmonies</i>	12
<i>Previews</i>	24
<i>Color Blindness Simulation</i>	28
<i>CSS Examples</i>	31

Color

**XYZ(58.1040, 55.2973,
54.6247)**

Conversions

Conversions Part 1

Format	Color
Hex	E2BBBB
RGB	226, 187, 187
RGB Percent	89%, 73%, 73%
CMY	0.1137, 0.2666, 0.2667
CMYK	0.00, 0.17, 0.17, 0.11
HSL	0°, 40%, 81%
HSV	0°, 17%, 89%
XYZ	58.1040, 55.2973, 54.6247
YIQ	198.6610, 23.2440, 8.2680

Conversions

Conversions Part 2

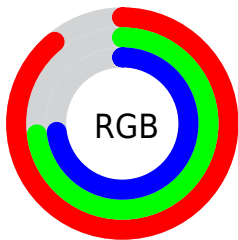
Format	Color
R _Y B	226, 187, 187
Decimal	14859195
CIE Lab	79.21, 13.95, 5.24
CIE LCh	79, 14.906, 20.586
Yxy	55.2973, 0.3458, 0.3291
Android (android.graphics.Color)	4293049275 (0xFFE2BBBB)
YUV	198.6610, -5.7489, 23.9763
Hunter-Lab	74.3622, 9.3399, 8.5005

Details

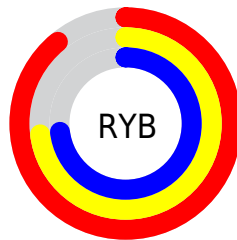
The XYZ color **58.1040, 55.2973, 54.6247** is a light color, and the websafe version is hex **FFCCCC**. A complement of this color would be **61.4167, 70.4467, 82.3125**, and the grayscale version is **54.1043, 56.9220, 61.9880**.

A 20% lighter version of the original color is **89.4683, 91.8322, 97.8039**, and **29.4057, 27.3175, 26.2772** is the 20% darker color. If you saturate the color by 10%, you get **51.4500, 45.5609, 41.3947**, and if you desaturate by 10%, it is **65.8962, 66.6996, 70.1139**.

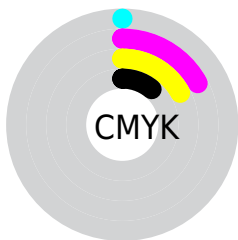
Distribution



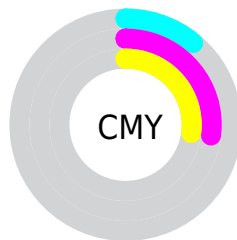
- Red (89%)
- Green (73%)
- Blue (73%)



- Red (89%)
- Yellow (73%)
- Blue (73%)



- Cyan (0%)
- Magenta (17%)
- Yellow (17%)
- Black (11%)



- Cyan (11%)
- Magenta (27%)
- Yellow (27%)

Brightness & Saturation Gradients

These gradients show how the XYZ color 58.1040, 55.2973, 54.6247 changes by changing the brightness by 10 percent. The first figure shows a shift by +10% for each color and the second figure -10%.

Similar to the brightness gradients but the following saturation gradients show a change of the XYZ color 58.1040, 55.2973, 54.6247 by changing the saturation by 10% instead.

■ 58.1040, 55.2973,
54.6247

■ 58.1040, 55.2973,
54.6247

407.5210,
407.0379, 421.7295

■ 42.1358, 39.6398,
38.7048

■ 101.1964, 97.9764,
98.4565

■ 29.3993, 27.2578,
26.2241

129.0513,
125.7668, 127.2054

■ 19.5289, 17.7669,
16.7641

161.5993,
158.3703, 161.0678

■ 12.1593, 10.7828,
9.9062

199.2055,
196.1713, 200.4621

■ 6.9252, 5.9210,
5.2320

242.2355,
239.5541, 245.8068

■ 3.4613, 2.7971,
2.3229

291.0544,

■ 1.4021, 1.0267,

288.9033, 297.5206

0.7440

346.0278,
344.6030, 356.0220

■ 0.2578, 0.0000,
0.0000

■ 0.0000, 0.0000,
0.0000

■ 58.1040, 55.2973,
54.6247

■ 58.1040, 55.2973,
54.6247

■ 51.4500, 45.5609,
41.3947

■ 65.8962, 66.6996,
70.1139

■ 45.8766, 37.4055,
30.3150

■ 74.8715, 79.8328,
87.9571

■ 41.3283, 30.7500,
21.2732

■ 85.0779, 94.7674,
108.2481

■ 37.7426, 25.5030,
14.1453

■ 85.1742, 94.9089,
108.4378

■ 35.0503, 21.5632,
8.7935

■ 33.1729, 18.8160,
5.0619

■ 32.0186, 17.1267,
2.7677

■ 31.4658, 16.3176,
1.6692

■ 31.3645, 16.1694,
1.4679

Harmonies

Analogous

The Analogous color harmony consists of three colors that are next to each other on the color wheel.



58.4130, 55.2973, 62.9323



58.1040, 55.2973, 54.6247



56.2791, 55.2973, 48.4062

Triad

The Triadic color harmony groups three colors that are evenly spaced from another and form a triangle on the color wheel.



58.1040, 55.2973, 54.6247



48.2570, 55.2973, 50.3845



51.6272, 55.2973, 77.8825

Complementary

The Complementary color scheme is a pair of colors which are on the opposite of each other on the color wheel.



58.1040, 55.2973, 54.6247



61.4167, 70.4467, 82.3125

Split Complementary

Split-complementary colors differ from the complementary color scheme. The scheme consists of three colors, the original color and two neighbors of the complement color.



49.0055, 55.2973, 73.7903



58.1040, 55.2973, 54.6247



47.1087, 55.2973, 57.5662

Square

The Square scheme is like the rectangle color scheme, but the four colors are evenly spaced on the color wheel.



58.1040, 55.2973, 54.6247



50.5704, 55.2973, 46.1234



47.3774, 55.2973, 66.1622



54.5979, 55.2973, 76.9056

Rectangle

The Rectangle color scheme consists of four colors that form a rectangle on the color wheel.



58.1040, 55.2973, 54.6247



54.4851, 55.2973, 46.0275



47.3774, 55.2973, 66.1622



50.6777, 55.2973, 77.0407

Sweetspot

The Sweet Spot groups the original color and five complimentary colors.



58.1055, 55.2998, 54.6259



89.1316, 91.3399, 97.1340



62.8624, 57.2011, 79.6797



18.9067, 19.3000, 20.4504



0.0000, 0.0000, 0.0000



20.3446, 21.4041, 23.3091

Same Dimension

The Same Dimension uses a secret algorithm to generate beautiful new colors.



58.1055, 55.2998, 54.6259



72.8287, 67.4845, 64.7236



62.5261, 64.1410, 56.0994



13.7074, 13.7008, 14.2288



17.8934, 9.2247, 0.8375



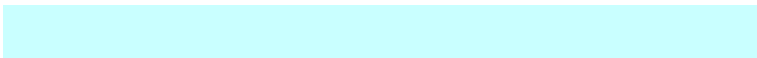
1.2403, 0.6395, 0.0581

Inverse Universe

The Inverse Universe completely reimagines the original color for something new.



61.4167, 70.4467, 82.3125



78.0166, 91.2162, 108.1023



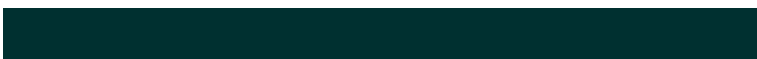
56.4135, 60.4402, 80.6448



14.1165, 15.5721, 17.6494



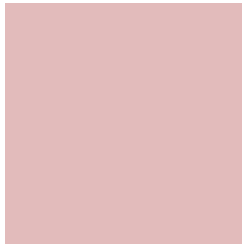
23.3432, 34.1560, 46.4108



1.6181, 2.3676, 3.2170

Previews

White Background



This preview shows how the XYZ color 58.1040, 55.2973, 54.6247 looks on a white background.

Color Contrast Check

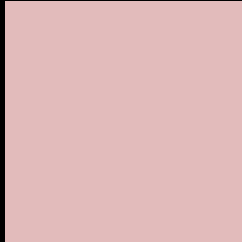
Large Text (above 18pt) WCAG AA × Fail

Any Text WCAG AA × Fail

Large Text (above 18pt) WCAG AAA × Fail

Any Text WCAG AAA × Fail

Black Background



This preview shows how the XYZ color 58.1040, 55.2973, 54.6247 looks on a black background.

Color Contrast Check

Large Text (above 18pt) WCAG AA ✓ Pass

Any Text WCAG AA ✓ Pass

Large Text (above 18pt) WCAG AAA ✓ Pass

Any Text WCAG AAA ✓ Pass

If you want to check with other color combinations, try the [Color Contrast Checker](#).

XYZ 58.1040, 55.2973, 54.6247

Background



This preview shows how black text looks on a background with the XYZ color 58.1040, 55.2973, 54.6247.



This preview shows how white text looks on a background with the XYZ color 58.1040, 55.2973,

Color Blindness Simulation

Color vision deficiency is a very complex topic, and I could not describe the different causes any better than Wikipedia does, so if you want to learn more, you should check out their [article about color blindness](#).

Dichromacy



Original Color

58.1040, 55.2973, 54.6247

Protanopia

53.3417, 55.7031, 57.8095

Deuteranopia

56.4898, 55.4322, 54.1765



Tritanopia

59.6527, 55.3154, 61.5657

Trichromacy



Original Color

58.1040, 55.2973, 54.6247

Protanomaly

54.9426, 55.5593, 56.5434

Deuteranomaly

57.1847, 55.4700, 54.1472

Tritanomaly

59.0878, 55.3888, 59.2066

Monochromacy



Original Color

58.1040, 55.2973, 54.6247

Achromatopsia

54.2854, 57.1125, 62.1955

Achromatomaly

55.6599, 56.5257, 59.6067

CSS Examples

Text

The CSS property to change the color of the text to XYZ 58.1040, 55.2973, 54.6247 is called "color". The color property can be set on classes, ids or directly on the HTML element.

This example shows how text in the color `rgb(226, 187, 187)` looks like.

```
.text, #text, p{  
    color:rgb(226, 187, 187)  
}
```

If you want to add a text shadow in that color use the text-shadow property, you can generate a text shadow directly with our [CSS Text Shadow Generator](#).

Here you see how black text with a 4 pixel rgb(226, 187, 187) colored shadow looks like.

```
.shadow{ text-shadow: 4px 4px 2px rgb(226, 187, 187) }
```

Border

The CSS property to change the border of an element to XYZ 58.1040, 55.2973, 54.6247 is called "border". The border property can be set on classes, ids or directly on the HTML element.

This example shows the color as border, it can be applied via the CSS property "border" or "border-color".

```
.border, #border, table{ border:4px solid rgb(226, 187, 187) }
```


If only the border color should be changed use the property `border-color`.

```
.border{ border-color:rgb(226, 187, 187) }
```

If you want to add a box shadow in that color use:

Here you see how a box with a 4 pixel `rgb(226, 187, 187)` colored shadow looks like.

```
.boxshadow{ -moz-box-shadow:4px 4px 4px  
4px rgb(226, 187, 187); -webkit-box-  
shadow:4px 4px 4px 4px rgb(226, 187, 187);  
box-shadow:4px 4px 4px 4px rgb(226, 187,  
187) }
```

Background

The CSS property to change the background color of an element to XYZ 58.1040, 55.2973, 54.6247 is called "background". The background property can be set on classes, ids or directly on the HTML element.

```
.background, #background, body{  
background: rgb(226, 187, 187) }
```

If only the background color should be changed can be used:

```
.background{ background-color: rgb(226,  
187, 187) }
```

This example shows the color as background, it is applied via the CSS property "background".

To optimize and compress your CSS code, you can use our [online CSS compressor and optimizer](#) based on csstidy. If you want to create a linear or radial gradient as background or border, check our [CSS Gradient Generator](#).

Hey! You found this booklet interesting? Support Converting Colors with the new Membership Option!

The pro membership hides all ads, plus gives you double the colors in the color bucket, and more awesome pro features!

[Learn more, Memberships starting at \\$2.50/m!](#)

**Follow me
on Twitter!**

@ConvertingColor