

Converting Colors

XYZ(58.2206, 55.8760, 60.7065)

Have a look what the booklet for
XYZ(58.2206, 55.8760, 60.7065)
contains.

XYZ(58.0944, 55.7986, 60.5316)	3
<i>Conversions</i>	4
<i>Details</i>	6
<i>Harmonies</i>	12
<i>Previews</i>	24
<i>Color Blindness Simulation</i>	28
<i>CSS Examples</i>	31

Color

**XYZ(58.0944, 55.7986,
60.5316)**

Conversions

Conversions Part 1

Format	Color
Hex	DDBDC5
RGB	221, 189, 197
RGB Percent	87%, 74%, 77%
CMY	0.1333, 0.2588, 0.2274
CMYK	0.00, 0.14, 0.11, 0.13
HSL	345°, 32%, 80%
HSV	345°, 14%, 87%
XYZ	58.0944, 55.7986, 60.5316
YIQ	199.4800, 16.5040, 9.2720

Conversions

Conversions Part 2

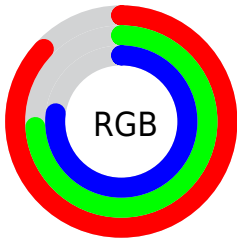
Format	Color
R _Y B	221, 189, 197
Decimal	14532037
CIE Lab	79.50, 12.69, 0.20
CIE LCh	79, 12.696, 0.913
Yxy	55.7986, 0.3331, 0.3199
Android (android.graphics.Color)	4292722117 (0xFFDDBDC5)
YUV	199.4800, -1.2226, 18.8730
Hunter-Lab	74.6985, 8.1005, 4.2435

Details

The XYZ color **58.0944, 55.7986, 60.5316** is a light color, and the websafe version is hex **FFCCCC**. A complement of this color would be **58.8551, 67.3371, 72.8494**, and the grayscale version is **54.5816, 57.4241, 62.5349**.

A 20% lighter version of the original color is **91.7818, 93.7206, 107.0184**, and **29.4880, 27.6985, 29.7788** is the 20% darker color. If you saturate the color by 10%, you get **51.9019, 46.2876, 49.6058**, and if you desaturate by 10%, it is **65.2233, 66.8468, 72.8015**.

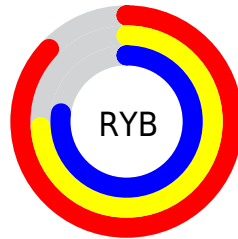
Distribution



Red (87%)

Green (74%)

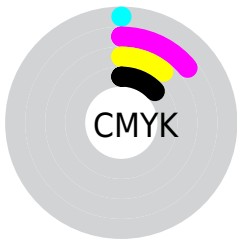
Blue (77%)



Red (87%)

Yellow (74%)

Blue (77%)

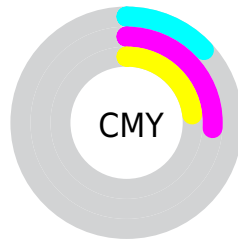


Cyan (0%)

Magenta (14%)

Yellow (11%)

Black (13%)



Cyan (13%)


Magenta (26%)


Yellow (23%)

Brightness & Saturation Gradients


These gradients show how the XYZ color 58.0944, 55.7986, 60.5316 changes by changing the brightness by 10 percent. The first figure shows a shift by +10% for each color and the second figure -10%.


Similar to the brightness gradients but the following saturation gradients show a change of the XYZ color 58.0944, 55.7986, 60.5316 by changing the saturation by 10% instead.


 58.0944, 55.7986,
60.5316

 58.0944, 55.7986,
60.5316


407.4858,
408.9321, 444.4134

 42.1281, 40.0415,
43.4192


 101.1825, 98.7100,
107.1513

 29.3932, 27.5709,
29.8803


129.0350,
126.6332, 137.4957

 19.5242, 18.0024,
19.4965


161.5803,
159.3804, 173.0879

 12.1559, 10.9517,
11.8491

199.1837,
197.3361, 214.3463

 6.9229, 6.0344,
6.5197

242.2106,
240.8848, 261.6895

 3.4598, 2.8660,
3.0898

291.0263,

 1.4013, 1.0622,

290.4107, 315.5360

1.1406

345.9963,
346.2983, 376.3045

■ 0.2572, 0.0000,
0.0000

■ 0.0000, 0.0000,
0.0000

■ 58.0944, 55.7986,
60.5316

■ 58.0944, 55.7986,
60.5316

■ 51.9019, 46.2876,
49.6058

■ 65.2233, 66.8468,
72.8015

■ 46.6017, 38.2384,
39.9741

■ 73.3210, 79.4885,
86.4559

■ 42.1531, 31.5802,
31.5888

■ 82.3263, 93.5912,
101.5054

■ 38.5104, 26.2335,
24.3976

■ 83.6290, 94.1123,
108.3655

■ 35.6233, 22.1106,
18.3443

■ 33.4358, 19.1132,
13.3683

■ 31.8836, 17.1273,
9.4024

■ 30.8894, 16.0148,
6.3711

■ 30.5141, 15.6503,
5.0559

Harmonies

Analogous

The Analogous color harmony consists of three colors that are next to each other on the color wheel.



57.4399, 55.7986, 67.8467



58.0944, 55.7986, 60.5316



57.3575, 55.7986, 53.8174

Triad

The Triadic color harmony groups three colors that are evenly spaced from another and form a triangle on the color wheel.



58.0944, 55.7986, 60.5316



50.5536, 55.7986, 49.4776



50.6849, 55.7986, 73.8829

Complementary

The Complementary color scheme is a pair of colors which are on the opposite of each other on the color wheel.



58.0944, 55.7986, 60.5316



58.8551, 67.3371, 72.8494

Split Complementary

Split-complementary colors differ from the complementary color scheme. The scheme consists of three colors, the original color and two neighbors of the complement color.



48.9351, 55.7986, 68.2650



58.0944, 55.7986, 60.5316



48.8611, 55.7986, 54.1759

Square

The Square scheme is like the rectangle color scheme, but the four colors are evenly spaced on the color wheel.



58.0944, 55.7986, 60.5316



52.9568, 55.7986, 47.7585



48.2780, 55.7986, 60.9793



53.1131, 55.7986, 75.9187

Rectangle

The Rectangle color scheme consists of four colors that form a rectangle on the color wheel.



58.0944, 55.7986, 60.5316



56.1895, 55.7986, 50.4865



48.2780, 55.7986, 60.9793



50.0006, 55.7986, 72.3296

Sweetspot

The Sweet Spot groups the original color and five complimentary colors.



58.0960, 55.8011, 60.5328



90.6744, 93.1808, 101.4850



58.6911, 55.7645, 76.0774



19.2372, 19.6787, 21.4310



0.0000, 0.0000, 0.0000



20.3446, 21.4041, 23.3091

Same Dimension

The Same Dimension uses a secret algorithm to generate beautiful new colors.



58.0960, 55.8011, 60.5328



77.9458, 73.4721, 79.5208



58.9721, 58.9811, 56.4235



13.1889, 13.1046, 14.2558



17.7644, 9.1068, 3.1392



1.1854, 0.6038, 0.3852

Inverse Universe

The Inverse Universe completely reimagines the original color for something new.



58.0960, 55.8011, 60.5328



77.9458, 73.4721, 79.5208



57.8336, 63.6295, 77.6407



13.1889, 13.1046, 14.2558



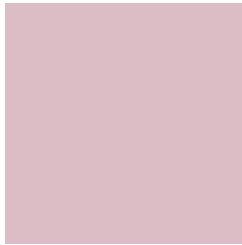
17.7644, 9.1068, 3.1392



1.1854, 0.6038, 0.3852

Previews

White Background



This preview shows how the XYZ color 58.0944, 55.7986, 60.5316 looks on a white background.

Color Contrast Check

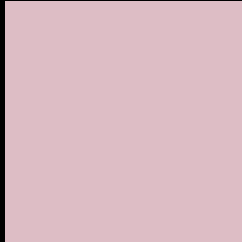
Large Text (above 18pt) WCAG AA × Fail

Any Text WCAG AA × Fail

Large Text (above 18pt) WCAG AAA × Fail

Any Text WCAG AAA × Fail

Black Background



This preview shows how the XYZ color 58.0944, 55.7986, 60.5316 looks on a black background.

Color Contrast Check

Large Text (above 18pt) WCAG AA ✓ Pass

Any Text WCAG AA ✓ Pass

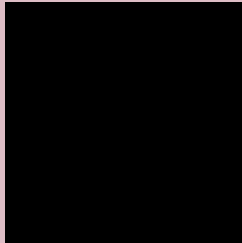
Large Text (above 18pt) WCAG AAA ✓ Pass

Any Text WCAG AAA ✓ Pass

If you want to check with other color combinations, try the [Color Contrast Checker](#).

XYZ 58.0944, 55.7986, 60.5316

Background



This preview shows how black text looks on a background with the XYZ color 58.0944, 55.7986, 60.5316.



This preview shows how white text looks on a background with the XYZ color 58.0944, 55.7986,

Color Blindness Simulation

Color vision deficiency is a very complex topic, and I could not describe the different causes any better than Wikipedia does, so if you want to learn more, you should check out their [article about color blindness](#).

Dichromacy



Original Color

58.0944, 55.7986, 60.5316

Protanopia

53.8357, 55.8390, 63.1989

Deuteranopia

57.0277, 55.8918, 60.6058



Tritanopia

58.8869, 55.8078, 64.1682

Trichromacy



Original Color

58.0944, 55.7986, 60.5316

Protanomaly

55.2274, 55.5755, 62.4599

Deuteranomaly

57.4049, 55.7636, 60.5612

Tritanomaly

58.6500, 55.7131, 62.9208

Monochromacy



Original Color

58.0944, 55.7986, 60.5316

Achromatopsia

54.2854, 57.1125, 62.1955

Achromatomaly

55.4403, 56.3728, 61.3851

CSS Examples

Text

The CSS property to change the color of the text to XYZ 58.0944, 55.7986, 60.5316 is called "color". The color property can be set on classes, ids or directly on the HTML element.

This example shows how text in the color `rgb(221, 189, 197)` looks like.

```
.text, #text, p{  
    color:rgb(221, 189, 197)  
}
```

If you want to add a text shadow in that color use the text-shadow property, you can generate a text shadow directly with our [CSS Text Shadow Generator](#).

Here you see how black text with a 4 pixel rgb(221, 189, 197) colored shadow looks like.

```
.shadow{ text-shadow: 4px 4px 2px rgb(221, 189, 197) }
```

Border

The CSS property to change the border of an element to XYZ 58.0944, 55.7986, 60.5316 is called "border". The border property can be set on classes, ids or directly on the HTML element.

This example shows the color as border, it can be applied via the CSS property "border" or "border-color".

```
.border, #border, table{ border:4px solid rgb(221, 189, 197) }
```


If only the border color should be changed use the property border-color.

```
.border{ border-color:rgb(221, 189, 197) }
```

If you want to add a box shadow in that color use:

Here you see how a box with a 4 pixel rgb(221, 189, 197) colored shadow looks like.

```
.boxshadow{ -moz-box-shadow:4px 4px 4px  
4px rgb(221, 189, 197); -webkit-box-  
shadow:4px 4px 4px 4px rgb(221, 189, 197);  
box-shadow:4px 4px 4px 4px rgb(221, 189,  
197) }
```

Background

The CSS property to change the background color of an element to XYZ 58.0944, 55.7986, 60.5316 is called "background". The background property can be set on classes, ids or directly on the HTML element.

```
.background, #background, body{  
background: rgb(221, 189, 197) }
```

If only the background color should be changed can be used:

```
.background{ background-color: rgb(221,  
189, 197) }
```

This example shows the color as background, it is applied via the CSS property "background".

To optimize and compress your CSS code, you can use our [online CSS compressor and optimizer](#) based on csstidy. If you want to create a linear or radial gradient as background or border, check our [CSS Gradient Generator](#).

Hey! You found this booklet interesting? Support Converting Colors with the new Membership Option!

The pro membership hides all ads, plus gives you double the colors in the color bucket, and more awesome pro features!

[Learn more, Memberships starting at \\$2.50/m!](#)

**Follow me
on Twitter!**

@ConvertingColor