

Converting Colors

XYZ(58.3101, 55.8149, 64.8268)

Have a look what the booklet for
XYZ(58.3101, 55.8149, 64.8268)
contains.

XYZ(58.3101, 55.8149, 64.8268)	3
<i>Conversions</i>	4
<i>Details</i>	6
<i>Harmonies</i>	12
<i>Previews</i>	24
<i>Color Blindness Simulation</i>	28
<i>CSS Examples</i>	31

Color

**XYZ(58.3101, 55.8149,
64.8268)**

Conversions

Conversions Part 1

Format	Color
Hex	DBBDCC
RGB	219, 189, 204
RGB Percent	86%, 74%, 80%
CMY	0.1412, 0.2588, 0.2000
CMYK	0.00, 0.14, 0.07, 0.14
HSL	330°, 29%, 80%
HSV	330°, 14%, 86%
XYZ	58.3101, 55.8149, 64.8268
YIQ	199.6800, 13.0650, 11.0250

Conversions

Conversions Part 2

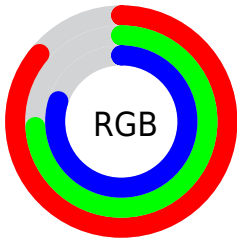
Format	Color
R _{YB}	219, 189, 204
Decimal	14400972
CIE Lab	79.51, 13.18, -3.58
CIE LCh	80, 13.657, 344.791
Yxy	55.8149, 0.3258, 0.3119
Android (android.graphics.Color)	4292591052 (0xFFDBBDCC)
YUV	199.6800, 2.1298, 16.9436
Hunter-Lab	74.7094, 8.5765, 0.8495

Details

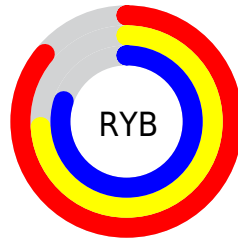
The XYZ color **58.3101, 55.8149, 64.8268** is a light color, and the websafe version is hex **FFCCCC**. A complement of this color would be **57.2191, 65.8430, 66.8231**, and the grayscale version is **54.6860, 57.5339, 62.6544**.

A 20% lighter version of the original color is **91.9424, 93.7848, 107.8641**, and **29.6190, 27.7028, 32.6403** is the 20% darker color. If you saturate the color by 10%, you get **52.6829, 46.5887, 56.6970**, and if you desaturate by 10%, it is **64.7442, 66.5056, 73.6826**.

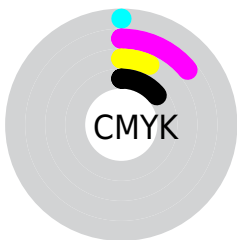
Distribution



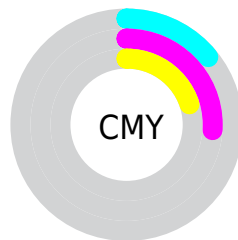
- Red (86%)
- Green (74%)
- Blue (80%)



- Red (86%)
- Yellow (74%)
- Blue (80%)



- Cyan (0%)
- Magenta (14%)
- Yellow (7%)
- Black (14%)



- Cyan (14%)
- Magenta (26%)
- Yellow (20%)

Brightness & Saturation Gradients

These gradients show how the XYZ color 58.3101, 55.8149, 64.8268 changes by changing the brightness by 10 percent. The first figure shows a shift by +10% for each color and the second figure -10%.

Similar to the brightness gradients but the following saturation gradients show a change of the XYZ color 58.3101, 55.8149, 64.8268 by changing the saturation by 10% instead.

■ 58.3101, 55.8149,
64.8268

■ 58.3101, 55.8149,
64.8268

408.2757,
408.9936, 460.4585

■ 42.3022, 40.0545,
46.8702

■ 101.4947, 98.7339,
113.4117

■ 29.5302, 27.5811,
32.5794

129.4021,
126.6613, 144.8771

■ 19.6285, 18.0101,
21.5360

162.0067,
159.4132, 181.6825

■ 12.2320, 10.9572,
13.3213

199.6739,
197.3740, 224.2464

■ 6.9752, 6.0381,
7.5168

242.7691,
240.9280, 272.9874

■ 3.4928, 2.8683,
3.7041

291.6575,

■ 1.4194, 1.0633,

290.4597, 328.3241

1.4644

346.7046,
346.3534, 390.6749

■ 0.2700, 0.0000,
0.1912

■ 0.0000, 0.0000,
0.0000

■ 58.3101, 55.8149,
64.8268

■ 58.3101, 55.8149,
64.8268

■ 52.6829, 46.5887,
56.6970

■ 64.7442, 66.5056,
73.6826

■ 47.8242, 38.7552,
49.2692

■ 72.0119, 78.7137,
83.2804

■ 43.6993, 32.2478,
42.5228

■ 80.1448, 92.4985,
93.6401

■ 40.2691, 26.9913,
36.4348

■ 81.8871, 93.3456,
102.3517

■ 37.4906, 22.9030,
30.9808

■ 83.0238, 93.8002,
108.3372

■ 35.3156, 19.8901,
26.1338

■ 33.6888, 17.8454,
21.8643

■ 32.5433, 16.6391,
18.1385

■ 32.0004, 16.1749,
16.0412

Harmonies

Analogous

The Analogous color harmony consists of three colors that are next to each other on the color wheel.



56.8577, 55.8149, 72.1481



58.3101, 55.8149, 64.8268



58.3207, 55.8149, 56.9939

Triad

The Triadic color harmony groups three colors that are evenly spaced from another and form a triangle on the color wheel.



58.3101, 55.8149, 64.8268



51.7139, 55.8149, 47.2940



49.3909, 55.8149, 72.0605

Complementary

The Complementary color scheme is a pair of colors which are on the opposite of each other on the color wheel.



58.3101, 55.8149, 64.8268



57.2191, 65.8430, 66.8231

Split Complementary

Split-complementary colors differ from the complementary color scheme. The scheme consists of three colors, the original color and two neighbors of the complement color.



48.1075, 55.8149, 64.7155



58.3101, 55.8149, 64.8268



49.4169, 55.8149, 50.6610

Square

The Square scheme is like the rectangle color scheme, but the four colors are evenly spaced on the color wheel.



58.3101, 55.8149, 64.8268



54.4476, 55.8149, 47.3182



48.1169, 55.8149, 56.8917



51.6773, 55.8149, 76.5632

Rectangle

The Rectangle color scheme consists of four colors that form a rectangle on the color wheel.



58.3101, 55.8149, 64.8268



57.5056, 55.8149, 52.5471



48.1169, 55.8149, 56.8917



48.8315, 55.8149, 69.8154

Sweetspot

The Sweet Spot groups the original color and five complimentary colors.



58.3117, 55.8174, 64.8280



91.0715, 93.3397, 103.5761



55.8877, 54.3498, 74.5636



19.3375, 19.7188, 21.9593



0.0000, 0.0000, 0.0000



20.3446, 21.4041, 23.3091

Same Dimension

The Same Dimension uses a secret algorithm to generate beautiful new colors.



58.3117, 55.8174, 64.8280



80.2745, 75.4293, 88.6210



56.5983, 55.1320, 55.8055



13.3262, 13.1596, 14.9789



19.0298, 9.6130, 9.8028



1.2763, 0.6402, 0.8641

Inverse Universe

The Inverse Universe completely reimagines the original color for something new.



58.3117, 55.8174, 64.8280



80.2745, 75.4293, 88.6210



59.1057, 66.5976, 76.7580



13.3262, 13.1596, 14.9789



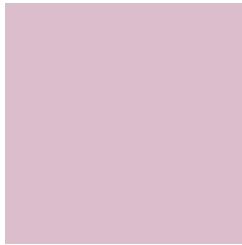
19.0298, 9.6130, 9.8028



1.2763, 0.6402, 0.8641

Previews

White Background



This preview shows how the XYZ color 58.3101, 55.8149, 64.8268 looks on a white background.

Color Contrast Check

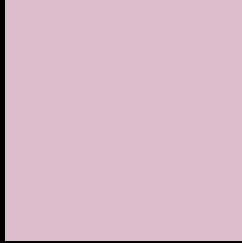
Large Text (above 18pt) WCAG AA × Fail

Any Text WCAG AA × Fail

Large Text (above 18pt) WCAG AAA × Fail

Any Text WCAG AAA × Fail

Black Background



This preview shows how the XYZ color 58.3101, 55.8149, 64.8268 looks on a black background.

Color Contrast Check

Large Text (above 18pt) WCAG AA ✓ Pass

Any Text WCAG AA ✓ Pass

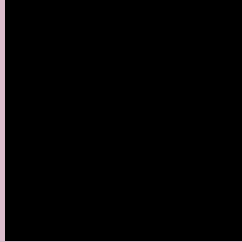
Large Text (above 18pt) WCAG AAA ✓ Pass

Any Text WCAG AAA ✓ Pass

If you want to check with other color combinations, try the [Color Contrast Checker](#).

XYZ 58.3101, 55.8149, 64.8268

Background



This preview shows how black text looks on a background with the XYZ color 58.3101, 55.8149, 64.8268.



This preview shows how white text looks on a background with the XYZ color 58.3101, 55.8149,

Color Blindness Simulation

Color vision deficiency is a very complex topic, and I could not describe the different causes any better than Wikipedia does, so if you want to learn more, you should check out their [article about color blindness](#).

Dichromacy



Original Color

58.3101, 55.8149, 64.8268

Protanopia

54.1511, 55.9042, 67.6110

Deuteranopia

56.9705, 55.7674, 64.8883



Tritanopia

58.3101, 55.8149, 64.8268

Trichromacy



Original Color

58.3101, 55.8149, 64.8268

Protanomaly

55.5093, 55.6241, 66.8423

Deuteranomaly

57.3369, 55.6336, 64.8431

Tritanomaly

58.3101, 55.8149, 64.8268

Monochromacy



Original Color

58.3101, 55.8149, 64.8268

Achromatopsia

54.8990, 57.7580, 62.8985

Achromatomaly

56.0147, 56.9623, 63.3009

CSS Examples

Text

The CSS property to change the color of the text to XYZ 58.3101, 55.8149, 64.8268 is called "color". The color property can be set on classes, ids or directly on the HTML element.

This example shows how text in the color `rgb(219, 189, 204)` looks like.

```
.text, #text, p{  
    color:rgb(219, 189, 204)  
}
```

If you want to add a text shadow in that color use the text-shadow property, you can generate a text shadow directly with our [CSS Text Shadow Generator](#).

Here you see how black text with a 4 pixel rgb(219, 189, 204) colored shadow looks like.

```
.shadow{ text-shadow: 4px 4px 2px rgb(219, 189, 204) }
```

Border

The CSS property to change the border of an element to XYZ 58.3101, 55.8149, 64.8268 is called "border". The border property can be set on classes, ids or directly on the HTML element.

This example shows the color as border, it can be applied via the CSS property "border" or "border-color".

```
.border, #border, table{ border:4px solid rgb(219, 189, 204) }
```


If only the border color should be changed use the property `border-color`.

```
.border{ border-color:rgb(219, 189, 204) }
```

If you want to add a box shadow in that color use:

Here you see how a box with a 4 pixel `rgb(219, 189, 204)` colored shadow looks like.

```
.boxshadow{ -moz-box-shadow:4px 4px 4px  
4px rgb(219, 189, 204); -webkit-box-  
shadow:4px 4px 4px 4px rgb(219, 189, 204);  
box-shadow:4px 4px 4px 4px rgb(219, 189,  
204) }
```

Background

The CSS property to change the background color of an element to XYZ 58.3101, 55.8149, 64.8268 is called "background". The background property can be set on classes, ids or directly on the HTML element.

```
.background, #background, body{  
background: rgb(219, 189, 204) }
```

If only the background color should be changed can be used:

```
.background{ background-color: rgb(219,  
189, 204) }
```

This example shows the color as background, it is applied via the CSS property "background".

To optimize and compress your CSS code, you can use our [online CSS compressor and optimizer](#) based on csstidy. If you want to create a linear or radial gradient as background or border, check our [CSS Gradient Generator](#).

Hey! You found this booklet interesting? Support Converting Colors with the new Membership Option!

The pro membership hides all ads, plus gives you double the colors in the color bucket, and more awesome pro features!

[Learn more, Memberships starting at \\$2.50/m!](#)

**Follow me
on Twitter!**

@ConvertingColor