

# Converting Colors

XYZ(58.3118, 59.2119, 51.2772)

Have a look what the booklet for  
XYZ(58.3118, 59.2119, 51.2772)  
contains.

<b>XYZ(58.2511, 59.0556, 51.5087)</b> .....	3
<b><i>Conversions</i></b> .....	4
<b><i>Details</i></b> .....	6
<b><i>Harmonies</i></b> .....	12
<b><i>Previews</i></b> .....	24
<b><i>Color Blindness Simulation</i></b> .....	28
<b><i>CSS Examples</i></b> .....	31

# Color

**XYZ(58.2511, 59.0556,  
51.5087)**

# Conversions

## Conversions Part 1

<b>Format</b>	<b>Color</b>
Hex	DDC6B4
RGB	221, 198, 180
RGB Percent	87%, 78%, 71%
CMY	0.1333, 0.2235, 0.2941
CMYK	0.00, 0.10, 0.19, 0.13
HSL	26°, 38%, 79%
HSV	26°, 19%, 87%
XYZ	58.2511, 59.0556, 51.5087
YIQ	202.8250, 19.4860, -0.7220

# Conversions

## Conversions Part 2

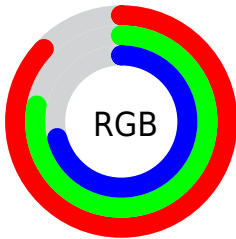
Format	Color
R <sub>Y</sub> B	221, 212, 180
Decimal	14534324
CIE Lab	81.32, 5.22, 11.96
CIE LCh	81, 13.048, 66.431
Yxy	59.0556, 0.3451, 0.3498
Android (android.graphics.Color)	4292724404 (0xFFDDC6B4)
YUV	202.8250, -11.2527, 15.9395
Hunter-Lab	76.8476, 0.8210, 14.0530

# Details

The XYZ color **58.2511, 59.0556, 51.5087** is a light color, and the websafe version is hex **CCCCCC**. A complement of this color would be **53.2291, 57.6343, 76.7261**, and the grayscale version is **56.7161, 59.6697, 64.9803**.

A 20% lighter version of the original color is **92.1403, 98.8361, 93.5778**, and **29.5299, 29.5858, 24.2329** is the 20% darker color. If you saturate the color by 10%, you get **53.4589, 52.7912, 39.6754**, and if you desaturate by 10%, it is **63.6374, 65.9326, 65.3124**.

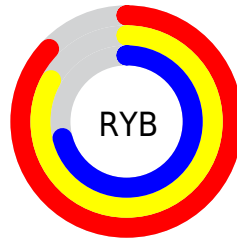
# Distribution



Red (87%)

Green (78%)

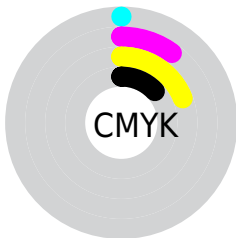
Blue (71%)



Red (87%)

Yellow (83%)

Blue (71%)

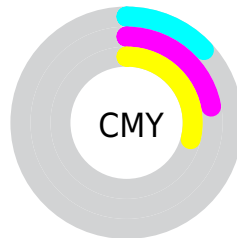


Cyan (0%)

Magenta (10%)

Yellow (19%)

Black (13%)



Cyan (13%)

Magenta (22%)


Yellow (29%)


# Brightness & Saturation Gradients

These gradients show how the XYZ color 58.2511, 59.0556, 51.5087 changes by changing the brightness by 10 percent. The first figure shows a shift by +10% for each color and the second figure -10%.


Similar to the brightness gradients but the following saturation gradients show a change of the XYZ color 58.2511, 59.0556, 51.5087 by changing the saturation by 10% instead.





 58.2511, 59.0556,  
51.5087

 58.2511, 59.0556,  
51.5087


408.0597,  
421.1079, 409.4398

 42.2546, 42.6579,  
36.2341


 101.4093,  
103.4585, 93.8255

 29.4927, 29.6168,  
24.3239


129.3017,  
132.2324, 121.7047

 19.6000, 19.5479,  
15.3597


161.8901,  
165.9005, 154.6225

 12.2112, 12.0668,  
8.9228

199.5399,  
204.8473, 192.9975

 6.9609, 6.7892,  
4.5947

242.6164,  
249.4570, 237.2482

 3.4838, 3.3306,  
1.9570

291.4849,

 1.4145, 1.3067,

300.1140, 287.7931

0.5286

346.5109,  
357.2029, 345.0508

■ 0.2665, 0.1464,  
0.0000

■ 0.0000, 0.0000,  
0.0000

■ 58.2511, 59.0556,  
51.5087

■ 58.2511, 59.0556,  
51.5087

■ 53.4589, 52.7912,  
39.6754

■ 63.6374, 65.9326,  
65.3124

■ 49.2336, 47.1138,  
29.7176

■ 69.6341, 73.4314,  
81.1680

■ 45.5526, 42.0071,  
21.5379

■ 76.2630, 81.5709,  
99.1570

■ 42.3900, 37.4512,  
15.0287

■ 81.3094, 89.4731,  
107.5923

■ 39.7170, 33.4247,  
10.0704

■ 83.6290, 94.1123,  
108.3655

■ 37.5020, 29.9044,  
6.5275

■ 35.7082, 26.8647,  
4.2402

■ 34.2835, 24.2733,  
2.9702

■ 34.0981, 23.9305,  
2.8219

# Harmonies

## Analogous

The Analogous color harmony consists of three colors that are next to each other on the color wheel.



60.4512, 59.0556, 55.7982



58.2511, 59.0556, 51.5087



55.5459, 59.0556, 50.5172

# Triad

The Triadic color harmony groups three colors that are evenly spaced from another and form a triangle on the color wheel.



58.2511, 59.0556, 51.5087



51.0849, 59.0556, 65.9964



59.2989, 59.0556, 77.1417

# Complementary

The Complementary color scheme is a pair of colors which are on the opposite of each other on the color wheel.



58.2511, 59.0556, 51.5087



53.2291, 57.6343, 76.7261

# Split Complementary

Split-complementary colors differ from the complementary color scheme. The scheme consists of three colors, the original color and two neighbors of the complement color.



56.7193, 59.0556, 80.3896



58.2511, 59.0556, 51.5087



52.0209, 59.0556, 73.6276

# Square

The Square scheme is like the rectangle color scheme, but the four colors are evenly spaced on the color wheel.



58.2511, 59.0556, 51.5087



51.4652, 59.0556, 58.4880



54.0621, 59.0556, 79.0544



61.0697, 59.0556, 70.4881



# Rectangle

The Rectangle color scheme consists of four colors that form a rectangle on the color wheel.



58.2511, 59.0556, 51.5087



53.8312, 59.0556, 51.7823



54.0621, 59.0556, 79.0544



58.4945, 59.0556, 78.6915

# Sweetspot

The Sweet Spot groups the original color and five complimentary colors.



58.2527, 59.0582, 51.5099



90.0069, 93.7000, 95.5466



56.9480, 52.3384, 63.7473



19.1517, 19.9130, 20.1534



0.0000, 0.0000, 0.0000



20.3446, 21.4041, 23.3091

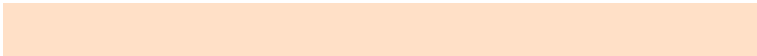


# Same Dimension

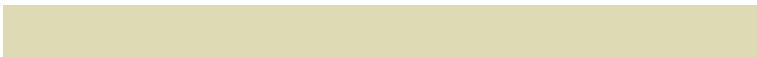
The Same Dimension uses a secret algorithm to generate beautiful new colors.



58.2527, 59.0582, 51.5099



78.0681, 78.4406, 64.9979



63.1982, 68.9492, 53.1584



13.5242, 13.9877, 13.7127



19.9166, 14.1188, 1.6755



1.3751, 1.0844, 0.1368

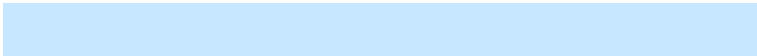


# Inverse Universe

The Inverse Universe completely reimagines the original color for something new.



53.2291, 57.6343, 76.7261



69.9751, 76.1454, 105.6172



48.7528, 48.6816, 75.2340



12.9415, 13.8227, 16.6381



11.8799, 11.6292, 41.3569

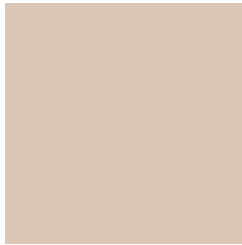


0.8549, 0.9240, 2.7077



# Previews

## White Background



This preview shows how the XYZ color 58.2511, 59.0556, 51.5087 looks on a white background.

## Color Contrast Check

Large Text (above 18pt) WCAG AA × Fail

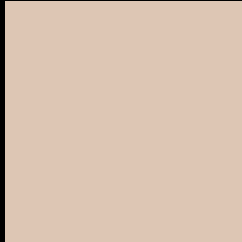
Any Text WCAG AA × Fail

Large Text (above 18pt) WCAG AAA × Fail

Any Text WCAG AAA × Fail



# Black Background



This preview shows how the XYZ color 58.2511, 59.0556, 51.5087 looks on a black background.

## Color Contrast Check

Large Text (above 18pt) WCAG AA ✓ Pass

Any Text WCAG AA ✓ Pass

Large Text (above 18pt) WCAG AAA ✓ Pass

Any Text WCAG AAA ✓ Pass

If you want to check with other color combinations, try the [Color Contrast Checker](#).

**XYZ 58.2511, 59.0556, 51.5087**

## **Background**



This preview shows how black text looks on a background with the XYZ color 58.2511, 59.0556, 51.5087.



This preview shows how white text looks on a background with the XYZ color 58.2511, 59.0556,



# Color Blindness Simulation

Color vision deficiency is a very complex topic, and I could not describe the different causes any better than Wikipedia does, so if you want to learn more, you should check out their [article about color blindness](#).

## Dichromacy



### Original Color

58.2511, 59.0556, 51.5087

### Protanopia

55.9085, 58.8523, 52.6689

### Deuteranopia

60.1687, 59.0244, 51.9377



## Tritanopia

61.8517, 59.1946, 68.4874

# Trichromacy



## Original Color

58.2511, 59.0556, 51.5087

## Protanomaly

56.7263, 58.9409, 52.1030

## Deuteranomaly

59.4444, 58.9848, 51.9682

## Tritanomaly

60.4486, 58.9547, 61.6195

# Monochromacy



## Original Color

58.2511, 59.0556, 51.5087

## Achromatopsia

56.7640, 59.7202, 65.0353

## Achromatomaly

57.3153, 59.4151, 60.0772

# CSS Examples

## Text

The CSS property to change the color of the text to XYZ 58.2511, 59.0556, 51.5087 is called "color". The color property can be set on classes, ids or directly on the HTML element.

This example shows how text in the color `rgb(221, 198, 180)` looks like.

```
.text, #text, p{  
    color:rgb(221, 198, 180)  
}
```

If you want to add a text shadow in that color use the text-shadow property, you can generate a text shadow directly with our [CSS Text Shadow Generator](#).

Here you see how black text with a 4 pixel rgb(221, 198, 180) colored shadow looks like.

```
.shadow{ text-shadow: 4px 4px 2px rgb(221, 198, 180) }
```

## Border

The CSS property to change the border of an element to XYZ 58.2511, 59.0556, 51.5087 is called "border". The border property can be set on classes, ids or directly on the HTML element.

This example shows the color as border, it can be applied via the CSS property "border" or "border-color".

```
.border, #border, table{ border:4px solid rgb(221, 198, 180) }
```



If only the border color should be changed use the property `border-color`.

```
.border{ border-color:rgb(221, 198, 180) }
```

If you want to add a box shadow in that color use:

Here you see how a box with a 4 pixel `rgb(221, 198, 180)` colored shadow looks like.

```
.boxshadow{ -moz-box-shadow:4px 4px 4px  
4px rgb(221, 198, 180); -webkit-box-  
shadow:4px 4px 4px 4px rgb(221, 198, 180);  
box-shadow:4px 4px 4px 4px rgb(221, 198,  
180) }
```

# Background

The CSS property to change the background color of an element to XYZ 58.2511, 59.0556, 51.5087 is called "background". The background property can be set on classes, ids or directly on the HTML element.

```
.background, #background, body{  
background: rgb(221, 198, 180) }
```

If only the background color should be changed can be used:

```
.background{ background-color: rgb(221,  
198, 180) }
```

This example shows the color as background, it is applied via the CSS property "background".

To optimize and compress your CSS code, you can use our [online CSS compressor and optimizer](#) based on csstidy. If you want to create a linear or radial gradient as background or border, check our [CSS Gradient Generator](#).

Hey! You found this booklet interesting? Support Converting Colors with the new Membership Option!

The pro membership hides all ads, plus gives you double the colors in the color bucket, and more awesome pro features!

**[Learn more, Memberships starting at \\$2.50/m!](#)**

**Follow me  
on Twitter!**

@ConvertingColor