

Converting Colors

XYZ(58.3157, 50.3990, 52.1559)

Have a look what the booklet for
XYZ(58.3157, 50.3990, 52.1559)
contains.

XYZ(58.2863, 50.3873, 52.0011)	3
<i>Conversions</i>	4
<i>Details</i>	6
<i>Harmonies</i>	12
<i>Previews</i>	24
<i>Color Blindness Simulation</i>	28
<i>CSS Examples</i>	31

Color

**XYZ(58.2863, 50.3873,
52.0011)**

Conversions

Conversions Part 1

Format	Color
Hex	EEAAB8
RGB	238, 170, 184
RGB Percent	93%, 67%, 72%
CMY	0.0667, 0.3333, 0.2784
CMYK	0.00, 0.29, 0.23, 0.07
HSL	348°, 67%, 80%
HSV	348°, 29%, 93%
XYZ	58.2863, 50.3873, 52.0011
YIQ	191.9280, 36.0340, 18.7700

Conversions

Conversions Part 2

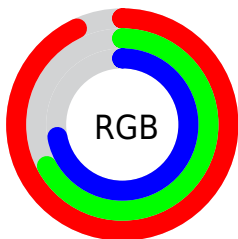
Format	Color
R _Y B	238, 170, 184
Decimal	15641272
CIE Lab	76.31, 26.92, 2.82
CIE LCh	76, 27.070, 5.973
Yxy	50.3873, 0.3628, 0.3136
Android (android.graphics.Color)	4293831352 (0xFFEEAAB8)
YUV	191.9280, -3.9085, 40.4051
Hunter-Lab	70.9840, 22.3477, 6.2544

Details

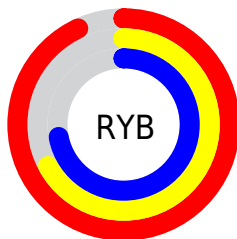
The XYZ color **58.2863, 50.3873, 52.0011** is a light color, and the websafe version is hex **CC9999**. A complement of this color would be **60.6087, 75.0780, 81.8218**, and the grayscale version is **50.0695, 52.6770, 57.3652**.

A 20% lighter version of the original color is **84.1645, 81.9440, 93.8189**, and **29.5141, 24.1850, 24.5853** is the 20% darker color. If you saturate the color by 10%, you get **52.3713, 41.5188, 40.8986**, and if you desaturate by 10%, it is **65.2765, 60.9816, 64.7692**.

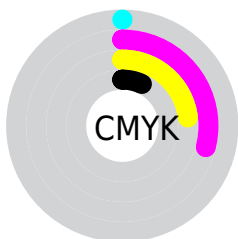
Distribution



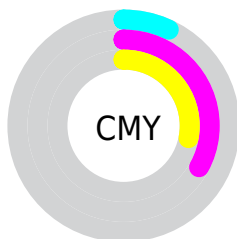
- Red (93%)
- Green (67%)
- Blue (72%)



- Red (93%)
- Yellow (67%)
- Blue (72%)



- Cyan (0%)
- Magenta (29%)
- Yellow (23%)
- Black (7%)



- Cyan (7%)
- Magenta (33%)
- Yellow (28%)

Brightness & Saturation Gradients

These gradients show how the XYZ color 58.2863, 50.3873, 52.0011 changes by changing the brightness by 10 percent. The first figure shows a shift by +10% for each color and the second figure -10%.

Similar to the brightness gradients but the following saturation gradients show a change of the XYZ color 58.2863, 50.3873, 52.0011 by changing the saturation by 10% instead.

58.2863, 50.3873,
52.0011

58.2863, 50.3873,
52.0011

408.1886,
388.1786, 411.3979

42.2830, 35.7212,
36.6237

101.4602, 90.7485,
94.5595

29.5150, 24.2190,
24.6228

129.3616,
117.2123, 122.5775

19.6170, 15.4961,
15.5798

161.9597,
148.3776, 155.6462

12.2236, 9.1683,
9.0762

199.6199,
184.6286, 194.1840

6.9694, 4.8511,
4.6934

242.7075,
226.3499, 238.6096

3.4892, 2.1602,
2.0129

291.5879,

1.4174, 0.6982,

273.9257, 289.3414

0.5632

346.6265,
327.7405, 346.7980

■ 0.2686, 0.0000,
0.0000

■ 0.0000, 0.0000,
0.0000

■ 58.2863, 50.3873,
52.0011

■ 58.2863, 50.3873,
52.0011

■ 52.3713, 41.5188,
40.8986

■ 65.2765, 60.9816,
64.7692

■ 47.4732, 34.2777,
31.3893

■ 73.3879, 73.3793,
79.2651

■ 43.5348, 28.5665,
23.3997

■ 82.6688, 87.6618,
95.5516

■ 40.4908, 24.2742,
16.8494

■ 89.0700, 96.9172,
108.6201

■ 38.2681, 21.2750,
11.6500

■ 36.7810, 19.4203,
7.7029

■ 35.9099, 18.4963,
4.8900

■ 35.8141, 18.3988,
4.5680

Harmonies

Analogous

The Analogous color harmony consists of three colors that are next to each other on the color wheel.



57.3860, 50.3873, 67.0693



58.2863, 50.3873, 52.0011



56.2460, 50.3873, 40.0069

Triad

The Triadic color harmony groups three colors that are evenly spaced from another and form a triangle on the color wheel.



58.2863, 50.3873, 52.0011



42.3761, 50.3873, 35.1827



44.0208, 50.3873, 84.6107

Complementary

The Complementary color scheme is a pair of colors which are on the opposite of each other on the color wheel.



58.2863, 50.3873, 52.0011



60.6087, 75.0780, 81.8218

Split Complementary

Split-complementary colors differ from the complementary color scheme. The scheme consists of three colors, the original color and two neighbors of the complement color.



40.4083, 50.3873, 73.0055



58.2863, 50.3873, 52.0011



39.5068, 50.3873, 44.2359

Square

The Square scheme is like the rectangle color scheme, but the four colors are evenly spaced on the color wheel.



58.2863, 50.3873, 52.0011



46.8815, 50.3873, 31.4647



38.8126, 50.3873, 57.8284



48.9161, 50.3873, 87.6820

Rectangle

The Rectangle color scheme consists of four colors that form a rectangle on the color wheel.



58.2863, 50.3873, 52.0011



53.5724, 50.3873, 34.7785



38.8126, 50.3873, 57.8284



42.6273, 50.3873, 81.4893

Sweetspot

The Sweet Spot groups the original color and five complimentary colors.



58.2877, 50.3896, 52.0021



85.3637, 85.1026, 91.8749



60.3226, 50.6554, 87.4872



17.9588, 17.7364, 19.1105



0.0000, 0.0000, 0.0000



20.3446, 21.4041, 23.3091

Same Dimension

The Same Dimension uses a secret algorithm to generate beautiful new colors.



58.2877, 50.3896, 52.0021



64.1765, 52.9275, 53.3690



60.7722, 57.5916, 45.9465



15.9059, 15.8121, 17.0605



20.0179, 10.2796, 2.7451



1.7001, 0.8691, 0.4116

Inverse Universe

The Inverse Universe completely reimagines the original color for something new.



58.2877, 50.3896, 52.0021



64.1765, 52.9275, 53.3690



57.2740, 65.2448, 90.4640



15.9059, 15.8121, 17.0605



20.0179, 10.2796, 2.7451



1.7001, 0.8691, 0.4116

Previews

White Background



This preview shows how the XYZ color 58.2863, 50.3873, 52.0011 looks on a white background.

Color Contrast Check

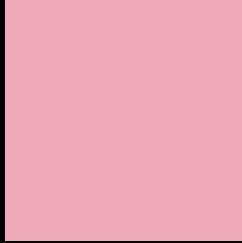
Large Text (above 18pt) WCAG AA × Fail

Any Text WCAG AA × Fail

Large Text (above 18pt) WCAG AAA × Fail

Any Text WCAG AAA × Fail

Black Background



This preview shows how the XYZ color 58.2863, 50.3873, 52.0011 looks on a black background.

Color Contrast Check

Large Text (above 18pt) WCAG AA ✓ Pass

Any Text WCAG AA ✓ Pass

Large Text (above 18pt) WCAG AAA ✓ Pass

Any Text WCAG AAA ✓ Pass

If you want to check with other color combinations, try the [Color Contrast Checker](#).

XYZ 58.2863, 50.3873, 52.0011

Background



This preview shows how black text looks on a background with the XYZ color 58.2863, 50.3873, 52.0011.



This preview shows how white text looks on a background with the XYZ color 58.2863, 50.3873,

Color Blindness Simulation

Color vision deficiency is a very complex topic, and I could not describe the different causes any better than Wikipedia does, so if you want to learn more, you should check out their [article about color blindness](#).

Dichromacy



Original Color

58.2863, 50.3873, 52.0011

Protanopia

48.9560, 50.8086, 58.2657

Deuteranopia

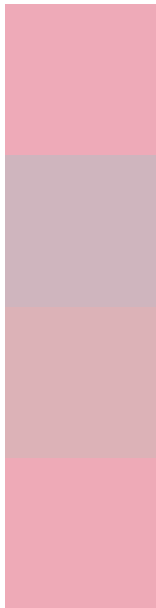
51.4659, 50.3886, 51.2694



Tritanopia

58.1819, 50.3455, 51.4509

Trichromacy



Original Color

58.2863, 50.3873, 52.0011

Protanomaly

51.5503, 50.0309, 55.6551

Deuteranomaly

53.9828, 50.4753, 51.6973

Tritanomaly

58.1819, 50.3455, 51.4509

Monochromacy



Original Color

58.2863, 50.3873, 52.0011

Achromatopsia

50.1023, 52.7115, 57.4028

Achromatomaly

52.6203, 51.5104, 55.3132

CSS Examples

Text

The CSS property to change the color of the text to XYZ 58.2863, 50.3873, 52.0011 is called "color". The color property can be set on classes, ids or directly on the HTML element.

This example shows how text in the color `rgb(238, 170, 184)` looks like.

```
.text, #text, p{  
    color:rgb(238, 170, 184)  
}
```

If you want to add a text shadow in that color use the text-shadow property, you can generate a text shadow directly with our [CSS Text Shadow Generator](#).

Here you see how black text with a 4 pixel rgb(238, 170, 184) colored shadow looks like.

```
.shadow{ text-shadow: 4px 4px 2px rgb(238, 170, 184) }
```

Border

The CSS property to change the border of an element to XYZ 58.2863, 50.3873, 52.0011 is called "border". The border property can be set on classes, ids or directly on the HTML element.

This example shows the color as border, it can be applied via the CSS property "border" or "border-color".

```
.border, #border, table{ border:4px solid rgb(238, 170, 184) }
```


If only the border color should be changed use the property `border-color`.

```
.border{ border-color:rgb(238, 170, 184) }
```

If you want to add a box shadow in that color use:

Here you see how a box with a 4 pixel `rgb(238, 170, 184)` colored shadow looks like.

```
.boxshadow{ -moz-box-shadow:4px 4px 4px  
4px rgb(238, 170, 184); -webkit-box-  
shadow:4px 4px 4px 4px rgb(238, 170, 184);  
box-shadow:4px 4px 4px 4px rgb(238, 170,  
184) }
```

Background

The CSS property to change the background color of an element to XYZ 58.2863, 50.3873, 52.0011 is called "background". The background property can be set on classes, ids or directly on the HTML element.

```
.background, #background, body{  
background: rgb(238, 170, 184) }
```

If only the background color should be changed can be used:

```
.background{ background-color: rgb(238,  
170, 184) }
```

This example shows the color as background, it is applied via the CSS property "background".

To optimize and compress your CSS code, you can use our [online CSS compressor and optimizer](#) based on csstidy. If you want to create a linear or radial gradient as background or border, check our [CSS Gradient Generator](#).

Hey! You found this booklet interesting? Support Converting Colors with the new Membership Option!

The pro membership hides all ads, plus gives you double the colors in the color bucket, and more awesome pro features!

[Learn more, Memberships starting at \\$2.50/m!](#)

**Follow me
on Twitter!**

@ConvertingColor