

Converting Colors

XYZ(58.3193, 57.6832, 54.4054)

Have a look what the booklet for
XYZ(58.3193, 57.6832, 54.4054)
contains.

XYZ(58.2789, 57.6583, 54.5119)	3
<i>Conversions</i>	4
<i>Details</i>	6
<i>Harmonies</i>	12
<i>Previews</i>	24
<i>Color Blindness Simulation</i>	28
<i>CSS Examples</i>	31

Color

**XYZ(58.2789, 57.6583,
54.5119)**

Conversions

Conversions Part 1

Format	Color
Hex	DEC2BA
RGB	222, 194, 186
RGB Percent	87%, 76%, 73%
CMY	0.1294, 0.2392, 0.2706
CMYK	0.00, 0.13, 0.16, 0.13
HSL	13°, 35%, 80%
HSV	13°, 16%, 87%
XYZ	58.2789, 57.6583, 54.5119
YIQ	201.4600, 19.2560, 3.4480

Conversions

Conversions Part 2

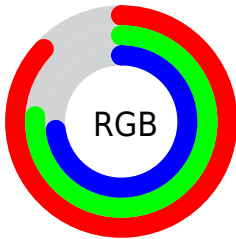
Format	Color
R _Y B	222, 196, 186
Decimal	14598842
CIE Lab	80.55, 8.62, 7.65
CIE LCh	81, 11.528, 41.605
Yxy	57.6583, 0.3419, 0.3383
Android (android.graphics.Color)	4292788922 (0xFFDEC2BA)
YUV	201.4600, -7.6218, 18.0136
Hunter-Lab	75.9331, 4.1165, 10.5892

Details

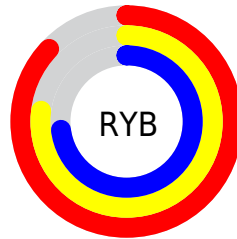
The XYZ color **58.2789, 57.6583, 54.5119** is a light color, and the websafe version is hex **FFCCCC**. A complement of this color would be **57.4807, 63.8048, 78.3938**, and the grayscale version is **55.8416, 58.7497, 63.9784**.

A 20% lighter version of the original color is **91.7642, 96.6652, 97.8262**, and **29.5481, 28.6651, 26.1659** is the 20% darker color. If you saturate the color by 10%, you get **52.4784, 49.5450, 41.8252**, and if you desaturate by 10%, it is **64.8957, 66.8163, 69.2810**.

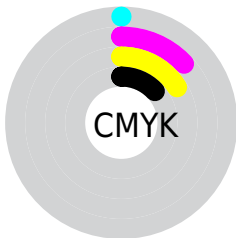
Distribution



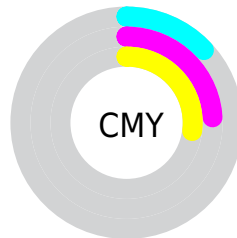
- Red (87%)
- Green (76%)
- Blue (73%)



- Red (87%)
- Yellow (77%)
- Blue (73%)



- Cyan (0%)
- Magenta (13%)
- Yellow (16%)
- Black (13%)





- Cyan (13%)
- Magenta (24%)
- Yellow (27%)

Brightness & Saturation Gradients


These gradients show how the XYZ color 58.2789, 57.6583, 54.5119 changes by changing the brightness by 10 percent. The first figure shows a shift by +10% for each color and the second figure -10%.


Similar to the brightness gradients but the following saturation gradients show a change of the XYZ color 58.2789, 57.6583, 54.5119 by changing the saturation by 10% instead.


 58.2789, 57.6583,
54.5119

 58.2789, 57.6583,
54.5119


408.1615,
415.9115, 421.2887

 42.2770, 41.5340,
38.6151


 101.4495,
101.4251, 98.2894

 29.5103, 28.7366,
26.1549


129.3490,
129.8364, 127.0072

 19.6134, 18.8816,
16.7128


161.9451,
163.1121, 160.8358

 12.2210, 11.5848,
9.8701

199.6030,
201.6367, 200.1936

 6.9676, 6.4616,
5.2085

242.6883,
245.7946, 245.4993

 3.4880, 3.1278,
2.3092

291.5663,

 1.4168, 1.1988,

295.9700, 297.1713

0.7364

346.6022,
352.5475, 355.6283

■ 0.2681, 0.0607,
0.0000

■ 0.0000, 0.0000,
0.0000

■ 58.2789, 57.6583,
54.5119

■ 58.2789, 57.6583,
54.5119

■ 52.4784, 49.5450,
41.8252

■ 64.8957, 66.8163,
69.2810

■ 47.4573, 42.4314,
31.1233

■ 72.3543, 77.0464,
86.2169

■ 43.1830, 36.2806,
22.3062

■ 80.6850, 88.3849,
105.4036

■ 39.6186, 31.0507,
15.2637

■ 83.9344, 94.2697,
108.3798

■ 36.7238, 26.6963,
9.8742

■ 34.4542, 23.1683,
6.0002

■ 32.7593, 20.4121,
3.4822

■ 31.5794, 18.3660,
2.1218

■ 31.2378, 17.7564,
1.7809

Harmonies

Analogous

The Analogous color harmony consists of three colors that are next to each other on the color wheel.



59.3857, 57.6583, 60.1928



58.2789, 57.6583, 54.5119



56.2523, 57.6583, 51.1991

Triad

The Triadic color harmony groups three colors that are evenly spaced from another and form a triangle on the color wheel.



58.2789, 57.6583, 54.5119



50.5936, 57.6583, 58.7534



55.7237, 57.6583, 76.4427

Complementary

The Complementary color scheme is a pair of colors which are on the opposite of each other on the color wheel.



58.2789, 57.6583, 54.5119



57.4807, 63.8048, 78.3938

Split Complementary

Split-complementary colors differ from the complementary color scheme. The scheme consists of three colors, the original color and two neighbors of the complement color.



53.3778, 57.6583, 75.9876



58.2789, 57.6583, 54.5119



50.4613, 57.6583, 65.4405

Square

The Square scheme is like the rectangle color scheme, but the four colors are evenly spaced on the color wheel.



58.2789, 57.6583, 54.5119



51.8338, 57.6583, 53.5236



51.4671, 57.6583, 71.8447



57.8824, 57.6583, 73.0466

Rectangle

The Rectangle color scheme consists of four colors that form a rectangle on the color wheel.



58.2789, 57.6583, 54.5119



54.6751, 57.6583, 50.6240



51.4671, 57.6583, 71.8447



54.9301, 57.6583, 76.7413

Sweetspot

The Sweet Spot groups the original color and five complimentary colors.



58.2805, 57.6609, 54.5131



89.9827, 93.0420, 97.4177



59.8469, 55.5134, 71.3138



19.1126, 19.7120, 20.5191



0.0000, 0.0000, 0.0000



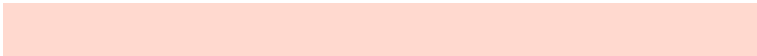
20.3446, 21.4041, 23.3091

Same Dimension

The Same Dimension uses a secret algorithm to generate beautiful new colors.



58.2805, 57.6609, 54.5131



77.3435, 75.5349, 69.2467



62.4813, 66.0624, 55.9134



13.9531, 14.1923, 14.3108



18.6226, 10.6832, 1.0805



1.3573, 0.8735, 0.0971

Inverse Universe

The Inverse Universe completely reimagines the original color for something new.



57.4807, 63.8048, 78.3938



76.0759, 85.2593, 107.0548



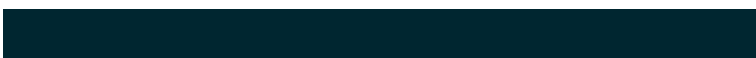
53.2203, 55.2839, 76.9736



13.8446, 15.0283, 17.5587



16.7531, 20.9757, 44.2141



1.2257, 1.5829, 3.0862

Previews

White Background



This preview shows how the XYZ color 58.2789, 57.6583, 54.5119 looks on a white background.

Color Contrast Check

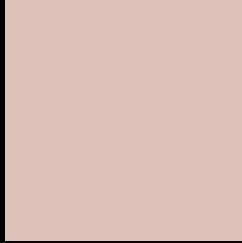
Large Text (above 18pt) WCAG AA × Fail

Any Text WCAG AA × Fail

Large Text (above 18pt) WCAG AAA × Fail

Any Text WCAG AAA × Fail

Black Background



This preview shows how the XYZ color 58.2789, 57.6583, 54.5119 looks on a black background.

Color Contrast Check

Large Text (above 18pt) WCAG AA ✓ Pass

Any Text WCAG AA ✓ Pass

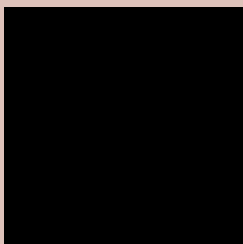
Large Text (above 18pt) WCAG AAA ✓ Pass

Any Text WCAG AAA ✓ Pass

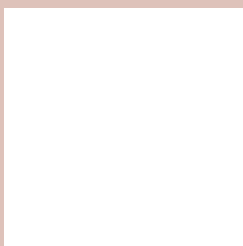
If you want to check with other color combinations, try the [Color Contrast Checker](#).

XYZ 58.2789, 57.6583, 54.5119

Background



This preview shows how black text looks on a background with the XYZ color 58.2789, 57.6583, 54.5119.

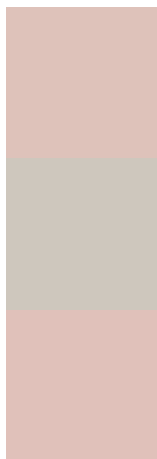


This preview shows how white text looks on a background with the XYZ color 58.2789, 57.6583,

Color Blindness Simulation

Color vision deficiency is a very complex topic, and I could not describe the different causes any better than Wikipedia does, so if you want to learn more, you should check out their [article about color blindness](#).

Dichromacy



Original Color

58.2789, 57.6583, 54.5119

Protanopia

55.0623, 57.6428, 56.3682

Deuteranopia

58.6734, 57.5324, 54.4668



Tritanopia

60.8227, 57.7254, 66.3289

Trichromacy



Original Color

58.2789, 57.6583, 54.5119

Protanomaly

56.1947, 57.5604, 55.7254

Deuteranomaly

58.3643, 57.3731, 54.4524

Tritanomaly

59.8989, 57.6701, 62.0073

Monochromacy



Original Color

58.2789, 57.6583, 54.5119

Achromatopsia

55.5167, 58.4078, 63.6061

Achromatomaly

56.4524, 57.9290, 60.4306

CSS Examples

Text

The CSS property to change the color of the text to XYZ 58.2789, 57.6583, 54.5119 is called "color". The color property can be set on classes, ids or directly on the HTML element.

This example shows how text in the color `rgb(222, 194, 186)` looks like.

```
.text, #text, p{  
    color:rgb(222, 194, 186)  
}
```

If you want to add a text shadow in that color use the text-shadow property, you can generate a text shadow directly with our [CSS Text Shadow Generator](#).

Here you see how black text with a 4 pixel rgb(222, 194, 186) colored shadow looks like.

```
.shadow{ text-shadow: 4px 4px 2px rgb(222, 194, 186) }
```

Border

The CSS property to change the border of an element to XYZ 58.2789, 57.6583, 54.5119 is called "border". The border property can be set on classes, ids or directly on the HTML element.

This example shows the color as border, it can be applied via the CSS property "border" or "border-color".

```
.border, #border, table{ border:4px solid rgb(222, 194, 186) }
```


If only the border color should be changed use the property `border-color`.

```
.border{ border-color:rgb(222, 194, 186) }
```

If you want to add a box shadow in that color use:

Here you see how a box with a 4 pixel `rgb(222, 194, 186)` colored shadow looks like.

```
.boxshadow{ -moz-box-shadow:4px 4px 4px  
4px rgb(222, 194, 186); -webkit-box-  
shadow:4px 4px 4px 4px rgb(222, 194, 186);  
box-shadow:4px 4px 4px 4px rgb(222, 194,  
186) }
```

Background

The CSS property to change the background color of an element to XYZ 58.2789, 57.6583, 54.5119 is called "background". The background property can be set on classes, ids or directly on the HTML element.

```
.background, #background, body{  
background: rgb(222, 194, 186) }
```

If only the background color should be changed can be used:

```
.background{ background-color: rgb(222,  
194, 186) }
```

This example shows the color as background, it is applied via the CSS property "background".

To optimize and compress your CSS code, you can use our [online CSS compressor and optimizer](#) based on csstidy. If you want to create a linear or radial gradient as background or border, check our [CSS Gradient Generator](#).

Hey! You found this booklet interesting? Support Converting Colors with the new Membership Option!

The pro membership hides all ads, plus gives you double the colors in the color bucket, and more awesome pro features!

[Learn more, Memberships starting at \\$2.50/m!](#)

**Follow me
on Twitter!**

@ConvertingColor