

Converting Colors

XYZ(58.3610, 58.4796, 55.9848)

Have a look what the booklet for
XYZ(58.3610, 58.4796, 55.9848)
contains.

XYZ(58.3322, 58.3263, 55.7606)	3
<i>Conversions</i>	4
<i>Details</i>	6
<i>Harmonies</i>	12
<i>Previews</i>	24
<i>Color Blindness Simulation</i>	28
<i>CSS Examples</i>	31

Color

**XYZ(58.3322, 58.3263,
55.7606)**

Conversions

Conversions Part 1

Format	Color
Hex	DCC4BC
RGB	220, 196, 188
RGB Percent	86%, 77%, 74%
CMY	0.1373, 0.2314, 0.2627
CMYK	0.00, 0.11, 0.15, 0.14
HSL	15°, 31%, 80%
HSV	15°, 15%, 86%
XYZ	58.3322, 58.3263, 55.7606
YIQ	202.2640, 16.8720, 2.6000

Conversions

Conversions Part 2

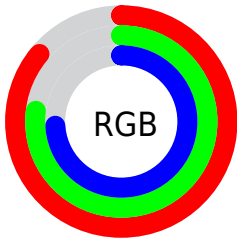
Format	Color
R _Y B	220, 199, 188
Decimal	14468284
CIE Lab	80.92, 7.15, 7.09
CIE LCh	81, 10.069, 44.770
Yxy	58.3263, 0.3383, 0.3383
Android (android.graphics.Color)	4292658364 (0xFFDCC4BC)
YUV	202.2640, -7.0322, 15.5545
Hunter-Lab	76.3717, 2.6868, 10.1712

Details

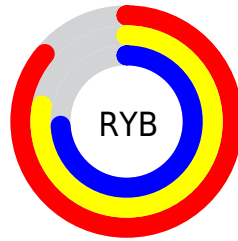
The XYZ color **58.3322, 58.3263, 55.7606** is a light color, and the websafe version is hex **CCCCCC**. A complement of this color would be **57.2005, 62.9443, 76.8453**, and the grayscale version is **56.3403, 59.2744, 64.5498**.

A 20% lighter version of the original color is **92.6944, 98.0422, 99.6265**, and **29.5632, 29.0946, 26.9793** is the 20% darker color. If you saturate the color by 10%, you get **52.6206, 50.4132, 43.0344**, and if you desaturate by 10%, it is **64.8178, 67.2076, 70.5298**.

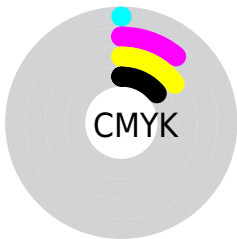
Distribution



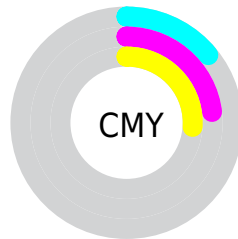
- Red (86%)
- Green (77%)
- Blue (74%)



- Red (86%)
- Yellow (78%)
- Blue (74%)



- Cyan (0%)
- Magenta (11%)
- Yellow (15%)
- Black (14%)





- Cyan (14%)
- Magenta (23%)
- Yellow (26%)

Brightness & Saturation Gradients


These gradients show how the XYZ color 58.3322, 58.3263, 55.7606 changes by changing the brightness by 10 percent. The first figure shows a shift by +10% for each color and the second figure -10%.


Similar to the brightness gradients but the following saturation gradients show a change of the XYZ color 58.3322, 58.3263, 55.7606 by changing the saturation by 10% instead.


 58.3322, 58.3263,
55.7606

 58.3322, 58.3263,
55.7606


408.3566,
418.4007, 426.1516

 42.3201, 42.0710,
39.6083


 101.5266,
102.3979, 100.1368

 29.5442, 29.1569,
26.9218


129.4397,
130.9830, 129.1977

 19.6392, 19.1996,
17.2826


162.0504,
164.4468, 163.3986

 12.2398, 11.8146,
10.2721

199.7241,
203.1737, 203.1580

 6.9806, 6.6175,
5.4718

242.8263,
247.5482, 248.8945

 3.4962, 3.2241,
2.4631

291.7222,

 1.4213, 1.2498,

297.9546, 301.0266

0.8205

346.7771,
354.7773, 359.9728

■ 0.2713, 0.1018,
0.0000

■ 0.0000, 0.0000,
0.0000

■ 58.3322, 58.3263,
55.7606

■ 58.3322, 58.3263,
55.7606

■ 52.6206, 50.4132,
43.0344

■ 64.8178, 67.2076,
70.5298

■ 47.6487, 43.4276,
32.2571

■ 72.1004, 77.0806,
87.4230

■ 43.3866, 37.3374,
23.3328

■ 80.2081, 87.9777,
106.5213

■ 39.8005, 32.1054,
16.1561

■ 83.3254, 93.9558,
108.3513

■ 36.8538, 27.6922,
10.6106

■ 34.5059, 24.0547,
6.5659

■ 32.7114, 21.1457,
3.8709

■ 31.4167, 18.9121,
2.3424

■ 30.8829, 17.9508,
1.8371

Harmonies

Analogous

The Analogous color harmony consists of three colors that are next to each other on the color wheel.



59.4045, 58.3263, 60.6254



58.3322, 58.3263, 55.7606



56.4971, 58.3263, 53.0620

Triad

The Triadic color harmony groups three colors that are evenly spaced from another and form a triangle on the color wheel.



58.3322, 58.3263, 55.7606



51.6589, 58.3263, 60.5391



56.4656, 58.3263, 75.2676

Complementary

The Complementary color scheme is a pair of colors which are on the opposite of each other on the color wheel.



58.3322, 58.3263, 55.7606



57.2005, 62.9443, 76.8453

Split Complementary

Split-complementary colors differ from the complementary color scheme. The scheme consists of three colors, the original color and two neighbors of the complement color.



54.3910, 58.3263, 75.2409



58.3322, 58.3263, 55.7606



51.6509, 58.3263, 66.4794

Square

The Square scheme is like the rectangle color scheme, but the four colors are evenly spaced on the color wheel.



58.3322, 58.3263, 55.7606



52.6620, 58.3263, 55.7009



52.6400, 58.3263, 71.9405



58.3087, 58.3263, 72.0113

Rectangle

The Rectangle color scheme consists of four colors that form a rectangle on the color wheel.



58.3322, 58.3263, 55.7606



55.1047, 58.3263, 52.7402



52.6400, 58.3263, 71.9405



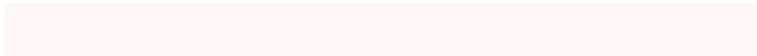
55.7714, 58.3263, 75.6486

Sweetspot

The Sweet Spot groups the original color and five complimentary colors.



58.3338, 58.3289, 55.7618



91.0592, 94.5770, 99.6820



59.3827, 55.9363, 69.9549



19.3341, 20.0305, 20.9766



0.0000, 0.0000, 0.0000



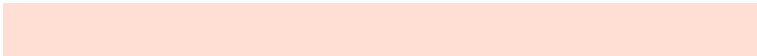
20.3446, 21.4041, 23.3091

Same Dimension

The Same Dimension uses a secret algorithm to generate beautiful new colors.



58.3338, 58.3289, 55.7618



79.3320, 78.5006, 73.0270



62.1364, 65.9341, 57.0294



13.3193, 13.5780, 13.6444



18.1996, 10.6848, 1.1032



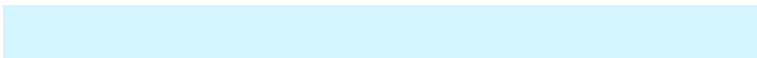
1.2475, 0.8291, 0.0943

Inverse Universe

The Inverse Universe completely reimagines the original color for something new.



57.2005, 62.9443, 76.8453



77.4985, 85.9610, 107.1153



53.3980, 55.3393, 75.5779



13.1547, 14.2492, 16.7092



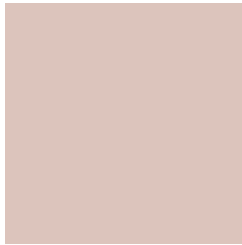
15.5680, 19.0054, 42.5863



1.0753, 1.3646, 2.7812

Previews

White Background



This preview shows how the XYZ color 58.3322, 58.3263, 55.7606 looks on a white background.

Color Contrast Check

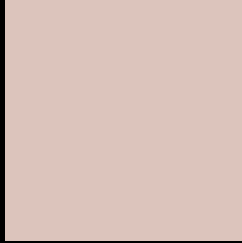
Large Text (above 18pt) WCAG AA × Fail

Any Text WCAG AA × Fail

Large Text (above 18pt) WCAG AAA × Fail

Any Text WCAG AAA × Fail

Black Background



This preview shows how the XYZ color 58.3322, 58.3263, 55.7606 looks on a black background.

Color Contrast Check

Large Text (above 18pt) WCAG AA ✓ Pass

Any Text WCAG AA ✓ Pass

Large Text (above 18pt) WCAG AAA ✓ Pass

Any Text WCAG AAA ✓ Pass

If you want to check with other color combinations, try the [Color Contrast Checker](#).

XYZ 58.3322, 58.3263, 55.7606

Background



This preview shows how black text looks on a background with the XYZ color 58.3322, 58.3263, 55.7606.



This preview shows how white text looks on a background with the XYZ color 58.3322, 58.3263,

55.7606.

Color Blindness Simulation

Color vision deficiency is a very complex topic, and I could not describe the different causes any better than Wikipedia does, so if you want to learn more, you should check out their [article about color blindness](#).

Dichromacy



Original Color

58.3322, 58.3263, 55.7606

Protanopia

55.6807, 58.2917, 57.0319

Deuteranopia

59.4202, 58.2220, 55.6831



Tritanopia

60.8866, 58.3820, 67.7343

Trichromacy



Original Color

58.3322, 58.3263, 55.7606

Protanomaly

56.7601, 58.5180, 56.4476

Deuteranomaly

59.0236, 58.3490, 55.7286

Tritanomaly

59.9586, 58.3302, 63.3570

Monochromacy



Original Color

58.3322, 58.3263, 55.7606

Achromatopsia

56.1383, 59.0619, 64.3184

Achromatomaly

57.0268, 58.8951, 61.1856

CSS Examples

Text

The CSS property to change the color of the text to XYZ 58.3322, 58.3263, 55.7606 is called "color". The color property can be set on classes, ids or directly on the HTML element.

This example shows how text in the color `rgb(220, 196, 188)` looks like.

```
.text, #text, p{  
    color:rgb(220, 196, 188)  
}
```

If you want to add a text shadow in that color use the text-shadow property, you can generate a text shadow directly with our [CSS Text Shadow Generator](#).

Here you see how black text with a 4 pixel rgb(220, 196, 188) colored shadow looks like.

```
.shadow{ text-shadow: 4px 4px 2px rgb(220, 196, 188) }
```

Border

The CSS property to change the border of an element to XYZ 58.3322, 58.3263, 55.7606 is called "border". The border property can be set on classes, ids or directly on the HTML element.

This example shows the color as border, it can be applied via the CSS property "border" or "border-color".

```
.border, #border, table{ border:4px solid rgb(220, 196, 188) }
```


If only the border color should be changed use the property border-color.

```
.border{ border-color:rgb(220, 196, 188) }
```

If you want to add a box shadow in that color use:

Here you see how a box with a 4 pixel rgb(220, 196, 188) colored shadow looks like.

```
.boxshadow{ -moz-box-shadow:4px 4px 4px  
4px rgb(220, 196, 188); -webkit-box-  
shadow:4px 4px 4px 4px rgb(220, 196, 188);  
box-shadow:4px 4px 4px 4px rgb(220, 196,  
188) }
```

Background

The CSS property to change the background color of an element to XYZ 58.3322, 58.3263, 55.7606 is called "background". The background property can be set on classes, ids or directly on the HTML element.

```
.background, #background, body{  
background: rgb(220, 196, 188) }
```

If only the background color should be changed can be used:

```
.background{ background-color: rgb(220,  
196, 188) }
```

This example shows the color as background, it is applied via the CSS property "background".

To optimize and compress your CSS code, you can use our [online CSS compressor and optimizer](#) based on csstidy. If you want to create a linear or radial gradient as background or border, check our [CSS Gradient Generator](#).

Hey! You found this booklet interesting? Support Converting Colors with the new Membership Option!

The pro membership hides all ads, plus gives you double the colors in the color bucket, and more awesome pro features!

[Learn more, Memberships starting at \\$2.50/m!](#)

**Follow me
on Twitter!**

@ConvertingColor