

Converting Colors

XYZ(58.3662, 58.3576, 60.6232)

Have a look what the booklet for
XYZ(58.3662, 58.3576, 60.6232)
contains.

XYZ(58.3190, 58.2171, 60.3878)	3
<i>Conversions</i>	4
<i>Details</i>	6
<i>Harmonies</i>	12
<i>Previews</i>	24
<i>Color Blindness Simulation</i>	28
<i>CSS Examples</i>	31

Color

**XYZ(58.3190, 58.2171,
60.3878)**

Conversions

Conversions Part 1

Format	Color
Hex	D9C4C4
RGB	217, 196, 196
RGB Percent	85%, 77%, 77%
CMY	0.1490, 0.2314, 0.2314
CMYK	0.00, 0.10, 0.10, 0.15
HSL	0°, 22%, 81%
HSV	0°, 10%, 85%
XYZ	58.3190, 58.2171, 60.3878
YIQ	202.2790, 12.5160, 4.4520

Conversions

Conversions Part 2

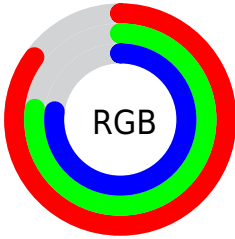
Format	Color
R _Y B	217, 196, 196
Decimal	14271684
CIE Lab	80.86, 7.38, 2.68
CIE LCh	81, 7.848, 19.950
Yxy	58.2171, 0.3296, 0.3291
Android (android.graphics.Color)	4292461764 (0xFFD9C4C4)
YUV	202.2790, -3.0955, 12.9103
Hunter-Lab	76.3001, 2.9089, 6.4850

Details

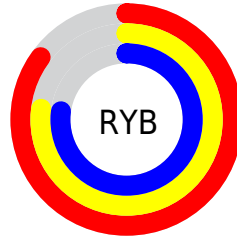
The XYZ color **58.3190, 58.2171, 60.3878** is a light color, and the websafe version is hex **CCCCCC**. A complement of this color would be **60.1019, 66.3699, 75.2893**, and the grayscale version is **56.3278, 59.2612, 64.5355**.

A 20% lighter version of the original color is **94.0949, 98.6024, 107.0013**, and **29.4558, 28.9804, 29.6325** is the 20% darker color. If you saturate the color by 10%, you get **51.4808, 48.2113, 46.7909**, and if you desaturate by 10%, it is **66.2254, 69.7862, 76.1046**.

Distribution



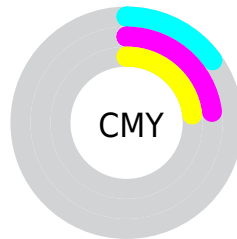
- Red (85%)
- Green (77%)
- Blue (77%)



- Red (85%)
- Yellow (77%)
- Blue (77%)



- Cyan (0%)
- Magenta (10%)
- Yellow (10%)
- Black (15%)



- Cyan (15%)
- Magenta (23%)
- Yellow (23%)

Brightness & Saturation Gradients

These gradients show how the XYZ color 58.3190, 58.2171, 60.3878 changes by changing the brightness by 10 percent. The first figure shows a shift by +10% for each color and the second figure -10%.

Similar to the brightness gradients but the following saturation gradients show a change of the XYZ color 58.3190, 58.2171, 60.3878 by changing the saturation by 10% instead.

■ 58.3190, 58.2171,
60.3878

■ 58.3190, 58.2171,
60.3878

408.3083,
417.9944, 443.8700

■ 42.3094, 41.9832,
43.3039

□ 101.5075,
102.2389, 106.9409

■ 29.5358, 29.0881,
29.7905

129.4172,
130.7957, 137.2472

■ 19.6328, 19.1475,
19.4289

162.0243,
164.2288, 172.7981

■ 12.2351, 11.7769,
11.8007

199.6942,
202.9228, 214.0121

■ 6.9774, 6.5920,
6.4872

242.7921,
247.2619, 261.3077

■ 3.4942, 3.2083,
3.0700

291.6836,

■ 1.4202, 1.2414,

297.6306, 315.1036

1.1305

346.7338,
354.4133, 375.8181

■ 0.2705, 0.0951,
0.0000

■ 0.0000, 0.0000,
0.0000

■ 58.3190, 58.2171,
60.3878

■ 58.3190, 58.2171,
60.3878

■ 51.4808, 48.2113,
46.7909

■ 66.2254, 69.7862,
76.1046

■ 45.6604, 39.6946,
35.2198

■ 75.2379, 82.9736,
94.0228

■ 40.8108, 32.5982,
25.5787

■ 82.4256, 93.4919,
108.3092

■ 36.8790, 26.8448,
17.7626

■ 33.8073, 22.3499,
11.6566

■ 31.5313, 19.0193,
7.1327

■ 29.9777, 16.7457,
4.0451

■ 29.0596, 15.4020,
2.2207

■ 28.6274, 14.7695,
1.3621

Harmonies

Analogous

The Analogous color harmony consists of three colors that are next to each other on the color wheel.



58.4635, 58.2171, 64.9608



58.3190, 58.2171, 60.3878



57.3659, 58.2171, 56.7905

Triad

The Triadic color harmony groups three colors that are evenly spaced from another and form a triangle on the color wheel.



58.3190, 58.2171, 60.3878



52.9791, 58.2171, 57.8102



54.7909, 58.2171, 72.6019

Complementary

The Complementary color scheme is a pair of colors which are on the opposite of each other on the color wheel.



58.3190, 58.2171, 60.3878



60.1019, 66.3699, 75.2893

Split Complementary

Split-complementary colors differ from the complementary color scheme. The scheme consists of three colors, the original color and two neighbors of the complement color.



53.3499, 58.2171, 70.4787



58.3190, 58.2171, 60.3878



52.3175, 58.2171, 61.8418

Square

The Square scheme is like the rectangle color scheme, but the four colors are evenly spaced on the color wheel.



58.3190, 58.2171, 60.3878



54.2757, 58.2171, 55.3535



52.4519, 58.2171, 66.4870



56.4052, 58.2171, 72.1657

Rectangle

The Rectangle color scheme consists of four colors that form a rectangle on the color wheel.



58.3190, 58.2171, 60.3878



56.4103, 58.2171, 55.3584



52.4519, 58.2171, 66.4870



54.2707, 58.2171, 72.1600

Sweetspot

The Sweet Spot groups the original color and five complimentary colors.



58.3206, 58.2197, 60.3890



91.4509, 94.7337, 101.7446



60.8803, 59.2421, 73.8724



19.3736, 19.9833, 21.3786



0.0000, 0.0000, 0.0000



20.3446, 21.4041, 23.3091

Same Dimension

The Same Dimension uses a secret algorithm to generate beautiful new colors.



58.3206, 58.2197, 60.3890



81.5137, 80.1932, 81.9884



60.7717, 63.1217, 61.2061



13.0563, 13.0519, 13.5567



17.3225, 8.9306, 0.8108



1.1223, 0.5787, 0.0525

Inverse Universe

The Inverse Universe completely reimagines the original color for something new.



60.1019, 66.3699, 75.2893



84.6728, 94.6476, 108.4138



57.4820, 61.1300, 74.4160



13.4447, 14.8292, 16.8058



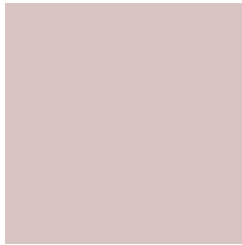
22.5958, 33.0610, 44.9289



1.4639, 2.1420, 2.9107

Previews

White Background



This preview shows how the XYZ color 58.3190, 58.2171, 60.3878 looks on a white background.

Color Contrast Check

Large Text (above 18pt) WCAG AA × Fail

Any Text WCAG AA × Fail

Large Text (above 18pt) WCAG AAA × Fail

Any Text WCAG AAA × Fail

Black Background



This preview shows how the XYZ color 58.3190, 58.2171, 60.3878 looks on a black background.

Color Contrast Check

Large Text (above 18pt) WCAG AA ✓ Pass

Any Text WCAG AA ✓ Pass

Large Text (above 18pt) WCAG AAA ✓ Pass

Any Text WCAG AAA ✓ Pass

If you want to check with other color combinations, try the [Color Contrast Checker](#).

XYZ 58.3190, 58.2171, 60.3878

Background



This preview shows how black text looks on a background with the XYZ color 58.3190, 58.2171, 60.3878.



This preview shows how white text looks on a background with the XYZ color 58.3190, 58.2171,

Color Blindness Simulation

Color vision deficiency is a very complex topic, and I could not describe the different causes any better than Wikipedia does, so if you want to learn more, you should check out their [article about color blindness](#).

Dichromacy



Original Color

58.3190, 58.2171, 60.3878

Protanopia

56.0242, 58.3649, 61.7388

Deuteranopia

59.3798, 58.0987, 60.3091



Tritanopia

60.0138, 58.2471, 68.4013

Trichromacy



Original Color

58.3190, 58.2171, 60.3878

Protanomaly

56.7960, 58.4334, 61.1086

Deuteranomaly

58.9941, 58.2314, 60.3550

Tritanomaly

59.3276, 58.2953, 65.2520

Monochromacy



Original Color

58.3190, 58.2171, 60.3878

Achromatopsia

56.1383, 59.0619, 64.3184

Achromatomaly

56.8117, 58.7441, 62.9880

CSS Examples

Text

The CSS property to change the color of the text to XYZ 58.3190, 58.2171, 60.3878 is called "color". The color property can be set on classes, ids or directly on the HTML element.

This example shows how text in the color rgb(217, 196, 196) looks like.

```
.text, #text, p{  
    color:rgb(217, 196, 196)  
}
```

If you want to add a text shadow in that color use the text-shadow property, you can generate a text shadow directly with our [CSS Text Shadow Generator](#).

Here you see how black text with a 4 pixel rgb(217, 196, 196) colored shadow looks like.

```
.shadow{ text-shadow: 4px 4px 2px rgb(217, 196, 196) }
```

Border

The CSS property to change the border of an element to XYZ 58.3190, 58.2171, 60.3878 is called "border". The border property can be set on classes, ids or directly on the HTML element.

This example shows the color as border, it can be applied via the CSS property "border" or "border-color".

```
.border, #border, table{ border:4px solid rgb(217, 196, 196) }
```


If only the border color should be changed use the property border-color.

```
.border{ border-color:rgb(217, 196, 196) }
```

If you want to add a box shadow in that color use:

Here you see how a box with a 4 pixel rgb(217, 196, 196) colored shadow looks like.

```
.boxshadow{ -moz-box-shadow:4px 4px 4px  
4px rgb(217, 196, 196); -webkit-box-  
shadow:4px 4px 4px 4px rgb(217, 196, 196);  
box-shadow:4px 4px 4px 4px rgb(217, 196,  
196) }
```

Background

The CSS property to change the background color of an element to XYZ 58.3190, 58.2171, 60.3878 is called "background". The background property can be set on classes, ids or directly on the HTML element.

```
.background, #background, body{  
background: rgb(217, 196, 196) }
```

If only the background color should be changed can be used:

```
.background{ background-color: rgb(217,  
196, 196) }
```

This example shows the color as background, it is applied via the CSS property "background".

To optimize and compress your CSS code, you can use our [online CSS compressor and optimizer](#) based on csstidy. If you want to create a linear or radial gradient as background or border, check our [CSS Gradient Generator](#).

Hey! You found this booklet interesting? Support Converting Colors with the new Membership Option!

The pro membership hides all ads, plus gives you double the colors in the color bucket, and more awesome pro features!

[Learn more, Memberships starting at \\$2.50/m!](#)

**Follow me
on Twitter!**

@ConvertingColor