

Converting Colors

XYZ(58.3784, 58.9644, 57.0196)

Have a look what the booklet for
XYZ(58.3784, 58.9644, 57.0196)
contains.

XYZ(58.4018, 59.0113, 57.0274)	3
<i>Conversions</i>	4
<i>Details</i>	6
<i>Harmonies</i>	12
<i>Previews</i>	24
<i>Color Blindness Simulation</i>	28
<i>CSS Examples</i>	31

Color

**XYZ(58.4018, 59.0113,
57.0274)**

Conversions

Conversions Part 1

Format	Color
Hex	DAC6BE
RGB	218, 198, 190
RGB Percent	85%, 78%, 75%
CMY	0.1451, 0.2235, 0.2549
CMYK	0.00, 0.09, 0.13, 0.15
HSL	17°, 27%, 80%
HSV	17°, 13%, 85%
XYZ	58.4018, 59.0113, 57.0274
YIQ	203.0680, 14.4880, 1.7520

Conversions

Conversions Part 2

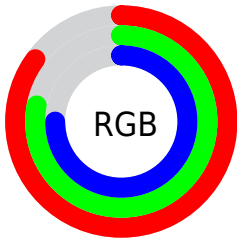
Format	Color
R _Y B	218, 201, 190
Decimal	14337726
CIE Lab	81.30, 5.69, 6.54
CIE LCh	81, 8.668, 48.985
Yxy	59.0113, 0.3348, 0.3383
Android (android.graphics.Color)	4292527806 (0xFFDAC6BE)
YUV	203.0680, -6.4425, 13.0954
Hunter-Lab	76.8188, 1.2724, 9.7585

Details

The XYZ color **58.4018, 59.0113, 57.0274** is a light color, and the websafe version is hex **CCCCCC**. A complement of this color would be **56.9364, 62.1011, 75.3161**, and the grayscale version is **56.8416, 59.8018, 65.1242**.

A 20% lighter version of the original color is **93.6346, 99.4338, 101.4464**, and **29.5929, 29.5392, 27.8088** is the 20% darker color. If you saturate the color by 10%, you get **52.8179, 51.3754, 44.2768**, and if you desaturate by 10%, it is **64.7112, 67.5266, 71.7795**.

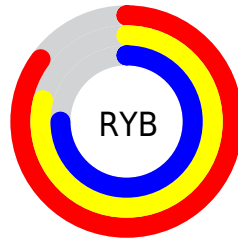
Distribution



Red (85%)

Green (78%)

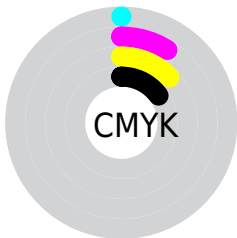
Blue (75%)



Red (85%)

Yellow (79%)

Blue (75%)

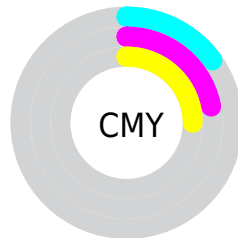


Cyan (0%)

Magenta (9%)

Yellow (13%)

Black (15%)



Cyan (15%)


Magenta (22%)


Yellow (25%)

Brightness & Saturation Gradients


These gradients show how the XYZ color 58.4018, 59.0113, 57.0274 changes by changing the brightness by 10 percent. The first figure shows a shift by +10% for each color and the second figure -10%.


Similar to the brightness gradients but the following saturation gradients show a change of the XYZ color 58.4018, 59.0113, 57.0274 by changing the saturation by 10% instead.


 58.4018, 59.0113,
57.0274

 58.4018, 59.0113,
57.0274


408.6112,
420.9438, 431.0486

 42.3763, 42.6222,
40.6177


 101.6273,
103.3941, 102.0059

 29.5884, 29.5888,
27.7031


129.5581,
132.1566, 131.4118

 19.6729, 19.5267,
17.8649

162.1879,
165.8123, 165.9869

 12.2644, 12.0515,
10.6846

199.8822,
204.7457, 206.1497

 6.9975, 6.7787,
5.7437

243.0064,
249.3412, 252.3187

 3.5068, 3.3241,
2.6236

291.9257,

 1.4271, 1.3032,

299.9831, 304.9125

0.9046

347.0055,
357.0558, 364.3496

■ 0.2754, 0.1437,
0.0000

■ 0.0000, 0.0000,
0.0000

■ 58.4018, 59.0113,
57.0274

■ 58.4018, 59.0113,
57.0274

■ 52.8179, 51.3754,
44.2768

■ 64.7112, 67.5266,
71.7795

■ 47.9279, 44.5827,
33.4373

■ 71.7664, 76.9405,
88.6107

■ 43.7049, 38.6060,
24.4169

■ 79.5286, 87.2553,
107.2581

■ 40.1183, 33.4137,
17.1147

■ 82.7237, 93.6456,
108.3231

■ 37.1351, 28.9719,
11.4197

■ 34.7188, 25.2443,
7.2078

■ 32.8286, 22.1909,
4.3365

■ 31.4170, 19.7673,
2.6343

■ 30.6536, 18.3854,
1.9331

Harmonies

Analogous

The Analogous color harmony consists of three colors that are next to each other on the color wheel.



59.4417, 59.0113, 61.0673



58.4018, 59.0113, 57.0274



56.7556, 59.0113, 54.9644

Triad

The Triadic color harmony groups three colors that are evenly spaced from another and form a triangle on the color wheel.



58.4018, 59.0113, 57.0274



52.7437, 59.0113, 62.3691



57.2275, 59.0113, 74.1389

Complementary

The Complementary color scheme is a pair of colors which are on the opposite of each other on the color wheel.



58.4018, 59.0113, 57.0274



56.9364, 62.1011, 75.3161

Split Complementary

Split-complementary colors differ from the complementary color scheme. The scheme consists of three colors, the original color and two neighbors of the complement color.



55.4266, 59.0113, 74.5338



58.4018, 59.0113, 57.0274



52.8638, 59.0113, 67.5482

Square

The Square scheme is like the rectangle color scheme, but the four colors are evenly spaced on the color wheel.



58.4018, 59.0113, 57.0274



53.5051, 59.0113, 57.9362



53.8370, 59.0113, 72.0651



58.7536, 59.0113, 71.0136

Rectangle

The Rectangle color scheme consists of four colors that form a rectangle on the color wheel.



58.4018, 59.0113, 57.0274



55.5471, 59.0113, 54.9092



53.8370, 59.0113, 72.0651



56.6334, 59.0113, 74.6014

Sweetspot

The Sweet Spot groups the original color and five complimentary colors.



58.4034, 59.0139, 57.0287



91.1710, 94.8005, 99.7193



58.9688, 56.3896, 68.7933



19.3623, 20.0869, 20.9860



0.0000, 0.0000, 0.0000



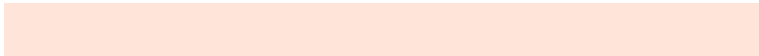
20.3446, 21.4041, 23.3091

Same Dimension

The Same Dimension uses a secret algorithm to generate beautiful new colors.



58.4034, 59.0139, 57.0287



81.3884, 81.5699, 76.9302



61.7352, 65.6775, 58.1392



13.3577, 13.6547, 13.6572



18.4444, 11.1743, 1.1847



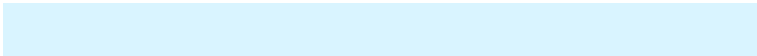
1.2677, 0.8695, 0.1010

Inverse Universe

The Inverse Universe completely reimagines the original color for something new.



56.9364, 62.1011, 75.3161



78.9615, 86.6745, 107.1759



53.6458, 55.5199, 74.2193



13.1140, 14.1678, 16.6956



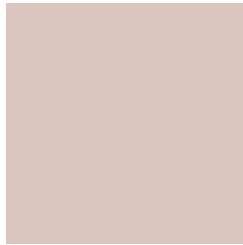
14.7683, 17.4060, 42.3197



1.0289, 1.2720, 2.7657

Previews

White Background



This preview shows how the XYZ color 58.4018, 59.0113, 57.0274 looks on a white background.

Color Contrast Check

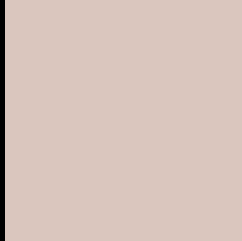
Large Text (above 18pt) WCAG AA × Fail

Any Text WCAG AA × Fail

Large Text (above 18pt) WCAG AAA × Fail

Any Text WCAG AAA × Fail

Black Background



This preview shows how the XYZ color 58.4018, 59.0113, 57.0274 looks on a black background.

Color Contrast Check

Large Text (above 18pt) WCAG AA ✓ Pass

Any Text WCAG AA ✓ Pass

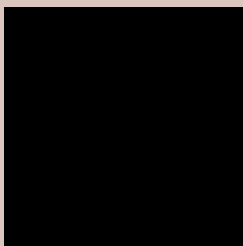
Large Text (above 18pt) WCAG AAA ✓ Pass

Any Text WCAG AAA ✓ Pass

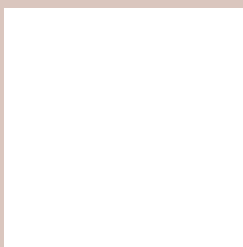
If you want to check with other color combinations, try the [Color Contrast Checker](#).

XYZ 58.4018, 59.0113, 57.0274

Background



This preview shows how black text looks on a background with the XYZ color 58.4018, 59.0113, 57.0274.



This preview shows how white text looks on a background with the XYZ color 58.4018, 59.0113,

Color Blindness Simulation

Color vision deficiency is a very complex topic, and I could not describe the different causes any better than Wikipedia does, so if you want to learn more, you should check out their [article about color blindness](#).

Dichromacy



Original Color

58.4018, 59.0113, 57.0274

Protanopia

56.4135, 58.9890, 58.2819

Deuteranopia

60.2831, 58.9606, 57.4935



Tritanopia

60.9668, 59.0555, 69.1583

Trichromacy



Original Color

58.4018, 59.0113, 57.0274

Protanomaly

57.2096, 59.0672, 57.6761

Deuteranomaly

59.5753, 58.9294, 57.5248

Tritanomaly

60.0346, 59.0073, 64.7253

Monochromacy



Original Color

58.4018, 59.0113, 57.0274

Achromatopsia

56.7640, 59.7202, 65.0353

Achromatomaly

57.0921, 59.2604, 61.8554

CSS Examples

Text

The CSS property to change the color of the text to XYZ 58.4018, 59.0113, 57.0274 is called "color". The color property can be set on classes, ids or directly on the HTML element.

This example shows how text in the color rgb(218, 198, 190) looks like.

```
.text, #text, p{  
    color:rgb(218, 198, 190)  
}
```

If you want to add a text shadow in that color use the text-shadow property, you can generate a text shadow directly with our [CSS Text Shadow Generator](#).

Here you see how black text with a 4 pixel rgb(218, 198, 190) colored shadow looks like.

```
.shadow{ text-shadow: 4px 4px 2px rgb(218, 198, 190) }
```

Border

The CSS property to change the border of an element to XYZ 58.4018, 59.0113, 57.0274 is called "border". The border property can be set on classes, ids or directly on the HTML element.

This example shows the color as border, it can be applied via the CSS property "border" or "border-color".

```
.border, #border, table{ border:4px solid rgb(218, 198, 190) }
```


If only the border color should be changed use the property `border-color`.

```
.border{ border-color:rgb(218, 198, 190) }
```

If you want to add a box shadow in that color use:

Here you see how a box with a 4 pixel `rgb(218, 198, 190)` colored shadow looks like.

```
.boxshadow{ -moz-box-shadow:4px 4px 4px  
4px rgb(218, 198, 190); -webkit-box-  
shadow:4px 4px 4px 4px rgb(218, 198, 190);  
box-shadow:4px 4px 4px 4px rgb(218, 198,  
190) }
```

Background

The CSS property to change the background color of an element to XYZ 58.4018, 59.0113, 57.0274 is called "background". The background property can be set on classes, ids or directly on the HTML element.

```
.background, #background, body{  
background: rgb(218, 198, 190) }
```

If only the background color should be changed can be used:

```
.background{ background-color: rgb(218,  
198, 190) }
```

This example shows the color as background, it is applied via the CSS property "background".

To optimize and compress your CSS code, you can use our [online CSS compressor and optimizer](#) based on csstidy. If you want to create a linear or radial gradient as background or border, check our [CSS Gradient Generator](#).

Hey! You found this booklet interesting? Support Converting Colors with the new Membership Option!

The pro membership hides all ads, plus gives you double the colors in the color bucket, and more awesome pro features!

[Learn more, Memberships starting at \\$2.50/m!](#)

**Follow me
on Twitter!**

@ConvertingColor