

Converting Colors

XYZ(58.3983, 57.5662, 61.4596)

Have a look what the booklet for
XYZ(58.3983, 57.5662, 61.4596)
contains.

XYZ(58.3983, 57.5662, 61.4596)	3
<i>Conversions</i>	4
<i>Details</i>	6
<i>Harmonies</i>	12
<i>Previews</i>	24
<i>Color Blindness Simulation</i>	28
<i>CSS Examples</i>	31

Color

**XYZ(58.3983, 57.5662,
61.4596)**

Conversions

Conversions Part 1

Format	Color
Hex	DAC2C6
RGB	218, 194, 198
RGB Percent	85%, 76%, 78%
CMY	0.1451, 0.2392, 0.2235
CMYK	0.00, 0.11, 0.09, 0.15
HSL	350°, 24%, 81%
HSV	350°, 11%, 85%
XYZ	58.3983, 57.5662, 61.4596
YIQ	201.6320, 13.0200, 6.3320

Conversions

Conversions Part 2

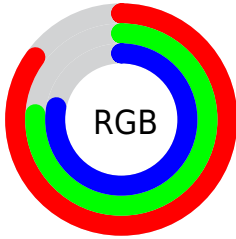
Format	Color
R _Y B	218, 194, 198
Decimal	14336710
CIE Lab	80.50, 9.13, 1.09
CIE LCh	80, 9.196, 6.787
Yxy	57.5662, 0.3291, 0.3245
Android (android.graphics.Color)	4292526790 (0xFFDAC2C6)
YUV	201.6320, -1.7906, 14.3547
Hunter-Lab	75.8724, 4.6132, 5.0835

Details

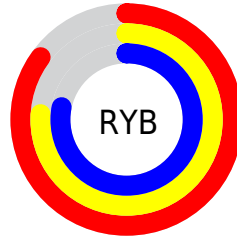
The XYZ color **58.3983, 57.5662, 61.4596** is a light color, and the websafe version is hex **CCCCCC**. A complement of this color would be **59.4594, 66.4687, 73.3174**, and the grayscale version is **55.9162, 58.8282, 64.0640**.

A 20% lighter version of the original color is **93.7872, 97.4744, 108.4791**, and **29.5164, 28.5563, 30.3418** is the 20% darker color. If you saturate the color by 10%, you get **51.9265, 47.7772, 49.5754**, and if you desaturate by 10%, it is **65.8366, 68.8843, 74.9077**.

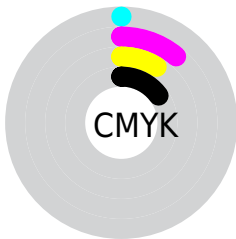
Distribution



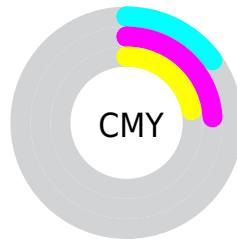
- Red (85%)
- Green (76%)
- Blue (78%)



- Red (85%)
- Yellow (76%)
- Blue (78%)



- Cyan (0%)
- Magenta (11%)
- Yellow (9%)
- Black (15%)



- Cyan (15%)
- Magenta (24%)
- Yellow (22%)

Brightness & Saturation Gradients

These gradients show how the XYZ color 58.3983, 57.5662, 61.4596 changes by changing the brightness by 10 percent. The first figure shows a shift by +10% for each color and the second figure -10%.

Similar to the brightness gradients but the following saturation gradients show a change of the XYZ color 58.3983, 57.5662, 61.4596 by changing the saturation by 10% instead.

■ 58.3983, 57.5662,
61.4596

■ 58.3983, 57.5662,
61.4596

408.5984,
415.5676, 447.9103

■ 42.3734, 41.4600,
44.1632

□ 101.6223,
101.2909, 108.5081

■ 29.5862, 28.6787,
30.4607

129.5521,
129.6781, 139.0974

■ 19.6712, 18.8379,
19.9335

162.1810,
162.9279, 174.9546

■ 12.2632, 11.5532,
12.1631

199.8743,
201.4245, 216.4984

■ 6.9966, 6.4402,
6.7310

242.9973,
245.5524, 264.1474

■ 3.5063, 3.1146,
3.2186

291.9154,

■ 1.4268, 1.1918,

295.6959, 318.3200

1.2073

346.9940,
352.2395, 379.4348

■ 0.2752, 0.0550,
0.0000

■ 0.0000, 0.0000,
0.0000

■ 58.3983, 57.5662,
61.4596

■ 58.3983, 57.5662,
61.4596

■ 51.9265, 47.7772,
49.5754

■ 65.8366, 68.8843,
74.9077

■ 46.3765, 39.4444,
39.1945

■ 74.2738, 81.7852,
89.9701

■ 41.7074, 32.5003,
30.2578

■ 82.3254, 93.4863,
106.2254

■ 37.8735, 26.8693,
22.7007

■ 82.7238, 93.6456,
108.3231

■ 34.8246, 22.4681,
16.4537

■ 32.5052, 19.2043,
11.4414

■ 30.8522, 16.9721,
7.5800

■ 29.7915, 15.6458,
4.7753

■ 29.2369, 15.0349,
3.0547

Harmonies

Analogous

The Analogous color harmony consists of three colors that are next to each other on the color wheel.



58.1185, 57.5662, 66.8663



58.3983, 57.5662, 61.4596



57.6731, 57.5662, 56.6596

Triad

The Triadic color harmony groups three colors that are evenly spaced from another and form a triangle on the color wheel.



58.3983, 57.5662, 61.4596



52.5704, 57.5662, 54.7190



53.2969, 57.5662, 72.7253

Complementary

The Complementary color scheme is a pair of colors which are on the opposite of each other on the color wheel.



58.3983, 57.5662, 61.4596



59.4594, 66.4687, 73.3174

Split Complementary

Split-complementary colors differ from the complementary color scheme. The scheme consists of three colors, the original color and two neighbors of the complement color.



51.8597, 57.5662, 69.1121



58.3983, 57.5662, 61.4596



51.4470, 57.5662, 58.6718

Square

The Square scheme is like the rectangle color scheme, but the four colors are evenly spaced on the color wheel.



58.3983, 57.5662, 61.4596



54.2872, 57.5662, 52.9153



51.1898, 57.5662, 63.9161



55.1449, 57.5662, 73.5772

Rectangle

The Rectangle color scheme consists of four colors that form a rectangle on the color wheel.



58.3983, 57.5662, 61.4596



56.7270, 57.5662, 54.3802



51.1898, 57.5662, 63.9161



52.7511, 57.5662, 71.7836

Sweetspot

The Sweet Spot groups the original color and five complimentary colors.



58.3999, 57.5687, 61.4608



91.6482, 94.8119, 102.7855



59.6800, 57.9443, 74.3693



19.4266, 20.0043, 21.6582



0.0000, 0.0000, 0.0000



20.3446, 21.4041, 23.3091

Same Dimension

The Same Dimension uses a secret algorithm to generate beautiful new colors.



58.3999, 57.5687, 61.4608



81.2378, 78.9895, 83.9065



59.7734, 61.0437, 59.6742



13.1441, 13.0867, 14.0199



17.5424, 9.0180, 1.9706



1.1641, 0.5953, 0.2731

Inverse Universe

The Inverse Universe completely reimagines the original color for something new.



58.3999, 57.5687, 61.4608



81.2378, 78.9895, 83.9065



57.9517, 62.6264, 75.3642



13.1441, 13.0867, 14.0199



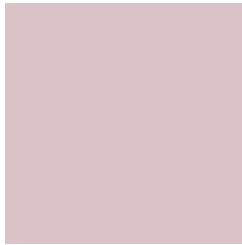
17.5424, 9.0180, 1.9706



1.1641, 0.5953, 0.2731

Previews

White Background



This preview shows how the XYZ color 58.3983, 57.5662, 61.4596 looks on a white background.

Color Contrast Check

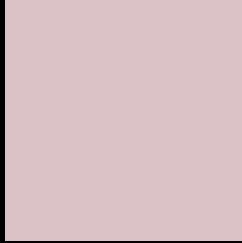
Large Text (above 18pt) WCAG AA × Fail

Any Text WCAG AA × Fail

Large Text (above 18pt) WCAG AAA × Fail

Any Text WCAG AAA × Fail

Black Background



This preview shows how the XYZ color 58.3983, 57.5662, 61.4596 looks on a black background.

Color Contrast Check

Large Text (above 18pt) WCAG AA ✓ Pass

Any Text WCAG AA ✓ Pass

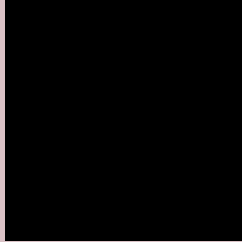
Large Text (above 18pt) WCAG AAA ✓ Pass

Any Text WCAG AAA ✓ Pass

If you want to check with other color combinations, try the [Color Contrast Checker](#).

XYZ 58.3983, 57.5662, 61.4596

Background



This preview shows how black text looks on a background with the XYZ color 58.3983, 57.5662, 61.4596.



This preview shows how white text looks on a background with the XYZ color 58.3983, 57.5662,

61.4596.

Color Blindness Simulation

Color vision deficiency is a very complex topic, and I could not describe the different causes any better than Wikipedia does, so if you want to learn more, you should check out their [article about color blindness](#).

Dichromacy



Original Color

58.3983, 57.5662, 61.4596

Protanopia

55.5946, 57.7604, 63.4771

Deuteranopia

58.7782, 57.4328, 61.4138



Tritanopia

59.6685, 57.7541, 67.6773

Trichromacy



Original Color

58.3983, 57.5662, 61.4596

Protanomaly

56.4040, 57.5125, 62.7718

Deuteranomaly

58.4764, 57.2772, 61.3996

Tritanomaly

59.1825, 57.5596, 65.1176

Monochromacy



Original Color

58.3983, 57.5662, 61.4596

Achromatopsia

56.1383, 59.0619, 64.3184

Achromatomaly

56.9785, 58.4738, 63.5418

CSS Examples

Text

The CSS property to change the color of the text to XYZ 58.3983, 57.5662, 61.4596 is called "color". The color property can be set on classes, ids or directly on the HTML element.

This example shows how text in the color `rgb(218, 194, 198)` looks like.

```
.text, #text, p{  
    color:rgb(218, 194, 198)  
}
```

If you want to add a text shadow in that color use the text-shadow property, you can generate a text shadow directly with our [CSS Text Shadow Generator](#).

Here you see how black text with a 4 pixel rgb(218, 194, 198) colored shadow looks like.

```
.shadow{ text-shadow: 4px 4px 2px rgb(218, 194, 198) }
```

Border

The CSS property to change the border of an element to XYZ 58.3983, 57.5662, 61.4596 is called "border". The border property can be set on classes, ids or directly on the HTML element.

This example shows the color as border, it can be applied via the CSS property "border" or "border-color".

```
.border, #border, table{ border:4px solid rgb(218, 194, 198) }
```


If only the border color should be changed use the property `border-color`.

```
.border{ border-color:rgb(218, 194, 198) }
```

If you want to add a box shadow in that color use:

Here you see how a box with a 4 pixel `rgb(218, 194, 198)` colored shadow looks like.

```
.boxshadow{ -moz-box-shadow:4px 4px 4px  
4px rgb(218, 194, 198); -webkit-box-  
shadow:4px 4px 4px 4px rgb(218, 194, 198);  
box-shadow:4px 4px 4px 4px rgb(218, 194,  
198) }
```

Background

The CSS property to change the background color of an element to XYZ 58.3983, 57.5662, 61.4596 is called "background". The background property can be set on classes, ids or directly on the HTML element.

```
.background, #background, body{  
background: rgb(218, 194, 198) }
```

If only the background color should be changed can be used:

```
.background{ background-color: rgb(218,  
194, 198) }
```

This example shows the color as background, it is applied via the CSS property "background".

To optimize and compress your CSS code, you can use our [online CSS compressor and optimizer](#) based on csstidy. If you want to create a linear or radial gradient as background or border, check our [CSS Gradient Generator](#).

Hey! You found this booklet interesting? Support Converting Colors with the new Membership Option!

The pro membership hides all ads, plus gives you double the colors in the color bucket, and more awesome pro features!

[Learn more, Memberships starting at \\$2.50/m!](#)

**Follow me
on Twitter!**

@ConvertingColor