

Converting Colors

XYZ(58.5641, 57.2445, 50.0821)

Have a look what the booklet for
XYZ(58.5641, 57.2445, 50.0821)
contains.

XYZ(58.5641, 57.2445, 50.0821)	3
<i>Conversions</i>	4
<i>Details</i>	6
<i>Harmonies</i>	12
<i>Previews</i>	24
<i>Color Blindness Simulation</i>	28
<i>CSS Examples</i>	31

Color

**XYZ(58.5641, 57.2445,
50.0821)**

Conversions

Conversions Part 1

Format	Color
Hex	E3C0B2
RGB	227, 192, 178
RGB Percent	89%, 75%, 70%
CMY	0.1098, 0.2470, 0.3020
CMYK	0.00, 0.15, 0.22, 0.11
HSL	17°, 47%, 79%
HSV	17°, 22%, 89%
XYZ	58.5641, 57.2445, 50.0821
YIQ	200.8690, 25.3540, 3.0660

Conversions

Conversions Part 2

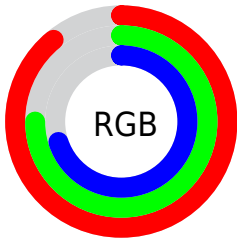
Format	Color
R _Y B	227, 198, 178
Decimal	14926002
CIE Lab	80.32, 10.31, 11.68
CIE LCh	80, 15.578, 48.564
Yxy	57.2445, 0.3530, 0.3451
Android (android.graphics.Color)	4293116082 (0xFFE3C0B2)
YUV	200.8690, -11.2744, 22.9169
Hunter-Lab	75.6601, 5.7614, 13.7159

Details

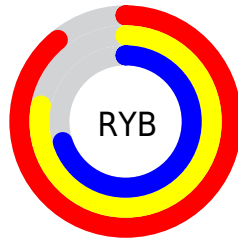
The XYZ color **58.5641, 57.2445, 50.0821** is a light color, and the websafe version is hex **FFCCCC**. A complement of this color would be **56.0191, 62.5980, 81.8037**, and the grayscale version is **55.4941, 58.3841, 63.5803**.

A 20% lighter version of the original color is **89.6587, 94.3353, 91.3249**, and **29.7289, 28.6038, 23.3562** is the 20% darker color. If you saturate the color by 10%, you get **53.1053, 49.6773, 37.9329**, and if you desaturate by 10%, it is **64.7953, 65.7521, 64.3508**.

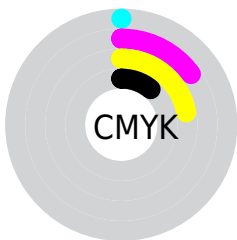
Distribution



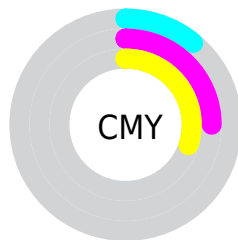
- Red (89%)
- Green (75%)
- Blue (70%)



- Red (89%)
- Yellow (78%)
- Blue (70%)



- Cyan (0%)
- Magenta (15%)
- Yellow (22%)
- Black (11%)





- Cyan (11%)
- Magenta (25%)
- Yellow (30%)

Brightness & Saturation Gradients


These gradients show how the XYZ color 58.5641, 57.2445, 50.0821 changes by changing the brightness by 10 percent. The first figure shows a shift by +10% for each color and the second figure -10%.


Similar to the brightness gradients but the following saturation gradients show a change of the XYZ color 58.5641, 57.2445, 50.0821 by changing the saturation by 10% instead.


 58.5641, 57.2445,
50.0821

 58.5641, 57.2445,
50.0821


409.2047,
414.3649, 403.7312

 42.5073, 41.2016,
35.1070


 101.8621,
100.8219, 91.6941

 29.6916, 28.4766,
23.4611


129.8341,
129.1251, 119.1680

 19.7515, 18.6853,
14.7259


162.5085,
162.2839, 151.6453

 12.3218, 11.4431,
8.4827

200.2507,
200.6826, 189.5445

 7.0370, 6.3657,
4.3132

243.4261,
244.7056, 233.2842

 3.5318, 3.0687,
1.7987

292.4000,

 1.4408, 1.1677,

294.7374, 283.2828

0.4271

347.5377,
351.1624, 339.9590

■ 0.2850, 0.0351,
0.0000

■ 0.0000, 0.0000,
0.0000

■ 58.5641, 57.2445,
50.0821

■ 58.5641, 57.2445,
50.0821

■ 53.1053, 49.6773,
37.9329

■ 64.7953, 65.7521,
64.3508

■ 48.3832, 43.0100,
27.7978

■ 71.8237, 75.2233,
80.8303

■ 44.3657, 37.2104,
19.5677

■ 79.6785, 85.6903,
99.6110

■ 41.0168, 32.2415,
13.1214

■ 85.4888, 95.0710,
108.4525

■ 38.2968, 28.0635,
8.3239

■ 36.1612, 24.6328,
5.0206

■ 34.5586, 21.9012,
3.0265

■ 33.5620, 20.0975,
2.1103

Harmonies

Analogous

The Analogous color harmony consists of three colors that are next to each other on the color wheel.



60.4244, 57.2445, 56.9102



58.5641, 57.2445, 50.0821



55.6327, 57.2445, 46.6688

Triad

The Triadic color harmony groups three colors that are evenly spaced from another and form a triangle on the color wheel.



58.5641, 57.2445, 50.0821



48.6239, 57.2445, 58.9157



56.3825, 57.2445, 80.4809

Complementary

The Complementary color scheme is a pair of colors which are on the opposite of each other on the color wheel.



58.5641, 57.2445, 50.0821



56.0191, 62.5980, 81.8037

Split Complementary

Split-complementary colors differ from the complementary color scheme. The scheme consists of three colors, the original color and two neighbors of the complement color.



53.2037, 57.2445, 81.1520



58.5641, 57.2445, 50.0821



48.8070, 57.2445, 68.0824

Square

The Square scheme is like the rectangle color scheme, but the four colors are evenly spaced on the color wheel.



58.5641, 57.2445, 50.0821



49.9453, 57.2445, 51.4266



50.4556, 57.2445, 76.4267



59.1314, 57.2445, 74.6739

Rectangle

The Rectangle color scheme consists of four colors that form a rectangle on the color wheel.



58.5641, 57.2445, 50.0821



53.5022, 57.2445, 46.5430



50.4556, 57.2445, 76.4267



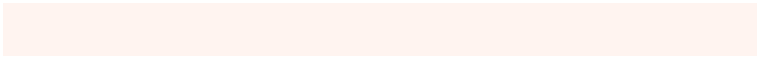
55.3263, 57.2445, 81.3342

Sweetspot

The Sweet Spot groups the original color and five complimentary colors.



58.5656, 57.2471, 50.0833



89.2962, 92.2786, 95.3097



59.6246, 52.9824, 70.1131



18.9840, 19.5776, 20.0975



0.0000, 0.0000, 0.0000



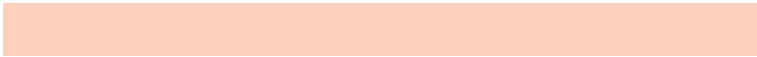
20.3446, 21.4041, 23.3091

Same Dimension

The Same Dimension uses a secret algorithm to generate beautiful new colors.



58.5656, 57.2471, 50.0833



72.8631, 69.8617, 57.6179



64.3692, 68.8542, 52.0178



14.7108, 15.0355, 15.0312



19.6595, 11.8932, 1.2595



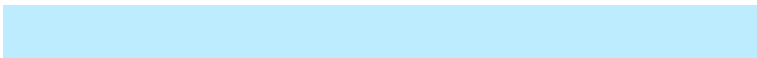
1.5301, 1.0336, 0.1189

Inverse Universe

The Inverse Universe completely reimagines the original color for something new.



56.0191, 62.5980, 81.8037



68.9722, 78.0210, 106.0321



50.3412, 51.2423, 79.9110



14.4412, 15.6037, 18.3950



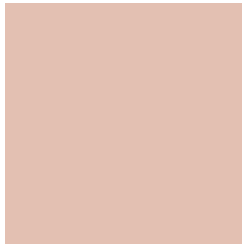
15.7383, 18.5387, 45.1320



1.2413, 1.5266, 3.3612

Previews

White Background



This preview shows how the XYZ color 58.5641, 57.2445, 50.0821 looks on a white background.

Color Contrast Check

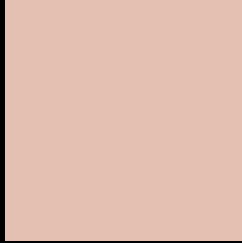
Large Text (above 18pt) WCAG AA × Fail

Any Text WCAG AA × Fail

Large Text (above 18pt) WCAG AAA × Fail

Any Text WCAG AAA × Fail

Black Background



This preview shows how the XYZ color 58.5641, 57.2445, 50.0821 looks on a black background.

Color Contrast Check

Large Text (above 18pt) WCAG AA ✓ Pass

Any Text WCAG AA ✓ Pass

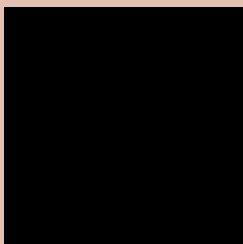
Large Text (above 18pt) WCAG AAA ✓ Pass

Any Text WCAG AAA ✓ Pass

If you want to check with other color combinations, try the [Color Contrast Checker](#).

XYZ 58.5641, 57.2445, 50.0821

Background



This preview shows how black text looks on a background with the XYZ color 58.5641, 57.2445, 50.0821.



This preview shows how white text looks on a background with the XYZ color 58.5641, 57.2445,

Color Blindness Simulation

Color vision deficiency is a very complex topic, and I could not describe the different causes any better than Wikipedia does, so if you want to learn more, you should check out their [article about color blindness](#).

Dichromacy



Original Color

58.5641, 57.2445, 50.0821

Protanopia

54.5990, 57.4896, 52.4749

Deuteranopia

58.5641, 57.2445, 50.0821



Tritanopia

61.3958, 57.1012, 64.2856

Trichromacy



Original Color

58.5641, 57.2445, 50.0821

Protanomaly

55.8120, 57.1122, 51.7982

Deuteranomaly

58.5641, 57.2445, 50.0821

Tritanomaly

60.2483, 56.9482, 58.8556

Monochromacy



Original Color

58.5641, 57.2445, 50.0821

Achromatopsia

55.5167, 58.4078, 63.6061

Achromatomaly

56.3981, 57.9401, 58.6631

CSS Examples

Text

The CSS property to change the color of the text to XYZ 58.5641, 57.2445, 50.0821 is called "color". The color property can be set on classes, ids or directly on the HTML element.

This example shows how text in the color `rgb(227, 192, 178)` looks like.

```
.text, #text, p{  
    color:rgb(227, 192, 178)  
}
```

If you want to add a text shadow in that color use the text-shadow property, you can generate a text shadow directly with our [CSS Text Shadow Generator](#).

Here you see how black text with a 4 pixel rgb(227, 192, 178) colored shadow looks like.

```
.shadow{ text-shadow: 4px 4px 2px rgb(227, 192, 178) }
```

Border

The CSS property to change the border of an element to XYZ 58.5641, 57.2445, 50.0821 is called "border". The border property can be set on classes, ids or directly on the HTML element.

This example shows the color as border, it can be applied via the CSS property "border" or "border-color".

```
.border, #border, table{ border:4px solid rgb(227, 192, 178) }
```


If only the border color should be changed use the property `border-color`.

```
.border{ border-color:rgb(227, 192, 178) }
```

If you want to add a box shadow in that color use:

Here you see how a box with a 4 pixel `rgb(227, 192, 178)` colored shadow looks like.

```
.boxshadow{ -moz-box-shadow:4px 4px 4px  
4px rgb(227, 192, 178); -webkit-box-  
shadow:4px 4px 4px 4px rgb(227, 192, 178);  
box-shadow:4px 4px 4px 4px rgb(227, 192,  
178) }
```

Background

The CSS property to change the background color of an element to XYZ 58.5641, 57.2445, 50.0821 is called "background". The background property can be set on classes, ids or directly on the HTML element.

```
.background, #background, body{  
background: rgb(227, 192, 178) }
```

If only the background color should be changed can be used:

```
.background{ background-color: rgb(227,  
192, 178) }
```

This example shows the color as background, it is applied via the CSS property "background".

To optimize and compress your CSS code, you can use our [online CSS compressor and optimizer](#) based on csstidy. If you want to create a linear or radial gradient as background or border, check our [CSS Gradient Generator](#).

Hey! You found this booklet interesting? Support Converting Colors with the new Membership Option!

The pro membership hides all ads, plus gives you double the colors in the color bucket, and more awesome pro features!

[Learn more, Memberships starting at \\$2.50/m!](#)

**Follow me
on Twitter!**

@ConvertingColor