

Converting Colors

XYZ(58.6664, 58.7680, 62.1789)

Have a look what the booklet for
XYZ(58.6664, 58.7680, 62.1789)
contains.

XYZ(58.5940, 58.6550, 62.2661)	3
<i>Conversions</i>	4
<i>Details</i>	6
<i>Harmonies</i>	12
<i>Previews</i>	24
<i>Color Blindness Simulation</i>	28
<i>CSS Examples</i>	31

Color

**XYZ(58.5940, 58.6550,
62.2661)**

Conversions

Conversions Part 1

Format	Color
Hex	D8C5C7
RGB	216, 197, 199
RGB Percent	85%, 77%, 78%
CMY	0.1529, 0.2274, 0.2196
CMYK	0.00, 0.09, 0.08, 0.15
HSL	354°, 20%, 81%
HSV	354°, 9%, 85%
XYZ	58.5940, 58.6550, 62.2661
YIQ	202.9090, 10.6820, 4.6500

Conversions

Conversions Part 2

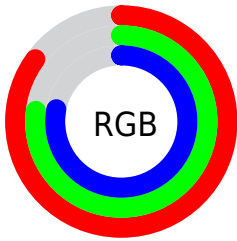
Format	Color
R _Y B	216, 197, 199
Decimal	14206407
CIE Lab	81.10, 7.00, 1.41
CIE LCh	81, 7.140, 11.383
Yxy	58.6550, 0.3264, 0.3267
Android (android.graphics.Color)	4292396487 (0xFFD8C5C7)
YUV	202.9090, -1.9271, 11.4808
Hunter-Lab	76.5866, 2.5384, 5.4069

Details

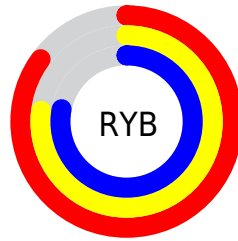
The XYZ color **58.5940, 58.6550, 62.2661** is a light color, and the websafe version is hex **CCCCCC**. A complement of this color would be **59.7217, 65.8387, 73.1822**, and the grayscale version is **56.7161, 59.6697, 64.9803**.

A 20% lighter version of the original color is **94.7318, 99.3636, 108.7939**, and **29.6312, 29.2663, 30.8753** is the 20% darker color. If you saturate the color by 10%, you get **51.9329, 48.6989, 49.6671**, and if you desaturate by 10%, it is **66.2463, 70.1358, 76.6035**.

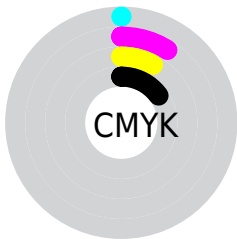
Distribution



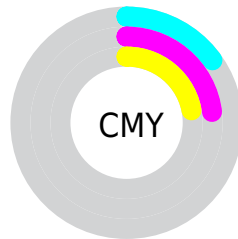
- Red (85%)
- Green (77%)
- Blue (78%)



- Red (85%)
- Yellow (77%)
- Blue (78%)



- Cyan (0%)
- Magenta (9%)
- Yellow (8%)
- Black (15%)



- Cyan (15%)
- Magenta (23%)
- Yellow (22%)

Brightness & Saturation Gradients

These gradients show how the XYZ color 58.5940, 58.6550, 62.2661 changes by changing the brightness by 10 percent. The first figure shows a shift by +10% for each color and the second figure -10%.

Similar to the brightness gradients but the following saturation gradients show a change of the XYZ color 58.5940, 58.6550, 62.2661 by changing the saturation by 10% instead.

■ 58.5940, 58.6550,
62.2661

■ 58.5940, 58.6550,
62.2661

409.3140,
419.6222, 450.9355

■ 42.5315, 42.3355,
44.8106

101.9054,
102.8761, 109.6854

■ 29.7106, 29.3641,
30.9664

129.8849,
131.5464, 140.4862

■ 19.7660, 19.3564,
20.3150

162.5675,
165.1024, 176.5725

■ 12.3323, 11.9281,
12.4379

200.3186,
203.9286, 218.3628

■ 7.0442, 6.6947,
6.9165

243.5034,
248.4092, 266.2758

■ 3.5364, 3.2719,
3.3323

292.4873,

■ 1.4433, 1.2753,

298.9288, 320.7298

1.2667

347.6357,
355.8717, 382.1436

■ 0.2868, 0.1220,
0.0343

■ 0.0000, 0.0000,
0.0000

■ 58.5940, 58.6550,
62.2661

■ 58.5940, 58.6550,
62.2661

■ 51.9329, 48.6989,
49.6671

■ 66.2463, 70.1358,
76.6035

■ 46.2177, 40.1960,
38.7368

■ 74.9229, 83.1935,
92.7380

■ 41.4068, 33.0807,
29.4061

■ 82.1292, 93.3391,
108.2953

■ 37.4537, 27.2791,
21.5999

■ 34.3077, 22.7109,
15.2368

■ 31.9126, 19.2865,
10.2281

■ 30.2052, 16.9045,
6.4751

■ 29.1115, 15.4454,
3.8652

■ 28.5233, 14.7259,
2.2603

Harmonies

Analogous

The Analogous color harmony consists of three colors that are next to each other on the color wheel.



58.4977, 58.6550, 66.5097



58.5940, 58.6550, 62.2661



57.9182, 58.6550, 58.6141

Triad

The Triadic color harmony groups three colors that are evenly spaced from another and form a triangle on the color wheel.



58.5940, 58.6550, 62.2661



53.8848, 58.6550, 57.9283



54.8439, 58.6550, 71.9265

Complementary

The Complementary color scheme is a pair of colors which are on the opposite of each other on the color wheel.



58.5940, 58.6550, 62.2661



59.7217, 65.8387, 73.1822

Split Complementary

Split-complementary colors differ from the complementary color scheme. The scheme consists of three colors, the original color and two neighbors of the complement color.



53.6363, 58.6550, 69.4212



58.5940, 58.6550, 62.2661



53.0893, 58.6550, 61.2920

Square

The Square scheme is like the rectangle color scheme, but the four colors are evenly spaced on the color wheel.



58.5940, 58.6550, 62.2661



55.1886, 58.6550, 56.1848



52.9992, 58.6550, 65.4917



56.3148, 58.6550, 72.2157

Rectangle

The Rectangle color scheme consists of four colors that form a rectangle on the color wheel.



58.5940, 58.6550, 62.2661



57.1276, 58.6550, 56.9572



52.9992, 58.6550, 65.4917



54.3944, 58.6550, 71.3105

Sweetspot

The Sweet Spot groups the original color and five complimentary colors.



58.5956, 58.6576, 62.2674



91.5751, 94.7827, 102.4005



60.0311, 59.1566, 73.2209



19.4069, 19.9965, 21.5547



0.0000, 0.0000, 0.0000



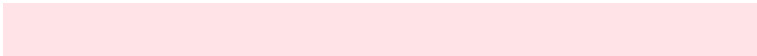
20.3446, 21.4041, 23.3091

Same Dimension

The Same Dimension uses a secret algorithm to generate beautiful new colors.



58.5956, 58.6576, 62.2674



82.9639, 81.8782, 86.2189



60.0590, 61.9529, 61.6191



12.4758, 12.4418, 13.1796



16.8707, 8.6846, 1.3574



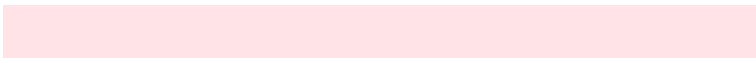
1.0360, 0.5312, 0.1787

Inverse Universe

The Inverse Universe completely reimagines the original color for something new.



58.5956, 58.6576, 62.2674



82.9639, 81.8782, 86.2189



58.1538, 62.2923, 73.9251



12.4758, 12.4418, 13.1796



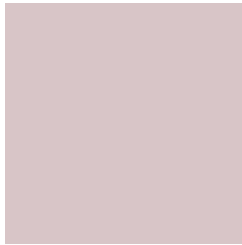
16.8707, 8.6846, 1.3574



1.0360, 0.5312, 0.1787

Previews

White Background



This preview shows how the XYZ color 58.5940, 58.6550, 62.2661 looks on a white background.

Color Contrast Check

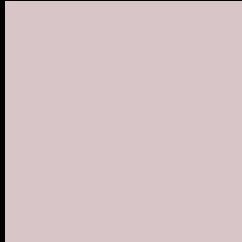
Large Text (above 18pt) WCAG AA × Fail

Any Text WCAG AA × Fail

Large Text (above 18pt) WCAG AAA × Fail

Any Text WCAG AAA × Fail

Black Background



This preview shows how the XYZ color 58.5940, 58.6550, 62.2661 looks on a black background.

Color Contrast Check

Large Text (above 18pt) WCAG AA ✓ Pass

Any Text WCAG AA ✓ Pass

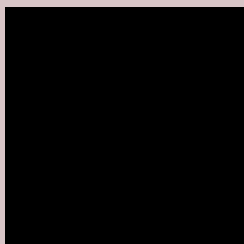
Large Text (above 18pt) WCAG AAA ✓ Pass

Any Text WCAG AAA ✓ Pass

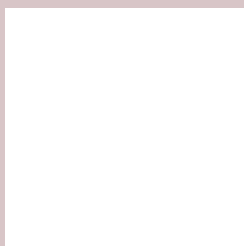
If you want to check with other color combinations, try the [Color Contrast Checker](#).

XYZ 58.5940, 58.6550, 62.2661

Background



This preview shows how black text looks on a background with the XYZ color 58.5940, 58.6550, 62.2661.



This preview shows how white text looks on a background with the XYZ color 58.5940, 58.6550,

Color Blindness Simulation

Color vision deficiency is a very complex topic, and I could not describe the different causes any better than Wikipedia does, so if you want to learn more, you should check out their [article about color blindness](#).

Dichromacy



Original Color

58.5940, 58.6550, 62.2661

Protanopia

56.6061, 58.9695, 63.6571

Deuteranopia

59.9481, 58.6833, 62.2002



Tritanopia

60.1864, 58.6388, 69.7743

Trichromacy



Original Color

58.5940, 58.6550, 62.2661

Protanomaly

57.3741, 59.0340, 63.0143

Deuteranomaly

59.5639, 58.8190, 62.2467

Tritanomaly

59.6177, 58.7366, 67.2266

Monochromacy



Original Color

58.5940, 58.6550, 62.2661

Achromatopsia

56.7640, 59.7202, 65.0353

Achromatomaly

57.5597, 59.4475, 64.3179

CSS Examples

Text

The CSS property to change the color of the text to XYZ 58.5940, 58.6550, 62.2661 is called "color". The color property can be set on classes, ids or directly on the HTML element.

This example shows how text in the color `rgb(216, 197, 199)` looks like.

```
.text, #text, p{  
    color:rgb(216, 197, 199)  
}
```

If you want to add a text shadow in that color use the text-shadow property, you can generate a text shadow directly with our [CSS Text Shadow Generator](#).

Here you see how black text with a 4 pixel rgb(216, 197, 199) colored shadow looks like.

```
.shadow{ text-shadow: 4px 4px 2px rgb(216, 197, 199) }
```

Border

The CSS property to change the border of an element to XYZ 58.5940, 58.6550, 62.2661 is called "border". The border property can be set on classes, ids or directly on the HTML element.

This example shows the color as border, it can be applied via the CSS property "border" or "border-color".

```
.border, #border, table{ border:4px solid rgb(216, 197, 199) }
```


If only the border color should be changed use the property `border-color`.

```
.border{ border-color:rgb(216, 197, 199) }
```

If you want to add a box shadow in that color use:

Here you see how a box with a 4 pixel `rgb(216, 197, 199)` colored shadow looks like.

```
.boxshadow{ -moz-box-shadow:4px 4px 4px  
4px rgb(216, 197, 199); -webkit-box-  
shadow:4px 4px 4px 4px rgb(216, 197, 199);  
box-shadow:4px 4px 4px 4px rgb(216, 197,  
199) }
```

Background

The CSS property to change the background color of an element to XYZ 58.5940, 58.6550, 62.2661 is called "background". The background property can be set on classes, ids or directly on the HTML element.

```
.background, #background, body{  
background: rgb(216, 197, 199) }
```

If only the background color should be changed can be used:

```
.background{ background-color: rgb(216,  
197, 199) }
```

This example shows the color as background, it is applied via the CSS property "background".

To optimize and compress your CSS code, you can use our [online CSS compressor and optimizer](#) based on csstidy. If you want to create a linear or radial gradient as background or border, check our [CSS Gradient Generator](#).

Hey! You found this booklet interesting? Support Converting Colors with the new Membership Option!

The pro membership hides all ads, plus gives you double the colors in the color bucket, and more awesome pro features!

[Learn more, Memberships starting at \\$2.50/m!](#)

**Follow me
on Twitter!**

@ConvertingColor