

Converting Colors

XYZ(58.6831, 57.2481, 59.9676)

Have a look what the booklet for
XYZ(58.6831, 57.2481, 59.9676)
contains.

XYZ(58.6322, 57.0569, 60.1474)	3
<i>Conversions</i>	4
<i>Details</i>	6
<i>Harmonies</i>	12
<i>Previews</i>	24
<i>Color Blindness Simulation</i>	28
<i>CSS Examples</i>	31

Color

**XYZ(58.6322, 57.0569,
60.1474)**

Conversions

Conversions Part 1

Format	Color
Hex	DDC0C4
RGB	221, 192, 196
RGB Percent	87%, 75%, 77%
CMY	0.1333, 0.2470, 0.2314
CMYK	0.00, 0.13, 0.11, 0.13
HSL	352°, 30%, 81%
HSV	352°, 13%, 87%
XYZ	58.6322, 57.0569, 60.1474
YIQ	201.1270, 16.0000, 7.3920

Conversions

Conversions Part 2

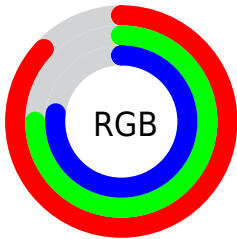
Format	Color
R_{YB}	221, 192, 196
Decimal	14532804
CIE _{Lab}	80.21, 10.93, 1.78
CIE _{LCh}	80, 11.072, 9.248
Yxy	57.0569, 0.3334, 0.3245
Android (android.graphics.Color)	4292722884 (0xFFDDC0C4)
YUV	201.1270, -2.5276, 17.4286
Hunter-Lab	75.5360, 6.3664, 5.6641

Details

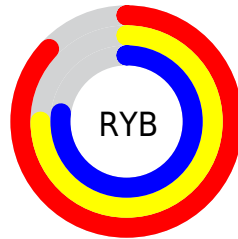
The XYZ color **58.6322, 57.0569, 60.1474** is a light color, and the websafe version is hex **FFCCCC**. A complement of this color would be **60.1212, 67.9305, 75.5920**, and the grayscale version is **55.6056, 58.5014, 63.7081**.

A 20% lighter version of the original color is **92.5370, 95.4867, 106.4820**, and **29.6968, 28.2369, 29.4763** is the 20% darker color. If you saturate the color by 10%, you get **52.1065, 47.2584, 47.9428**, and if you desaturate by 10%, it is **66.1652, 68.4279, 74.0481**.

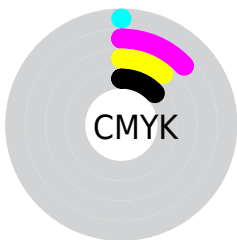
Distribution



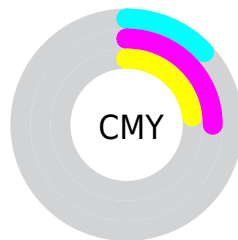
- Red (87%)
- Green (75%)
- Blue (77%)



- Red (87%)
- Yellow (75%)
- Blue (77%)



- Cyan (0%)
- Magenta (13%)
- Yellow (11%)
- Black (13%)



- Cyan (13%)
- Magenta (25%)
- Yellow (23%)

Brightness & Saturation Gradients

These gradients show how the XYZ color 58.6322, 57.0569, 60.1474 changes by changing the brightness by 10 percent. The first figure shows a shift by +10% for each color and the second figure -10%.

Similar to the brightness gradients but the following saturation gradients show a change of the XYZ color 58.6322, 57.0569, 60.1474 by changing the saturation by 10% instead.

■ 58.6322, 57.0569,
60.1474

■ 58.6322, 57.0569,
60.1474

409.4535,
413.6625, 442.9606

■ 42.5623, 41.0509,
43.1114

■ 101.9606,
100.5482, 106.5889

■ 29.7349, 28.3589,
29.6405

129.9499,
128.8023, 136.8315

■ 19.7845, 18.5964,
19.3161

162.6430,
161.9080, 172.3134

■ 12.3459, 11.3790,
11.7198

200.4053,
200.2495, 213.4530

■ 7.0536, 6.3224,
6.4330

243.6021,
244.2113, 260.6690

■ 3.5422, 3.0421,
3.0371

292.5989,

■ 1.4466, 1.1537,

294.1778, 314.3799

1.1136

347.7609,
350.5334, 375.0043

■ 0.2890, 0.0234,
0.0000

■ 0.0000, 0.0000,
0.0000

■ 58.6322, 57.0569,
60.1474

■ 58.6322, 57.0569,
60.1474

■ 52.1065, 47.2584,
47.9428

■ 66.1652, 68.4279,
74.0481

■ 46.5407, 38.9559,
37.3657

■ 74.7408, 81.4284,
89.7027

■ 41.8906, 32.0780,
28.3481

■ 83.3348, 93.9946,
106.8162

■ 38.1068, 26.5444,
20.8159

■ 83.6291, 94.1123,
108.3655

■ 35.1349, 22.2668,
14.6888

■ 32.9146, 19.1463,
9.8789

■ 31.3768, 17.0691,
6.2883

■ 30.4393, 15.8984,
3.8048

■ 30.0593, 15.4684,
2.6606

Harmonies

Analogous

The Analogous color harmony consists of three colors that are next to each other on the color wheel.



58.3951, 57.0569, 66.6383



58.6322, 57.0569, 60.1474



57.6648, 57.0569, 54.5823

Triad

The Triadic color harmony groups three colors that are evenly spaced from another and form a triangle on the color wheel.



58.6322, 57.0569, 60.1474



51.5288, 57.0569, 52.9807



52.7063, 57.0569, 74.4997

Complementary

The Complementary color scheme is a pair of colors which are on the opposite of each other on the color wheel.



58.6322, 57.0569, 60.1474



60.1212, 67.9305, 75.5920

Split Complementary

Split-complementary colors differ from the complementary color scheme. The scheme consists of three colors, the original color and two neighbors of the complement color.



50.9360, 57.0569, 70.3330



58.6322, 57.0569, 60.1474



50.2695, 57.0569, 57.8208

Square

The Square scheme is like the rectangle color scheme, but the four colors are evenly spaced on the color wheel.



58.6322, 57.0569, 60.1474



53.5358, 57.0569, 50.6378



50.0555, 57.0569, 64.1460



54.9319, 57.0569, 75.2306

Rectangle

The Rectangle color scheme consists of four colors that form a rectangle on the color wheel.



58.6322, 57.0569, 60.1474



56.4824, 57.0569, 52.0357



50.0555, 57.0569, 64.1460



52.0400, 57.0569, 73.4413

Sweetspot

The Sweet Spot groups the original color and five complimentary colors.



58.6338, 57.0594, 60.1486



90.4981, 93.1103, 100.5568



60.4138, 57.6204, 76.3449



19.1927, 19.6609, 21.1969



0.0000, 0.0000, 0.0000



20.3446, 21.4041, 23.3091

Same Dimension

The Same Dimension uses a secret algorithm to generate beautiful new colors.



58.6338, 57.0594, 60.1486



78.2321, 74.6124, 77.8657



60.4907, 61.4915, 58.5530



13.1288, 13.0806, 13.9393



17.4860, 8.9954, 1.6733



1.1569, 0.5924, 0.2350

Inverse Universe

The Inverse Universe completely reimagines the original color for something new.



58.6338, 57.0594, 60.1486



78.2321, 74.6124, 77.8657



58.0484, 62.9429, 77.4969



13.1288, 13.0806, 13.9393



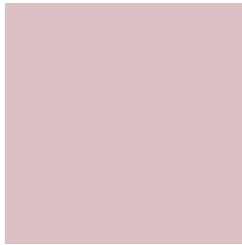
17.4860, 8.9954, 1.6733



1.1569, 0.5924, 0.2350

Previews

White Background



This preview shows how the XYZ color 58.6322, 57.0569, 60.1474 looks on a white background.

Color Contrast Check

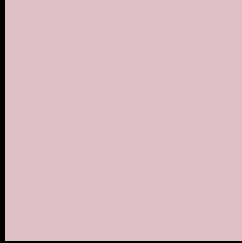
Large Text (above 18pt) WCAG AA × Fail

Any Text WCAG AA × Fail

Large Text (above 18pt) WCAG AAA × Fail

Any Text WCAG AAA × Fail

Black Background



This preview shows how the XYZ color 58.6322, 57.0569, 60.1474 looks on a black background.

Color Contrast Check

Large Text (above 18pt) WCAG AA ✓ Pass

Any Text WCAG AA ✓ Pass

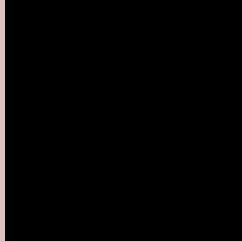
Large Text (above 18pt) WCAG AAA ✓ Pass

Any Text WCAG AAA ✓ Pass

If you want to check with other color combinations, try the [Color Contrast Checker](#).

XYZ 58.6322, 57.0569, 60.1474

Background



This preview shows how black text looks on a background with the XYZ color 58.6322, 57.0569, 60.1474.



This preview shows how white text looks on a background with the XYZ color 58.6322, 57.0569,

Color Blindness Simulation

Color vision deficiency is a very complex topic, and I could not describe the different causes any better than Wikipedia does, so if you want to learn more, you should check out their [article about color blindness](#).

Dichromacy



Original Color

58.6322, 57.0569, 60.1474

Protanopia

54.8600, 57.0682, 62.1567

Deuteranopia

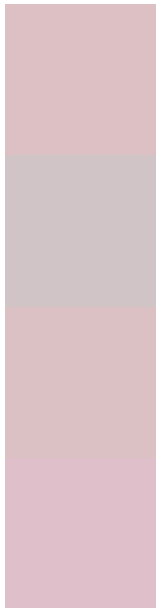
58.2472, 57.1855, 60.1925



Tritanopia

59.7744, 57.1990, 65.6477

Trichromacy



Original Color

58.6322, 57.0569, 60.1474

Protanomaly

56.2275, 57.1124, 61.4864

Deuteranomaly

58.5490, 57.3411, 60.2066

Tritanomaly

59.4157, 57.0555, 63.7584

Monochromacy



Original Color

58.6322, 57.0569, 60.1474

Achromatopsia

55.5167, 58.4078, 63.6061

Achromatomaly

56.5153, 57.9216, 62.2341

CSS Examples

Text

The CSS property to change the color of the text to XYZ 58.6322, 57.0569, 60.1474 is called "color". The color property can be set on classes, ids or directly on the HTML element.

This example shows how text in the color `rgb(221, 192, 196)` looks like.

```
.text, #text, p{  
    color:rgb(221, 192, 196)  
}
```

If you want to add a text shadow in that color use the text-shadow property, you can generate a text shadow directly with our [CSS Text Shadow Generator](#).

Here you see how black text with a 4 pixel rgb(221, 192, 196) colored shadow looks like.

```
.shadow{ text-shadow: 4px 4px 2px rgb(221, 192, 196) }
```

Border

The CSS property to change the border of an element to XYZ 58.6322, 57.0569, 60.1474 is called "border". The border property can be set on classes, ids or directly on the HTML element.

This example shows the color as border, it can be applied via the CSS property "border" or "border-color".

```
.border, #border, table{ border:4px solid rgb(221, 192, 196) }
```


If only the border color should be changed use the property `border-color`.

```
.border{ border-color:rgb(221, 192, 196) }
```

If you want to add a box shadow in that color use:

Here you see how a box with a 4 pixel `rgb(221, 192, 196)` colored shadow looks like.

```
.boxshadow{ -moz-box-shadow:4px 4px 4px  
4px rgb(221, 192, 196); -webkit-box-  
shadow:4px 4px 4px 4px rgb(221, 192, 196);  
box-shadow:4px 4px 4px 4px rgb(221, 192,  
196) }
```

Background

The CSS property to change the background color of an element to XYZ 58.6322, 57.0569, 60.1474 is called "background". The background property can be set on classes, ids or directly on the HTML element.

```
.background, #background, body{  
background: rgb(221, 192, 196) }
```

If only the background color should be changed can be used:

```
.background{ background-color: rgb(221,  
192, 196) }
```

This example shows the color as background, it is applied via the CSS property "background".

To optimize and compress your CSS code, you can use our [online CSS compressor and optimizer](#) based on csstidy. If you want to create a linear or radial gradient as background or border, check our [CSS Gradient Generator](#).

Hey! You found this booklet interesting? Support Converting Colors with the new Membership Option!

The pro membership hides all ads, plus gives you double the colors in the color bucket, and more awesome pro features!

[Learn more, Memberships starting at \\$2.50/m!](#)

**Follow me
on Twitter!**

@ConvertingColor