

# Converting Colors

XYZ(58.7223, 58.5994, 57.2719)

Have a look what the booklet for  
XYZ(58.7223, 58.5994, 57.2719)  
contains.

<b>XYZ(58.6591, 58.4571, 57.4819)</b> .....	3
<b><i>Conversions</i></b> .....	4
<b><i>Details</i></b> .....	6
<b><i>Harmonies</i></b> .....	12
<b><i>Previews</i></b> .....	24
<b><i>Color Blindness Simulation</i></b> .....	28
<b><i>CSS Examples</i></b> .....	31

# Color

**XYZ(58.6591, 58.4571,  
57.4819)**

# Conversions

## Conversions Part 1

<b>Format</b>	<b>Color</b>
Hex	DCC4BF
RGB	220, 196, 191
RGB Percent	86%, 77%, 75%
CMY	0.1373, 0.2314, 0.2510
CMYK	0.00, 0.11, 0.13, 0.14
HSL	10°, 29%, 81%
HSV	10°, 13%, 86%
XYZ	58.6591, 58.4571, 57.4819
YIQ	202.6060, 15.9090, 3.5330

# Conversions

## Conversions Part 2

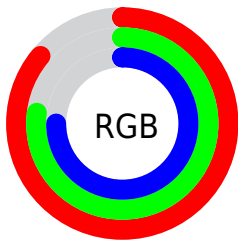
Format	Color
R <sub>Y</sub> B	220, 197, 191
Decimal	14468287
CIE Lab	80.99, 7.63, 5.59
CIE LCh	81, 9.455, 36.214
Yxy	58.4571, 0.3360, 0.3348
Android (android.graphics.Color)	4292658367 (0xFFDCC4BF)
YUV	202.6060, -5.7218, 15.2545
Hunter-Lab	76.4572, 3.1476, 8.9448

# Details

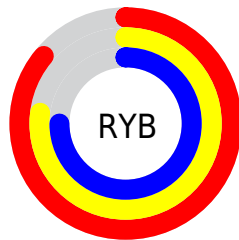
The XYZ color **58.6591, 58.4571, 57.4819** is a light color, and the websafe version is hex **CCCCCC**. A complement of this color would be **58.7042, 64.8432, 77.1327**, and the grayscale version is **56.5468, 59.4916, 64.7864**.

A 20% lighter version of the original color is **93.1538, 98.2260, 102.0455**, and **29.7775, 29.1803, 28.1077** is the 20% darker color. If you saturate the color by 10%, you get **52.5579, 49.8422, 44.3872**, and if you desaturate by 10%, it is **65.6254, 68.2191, 72.6606**.

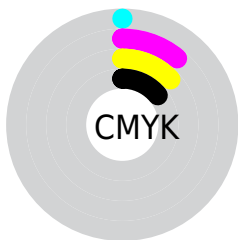
# Distribution



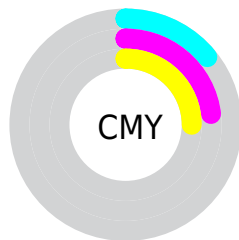
- Red (86%)
- Green (77%)
- Blue (75%)



- Red (86%)
- Yellow (77%)
- Blue (75%)



- Cyan (0%)
- Magenta (11%)
- Yellow (13%)
- Black (14%)




- Cyan (14%)
- Magenta (23%)
- Yellow (25%)


# Brightness & Saturation Gradients

These gradients show how the XYZ color 58.6591, 58.4571, 57.4819 changes by changing the brightness by 10 percent. The first figure shows a shift by +10% for each color and the second figure -10%.

Similar to the brightness gradients but the following saturation gradients show a change of the XYZ color 58.6591, 58.4571, 57.4819 by changing the saturation by 10% instead.

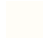



 58.6591, 58.4571,  
57.4819

 58.6591, 58.4571,  
57.4819


409.5518,  
418.8870, 432.7968

 42.5841, 42.1762,  
40.9803


 101.9995,  
102.5882, 102.6753

 29.7520, 29.2393,  
27.9841


129.9956,  
131.2072, 132.2042

 19.7976, 19.2619,  
18.0748


162.6961,  
164.7078, 166.9127

 12.3554, 11.8597,  
10.8337

200.4663,  
203.4742, 207.2192

 7.0601, 6.6482,  
5.8423

243.6716,  
247.8910, 253.5423

 3.5464, 3.2431,  
2.6822

292.6774,

 1.4489, 1.2599,

298.3425, 306.3006

0.9345

347.8490,  
355.2130, 365.9126

■ 0.2906, 0.1098,  
0.0000

■ 0.0000, 0.0000,  
0.0000

■ 58.6591, 58.4571,  
57.4819

■ 58.6591, 58.4571,  
57.4819

■ 52.5579, 49.8422,  
44.3872

■ 65.6254, 68.2191,  
72.6606

■ 47.2832, 42.3247,  
33.2817

■ 73.4841, 79.1601,  
90.0049

■ 42.8002, 35.8625,  
24.0688

■ 81.9431, 91.1911,  
107.8905

■ 39.0702, 30.4081,  
16.6424

■ 83.3254, 93.9558,  
108.3513

■ 36.0508, 25.9101,  
10.8859

■ 33.6955, 22.3127,  
6.6686

■ 31.9516, 19.5539,  
3.8406

■ 30.7583, 17.5636,  
2.2209

■ 30.2073, 16.5996,  
1.6119

# Harmonies

## Analogous

The Analogous color harmony consists of three colors that are next to each other on the color wheel.



59.3943, 58.4571, 62.4883



58.6591, 58.4571, 57.4819



57.0961, 58.4571, 54.2727

# Triad

The Triadic color harmony groups three colors that are evenly spaced from another and form a triangle on the color wheel.



58.6591, 58.4571, 57.4819



52.1830, 58.4571, 59.3940



55.9708, 58.4571, 74.9975

# Complementary

The Complementary color scheme is a pair of colors which are on the opposite of each other on the color wheel.



58.6591, 58.4571, 57.4819



58.7042, 64.8432, 77.1327

# Split Complementary

Split-complementary colors differ from the complementary color scheme. The scheme consists of three colors, the original color and two neighbors of the complement color.



54.0551, 58.4571, 74.0493



58.6591, 58.4571, 57.4819



51.8977, 58.4571, 64.8257

# Square

The Square scheme is like the rectangle color scheme, but the four colors are evenly spaced on the color wheel.



58.6591, 58.4571, 57.4819



53.3641, 58.4571, 55.3304



52.5753, 58.4571, 70.2439



57.8189, 58.4571, 72.7640



# Rectangle

The Rectangle color scheme consists of four colors that form a rectangle on the color wheel.



58.6591, 58.4571, 57.4819



55.8110, 58.4571, 53.4733



52.5753, 58.4571, 70.2439



55.3132, 58.4571, 75.0420

# Sweetspot

The Sweet Spot groups the original color and five complimentary colors.



58.6607, 58.4597, 57.4831



90.8173, 94.0931, 99.6014



60.4339, 57.3929, 72.2957



19.2731, 19.9085, 20.9563



0.0000, 0.0000, 0.0000



20.3446, 21.4041, 23.3091

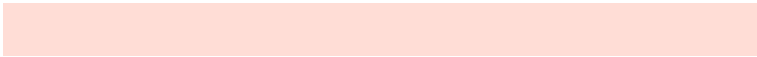


# Same Dimension

The Same Dimension uses a secret algorithm to generate beautiful new colors.



58.6607, 58.4597, 57.4831



79.3231, 77.9651, 74.6203



62.0488, 65.2359, 58.6125



13.2368, 13.4129, 13.6169



17.7844, 9.8544, 0.9648



1.2082, 0.7505, 0.0812



# Inverse Universe

The Inverse Universe completely reimagines the original color for something new.



58.7042, 64.8432, 77.1327



79.3950, 88.6564, 107.5356



55.2139, 57.8625, 75.9692



13.2438, 14.4273, 16.7389



17.4762, 22.8218, 43.2224

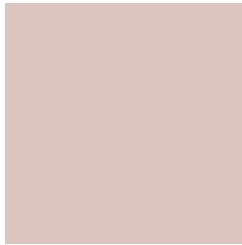


1.1836, 1.5814, 2.8173



# Previews

## White Background



This preview shows how the XYZ color 58.6591, 58.4571, 57.4819 looks on a white background.

## Color Contrast Check

Large Text (above 18pt) WCAG AA × Fail

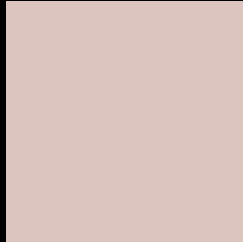
Any Text WCAG AA × Fail

Large Text (above 18pt) WCAG AAA × Fail

Any Text WCAG AAA × Fail



# Black Background



This preview shows how the XYZ color 58.6591, 58.4571, 57.4819 looks on a black background.

## Color Contrast Check

Large Text (above 18pt) WCAG AA ✓ Pass

Any Text WCAG AA ✓ Pass

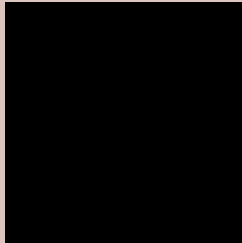
Large Text (above 18pt) WCAG AAA ✓ Pass

Any Text WCAG AAA ✓ Pass

If you want to check with other color combinations, try the [Color Contrast Checker](#).

**XYZ 58.6591, 58.4571, 57.4819**

## **Background**



This preview shows how black text looks on a background with the XYZ color 58.6591, 58.4571, 57.4819.



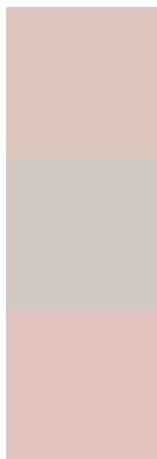
This preview shows how white text looks on a background with the XYZ color 58.6591, 58.4571,



# Color Blindness Simulation

Color vision deficiency is a very complex topic, and I could not describe the different causes any better than Wikipedia does, so if you want to learn more, you should check out their [article about color blindness](#).

## Dichromacy



### Original Color

58.6591, 58.4571, 57.4819

### Protanopia

56.0120, 58.4242, 58.7769

### Deuteranopia

59.4362, 58.1925, 57.3899



## Tritanopia

60.5793, 58.2236, 67.7199

# Trichromacy



## Original Color

58.6591, 58.4571, 57.4819

## Protanomaly

57.0892, 58.6497, 58.1808

## Deuteranomaly

59.3505, 58.4798, 57.4498

## Tritanomaly

59.7713, 58.2200, 63.9644

# Monochromacy



## Original Color

58.6591, 58.4571, 57.4819

## Achromatopsia

56.7640, 59.7202, 65.0353

## Achromatomaly

57.2576, 58.9874, 62.4007

# CSS Examples

## Text

The CSS property to change the color of the text to XYZ 58.6591, 58.4571, 57.4819 is called "color". The color property can be set on classes, ids or directly on the HTML element.

This example shows how text in the color rgb(220, 196, 191) looks like.

```
.text, #text, p{  
    color:rgb(220, 196, 191)  
}
```

If you want to add a text shadow in that color use the text-shadow property, you can generate a text shadow directly with our [CSS Text Shadow Generator](#).

Here you see how black text with a 4 pixel rgb(220, 196, 191) colored shadow looks like.

```
.shadow{ text-shadow: 4px 4px 2px rgb(220, 196, 191) }
```

## Border

The CSS property to change the border of an element to XYZ 58.6591, 58.4571, 57.4819 is called "border". The border property can be set on classes, ids or directly on the HTML element.

This example shows the color as border, it can be applied via the CSS property "border" or "border-color".

```
.border, #border, table{ border:4px solid rgb(220, 196, 191) }
```



If only the border color should be changed use the property `border-color`.

```
.border{ border-color:rgb(220, 196, 191) }
```

If you want to add a box shadow in that color use:

Here you see how a box with a 4 pixel `rgb(220, 196, 191)` colored shadow looks like.

```
.boxshadow{ -moz-box-shadow:4px 4px 4px  
4px rgb(220, 196, 191); -webkit-box-  
shadow:4px 4px 4px 4px rgb(220, 196, 191);  
box-shadow:4px 4px 4px 4px rgb(220, 196,  
191) }
```

# Background

The CSS property to change the background color of an element to XYZ 58.6591, 58.4571, 57.4819 is called "background". The background property can be set on classes, ids or directly on the HTML element.

```
.background, #background, body{  
background: rgb(220, 196, 191) }
```

If only the background color should be changed can be used:

```
.background{ background-color: rgb(220,  
196, 191) }
```

This example shows the color as background, it is applied via the CSS property "background".

To optimize and compress your CSS code, you can use our [online CSS compressor and optimizer](#) based on csstidy. If you want to create a linear or radial gradient as background or border, check our [CSS Gradient Generator](#).

Hey! You found this booklet interesting? Support Converting Colors with the new Membership Option!

The pro membership hides all ads, plus gives you double the colors in the color bucket, and more awesome pro features!

**[Learn more, Memberships starting at \\$2.50/m!](#)**

**Follow me  
on Twitter!**

@ConvertingColor