

# Converting Colors

XYZ(58.7240, 54.4393, 59.8464)

Have a look what the booklet for  
XYZ(58.7240, 54.4393, 59.8464)  
contains.

<b>XYZ(58.7828, 54.5974, 59.6647)</b> .....	3
<b><i>Conversions</i></b> .....	4
<b><i>Details</i></b> .....	6
<b><i>Harmonies</i></b> .....	12
<b><i>Previews</i></b> .....	24
<b><i>Color Blindness Simulation</i></b> .....	28
<b><i>CSS Examples</i></b> .....	31

# Color

**XYZ(58.7828, 54.5974,  
59.6647)**

# Conversions

## Conversions Part 1

<b>Format</b>	<b>Color</b>
Hex	E3B8C4
RGB	227, 184, 196
RGB Percent	89%, 72%, 77%
CMY	0.1098, 0.2784, 0.2314
CMYK	0.00, 0.19, 0.14, 0.11
HSL	343°, 43%, 81%
HSV	343°, 19%, 89%
XYZ	58.7828, 54.5974, 59.6647
YIQ	198.2250, 21.7760, 12.8480

# Conversions

## Conversions Part 2

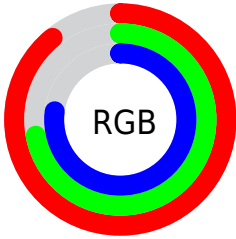
Format	Color
R <sub>Y</sub> B	227, 184, 196
Decimal	14923972
CIE Lab	78.81, 17.34, -0.20
CIE LCh	79, 17.340, 359.342
Yxy	54.5974, 0.3397, 0.3155
Android (android.graphics.Color)	4293114052 (0xFFE3B8C4)
YUV	198.2250, -1.0969, 25.2357
Hunter-Lab	73.8901, 12.6970, 3.8476

# Details

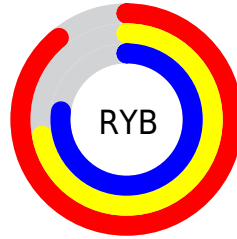
The XYZ color **58.7828, 54.5974, 59.6647** is a light color, and the websafe version is hex **FFCCCC**. A complement of this color would be **59.5041, 70.0361, 74.6754**, and the grayscale version is **53.8118, 56.6142, 61.6528**.

A 20% lighter version of the original color is **90.1297, 90.6720, 105.6796**, and **29.7934, 26.8435, 29.2022** is the 20% darker color. If you saturate the color by 10%, you get **52.6781, 45.2080, 48.9347**, and if you desaturate by 10%, it is **65.8505, 65.5862, 71.7197**.

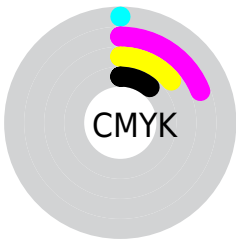
# Distribution



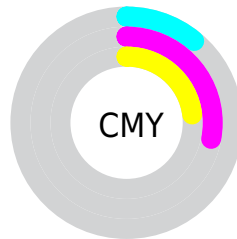
- Red (89%)
- Green (72%)
- Blue (77%)



- Red (89%)
- Yellow (72%)
- Blue (77%)



- Cyan (0%)
- Magenta (19%)
- Yellow (14%)
- Black (11%)



- Cyan (11%)
- Magenta (28%)
- Yellow (23%)

# Brightness & Saturation Gradients

These gradients show how the XYZ color 58.7828, 54.5974, 59.6647 changes by changing the brightness by 10 percent. The first figure shows a shift by +10% for each color and the second figure -10%.

Similar to the brightness gradients but the following saturation gradients show a change of the XYZ color 58.7828, 54.5974, 59.6647 by changing the saturation by 10% instead.



■ 58.7828, 54.5974,  
59.6647

■ 58.7828, 54.5974,  
59.6647

410.0035,  
404.3840, 441.1310

■ 42.6840, 39.0795,  
42.7249

■ 102.1784, 96.9508,  
105.8817

■ 29.8307, 26.8216,  
29.3395

130.2058,  
124.5551, 135.9960

■ 19.8575, 17.4393,  
19.0900

162.9402,  
156.9570, 171.3389

■ 12.3992, 10.5482,  
11.5579

200.7469,  
194.5409, 212.3289

■ 7.0903, 5.7639,  
6.3245

243.9912,  
237.6911, 259.3846

■ 3.5655, 2.7020,  
2.9714

293.0385,

■ 1.4594, 0.9782,

286.7921, 312.9245

1.0801

348.2542,  
342.2283, 373.3671

■ 0.2979, 0.0000,  
0.0000

■ 0.0000, 0.0000,  
0.0000

■ 58.7828, 54.5974,  
59.6647

■ 58.7828, 54.5974,  
59.6647

■ 52.6781, 45.2080,  
48.9347

■ 65.8505, 65.5862,  
71.7197

■ 47.4892, 37.3361,  
39.4799

■ 73.9163, 78.2367,  
85.1400

■ 43.1719, 30.9034,  
31.2526

■ 83.0193, 92.6170,  
99.9686

■ 39.6764, 25.8219,  
24.2006

■ 85.4888, 95.0710,  
108.4525

■ 36.9475, 21.9935,  
18.2675

■ 34.9230, 19.3071,  
13.3921

■ 33.5302, 17.6314,  
9.5062

■ 32.6610, 16.7656,  
6.5260

■ 32.5853, 16.6936,  
6.2564

# Harmonies

## Analogous

The Analogous color harmony consists of three colors that are next to each other on the color wheel.



57.7857, 54.5974, 69.6252



58.7828, 54.5974, 59.6647



57.8671, 54.5974, 50.6502

# Triad

The Triadic color harmony groups three colors that are evenly spaced from another and form a triangle on the color wheel.



58.7828, 54.5974, 59.6647



48.7230, 54.5974, 44.4338



48.5972, 54.5974, 77.2519

# Complementary

The Complementary color scheme is a pair of colors which are on the opposite of each other on the color wheel.



58.7828, 54.5974, 59.6647



59.5041, 70.0361, 74.6754

# Split Complementary

Split-complementary colors differ from the complementary color scheme. The scheme consists of three colors, the original color and two neighbors of the complement color.



46.3452, 54.5974, 69.2081



58.7828, 54.5974, 59.6647



46.4156, 54.5974, 50.3130

# Square

The Square scheme is like the rectangle color scheme, but the four colors are evenly spaced on the color wheel.



58.7828, 54.5974, 59.6647



51.9690, 54.5974, 42.4656



45.5641, 54.5974, 59.2304



51.8174, 54.5974, 80.4422



# Rectangle

The Rectangle color scheme consists of four colors that form a rectangle on the color wheel.



58.7828, 54.5974, 59.6647



56.3172, 54.5974, 46.2193



45.5641, 54.5974, 59.2304



47.7071, 54.5974, 74.9852

# Sweetspot

The Sweet Spot groups the original color and five complimentary colors.



58.7843, 54.5999, 59.6658



88.6362, 89.9334, 98.2503



58.9780, 54.2490, 80.0361



18.8286, 19.0253, 20.7900



0.0000, 0.0000, 0.0000



20.3446, 21.4041, 23.3091



# Same Dimension

The Same Dimension uses a secret algorithm to generate beautiful new colors.



58.7843, 54.5999, 59.6658



73.0329, 65.6875, 71.5900



59.4721, 58.0740, 53.4253



14.5414, 14.4338, 15.7855



19.0465, 9.7528, 3.8739



1.4461, 0.7361, 0.4895



# Inverse Universe

The Inverse Universe completely reimagines the original color for something new.



58.7843, 54.5999, 59.6658



73.0329, 65.6875, 71.5900



58.6235, 65.7167, 82.2683



14.5414, 14.4338, 15.7855



19.0465, 9.7528, 3.8739

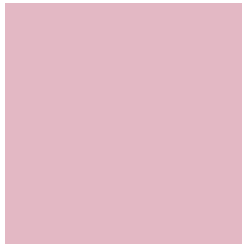


1.4461, 0.7361, 0.4895



# Previews

## White Background



This preview shows how the XYZ color 58.7828, 54.5974, 59.6647 looks on a white background.

## Color Contrast Check

Large Text (above 18pt) WCAG AA × Fail

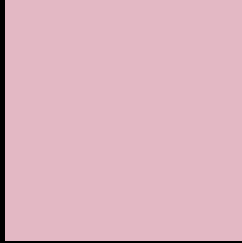
Any Text WCAG AA × Fail

Large Text (above 18pt) WCAG AAA × Fail

Any Text WCAG AAA × Fail



# Black Background



This preview shows how the XYZ color 58.7828, 54.5974, 59.6647 looks on a black background.

## Color Contrast Check

Large Text (above 18pt) WCAG AA ✓ Pass

Any Text WCAG AA ✓ Pass

Large Text (above 18pt) WCAG AAA ✓ Pass

Any Text WCAG AAA ✓ Pass

If you want to check with other color combinations, try the [Color Contrast Checker](#).

**XYZ 58.7828, 54.5974, 59.6647**

## **Background**



This preview shows how black text looks on a background with the XYZ color 58.7828, 54.5974, 59.6647.



This preview shows how white text looks on a background with the XYZ color 58.7828, 54.5974,



# Color Blindness Simulation

Color vision deficiency is a very complex topic, and I could not describe the different causes any better than Wikipedia does, so if you want to learn more, you should check out their [article about color blindness](#).

## Dichromacy



### Original Color

58.7828, 54.5974, 59.6647

### Protanopia

52.9784, 54.7182, 63.6465

### Deuteranopia

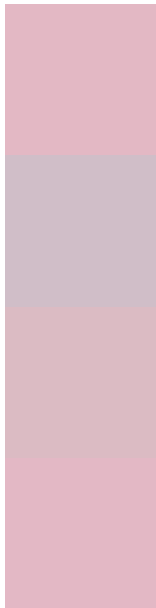
55.7795, 54.6315, 59.2348



## Tritanopia

59.0121, 54.6891, 60.8719

# Trichromacy



## Original Color

58.7828, 54.5974, 59.6647

## Protanomaly

54.8512, 54.4069, 62.2542

## Deuteranomaly

56.8341, 54.5408, 59.1617

## Tritanomaly

58.8971, 54.6431, 60.2663

# Monochromacy



## Original Color

58.7828, 54.5974, 59.6647

## Achromatopsia

53.6758, 56.4712, 61.4971

## Achromatomaly

55.4425, 55.7265, 60.6575

# CSS Examples

## Text

The CSS property to change the color of the text to XYZ 58.7828, 54.5974, 59.6647 is called "color". The color property can be set on classes, ids or directly on the HTML element.

This example shows how text in the color `rgb(227, 184, 196)` looks like.

```
.text, #text, p{  
    color:rgb(227, 184, 196)  
}
```

If you want to add a text shadow in that color use the text-shadow property, you can generate a text shadow directly with our [CSS Text Shadow Generator](#).

Here you see how black text with a 4 pixel rgb(227, 184, 196) colored shadow looks like.

```
.shadow{ text-shadow: 4px 4px 2px rgb(227, 184, 196) }
```

## Border

The CSS property to change the border of an element to XYZ 58.7828, 54.5974, 59.6647 is called "border". The border property can be set on classes, ids or directly on the HTML element.

This example shows the color as border, it can be applied via the CSS property "border" or "border-color".

```
.border, #border, table{ border:4px solid rgb(227, 184, 196) }
```



If only the border color should be changed use the property `border-color`.

```
.border{ border-color:rgb(227, 184, 196) }
```

If you want to add a box shadow in that color use:

Here you see how a box with a 4 pixel `rgb(227, 184, 196)` colored shadow looks like.

```
.boxshadow{ -moz-box-shadow:4px 4px 4px  
4px rgb(227, 184, 196); -webkit-box-  
shadow:4px 4px 4px 4px rgb(227, 184, 196);  
box-shadow:4px 4px 4px 4px rgb(227, 184,  
196) }
```

# Background

The CSS property to change the background color of an element to XYZ 58.7828, 54.5974, 59.6647 is called "background". The background property can be set on classes, ids or directly on the HTML element.

```
.background, #background, body{  
background: rgb(227, 184, 196) }
```

If only the background color should be changed can be used:

```
.background{ background-color: rgb(227,  
184, 196) }
```

This example shows the color as background, it is applied via the CSS property "background".

To optimize and compress your CSS code, you can use our [online CSS compressor and optimizer](#) based on csstidy. If you want to create a linear or radial gradient as background or border, check our [CSS Gradient Generator](#).

Hey! You found this booklet interesting? Support Converting Colors with the new Membership Option!

The pro membership hides all ads, plus gives you double the colors in the color bucket, and more awesome pro features!

**[Learn more, Memberships starting at \\$2.50/m!](#)**

**Follow me  
on Twitter!**

@ConvertingColor