

Converting Colors

XYZ(58.7249, 58.7781, 59.8600)

Have a look what the booklet for
XYZ(58.7249, 58.7781, 59.8600)
contains.

XYZ(58.7300, 58.7781, 59.8797)	3
<i>Conversions</i>	4
<i>Details</i>	6
<i>Harmonies</i>	12
<i>Previews</i>	24
<i>Color Blindness Simulation</i>	28
<i>CSS Examples</i>	31

Color

**XYZ(58.7300, 58.7781,
59.8797)**

Conversions

Conversions Part 1

Format	Color
Hex	DAC5C3
RGB	218, 197, 195
RGB Percent	85%, 77%, 76%
CMY	0.1451, 0.2274, 0.2353
CMYK	0.00, 0.10, 0.11, 0.15
HSL	5°, 24%, 81%
HSV	5°, 11%, 85%
XYZ	58.7300, 58.7781, 59.8797
YIQ	203.0510, 13.1580, 3.8300

Conversions

Conversions Part 2

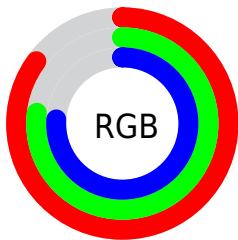
Format	Color
R _Y B	218, 197, 195
Decimal	14337475
CIE Lab	81.17, 7.04, 3.67
CIE LCh	81, 7.938, 27.576
Yxy	58.7781, 0.3311, 0.3314
Android (android.graphics.Color)	4292527555 (0xFFDAC5C3)
YUV	203.0510, -3.9691, 13.1103
Hunter-Lab	76.6669, 2.5714, 7.3591

Details

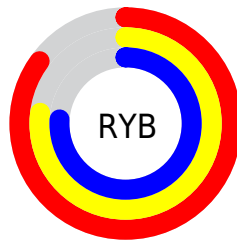
The XYZ color **58.7300, 58.7781, 59.8797** is a light color, and the websafe version is hex **CCCCCC**. A complement of this color would be **59.7161, 65.7744, 75.8785**, and the grayscale version is **56.8165, 59.7754, 65.0954**.

A 20% lighter version of the original color is **94.2525, 99.1719, 106.2699**, and **29.7344, 29.3545, 29.2981** is the 20% darker color. If you saturate the color by 10%, you get **52.2188, 49.4162, 46.4235**, and if you desaturate by 10%, it is **66.2009, 69.4823, 75.4326**.

Distribution



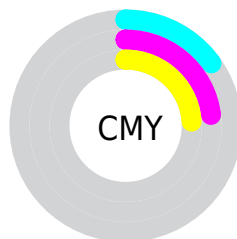
- Red (85%)
- Green (77%)
- Blue (76%)



- Red (85%)
- Yellow (77%)
- Blue (76%)



- Cyan (0%)
- Magenta (10%)
- Yellow (11%)
- Black (15%)



- Cyan (15%)
- Magenta (23%)
- Yellow (24%)

Brightness & Saturation Gradients

These gradients show how the XYZ color 58.7300, 58.7781, 59.8797 changes by changing the brightness by 10 percent. The first figure shows a shift by +10% for each color and the second figure -10%.

Similar to the brightness gradients but the following saturation gradients show a change of the XYZ color 58.7300, 58.7781, 59.8797 by changing the saturation by 10% instead.

■ 58.7300, 58.7781,
59.8797

■ 58.7300, 58.7781,
59.8797

409.8108,
420.0791, 441.9465

■ 42.6413, 42.4345,
42.8970

■ 102.1020,
103.0551, 106.1968

■ 29.7971, 29.4417,
29.4735

130.1161,
131.7573, 136.3683

■ 19.8319, 19.4152,
19.1907

162.8360,
165.3478, 171.7731

■ 12.3805, 11.9707,
11.6299

200.6271,
204.2110, 212.8299

■ 7.0774, 6.7237,
6.3727

243.8548,
248.7314, 259.9570

■ 3.5573, 3.2899,
3.0006

292.8844,

■ 1.4549, 1.2849,

299.2933, 313.5732

1.0949

348.0813,
356.2810, 374.0968

■ 0.2948, 0.1295,
0.0000

■ 0.0000, 0.0000,
0.0000

■ 58.7300, 58.7781,
59.8797

■ 58.7300, 58.7781,
59.8797

■ 52.2188, 49.4162,
46.4235

■ 66.2009, 69.4823,
75.4326

■ 46.6238, 41.3360,
34.9706

■ 74.6631, 81.5705,
93.1626

■ 41.9051, 34.4843,
25.4265

■ 82.7237, 93.6455,
108.3231

■ 38.0182, 28.8007,
17.6873

■ 34.9147, 24.2199,
11.6390

■ 32.5410, 20.6703,
7.1552

■ 30.8368, 18.0716,
4.0912

■ 29.7321, 16.3317,
2.2755

■ 29.1464, 15.3711,
1.4307

Harmonies

Analogous

The Analogous color harmony consists of three colors that are next to each other on the color wheel.



59.1009, 58.7781, 64.3848



58.7300, 58.7781, 59.8797



57.5873, 58.7781, 56.6234

Triad

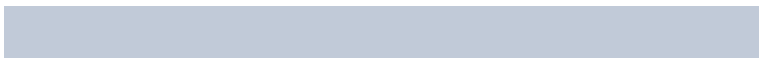
The Triadic color harmony groups three colors that are evenly spaced from another and form a triangle on the color wheel.



58.7300, 58.7781, 59.8797



53.2282, 58.7781, 59.2445



55.7326, 58.7781, 73.5255

Complementary

The Complementary color scheme is a pair of colors which are on the opposite of each other on the color wheel.



58.7300, 58.7781, 59.8797



59.7161, 65.7744, 75.8785

Split Complementary

Split-complementary colors differ from the complementary color scheme. The scheme consists of three colors, the original color and two neighbors of the complement color.



54.1809, 58.7781, 71.9896



58.7300, 58.7781, 59.8797



52.7529, 58.7781, 63.6154

Square

The Square scheme is like the rectangle color scheme, but the four colors are evenly spaced on the color wheel.



58.7300, 58.7781, 59.8797



54.4092, 58.7781, 56.2696



53.0982, 58.7781, 68.3038



57.3502, 58.7781, 72.4065

Rectangle

The Rectangle color scheme consists of four colors that form a rectangle on the color wheel.



58.7300, 58.7781, 59.8797



56.5530, 58.7781, 55.5199



53.0982, 58.7781, 68.3038



55.1862, 58.7781, 73.3010

Sweetspot

The Sweet Spot groups the original color and five complimentary colors.



58.7316, 58.7807, 59.8810



91.6551, 95.1420, 101.8126



60.8347, 58.8986, 73.1850



19.4284, 20.0929, 21.3969



0.0000, 0.0000, 0.0000



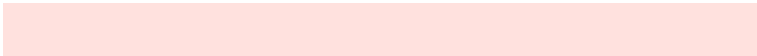
20.3446, 21.4041, 23.3091

Same Dimension

The Same Dimension uses a secret algorithm to generate beautiful new colors.



58.7316, 58.7807, 59.8810



81.2592, 80.2350, 80.2060



61.4220, 64.1614, 60.7777



13.1468, 13.2329, 13.5869



17.4945, 9.2746, 0.8681



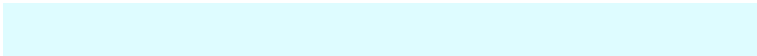
1.1656, 0.6653, 0.0670

Inverse Universe

The Inverse Universe completely reimagines the original color for something new.



59.7161, 65.7744, 75.8785



82.9737, 92.4169, 108.0728



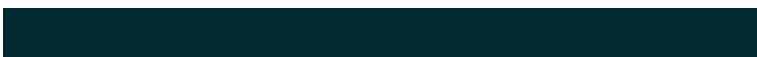
56.8931, 60.1284, 74.9375



13.3428, 14.6254, 16.7719



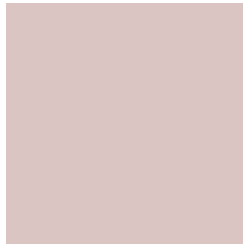
19.8583, 27.5860, 44.0164



1.3156, 1.8454, 2.8613

Previews

White Background



This preview shows how the XYZ color 58.7300, 58.7781, 59.8797 looks on a white background.

Color Contrast Check

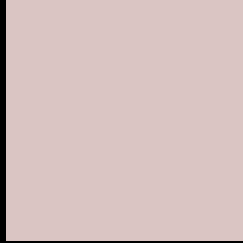
Large Text (above 18pt) WCAG AA × Fail

Any Text WCAG AA × Fail

Large Text (above 18pt) WCAG AAA × Fail

Any Text WCAG AAA × Fail

Black Background



This preview shows how the XYZ color 58.7300, 58.7781, 59.8797 looks on a black background.

Color Contrast Check

Large Text (above 18pt) WCAG AA ✓ Pass

Any Text WCAG AA ✓ Pass

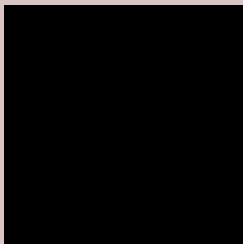
Large Text (above 18pt) WCAG AAA ✓ Pass

Any Text WCAG AAA ✓ Pass

If you want to check with other color combinations, try the [Color Contrast Checker](#).

XYZ 58.7300, 58.7781, 59.8797

Background



This preview shows how black text looks on a background with the XYZ color 58.7300, 58.7781, 59.8797.



This preview shows how white text looks on a background with the XYZ color 58.7300, 58.7781,

Color Blindness Simulation

Color vision deficiency is a very complex topic, and I could not describe the different causes any better than Wikipedia does, so if you want to learn more, you should check out their [article about color blindness](#).

Dichromacy



Original Color

58.7300, 58.7781, 59.8797

Protanopia

56.4183, 58.9263, 61.2237

Deuteranopia

59.7969, 58.6583, 59.8003



Tritanopia

60.6632, 58.8990, 69.1441

Trichromacy



Original Color

58.7300, 58.7781, 59.8797

Protanomaly

57.1964, 58.9957, 60.5973

Deuteranomaly

59.4090, 58.7921, 59.8466

Tritanomaly

59.9728, 58.9477, 65.9747

Monochromacy



Original Color

58.7300, 58.7781, 59.8797

Achromatopsia

56.7640, 59.7202, 65.0353

Achromatomaly

57.3244, 59.3533, 63.0786

CSS Examples

Text

The CSS property to change the color of the text to XYZ 58.7300, 58.7781, 59.8797 is called "color". The color property can be set on classes, ids or directly on the HTML element.

This example shows how text in the color rgb(218, 197, 195) looks like.

```
.text, #text, p{  
    color:rgb(218, 197, 195)  
}
```

If you want to add a text shadow in that color use the text-shadow property, you can generate a text shadow directly with our [CSS Text Shadow Generator](#).

Here you see how black text with a 4 pixel rgb(218, 197, 195) colored shadow looks like.

```
.shadow{ text-shadow: 4px 4px 2px rgb(218, 197, 195) }
```

Border

The CSS property to change the border of an element to XYZ 58.7300, 58.7781, 59.8797 is called "border". The border property can be set on classes, ids or directly on the HTML element.

This example shows the color as border, it can be applied via the CSS property "border" or "border-color".

```
.border, #border, table{ border:4px solid rgb(218, 197, 195) }
```


If only the border color should be changed use the property border-color.

```
.border{ border-color:rgb(218, 197, 195) }
```

If you want to add a box shadow in that color use:

Here you see how a box with a 4 pixel rgb(218, 197, 195) colored shadow looks like.

```
.boxshadow{ -moz-box-shadow:4px 4px 4px  
4px rgb(218, 197, 195); -webkit-box-  
shadow:4px 4px 4px 4px rgb(218, 197, 195);  
box-shadow:4px 4px 4px 4px rgb(218, 197,  
195) }
```

Background

The CSS property to change the background color of an element to XYZ 58.7300, 58.7781, 59.8797 is called "background". The background property can be set on classes, ids or directly on the HTML element.

```
.background, #background, body{  
background: rgb(218, 197, 195) }
```

If only the background color should be changed can be used:

```
.background{ background-color: rgb(218,  
197, 195) }
```

This example shows the color as background, it is applied via the CSS property "background".

To optimize and compress your CSS code, you can use our [online CSS compressor and optimizer](#) based on csstidy. If you want to create a linear or radial gradient as background or border, check our [CSS Gradient Generator](#).

Hey! You found this booklet interesting? Support Converting Colors with the new Membership Option!

The pro membership hides all ads, plus gives you double the colors in the color bucket, and more awesome pro features!

[Learn more, Memberships starting at \\$2.50/m!](#)

**Follow me
on Twitter!**

@ConvertingColor