

Converting Colors

XYZ(58.7365, 59.7820, 61.6080)

Have a look what the booklet for
XYZ(58.7365, 59.7820, 61.6080)
contains.

XYZ(58.8717, 59.8328, 61.8721)	3
<i>Conversions</i>	4
<i>Details</i>	6
<i>Harmonies</i>	12
<i>Previews</i>	24
<i>Color Blindness Simulation</i>	28
<i>CSS Examples</i>	31

Color

**XYZ(58.8717, 59.8328,
61.8721)**

Conversions

Conversions Part 1

Format	Color
Hex	D7C8C6
RGB	215, 200, 198
RGB Percent	84%, 78%, 78%
CMY	0.1569, 0.2157, 0.2235
CMYK	0.00, 0.07, 0.08, 0.16
HSL	7°, 18%, 81%
HSV	7°, 8%, 84%
XYZ	58.8717, 59.8328, 61.8721
YIQ	204.2570, 9.5820, 2.5580

Conversions

Conversions Part 2

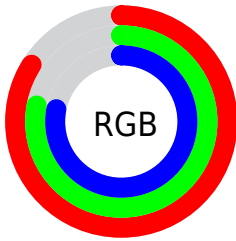
Format	Color
R _Y B	215, 200, 198
Decimal	14141638
CIE Lab	81.75, 4.89, 2.87
CIE LCh	82, 5.670, 30.447
Yxy	59.8328, 0.3260, 0.3313
Android (android.graphics.Color)	4292331718 (0xFFD7C8C6)
YUV	204.2570, -3.0847, 9.4216
Hunter-Lab	77.3517, 0.4894, 6.7212

Details

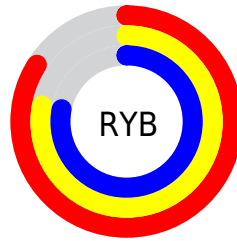
The XYZ color **58.8717, 59.8328, 61.8721** is a light color, and the websafe version is hex **CCCCCC**. A complement of this color would be **59.3487, 64.4997, 73.6126**, and the grayscale version is **57.5731, 60.5713, 65.9622**.

A 20% lighter version of the original color is **95.0500, 100.0000, 108.9000**, and **29.8101, 30.0450, 30.6137** is the 20% darker color. If you saturate the color by 10%, you get **52.4427, 50.6653, 48.3502**, and if you desaturate by 10%, it is **66.2011, 70.2362, 77.4323**.

Distribution



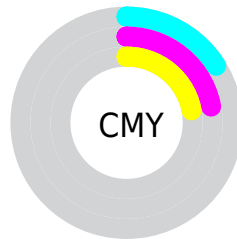
- Red (84%)
- Green (78%)
- Blue (78%)



- Red (84%)
- Yellow (78%)
- Blue (78%)



- Cyan (0%)
- Magenta (7%)
- Yellow (8%)
- Black (16%)



- Cyan (16%)
- Magenta (22%)
- Yellow (22%)

Brightness & Saturation Gradients

These gradients show how the XYZ color 58.8717, 59.8328, 61.8721 changes by changing the brightness by 10 percent. The first figure shows a shift by +10% for each color and the second figure -10%.

Similar to the brightness gradients but the following saturation gradients show a change of the XYZ color 58.8717, 59.8328, 61.8721 by changing the saturation by 10% instead.

■ 58.8717, 59.8328,
61.8721

■ 58.8717, 59.8328,
61.8721

410.3280,
423.9812, 449.4592

■ 42.7558, 43.2839,
44.4942

102.3069,
104.5871, 109.1105

■ 29.8873, 30.1079,
30.7192

130.3569,
133.5612, 139.8080

■ 19.9007, 19.9205,
20.1285

163.1156,
167.4459, 175.7826

■ 12.4307, 12.3373,
12.3034

200.9484,
206.6255, 217.4527

■ 7.1120, 6.9738,
6.8256

244.2208,
251.4845, 265.2369

■ 3.5792, 3.4457,
3.2765

293.2979,

■ 1.4669, 1.3686,

302.4072, 319.5536

1.2375

348.5452,
359.7779, 380.8216

■ 0.3032, 0.1934,
0.0097

■ 0.0000, 0.0000,
0.0000

■ 58.8717, 59.8328,
61.8721

■ 58.8717, 59.8328,
61.8721

■ 52.4427, 50.6653,
48.3502

■ 66.2011, 70.2362,
77.4323

■ 46.8743, 42.6801,
36.7784

■ 74.4585, 81.9109,
95.1064

■ 42.1315, 35.8315,
27.0678

■ 81.8347, 93.1873,
108.2815

■ 38.1746, 30.0676,
19.1211

■ 34.9609, 25.3326,
12.8320

■ 32.4433, 21.5657,
8.0830

■ 30.5695, 18.6997,
4.7408

■ 29.2794, 16.6583,
2.6495

■ 28.4964, 15.3511,
1.5904

Harmonies

Analogous

The Analogous color harmony consists of three colors that are next to each other on the color wheel.



59.1962, 59.8328, 65.0964



58.8717, 59.8328, 61.8721



58.0093, 59.8328, 59.5934

Triad

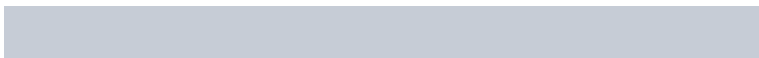
The Triadic color harmony groups three colors that are evenly spaced from another and form a triangle on the color wheel.



58.8717, 59.8328, 61.8721



54.8953, 59.8328, 61.9581



56.8872, 59.8328, 71.9468

Complementary

The Complementary color scheme is a pair of colors which are on the opposite of each other on the color wheel.



58.8717, 59.8328, 61.8721



59.3487, 64.4997, 73.6126

Split Complementary

Split-complementary colors differ from the complementary color scheme. The scheme consists of three colors, the original color and two neighbors of the complement color.



55.7443, 59.8328, 71.0369



58.8717, 59.8328, 61.8721



54.6041, 59.8328, 65.1991

Square

The Square scheme is like the rectangle color scheme, but the four colors are evenly spaced on the color wheel.



58.8717, 59.8328, 61.8721



55.7137, 59.8328, 59.6418



54.9128, 59.8328, 68.5370



58.0407, 59.8328, 70.9825

Rectangle

The Rectangle color scheme consists of four colors that form a rectangle on the color wheel.



58.8717, 59.8328, 61.8721



57.2512, 59.8328, 58.8761



54.9128, 59.8328, 68.5370



56.4891, 59.8328, 71.8496

Sweetspot

The Sweet Spot groups the original color and five complimentary colors.



58.8734, 59.8354, 61.8734



92.8212, 96.8389, 104.1599



60.2317, 59.6411, 71.3001



19.8909, 20.7607, 22.3441



0.0000, 0.0000, 0.0000



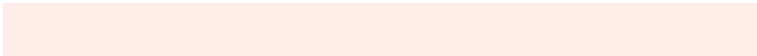
20.3446, 21.4041, 23.3091

Same Dimension

The Same Dimension uses a secret algorithm to generate beautiful new colors.



58.8734, 59.8354, 61.8734



85.4508, 86.3654, 88.5476



60.8922, 63.8730, 62.5463



12.5400, 12.6542, 12.9423



17.0145, 9.1462, 0.8686



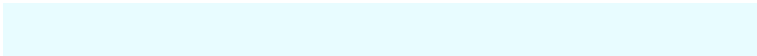
1.0665, 0.6321, 0.0658

Inverse Universe

The Inverse Universe completely reimagines the original color for something new.



59.3487, 64.4997, 73.6126



86.2481, 94.1905, 108.2426



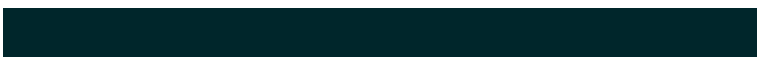
57.2712, 60.3448, 72.9201



12.6614, 13.8463, 15.9428



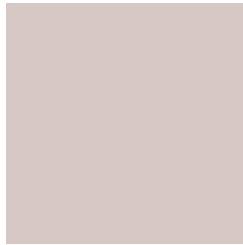
18.3571, 24.9759, 42.3065



1.1433, 1.5787, 2.5638

Previews

White Background



This preview shows how the XYZ color 58.8717, 59.8328, 61.8721 looks on a white background.

Color Contrast Check

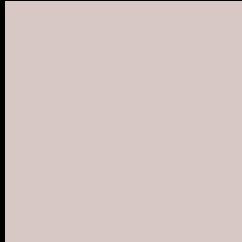
Large Text (above 18pt) WCAG AA × Fail

Any Text WCAG AA × Fail

Large Text (above 18pt) WCAG AAA × Fail

Any Text WCAG AAA × Fail

Black Background



This preview shows how the XYZ color 58.8717, 59.8328, 61.8721 looks on a black background.

Color Contrast Check

Large Text (above 18pt) WCAG AA ✓ Pass

Any Text WCAG AA ✓ Pass

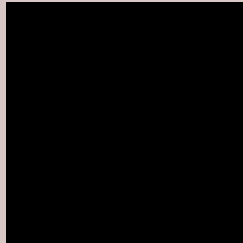
Large Text (above 18pt) WCAG AAA ✓ Pass

Any Text WCAG AAA ✓ Pass

If you want to check with other color combinations, try the [Color Contrast Checker](#).

XYZ 58.8717, 59.8328, 61.8721

Background



This preview shows how black text looks on a background with the XYZ color 58.8717, 59.8328, 61.8721.



This preview shows how white text looks on a background with the XYZ color 58.8717, 59.8328,

Color Blindness Simulation

Color vision deficiency is a very complex topic, and I could not describe the different causes any better than Wikipedia does, so if you want to learn more, you should check out their [article about color blindness](#).

Dichromacy



Original Color

58.8717, 59.8328, 61.8721

Protanopia

57.4418, 59.7745, 62.5430

Deuteranopia

61.0155, 59.9033, 62.3795



Tritanopia

60.8196, 59.9440, 71.3156

Trichromacy



Original Color

58.8717, 59.8328, 61.8721

Protanomaly

58.0594, 59.7457, 62.5048

Deuteranomaly

60.3217, 59.8838, 62.4123

Tritanomaly

60.1275, 59.9998, 68.0866

Monochromacy



Original Color

58.8717, 59.8328, 61.8721

Achromatopsia

57.3938, 60.3827, 65.7568

Achromatomaly

58.0290, 60.3860, 64.4743

CSS Examples

Text

The CSS property to change the color of the text to XYZ 58.8717, 59.8328, 61.8721 is called "color". The color property can be set on classes, ids or directly on the HTML element.

This example shows how text in the color rgb(215, 200, 198) looks like.

```
.text, #text, p{  
    color:rgb(215, 200, 198)  
}
```

If you want to add a text shadow in that color use the text-shadow property, you can generate a text shadow directly with our [CSS Text Shadow Generator](#).

Here you see how black text with a 4 pixel rgb(215, 200, 198) colored shadow looks like.

```
.shadow{ text-shadow: 4px 4px 2px rgb(215, 200, 198) }
```

Border

The CSS property to change the border of an element to XYZ 58.8717, 59.8328, 61.8721 is called "border". The border property can be set on classes, ids or directly on the HTML element.

This example shows the color as border, it can be applied via the CSS property "border" or "border-color".

```
.border, #border, table{ border:4px solid rgb(215, 200, 198) }
```


If only the border color should be changed use the property `border-color`.

```
.border{ border-color:rgb(215, 200, 198) }
```

If you want to add a box shadow in that color use:

Here you see how a box with a 4 pixel `rgb(215, 200, 198)` colored shadow looks like.

```
.boxshadow{ -moz-box-shadow:4px 4px 4px  
4px rgb(215, 200, 198); -webkit-box-  
shadow:4px 4px 4px 4px rgb(215, 200, 198);  
box-shadow:4px 4px 4px 4px rgb(215, 200,  
198) }
```

Background

The CSS property to change the background color of an element to XYZ 58.8717, 59.8328, 61.8721 is called "background". The background property can be set on classes, ids or directly on the HTML element.

```
.background, #background, body{  
background: rgb(215, 200, 198) }
```

If only the background color should be changed can be used:

```
.background{ background-color: rgb(215,  
200, 198) }
```

This example shows the color as background, it is applied via the CSS property "background".

To optimize and compress your CSS code, you can use our [online CSS compressor and optimizer](#) based on csstidy. If you want to create a linear or radial gradient as background or border, check our [CSS Gradient Generator](#).

Hey! You found this booklet interesting? Support Converting Colors with the new Membership Option!

The pro membership hides all ads, plus gives you double the colors in the color bucket, and more awesome pro features!

[Learn more, Memberships starting at \\$2.50/m!](#)

**Follow me
on Twitter!**

@ConvertingColor