

Converting Colors

XYZ(58.7404, 58.8552, 61.6738)

Have a look what the booklet for
XYZ(58.7404, 58.8552, 61.6738)
contains.

XYZ(58.7746, 58.7614, 61.6704)	3
<i>Conversions</i>	4
<i>Details</i>	6
<i>Harmonies</i>	12
<i>Previews</i>	24
<i>Color Blindness Simulation</i>	28
<i>CSS Examples</i>	31

Color

**XYZ(58.7746, 58.7614,
61.6704)**

Conversions

Conversions Part 1

Format	Color
Hex	D9C5C6
RGB	217, 197, 198
RGB Percent	85%, 77%, 78%
CMY	0.1490, 0.2274, 0.2235
CMYK	0.00, 0.09, 0.09, 0.15
HSL	357°, 21%, 81%
HSV	357°, 9%, 85%
XYZ	58.7746, 58.7614, 61.6704
YIQ	203.0940, 11.5990, 4.5510

Conversions

Conversions Part 2

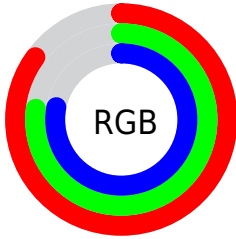
Format	Color
R _Y B	217, 197, 198
Decimal	14271942
CIE Lab	81.16, 7.18, 2.04
CIE LCh	81, 7.468, 15.864
Yxy	58.7614, 0.3280, 0.3279
Android (android.graphics.Color)	4292462022 (0xFFD9C5C6)
YUV	203.0940, -2.5113, 12.1956
Hunter-Lab	76.6560, 2.7137, 5.9599

Details

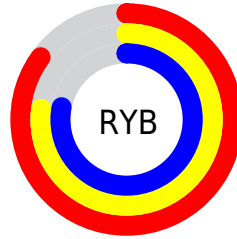
The XYZ color **58.7746, 58.7614, 61.6704** is a light color, and the websafe version is hex **CCCCCC**. A complement of this color would be **60.2358, 66.4555, 74.6215**, and the grayscale version is **56.8353, 59.7952, 65.1169**.

A 20% lighter version of the original color is **94.7318, 99.3636, 108.7939**, and **29.7568, 29.3399, 30.4804** is the 20% darker color. If you saturate the color by 10%, you get **51.9790, 48.7203, 48.4595**, and if you desaturate by 10%, it is **66.6065, 70.3557, 76.8255**.

Distribution



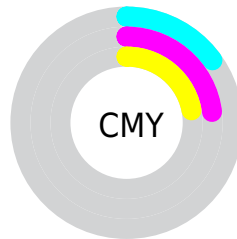
- Red (85%)
- Green (77%)
- Blue (78%)



- Red (85%)
- Yellow (77%)
- Blue (78%)



- Cyan (0%)
- Magenta (9%)
- Yellow (9%)
- Black (15%)



- Cyan (15%)
- Magenta (23%)
- Yellow (22%)

Brightness & Saturation Gradients

These gradients show how the XYZ color 58.7746, 58.7614, 61.6704 changes by changing the brightness by 10 percent. The first figure shows a shift by +10% for each color and the second figure -10%.

Similar to the brightness gradients but the following saturation gradients show a change of the XYZ color 58.7746, 58.7614, 61.6704 by changing the saturation by 10% instead.

■ 58.7746, 58.7614,
61.6704

■ 58.7746, 58.7614,
61.6704

409.9736,
420.0171, 448.7022

■ 42.6774, 42.4211,
44.3324

102.1665,
103.0308, 108.8160

■ 29.8255, 29.4311,
30.5928

130.1919,
131.7287, 139.4606

■ 19.8536, 19.4072,
20.0331

162.9240,
165.3145, 175.3779

■ 12.3963, 11.9649,
12.2348

200.7283,
204.1727, 216.9863

■ 7.0883, 6.7198,
6.7793

243.9700,
248.6877, 264.7044

■ 3.5642, 3.2875,
3.2481

293.0146,

■ 1.4587, 1.2836,

299.2438, 318.9507

1.2227

348.2273,
356.2255, 380.1438

■ 0.2975, 0.1284,
0.0000

■ 0.0000, 0.0000,
0.0000

■ 58.7746, 58.7614,
61.6704

■ 58.7746, 58.7614,
61.6704

■ 51.9790, 48.7203,
48.4595

■ 66.6065, 70.3557,
76.8255

■ 46.1718, 40.1591,
37.1105

■ 75.5105, 83.5571,
93.9950

■ 41.3082, 33.0103,
27.5409

■ 82.4256, 93.4919,
108.3092

■ 37.3385, 27.1979,
19.6605

■ 34.2082, 22.6390,
13.3711

■ 31.8569, 19.2413,
8.5644

■ 30.2161, 16.8999,
5.1189

■ 29.2053, 15.4910,
2.8933

■ 28.7032, 14.8165,
1.7089

Harmonies

Analogous

The Analogous color harmony consists of three colors that are next to each other on the color wheel.



58.7987, 58.7614, 66.0938



58.7746, 58.7614, 61.6704



57.9575, 58.7614, 58.0342

Triad

The Triadic color harmony groups three colors that are evenly spaced from another and form a triangle on the color wheel.



58.7746, 58.7614, 61.6704



53.7339, 58.7614, 58.2055



55.1244, 58.7614, 72.6430

Complementary

The Complementary color scheme is a pair of colors which are on the opposite of each other on the color wheel.



58.7746, 58.7614, 61.6704



60.2358, 66.4555, 74.6215

Split Complementary

Split-complementary colors differ from the complementary color scheme. The scheme consists of three colors, the original color and two neighbors of the complement color.



53.7960, 58.7614, 70.3211



58.7746, 58.7614, 61.6704



53.0034, 58.7614, 61.9141

Square

The Square scheme is like the rectangle color scheme, but the four colors are evenly spaced on the color wheel.



58.7746, 58.7614, 61.6704



55.0382, 58.7614, 56.0980



53.0259, 58.7614, 66.3490



56.6717, 58.7614, 72.5703

Rectangle

The Rectangle color scheme consists of four colors that form a rectangle on the color wheel.



58.7746, 58.7614, 61.6704



57.0816, 58.7614, 56.4856



53.0259, 58.7614, 66.3490



54.6381, 58.7614, 72.1122

Sweetspot

The Sweet Spot groups the original color and five complimentary colors.



58.7762, 58.7640, 61.6717



91.5095, 94.7564, 102.0552



60.8113, 59.5438, 73.9345



19.3893, 19.9894, 21.4620



0.0000, 0.0000, 0.0000



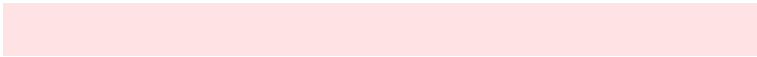
20.3446, 21.4041, 23.3091

Same Dimension

The Same Dimension uses a secret algorithm to generate beautiful new colors.



58.7762, 58.7640, 61.6717



82.7473, 81.7916, 85.0782



60.7664, 62.9276, 61.7699



13.0822, 13.0620, 13.6942



17.3695, 8.9488, 1.0599



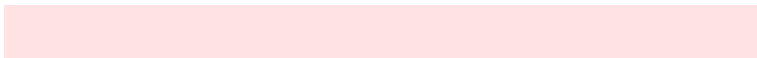
1.1347, 0.5835, 0.1185

Inverse Universe

The Inverse Universe completely reimagines the original color for something new.



58.7762, 58.7640, 61.6717



82.7473, 81.7916, 85.0782



58.1084, 61.9940, 74.5499



13.0822, 13.0620, 13.6942



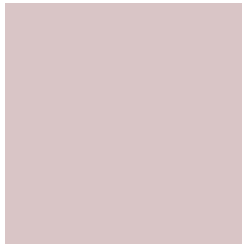
17.3695, 8.9488, 1.0599



1.1347, 0.5835, 0.1185

Previews

White Background



This preview shows how the XYZ color 58.7746, 58.7614, 61.6704 looks on a white background.

Color Contrast Check

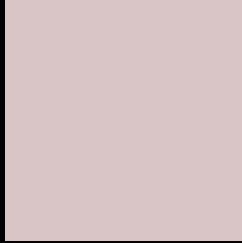
Large Text (above 18pt) WCAG AA × Fail

Any Text WCAG AA × Fail

Large Text (above 18pt) WCAG AAA × Fail

Any Text WCAG AAA × Fail

Black Background



This preview shows how the XYZ color 58.7746, 58.7614, 61.6704 looks on a black background.

Color Contrast Check

Large Text (above 18pt) WCAG AA ✓ Pass

Any Text WCAG AA ✓ Pass

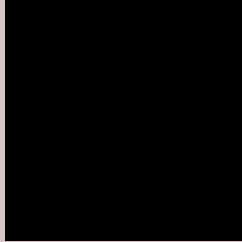
Large Text (above 18pt) WCAG AAA ✓ Pass

Any Text WCAG AAA ✓ Pass

If you want to check with other color combinations, try the [Color Contrast Checker](#).

XYZ 58.7746, 58.7614, 61.6704

Background



This preview shows how black text looks on a background with the XYZ color 58.7746, 58.7614, 61.6704.



This preview shows how white text looks on a background with the XYZ color 58.7746, 58.7614,

61.6704.

Color Blindness Simulation

Color vision deficiency is a very complex topic, and I could not describe the different causes any better than Wikipedia does, so if you want to learn more, you should check out their [article about color blindness](#).

Dichromacy



Original Color

58.7746, 58.7614, 61.6704

Protanopia

56.4888, 58.9226, 63.0395

Deuteranopia

59.8324, 58.6370, 61.5907



Tritanopia

60.3614, 58.7434, 69.1300

Trichromacy



Original Color

58.7746, 58.7614, 61.6704

Protanomaly

57.2576, 58.9874, 62.4007

Deuteranomaly

59.4482, 58.7727, 61.6371

Tritanomaly

59.7939, 58.8415, 66.5986

Monochromacy



Original Color

58.7746, 58.7614, 61.6704

Achromatopsia

56.7640, 59.7202, 65.0353

Achromatomaly

57.4417, 59.4002, 63.6962

CSS Examples

Text

The CSS property to change the color of the text to XYZ 58.7746, 58.7614, 61.6704 is called "color". The color property can be set on classes, ids or directly on the HTML element.

This example shows how text in the color rgb(217, 197, 198) looks like.

```
.text, #text, p{  
    color:rgb(217, 197, 198)  
}
```

If you want to add a text shadow in that color use the text-shadow property, you can generate a text shadow directly with our [CSS Text Shadow Generator](#).

Here you see how black text with a 4 pixel rgb(217, 197, 198) colored shadow looks like.

```
.shadow{ text-shadow: 4px 4px 2px rgb(217, 197, 198) }
```

Border

The CSS property to change the border of an element to XYZ 58.7746, 58.7614, 61.6704 is called "border". The border property can be set on classes, ids or directly on the HTML element.

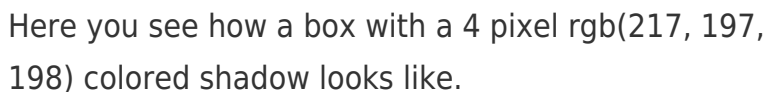
This example shows the color as border, it can be applied via the CSS property "border" or "border-color".

```
.border, #border, table{ border:4px solid rgb(217, 197, 198) }
```


If only the border color should be changed use the property `border-color`.

```
.border{ border-color:rgb(217, 197, 198) }
```

If you want to add a box shadow in that color use:



Here you see how a box with a 4 pixel `rgb(217, 197, 198)` colored shadow looks like.

```
.boxshadow{ -moz-box-shadow:4px 4px 4px 4px rgb(217, 197, 198); -webkit-box-shadow:4px 4px 4px 4px rgb(217, 197, 198); box-shadow:4px 4px 4px 4px rgb(217, 197, 198) }
```

Background

The CSS property to change the background color of an element to XYZ 58.7746, 58.7614, 61.6704 is called "background". The background property can be set on classes, ids or directly on the HTML element.

```
.background, #background, body{  
background: rgb(217, 197, 198) }
```

If only the background color should be changed can be used:

```
.background{ background-color: rgb(217,  
197, 198) }
```

This example shows the color as background, it is applied via the CSS property "background".

To optimize and compress your CSS code, you can use our [online CSS compressor and optimizer](#) based on csstidy. If you want to create a linear or radial gradient as background or border, check our [CSS Gradient Generator](#).

Hey! You found this booklet interesting? Support Converting Colors with the new Membership Option!

The pro membership hides all ads, plus gives you double the colors in the color bucket, and more awesome pro features!

[Learn more, Memberships starting at \\$2.50/m!](#)

**Follow me
on Twitter!**

@ConvertingColor