

Converting Colors

XYZ(58.8318, 55.6817, 52.7755)

Have a look what the booklet for
XYZ(58.8318, 55.6817, 52.7755)
contains.

XYZ(59.0552, 55.8243, 53.0100)	3
<i>Conversions</i>	4
<i>Details</i>	6
<i>Harmonies</i>	12
<i>Previews</i>	24
<i>Color Blindness Simulation</i>	28
<i>CSS Examples</i>	31

Color

**XYZ(59.0552, 55.8243,
53.0100)**

Conversions

Conversions Part 1

Format	Color
Hex	E6BBB8
RGB	230, 187, 184
RGB Percent	90%, 73%, 72%
CMY	0.0980, 0.2666, 0.2784
CMYK	0.00, 0.19, 0.20, 0.10
HSL	4°, 48%, 81%
HSV	4°, 20%, 90%
XYZ	59.0552, 55.8243, 53.0100
YIQ	199.5150, 26.5910, 8.1830

Conversions

Conversions Part 2

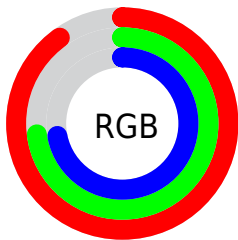
Format	Color
R _Y B	230, 187, 184
Decimal	15121336
CIE Lab	79.51, 14.96, 7.34
CIE LCh	80, 16.663, 26.145
Yxy	55.8243, 0.3518, 0.3325
Android (android.graphics.Color)	4293311416 (0xFFE6BBB8)
YUV	199.5150, -7.6489, 26.7353
Hunter-Lab	74.7157, 10.3339, 10.2353

Details

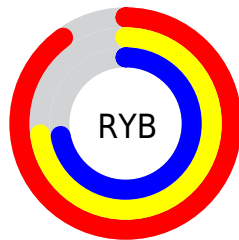
The XYZ color **59.0552, 55.8243, 53.0100** is a light color, and the websafe version is hex **FFCCCC**. A complement of this color would be **61.5187, 70.8400, 85.2946**, and the grayscale version is **54.6369, 57.4823, 62.5982**.

A 20% lighter version of the original color is **89.0188, 91.6525, 95.4370**, and **30.0774, 27.6876, 25.2317** is the 20% darker color. If you saturate the color by 10%, you get **52.6134, 46.4901, 39.9193**, and if you desaturate by 10%, it is **66.5748, 66.6858, 68.3952**.

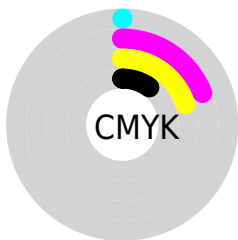
Distribution



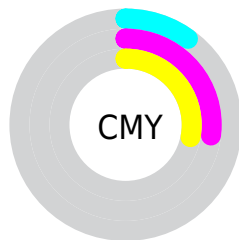
- Red (90%)
- Green (73%)
- Blue (72%)



- Red (90%)
- Yellow (73%)
- Blue (72%)



- Cyan (0%)
- Magenta (19%)
- Yellow (20%)
- Black (10%)





- Cyan (10%)
- Magenta (27%)
- Yellow (28%)

Brightness & Saturation Gradients


These gradients show how the XYZ color 59.0552, 55.8243, 53.0100 changes by changing the brightness by 10 percent. The first figure shows a shift by +10% for each color and the second figure -10%.


Similar to the brightness gradients but the following saturation gradients show a change of the XYZ color 59.0552, 55.8243, 53.0100 by changing the saturation by 10% instead.


 59.0552, 55.8243,
53.0100

 59.0552, 55.8243,
53.0100


410.9972,
409.0290, 415.3909

 42.9041, 40.0621,
37.4230


 102.5721, 98.7476,
96.0608

 30.0041, 27.5869,
25.2368


130.6685,
126.6775, 124.3616

 19.9898, 18.0145,
16.0329


163.4775,
159.4321, 157.7375

 12.4958, 10.9604,
9.3929

201.3643,
197.3958, 196.6069

 7.1569, 6.0402,
4.8980

244.6943,
240.9529, 241.3884

 3.6076, 2.8696,
2.1299

293.8329,

 1.4826, 1.0640,

290.4879, 292.5005

0.6335

349.1454,
346.3851, 350.3618

■ 0.3140, 0.0000,
0.0000

■ 0.0000, 0.0000,
0.0000

■ 59.0552, 55.8243,
53.0100

■ 59.0552, 55.8243,
53.0100

■ 52.6134, 46.4901,
39.9193

■ 66.5748, 66.6858,
68.3952

■ 47.1956, 38.6075,
29.0097

■ 75.2137, 79.1308,
86.1736

■ 42.7505, 32.1060,
20.1639

■ 85.0166, 93.2219,
106.4426

■ 39.2202, 26.9058,
13.2517

■ 86.4434, 95.5631,
108.4972

■ 36.5409, 22.9194,
8.1284

■ 34.6405, 20.0483,
4.6288

■ 33.4348, 18.1784,
2.5572

■ 32.8045, 17.1654,
1.5843

■ 32.8045, 17.1654,
1.5843

Harmonies

Analogous

The Analogous color harmony consists of three colors that are next to each other on the color wheel.



59.7502, 55.8243, 62.0319



59.0552, 55.8243, 53.0100



56.7298, 55.8243, 46.7122

Triad

The Triadic color harmony groups three colors that are evenly spaced from another and form a triangle on the color wheel.



59.0552, 55.8243, 53.0100



47.8870, 55.8243, 51.0731



52.6274, 55.8243, 81.1130

Complementary

The Complementary color scheme is a pair of colors which are on the opposite of each other on the color wheel.



59.0552, 55.8243, 53.0100



61.5187, 70.8400, 85.2946

Split Complementary

Split-complementary colors differ from the complementary color scheme. The scheme consists of three colors, the original color and two neighbors of the complement color.



49.5507, 55.8243, 77.4291



59.0552, 55.8243, 53.0100



46.8876, 55.8243, 59.5513

Square

The Square scheme is like the rectangle color scheme, but the four colors are evenly spaced on the color wheel.



59.0552, 55.8243, 53.0100



50.2708, 55.8243, 45.6793



47.4837, 55.8243, 69.2813



55.9491, 55.8243, 78.8958

Rectangle

The Rectangle color scheme consists of four colors that form a rectangle on the color wheel.



59.0552, 55.8243, 53.0100



54.6170, 55.8243, 44.5716



47.4837, 55.8243, 69.2813



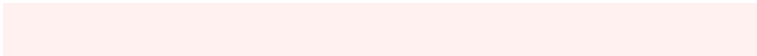
51.5315, 55.8243, 80.5144

Sweetspot

The Sweet Spot groups the original color and five complimentary colors.



59.0567, 55.8268, 53.0112



88.2900, 90.2661, 94.9743



63.7362, 56.6895, 80.7641



18.7470, 19.1035, 20.0185



0.0000, 0.0000, 0.0000



20.3446, 21.4041, 23.3091

Same Dimension

The Same Dimension uses a secret algorithm to generate beautiful new colors.



59.0567, 55.8268, 53.0112



71.1028, 65.4414, 59.8052



64.1596, 66.0326, 54.7121



14.4522, 14.5183, 14.9450



18.6024, 9.7790, 0.9071



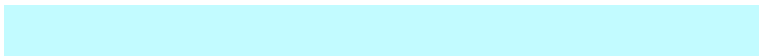
1.4014, 0.7761, 0.0759

Inverse Universe

The Inverse Universe completely reimagines the original color for something new.



61.5187, 70.8400, 85.2946



74.7450, 87.6592, 107.5882



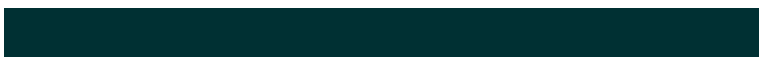
55.8104, 59.4235, 83.3918



14.7226, 16.1667, 18.4888



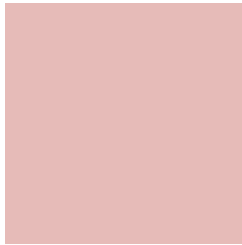
21.8761, 30.8142, 47.1779



1.6410, 2.3260, 3.4944

Previews

White Background



This preview shows how the XYZ color 59.0552, 55.8243, 53.0100 looks on a white background.

Color Contrast Check

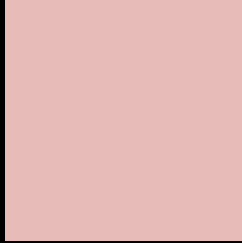
Large Text (above 18pt) WCAG AA × Fail

Any Text WCAG AA × Fail

Large Text (above 18pt) WCAG AAA × Fail

Any Text WCAG AAA × Fail

Black Background



This preview shows how the XYZ color 59.0552, 55.8243, 53.0100 looks on a black background.

Color Contrast Check

Large Text (above 18pt) WCAG AA ✓ Pass

Any Text WCAG AA ✓ Pass

Large Text (above 18pt) WCAG AAA ✓ Pass

Any Text WCAG AAA ✓ Pass

If you want to check with other color combinations, try the [Color Contrast Checker](#).

XYZ 59.0552, 55.8243, 53.0100

Background



This preview shows how black text looks on a background with the XYZ color 59.0552, 55.8243, 53.0100.

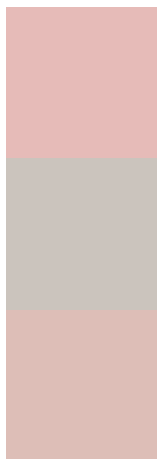


This preview shows how white text looks on a background with the XYZ color 59.0552, 55.8243,

Color Blindness Simulation

Color vision deficiency is a very complex topic, and I could not describe the different causes any better than Wikipedia does, so if you want to learn more, you should check out their [article about color blindness](#).

Dichromacy



Original Color

59.0552, 55.8243, 53.0100

Protanopia

53.5538, 55.8505, 56.1017

Deuteranopia

56.7795, 55.6180, 52.5425



Tritanopia

60.9365, 55.9772, 61.6258

Trichromacy



Original Color

59.0552, 55.8243, 53.0100

Protanomaly

55.4802, 55.8739, 54.8743

Deuteranomaly

57.4853, 55.6614, 52.5137

Tritanomaly

60.2515, 56.0018, 58.6728

Monochromacy



Original Color

59.0552, 55.8243, 53.0100

Achromatopsia

54.8990, 57.7580, 62.8985

Achromatomaly

56.1167, 56.7741, 59.0398

CSS Examples

Text

The CSS property to change the color of the text to XYZ 59.0552, 55.8243, 53.0100 is called "color". The color property can be set on classes, ids or directly on the HTML element.

This example shows how text in the color `rgb(230, 187, 184)` looks like.

```
.text, #text, p{  
    color:rgb(230, 187, 184)  
}
```

If you want to add a text shadow in that color use the text-shadow property, you can generate a text shadow directly with our [CSS Text Shadow Generator](#).

Here you see how black text with a 4 pixel rgb(230, 187, 184) colored shadow looks like.

```
.shadow{ text-shadow: 4px 4px 2px rgb(230, 187, 184) }
```

Border

The CSS property to change the border of an element to XYZ 59.0552, 55.8243, 53.0100 is called "border". The border property can be set on classes, ids or directly on the HTML element.

This example shows the color as border, it can be applied via the CSS property "border" or "border-color".

```
.border, #border, table{ border:4px solid rgb(230, 187, 184) }
```


If only the border color should be changed use the property `border-color`.

```
.border{ border-color:rgb(230, 187, 184) }
```

If you want to add a box shadow in that color use:

Here you see how a box with a 4 pixel `rgb(230, 187, 184)` colored shadow looks like.

```
.boxshadow{ -moz-box-shadow:4px 4px 4px  
4px rgb(230, 187, 184); -webkit-box-  
shadow:4px 4px 4px 4px rgb(230, 187, 184);  
box-shadow:4px 4px 4px 4px rgb(230, 187,  
184) }
```

Background

The CSS property to change the background color of an element to XYZ 59.0552, 55.8243, 53.0100 is called "background". The background property can be set on classes, ids or directly on the HTML element.

```
.background, #background, body{  
background: rgb(230, 187, 184) }
```

If only the background color should be changed can be used:

```
.background{ background-color: rgb(230,  
187, 184) }
```

This example shows the color as background, it is applied via the CSS property "background".

To optimize and compress your CSS code, you can use our [online CSS compressor and optimizer](#) based on csstidy. If you want to create a linear or radial gradient as background or border, check our [CSS Gradient Generator](#).

Hey! You found this booklet interesting? Support Converting Colors with the new Membership Option!

The pro membership hides all ads, plus gives you double the colors in the color bucket, and more awesome pro features!

[Learn more, Memberships starting at \\$2.50/m!](#)

**Follow me
on Twitter!**

@ConvertingColor