

Converting Colors

XYZ(58.8433, 54.7698, 57.1387)

Have a look what the booklet for
XYZ(58.8433, 54.7698, 57.1387)
contains.

XYZ(58.9680, 54.7448, 57.3280)	3
<i>Conversions</i>	4
<i>Details</i>	6
<i>Harmonies</i>	12
<i>Previews</i>	24
<i>Color Blindness Simulation</i>	28
<i>CSS Examples</i>	31

Color

**XYZ(58.9680, 54.7448,
57.3280)**

Conversions

Conversions Part 1

Format	Color
Hex	E5B8C0
RGB	229, 184, 192
RGB Percent	90%, 72%, 75%
CMY	0.1020, 0.2784, 0.2471
CMYK	0.00, 0.20, 0.16, 0.10
HSL	349°, 46%, 81%
HSV	349°, 20%, 90%
XYZ	58.9680, 54.7448, 57.3280
YIQ	198.3670, 24.2520, 12.0280

Conversions

Conversions Part 2

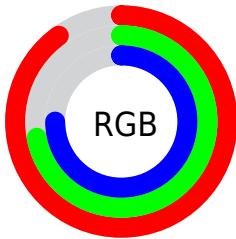
Format	Color
R _Y B	229, 184, 192
Decimal	15055040
CIE Lab	78.89, 17.42, 2.11
CIE LCh	79, 17.546, 6.917
Yxy	54.7448, 0.3448, 0.3201
Android (android.graphics.Color)	4293245120 (0xFFE5B8C0)
YUV	198.3670, -3.1389, 26.8651
Hunter-Lab	73.9897, 12.7781, 5.8543

Details

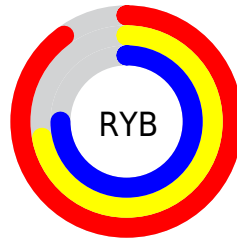
The XYZ color **58.9680, 54.7448, 57.3280** is a light color, and the websafe version is hex **FFCCCC**. A complement of this color would be **60.8398, 71.4507, 78.9949**, and the grayscale version is **53.9092, 56.7167, 61.7645**.

A 20% lighter version of the original color is **89.3434, 90.3575, 101.5388**, and **30.0101, 26.9809, 28.0522** is the 20% darker color. If you saturate the color by 10%, you get **52.6360, 45.2085, 45.5736**, and if you desaturate by 10%, it is **66.3401, 65.9328, 70.7474**.

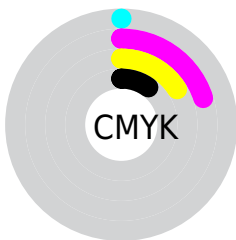
Distribution



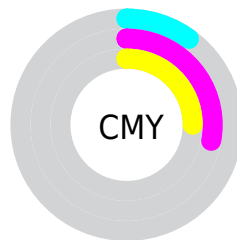
- Red (90%)
- Green (72%)
- Blue (75%)



- Red (90%)
- Yellow (72%)
- Blue (75%)



- Cyan (0%)
- Magenta (20%)
- Yellow (16%)
- Black (10%)



- Cyan (10%)
- Magenta (28%)
- Yellow (25%)

Brightness & Saturation Gradients

These gradients show how the XYZ color 58.9680, 54.7448, 57.3280 changes by changing the brightness by 10 percent. The first figure shows a shift by +10% for each color and the second figure -10%.

Similar to the brightness gradients but the following saturation gradients show a change of the XYZ color 58.9680, 54.7448, 57.3280 by changing the saturation by 10% instead.

58.9680, 54.7448,
57.3280

58.9680, 54.7448,
57.3280

410.6793,
404.9438, 432.2054

42.8336, 39.1974,
40.8575

102.4460, 97.1669,
102.4487

29.9486, 26.9134,
27.8889

130.5204,
124.8105, 131.9360

19.9474, 17.5082,
18.0036

163.3055,
157.2550, 166.5994

12.4649, 10.5975,
10.7831

201.1667,
194.8846, 206.8573

7.1355, 5.7969,
5.8089

244.4693,
238.0840, 253.1283

3.5941, 2.7219,
2.6623

293.5787,

1.4752, 0.9884,

287.2374, 305.8309

0.9244

348.8603,
342.7292, 365.3838

■ 0.3088, 0.0000,
0.0000

■ 0.0000, 0.0000,
0.0000

■ 58.9680, 54.7448,
57.3280

■ 58.9680, 54.7448,
57.3280

■ 52.6360, 45.2085,
45.5736

■ 66.3401, 65.9328,
70.7474

■ 47.2924, 37.2385,
35.4156

■ 74.7917, 78.8379,
85.8901

■ 42.8880, 30.7530,
26.7855

■ 84.3657, 93.5311,
102.8156

■ 39.3677, 25.6596,
19.6085

■ 86.1233, 95.3981,
108.4822

■ 36.6700, 21.8558,
13.8034

■ 34.7260, 19.2245,
9.2808

■ 33.4544, 17.6275,
5.9400

■ 32.7285, 16.8382,
3.6556

■ 32.7082, 16.8161,
3.5918

Harmonies

Analogous

The Analogous color harmony consists of three colors that are next to each other on the color wheel.



58.4398, 54.7448, 67.4474



58.9680, 54.7448, 57.3280



57.5728, 54.7448, 48.8147

Triad

The Triadic color harmony groups three colors that are evenly spaced from another and form a triangle on the color wheel.



58.9680, 54.7448, 57.3280



48.1139, 54.7448, 45.5520



49.4518, 54.7448, 79.0479

Complementary

The Complementary color scheme is a pair of colors which are on the opposite of each other on the color wheel.



58.9680, 54.7448, 57.3280



60.8398, 71.4507, 78.9949

Split Complementary

Split-complementary colors differ from the complementary color scheme. The scheme consists of three colors, the original color and two neighbors of the complement color.



46.8610, 54.7448, 71.8849



58.9680, 54.7448, 57.3280



46.1130, 54.7448, 52.4005

Square

The Square scheme is like the rectangle color scheme, but the four colors are evenly spaced on the color wheel.



58.9680, 54.7448, 57.3280



51.2310, 54.7448, 42.5245



45.6648, 54.7448, 61.9472



52.8439, 54.7448, 80.7448

Rectangle

The Rectangle color scheme consists of four colors that form a rectangle on the color wheel.



58.9680, 54.7448, 57.3280



55.7748, 54.7448, 44.9398



45.6648, 54.7448, 61.9472



48.4630, 54.7448, 77.1636

Sweetspot

The Sweet Spot groups the original color and five complimentary colors.



58.9695, 54.7473, 57.3291



88.4018, 89.8397, 97.0161



61.0278, 55.2737, 81.5816



18.7734, 19.0032, 20.4991



0.0000, 0.0000, 0.0000



20.3446, 21.4041, 23.3091

Same Dimension

The Same Dimension uses a secret algorithm to generate beautiful new colors.



58.9695, 54.7473, 57.3291



71.4676, 64.1467, 66.1671



61.2178, 60.6235, 53.8255



14.4810, 14.4096, 15.4675



18.7320, 9.6270, 2.2175



1.4149, 0.7237, 0.3254

Inverse Universe

The Inverse Universe completely reimagines the original color for something new.



58.9695, 54.7473, 57.3291



71.4676, 64.1467, 66.1671



58.1489, 64.3230, 83.4800



14.4810, 14.4096, 15.4675



18.7320, 9.6270, 2.2175



1.4149, 0.7237, 0.3254

Previews

White Background



This preview shows how the XYZ color 58.9680, 54.7448, 57.3280 looks on a white background.

Color Contrast Check

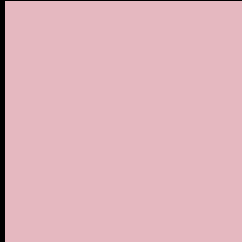
Large Text (above 18pt) WCAG AA × Fail

Any Text WCAG AA × Fail

Large Text (above 18pt) WCAG AAA × Fail

Any Text WCAG AAA × Fail

Black Background



This preview shows how the XYZ color 58.9680, 54.7448, 57.3280 looks on a black background.

Color Contrast Check

Large Text (above 18pt) WCAG AA ✓ Pass

Any Text WCAG AA ✓ Pass

Large Text (above 18pt) WCAG AAA ✓ Pass

Any Text WCAG AAA ✓ Pass

If you want to check with other color combinations, try the [Color Contrast Checker](#).

XYZ 58.9680, 54.7448, 57.3280

Background



This preview shows how black text looks on a background with the XYZ color 58.9680, 54.7448, 57.3280.



This preview shows how white text looks on a background with the XYZ color 58.9680, 54.7448,

57.3280.

Color Blindness Simulation

Color vision deficiency is a very complex topic, and I could not describe the different causes any better than Wikipedia does, so if you want to learn more, you should check out their [article about color blindness](#).

Dichromacy



Original Color

58.9680, 54.7448, 57.3280

Protanopia

52.9969, 55.1132, 61.2708

Deuteranopia

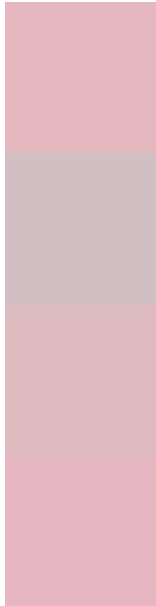
55.9205, 54.7557, 56.9118



Tritanopia

59.6447, 54.7212, 60.2420

Trichromacy



Original Color

58.9680, 54.7448, 57.3280

Protanomaly

54.8891, 54.8024, 59.9095

Deuteranomaly

56.9931, 54.6744, 56.8396

Tritanomaly

59.4169, 54.6301, 59.0428

Monochromacy



Original Color

58.9680, 54.7448, 57.3280

Achromatopsia

53.6758, 56.4712, 61.4971

Achromatomaly

55.3283, 55.6808, 60.0559

CSS Examples

Text

The CSS property to change the color of the text to XYZ 58.9680, 54.7448, 57.3280 is called "color". The color property can be set on classes, ids or directly on the HTML element.

This example shows how text in the color rgb(229, 184, 192) looks like.

```
.text, #text, p{  
    color:rgb(229, 184, 192)  
}
```

If you want to add a text shadow in that color use the text-shadow property, you can generate a text shadow directly with our [CSS Text Shadow Generator](#).

Here you see how black text with a 4 pixel rgb(229, 184, 192) colored shadow looks like.

```
.shadow{ text-shadow: 4px 4px 2px rgb(229, 184, 192) }
```

Border

The CSS property to change the border of an element to XYZ 58.9680, 54.7448, 57.3280 is called "border". The border property can be set on classes, ids or directly on the HTML element.

This example shows the color as border, it can be applied via the CSS property "border" or "border-color".

```
.border, #border, table{ border:4px solid rgb(229, 184, 192) }
```


If only the border color should be changed use the property `border-color`.

```
.border{ border-color:rgb(229, 184, 192) }
```

If you want to add a box shadow in that color use:

Here you see how a box with a 4 pixel `rgb(229, 184, 192)` colored shadow looks like.

```
.boxshadow{ -moz-box-shadow:4px 4px 4px 4px rgb(229, 184, 192); -webkit-box-shadow:4px 4px 4px 4px rgb(229, 184, 192); box-shadow:4px 4px 4px 4px rgb(229, 184, 192) }
```

Background

The CSS property to change the background color of an element to XYZ 58.9680, 54.7448, 57.3280 is called "background". The background property can be set on classes, ids or directly on the HTML element.

```
.background, #background, body{  
background: rgb(229, 184, 192) }
```

If only the background color should be changed can be used:

```
.background{ background-color: rgb(229,  
184, 192) }
```

This example shows the color as background, it is applied via the CSS property "background".

To optimize and compress your CSS code, you can use our [online CSS compressor and optimizer](#) based on csstidy. If you want to create a linear or radial gradient as background or border, check our [CSS Gradient Generator](#).

Hey! You found this booklet interesting? Support Converting Colors with the new Membership Option!

The pro membership hides all ads, plus gives you double the colors in the color bucket, and more awesome pro features!

[Learn more, Memberships starting at \\$2.50/m!](#)

**Follow me
on Twitter!**

@ConvertingColor