

Converting Colors

XYZ(58.8781, 57.7510, 62.5144)

Have a look what the booklet for
XYZ(58.8781, 57.7510, 62.5144)
contains.

XYZ(58.9305, 57.8138, 62.6968)	3
<i>Conversions</i>	4
<i>Details</i>	6
<i>Harmonies</i>	12
<i>Previews</i>	24
<i>Color Blindness Simulation</i>	28
<i>CSS Examples</i>	31

Color

**XYZ(58.9305, 57.8138,
62.6968)**

Conversions

Conversions Part 1

Format	Color
Hex	DBC2C8
RGB	219, 194, 200
RGB Percent	86%, 76%, 78%
CMY	0.1412, 0.2392, 0.2157
CMYK	0.00, 0.11, 0.09, 0.14
HSL	346°, 26%, 81%
HSV	346°, 11%, 86%
XYZ	58.9305, 57.8138, 62.6968
YIQ	202.1590, 12.9740, 7.1660

Conversions

Conversions Part 2

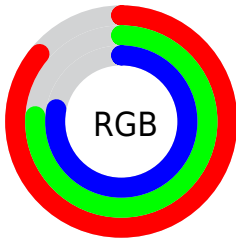
Format	Color
R _Y B	219, 194, 200
Decimal	14402248
CIE Lab	80.64, 9.82, 0.22
CIE LCh	81, 9.826, 1.301
Yxy	57.8138, 0.3284, 0.3222
Android (android.graphics.Color)	4292592328 (0xFFDBC2C8)
YUV	202.1590, -1.0644, 14.7696
Hunter-Lab	76.0354, 5.2828, 4.3358

Details

The XYZ color **58.9305, 57.8138, 62.6968** is a light color, and the websafe version is hex **CCCCCC**. A complement of this color would be **59.5921, 66.9378, 72.7335**, and the grayscale version is **56.2404, 59.1693, 64.4353**.

A 20% lighter version of the original color is **93.7872, 97.4744, 108.4791**, and **29.8762, 28.7240, 31.1638** is the 20% darker color. If you saturate the color by 10%, you get **52.5705, 48.0390, 51.4953**, and if you desaturate by 10%, it is **66.2239, 69.1149, 75.2560**.

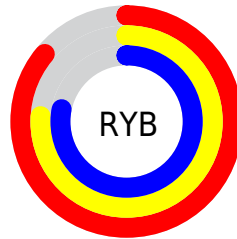
Distribution



Red (86%)

Green (76%)

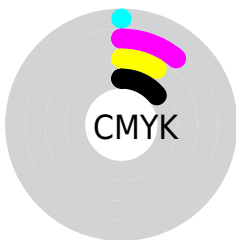
Blue (78%)



Red (86%)

Yellow (76%)

Blue (78%)

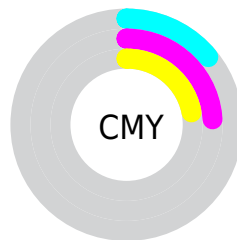


Cyan (0%)

Magenta (11%)

Yellow (9%)

Black (14%)



Cyan (14%)

Magenta (24%)

Yellow (22%)

Brightness & Saturation Gradients

These gradients show how the XYZ color 58.9305, 57.8138, 62.6968 changes by changing the brightness by 10 percent. The first figure shows a shift by +10% for each color and the second figure -10%.

Similar to the brightness gradients but the following saturation gradients show a change of the XYZ color 58.9305, 57.8138, 62.6968 by changing the saturation by 10% instead.

■ 58.9305, 57.8138,
62.6968

■ 58.9305, 57.8138,
62.6968

410.5425,
416.4918, 452.5459

■ 42.8033, 41.6590,
45.1565

■ 102.3919,
101.6517, 110.3133

■ 29.9247, 28.8344,
31.2369

130.4567,
130.1035, 141.2267

■ 19.9292, 18.9555,
20.5193

163.2316,
163.4231, 177.4348

■ 12.4516, 11.6382,
12.5853

201.0817,
201.9949, 219.3562

■ 7.1264, 6.4978,
7.0163

244.3725,
246.2032, 267.4095

■ 3.5883, 3.1501,
3.3937

293.4694,

■ 1.4720, 1.2106,

296.4326, 322.0132

1.2990

348.7376,
353.0673, 383.5858

■ 0.3066, 0.0703,
0.0610

■ 0.0000, 0.0000,
0.0000

■ 58.9305, 57.8138,
62.6968

■ 58.9305, 57.8138,
62.6968

■ 52.5705, 48.0390,
51.4953

■ 66.2239, 69.1149,
75.2560

■ 47.1009, 39.7177,
41.6017

■ 74.4817, 81.9961,
89.2128

■ 42.4827, 32.7822,
32.9687

■ 82.2198, 93.4786,
104.1039

■ 38.6719, 27.1569,
25.5445

■ 83.0237, 93.8002,
108.3372

■ 35.6206, 22.7584,
19.2737

■ 33.2755, 19.4941,
14.0964

■ 31.5762, 17.2576,
9.9469

■ 30.4512, 15.9226,
6.7517

■ 29.8456, 15.3130,
4.6950

Harmonies

Analogous

The Analogous color harmony consists of three colors that are next to each other on the color wheel.



58.4325, 57.8138, 68.4504



58.9305, 57.8138, 62.6968



58.3405, 57.8138, 57.3386

Triad

The Triadic color harmony groups three colors that are evenly spaced from another and form a triangle on the color wheel.



58.9305, 57.8138, 62.6968



52.9546, 57.8138, 53.9047



53.1039, 57.8138, 73.2326

Complementary

The Complementary color scheme is a pair of colors which are on the opposite of each other on the color wheel.



58.9305, 57.8138, 62.6968



59.5921, 66.9378, 72.7335

Split Complementary

Split-complementary colors differ from the complementary color scheme. The scheme consists of three colors, the original color and two neighbors of the complement color.



51.6940, 57.8138, 68.9147



58.9305, 57.8138, 62.6968



51.6093, 57.8138, 57.7513

Square

The Square scheme is like the rectangle color scheme, but the four colors are evenly spaced on the color wheel.



58.9305, 57.8138, 62.6968



54.8620, 57.8138, 52.4586



51.1534, 57.8138, 63.2027



55.0386, 57.8138, 74.7532

Rectangle

The Rectangle color scheme consists of four colors that form a rectangle on the color wheel.



58.9305, 57.8138, 62.6968



57.4177, 57.8138, 54.6513



51.1534, 57.8138, 63.2027



52.5546, 57.8138, 72.0476

Sweetspot

The Sweet Spot groups the original color and five complimentary colors.



58.9321, 57.8163, 62.6980



91.7357, 94.8469, 103.2463



59.4479, 57.8095, 75.0435



19.4501, 20.0137, 21.7821



0.0000, 0.0000, 0.0000



20.3446, 21.4041, 23.3091

Same Dimension

The Same Dimension uses a secret algorithm to generate beautiful new colors.



58.9321, 57.8163, 62.6980



80.6346, 77.6736, 84.0423



59.6651, 60.3819, 59.5523



13.1834, 13.1025, 14.2273



17.7329, 9.0942, 2.9735



1.1827, 0.6027, 0.3709

Inverse Universe

The Inverse Universe completely reimagines the original color for something new.



58.9321, 57.8163, 62.6980



80.6346, 77.6736, 84.0423



58.7677, 64.0484, 76.2836



13.1834, 13.1025, 14.2273



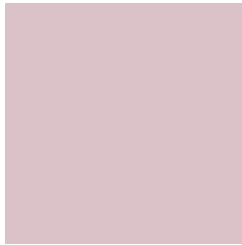
17.7329, 9.0942, 2.9735



1.1827, 0.6027, 0.3709

Previews

White Background



This preview shows how the XYZ color 58.9305, 57.8138, 62.6968 looks on a white background.

Color Contrast Check

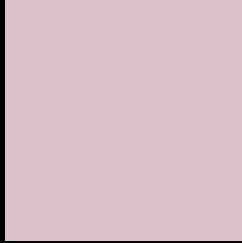
Large Text (above 18pt) WCAG AA × Fail

Any Text WCAG AA × Fail

Large Text (above 18pt) WCAG AAA × Fail

Any Text WCAG AAA × Fail

Black Background



This preview shows how the XYZ color 58.9305, 57.8138, 62.6968 looks on a black background.

Color Contrast Check

Large Text (above 18pt) WCAG AA ✓ Pass

Any Text WCAG AA ✓ Pass

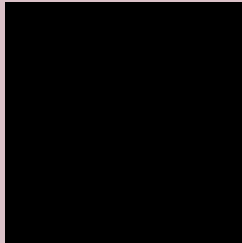
Large Text (above 18pt) WCAG AAA ✓ Pass

Any Text WCAG AAA ✓ Pass

If you want to check with other color combinations, try the [Color Contrast Checker](#).

XYZ 58.9305, 57.8138, 62.6968

Background



This preview shows how black text looks on a background with the XYZ color 58.9305, 57.8138, 62.6968.



This preview shows how white text looks on a background with the XYZ color 58.9305, 57.8138,

Color Blindness Simulation

Color vision deficiency is a very complex topic, and I could not describe the different causes any better than Wikipedia does, so if you want to learn more, you should check out their [article about color blindness](#).

Dichromacy



Original Color

58.9305, 57.8138, 62.6968

Protanopia

55.8315, 57.8552, 64.7244

Deuteranopia

58.9305, 57.8138, 62.6968



Tritanopia

59.9703, 57.9096, 67.6914

Trichromacy



Original Color

58.9305, 57.8138, 62.6968

Protanomaly

56.9214, 57.7521, 64.0243

Deuteranomaly

58.9305, 57.8138, 62.6968

Tritanomaly

59.6046, 57.7634, 65.7655

Monochromacy



Original Color

58.9305, 57.8138, 62.6968

Achromatopsia

56.1383, 59.0619, 64.3184

Achromatomaly

56.9785, 58.4738, 63.5418

CSS Examples

Text

The CSS property to change the color of the text to XYZ 58.9305, 57.8138, 62.6968 is called "color". The color property can be set on classes, ids or directly on the HTML element.

This example shows how text in the color `rgb(219, 194, 200)` looks like.

```
.text, #text, p{  
    color:rgb(219, 194, 200)  
}
```

If you want to add a text shadow in that color use the text-shadow property, you can generate a text shadow directly with our [CSS Text Shadow Generator](#).

Here you see how black text with a 4 pixel rgb(219, 194, 200) colored shadow looks like.

```
.shadow{ text-shadow: 4px 4px 2px rgb(219, 194, 200) }
```

Border

The CSS property to change the border of an element to XYZ 58.9305, 57.8138, 62.6968 is called "border". The border property can be set on classes, ids or directly on the HTML element.

This example shows the color as border, it can be applied via the CSS property "border" or "border-color".

```
.border, #border, table{ border:4px solid rgb(219, 194, 200) }
```


If only the border color should be changed use the property `border-color`.

```
.border{ border-color:rgb(219, 194, 200) }
```

If you want to add a box shadow in that color use:

Here you see how a box with a 4 pixel `rgb(219, 194, 200)` colored shadow looks like.

```
.boxshadow{ -moz-box-shadow:4px 4px 4px  
4px rgb(219, 194, 200); -webkit-box-  
shadow:4px 4px 4px 4px rgb(219, 194, 200);  
box-shadow:4px 4px 4px 4px rgb(219, 194,  
200) }
```

Background

The CSS property to change the background color of an element to XYZ 58.9305, 57.8138, 62.6968 is called "background". The background property can be set on classes, ids or directly on the HTML element.

```
.background, #background, body{  
background: rgb(219, 194, 200) }
```

If only the background color should be changed can be used:

```
.background{ background-color: rgb(219,  
194, 200) }
```

This example shows the color as background, it is applied via the CSS property "background".

To optimize and compress your CSS code, you can use our [online CSS compressor and optimizer](#) based on csstidy. If you want to create a linear or radial gradient as background or border, check our [CSS Gradient Generator](#).

Hey! You found this booklet interesting? Support Converting Colors with the new Membership Option!

The pro membership hides all ads, plus gives you double the colors in the color bucket, and more awesome pro features!

[Learn more, Memberships starting at \\$2.50/m!](#)

**Follow me
on Twitter!**

@ConvertingColor