

Converting Colors

XYZ(58.8884, 57.6215, 55.6018)

Have a look what the booklet for
XYZ(58.8884, 57.6215, 55.6018)
contains.

XYZ(58.8875, 57.6181, 55.5946)	3
<i>Conversions</i>	4
<i>Details</i>	6
<i>Harmonies</i>	12
<i>Previews</i>	24
<i>Color Blindness Simulation</i>	28
<i>CSS Examples</i>	31

Color

**XYZ(58.8875, 57.6181,
55.5946)**

Conversions

Conversions Part 1

Format	Color
Hex	E0C1BC
RGB	224, 193, 188
RGB Percent	88%, 76%, 74%
CMY	0.1216, 0.2431, 0.2627
CMYK	0.00, 0.14, 0.16, 0.12
HSL	8°, 37%, 81%
HSV	8°, 16%, 88%
XYZ	58.8875, 57.6181, 55.5946
YIQ	201.6990, 20.0810, 5.0170

Conversions

Conversions Part 2

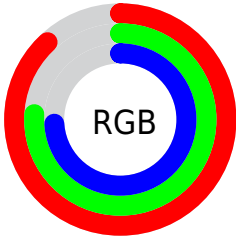
Format	Color
RYB	224, 194, 188
Decimal	14729660
CIELab	80.53, 10.19, 6.57
CIElCh	81, 12.125, 32.816
Yxy	57.6181, 0.3422, 0.3348
Android (android.graphics.Color)	4292919740 (0xFFE0C1BC)
YUV	201.6990, -6.7536, 19.5580
Hunter-Lab	75.9066, 5.6418, 9.7101

Details

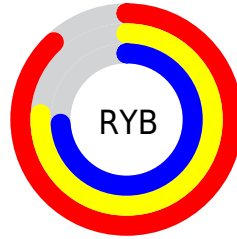
The XYZ color **58.8875, 57.6181, 55.5946** is a light color, and the websafe version is hex **FFCCCC**. A complement of this color would be **59.5245, 66.7345, 80.2651**, and the grayscale version is **55.9848, 58.9003, 64.1425**.

A 20% lighter version of the original color is **91.4448, 95.5430, 99.2099**, and **29.7542, 28.5393, 26.8621** is the 20% darker color. If you saturate the color by 10%, you get **52.6689, 48.7497, 42.5186**, and if you desaturate by 10%, it is **66.0401, 67.7536, 70.8323**.

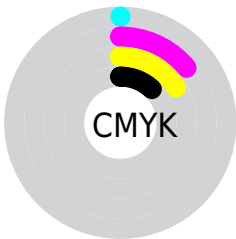
Distribution



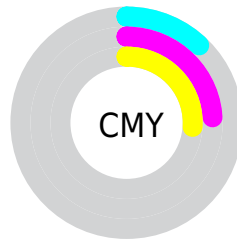
- Red (88%)
- Green (76%)
- Blue (74%)



- Red (88%)
- Yellow (76%)
- Blue (74%)



- Cyan (0%)
- Magenta (14%)
- Yellow (16%)
- Black (12%)



- Cyan (12%)
- Magenta (24%)
- Yellow (26%)

Brightness & Saturation Gradients

These gradients show how the XYZ color 58.8875, 57.6181, 55.5946 changes by changing the brightness by 10 percent. The first figure shows a shift by +10% for each color and the second figure -10%.

Similar to the brightness gradients but the following saturation gradients show a change of the XYZ color 58.8875, 57.6181, 55.5946 by changing the saturation by 10% instead.

■ 58.8875, 57.6181,
55.5946

■ 58.8875, 57.6181,
55.5946

410.3856,
415.7614, 425.5072

■ 42.7686, 41.5017,
39.4762

■ 102.3297,
101.3665, 99.8915

■ 29.8973, 28.7113,
26.8197

130.3837,
129.7673, 128.9070

■ 19.9083, 18.8625,
17.2066

163.1468,
163.0317, 163.0586

■ 12.4363, 11.5710,
10.2184

200.9843,
201.5441, 202.7649

■ 7.1159, 6.4523,
5.4365

244.2615,
245.6889, 248.4443

■ 3.5816, 3.1220,
2.4424

293.3440,

■ 1.4683, 1.1958,

295.8504, 300.5155

0.8094

348.5969,
352.4131, 359.3970

■ 0.3041, 0.0582,
0.0000

■ 0.0000, 0.0000,
0.0000

■ 58.8875, 57.6181,
55.5946

■ 58.8875, 57.6181,
55.5946

■ 52.6689, 48.7497,
42.5186

■ 66.0401, 67.7536,
70.8323

■ 47.3411, 41.0911,
31.5028

■ 74.1582, 79.1952,
88.3198

■ 42.8641, 34.5920,
22.4430

■ 83.2454, 91.9769,
107.9736

■ 39.1936, 29.1955,
15.2244

■ 84.5506, 94.5874,
108.4086

■ 36.2807, 24.8402,
9.7201

■ 34.0713, 21.4582,
5.7872

■ 32.5038, 18.9737,
3.2594

■ 31.5051, 17.2991,
1.9313

■ 31.2342, 16.8346,
1.6032

Harmonies

Analogous

The Analogous color harmony consists of three colors that are next to each other on the color wheel.



59.6870, 57.6181, 62.0651



58.8875, 57.6181, 55.5946



56.9809, 57.6181, 51.3121

Triad

The Triadic color harmony groups three colors that are evenly spaced from another and form a triangle on the color wheel.



58.8875, 57.6181, 55.5946



50.6146, 57.6181, 56.6780



54.9998, 57.6181, 77.4529

Complementary

The Complementary color scheme is a pair of colors which are on the opposite of each other on the color wheel.



58.8875, 57.6181, 55.5946



59.5245, 66.7345, 80.2651

Split Complementary

Split-complementary colors differ from the complementary color scheme. The scheme consists of three colors, the original color and two neighbors of the complement color.



52.6059, 57.6181, 75.7416



58.8875, 57.6181, 55.5946



50.1200, 57.6181, 63.4124

Square

The Square scheme is like the rectangle color scheme, but the four colors are evenly spaced on the color wheel.



58.8875, 57.6181, 55.5946



52.2103, 57.6181, 51.9035



50.8382, 57.6181, 70.4649



57.4003, 57.6181, 74.9804

Rectangle

The Rectangle color scheme consists of four colors that form a rectangle on the color wheel.



58.8875, 57.6181, 55.5946



55.3652, 57.6181, 50.0914



50.8382, 57.6181, 70.4649



54.1677, 57.6181, 77.3481

Sweetspot

The Sweet Spot groups the original color and five complimentary colors.



58.8891, 57.6207, 55.5958



89.6620, 92.4007, 97.3108



61.5368, 56.9394, 74.9035



19.0350, 19.5567, 20.4932



0.0000, 0.0000, 0.0000



20.3446, 21.4041, 23.3091

Same Dimension

The Same Dimension uses a secret algorithm to generate beautiful new colors.



58.8891, 57.6207, 55.5958



76.3136, 73.4751, 68.9034



63.0627, 65.9679, 56.9870



13.8601, 14.0062, 14.2797



18.2294, 9.8966, 0.9494



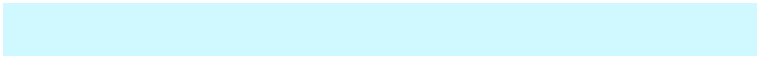
1.3134, 0.7856, 0.0824

Inverse Universe

The Inverse Universe completely reimagines the original color for something new.



59.5245, 66.7345, 80.2651



77.3055, 87.7185, 107.4647



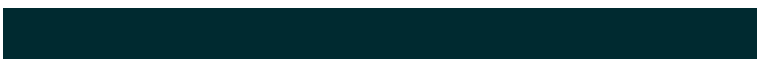
55.1275, 57.9405, 78.7995



13.9456, 15.2304, 17.5924



18.9773, 25.4242, 44.9555



1.3607, 1.8529, 3.1312

Previews

White Background



This preview shows how the XYZ color 58.8875, 57.6181, 55.5946 looks on a white background.

Color Contrast Check

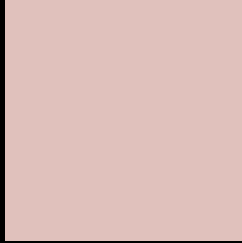
Large Text (above 18pt) WCAG AA × Fail

Any Text WCAG AA × Fail

Large Text (above 18pt) WCAG AAA × Fail

Any Text WCAG AAA × Fail

Black Background



This preview shows how the XYZ color 58.8875, 57.6181, 55.5946 looks on a black background.

Color Contrast Check

Large Text (above 18pt) WCAG AA ✓ Pass

Any Text WCAG AA ✓ Pass

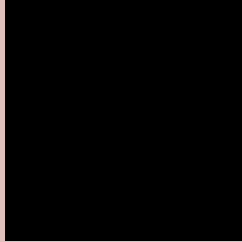
Large Text (above 18pt) WCAG AAA ✓ Pass

Any Text WCAG AAA ✓ Pass

If you want to check with other color combinations, try the [Color Contrast Checker](#).

XYZ 58.8875, 57.6181, 55.5946

Background



This preview shows how black text looks on a background with the XYZ color 58.8875, 57.6181, 55.5946.

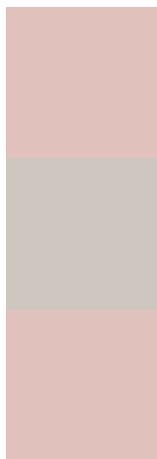


This preview shows how white text looks on a background with the XYZ color 58.8875, 57.6181,

Color Blindness Simulation

Color vision deficiency is a very complex topic, and I could not describe the different causes any better than Wikipedia does, so if you want to learn more, you should check out their [article about color blindness](#).

Dichromacy



Original Color

58.8875, 57.6181, 55.5946

Protanopia

55.2810, 57.7302, 57.5196

Deuteranopia

58.8875, 57.6181, 55.5946



Tritanopia

60.7969, 57.4034, 65.6332

Trichromacy



Original Color

58.8875, 57.6181, 55.5946

Protanomaly

56.7011, 57.7963, 56.8825

Deuteranomaly

58.8875, 57.6181, 55.5946

Tritanomaly

59.9909, 57.3927, 61.9489

Monochromacy



Original Color

58.8875, 57.6181, 55.5946

Achromatopsia

56.1383, 59.0619, 64.3184

Achromatomaly

57.0798, 58.5797, 61.1219

CSS Examples

Text

The CSS property to change the color of the text to XYZ 58.8875, 57.6181, 55.5946 is called "color". The color property can be set on classes, ids or directly on the HTML element.

This example shows how text in the color `rgb(224, 193, 188)` looks like.

```
.text, #text, p{  
    color:rgb(224, 193, 188)  
}
```

If you want to add a text shadow in that color use the text-shadow property, you can generate a text shadow directly with our [CSS Text Shadow Generator](#).

Here you see how black text with a 4 pixel rgb(224, 193, 188) colored shadow looks like.

```
.shadow{ text-shadow: 4px 4px 2px rgb(224, 193, 188) }
```

Border

The CSS property to change the border of an element to XYZ 58.8875, 57.6181, 55.5946 is called "border". The border property can be set on classes, ids or directly on the HTML element.

This example shows the color as border, it can be applied via the CSS property "border" or "border-color".

```
.border, #border, table{ border:4px solid rgb(224, 193, 188) }
```


If only the border color should be changed use the property `border-color`.

```
.border{ border-color:rgb(224, 193, 188) }
```

If you want to add a box shadow in that color use:

Here you see how a box with a 4 pixel `rgb(224, 193, 188)` colored shadow looks like.

```
.boxshadow{ -moz-box-shadow:4px 4px 4px  
4px rgb(224, 193, 188); -webkit-box-  
shadow:4px 4px 4px 4px rgb(224, 193, 188);  
box-shadow:4px 4px 4px 4px rgb(224, 193,  
188) }
```

Background

The CSS property to change the background color of an element to XYZ 58.8875, 57.6181, 55.5946 is called "background". The background property can be set on classes, ids or directly on the HTML element.

```
.background, #background, body{  
background: rgb(224, 193, 188) }
```

If only the background color should be changed can be used:

```
.background{ background-color: rgb(224,  
193, 188) }
```

This example shows the color as background, it is applied via the CSS property "background".

To optimize and compress your CSS code, you can use our [online CSS compressor and optimizer](#) based on csstidy. If you want to create a linear or radial gradient as background or border, check our [CSS Gradient Generator](#).

Hey! You found this booklet interesting? Support Converting Colors with the new Membership Option!

The pro membership hides all ads, plus gives you double the colors in the color bucket, and more awesome pro features!

[Learn more, Memberships starting at \\$2.50/m!](#)

**Follow me
on Twitter!**

@ConvertingColor