

Converting Colors

XYZ(58.9428, 56.6813, 57.5318)

Have a look what the booklet for
XYZ(58.9428, 56.6813, 57.5318)
contains.

XYZ(58.9792, 56.6402, 57.6933)	3
<i>Conversions</i>	4
<i>Details</i>	6
<i>Harmonies</i>	12
<i>Previews</i>	24
<i>Color Blindness Simulation</i>	28
<i>CSS Examples</i>	31

Color

**XYZ(58.9792, 56.6402,
57.6933)**

Conversions

Conversions Part 1

Format	Color
Hex	E1BEC0
RGB	225, 190, 192
RGB Percent	88%, 75%, 75%
CMY	0.1176, 0.2549, 0.2471
CMYK	0.00, 0.16, 0.15, 0.12
HSL	357°, 37%, 81%
HSV	357°, 16%, 88%
XYZ	58.9792, 56.6402, 57.6933
YIQ	200.6930, 20.2180, 8.0420

Conversions

Conversions Part 2

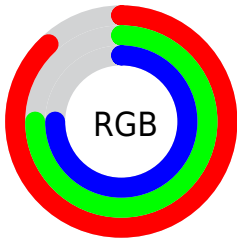
Format	Color
R _Y B	225, 190, 192
Decimal	14794432
CIE Lab	79.98, 12.78, 3.64
CIE LCh	80, 13.286, 15.889
Yxy	56.6402, 0.3403, 0.3268
Android (android.graphics.Color)	4292984512 (0xFFE1BEC0)
YUV	200.6930, -4.2856, 21.3172
Hunter-Lab	75.2597, 8.1817, 7.2307

Details

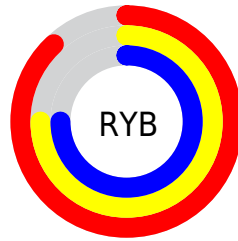
The XYZ color **58.9792, 56.6402, 57.6933** is a light color, and the websafe version is hex **FFCCCC**. A complement of this color would be **61.4819, 70.1267, 80.1107**, and the grayscale version is **55.3455, 58.2278, 63.4100**.

A 20% lighter version of the original color is **91.1390, 93.9488, 102.1373**, and **29.9680, 28.1904, 28.2879** is the 20% darker color. If you saturate the color by 10%, you get **52.2932, 46.7627, 44.6905**, and if you desaturate by 10%, it is **66.7596, 68.1629, 72.7342**.

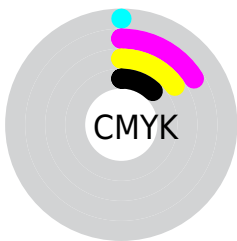
Distribution



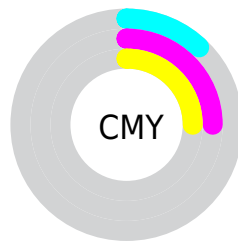
- Red (88%)
- Green (75%)
- Blue (75%)



- Red (88%)
- Yellow (75%)
- Blue (75%)



- Cyan (0%)
- Magenta (16%)
- Yellow (15%)
- Black (12%)




- Cyan (12%)
- Magenta (25%)
- Yellow (25%)

Brightness & Saturation Gradients


These gradients show how the XYZ color 58.9792, 56.6402, 57.6933 changes by changing the brightness by 10 percent. The first figure shows a shift by +10% for each color and the second figure -10%.


Similar to the brightness gradients but the following saturation gradients show a change of the XYZ color 58.9792, 56.6402, 57.6933 by changing the saturation by 10% instead.


 58.9792, 56.6402,
57.6933

 58.9792, 56.6402,
57.6933


410.7201,
412.0997, 433.6084

 42.8427, 40.7164,
41.1491


 102.4622, 99.9400,
102.9865

 29.9557, 28.0976,
28.1150


130.5395,
128.0848, 132.5725

 19.9529, 18.3992,
18.1726


163.3276,
161.0721, 167.3428

 12.4688, 11.2370,
10.9032

201.1921,
199.2863, 207.7160

 7.1383, 6.2265,
5.8884

244.4982,
243.1118, 254.1106

 3.5958, 2.9833,
2.7097

293.6114,

 1.4761, 1.1230,

292.9329, 306.9452

0.9483

348.8969,
349.1341, 366.6383

■ 0.3095, 0.0000,
0.0000

■ 0.0000, 0.0000,
0.0000

■ 58.9792, 56.6402,
57.6933

■ 58.9792, 56.6402,
57.6933

■ 52.2932, 46.7627,
44.6905

■ 66.7596, 68.1629,
72.7342

■ 46.6480, 38.4482,
33.6347

■ 75.6753, 81.3930,
89.8918

■ 41.9927, 31.6189,
24.4333

■ 84.8616, 94.7477,
108.4232

■ 38.2702, 26.1874,
16.9846

■ 35.4173, 22.0569,
11.1774

■ 33.3635, 19.1187,
6.8875

■ 32.0268, 17.2461,
3.9732

■ 31.3076, 16.2838,
2.2656

■ 31.1232, 16.0363,
1.8301

Harmonies

Analogous

The Analogous color harmony consists of three colors that are next to each other on the color wheel.



59.0235, 56.6402, 65.3644



58.9792, 56.6402, 57.6933



57.5264, 56.6402, 51.6088

Triad

The Triadic color harmony groups three colors that are evenly spaced from another and form a triangle on the color wheel.



58.9792, 56.6402, 57.6933



50.1959, 56.6402, 51.8990



52.5802, 56.6402, 77.2291

Complementary

The Complementary color scheme is a pair of colors which are on the opposite of each other on the color wheel.



58.9792, 56.6402, 57.6933



61.4819, 70.1267, 80.1107

Split Complementary

Split-complementary colors differ from the complementary color scheme. The scheme consists of three colors, the original color and two neighbors of the complement color.



50.3046, 56.6402, 72.9640



58.9792, 56.6402, 57.6933



48.9595, 56.6402, 58.1205

Square

The Square scheme is like the rectangle color scheme, but the four colors are evenly spaced on the color wheel.



58.9792, 56.6402, 57.6933



52.4272, 56.6402, 48.4592



48.9986, 56.6402, 65.8286



55.2674, 56.6402, 77.0905

Rectangle

The Rectangle color scheme consists of four colors that form a rectangle on the color wheel.



58.9792, 56.6402, 57.6933



55.9816, 56.6402, 49.0820



48.9986, 56.6402, 65.8286



51.7437, 56.6402, 76.2484

Sweetspot

The Sweet Spot groups the original color and five complimentary colors.



58.9808, 56.6427, 57.6945



89.2408, 91.3829, 97.7111



62.3345, 57.9008, 79.1253



18.9331, 19.3104, 20.5900



0.0000, 0.0000, 0.0000



20.3446, 21.4041, 23.3091

Same Dimension

The Same Dimension uses a secret algorithm to generate beautiful new colors.



58.9808, 56.6427, 57.6945



74.9914, 70.2869, 70.1395



62.2184, 63.4697, 57.6899



13.7388, 13.7131, 14.3946



17.9482, 9.2463, 1.1269



1.2554, 0.6454, 0.1378

Inverse Universe

The Inverse Universe completely reimagines the original color for something new.



58.9808, 56.6427, 57.6945



74.9914, 70.2869, 70.1395



57.8334, 62.3964, 80.2303



13.7388, 13.7131, 14.3946



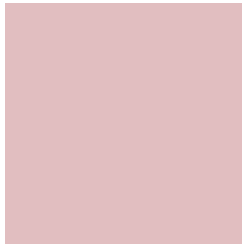
17.9482, 9.2463, 1.1269



1.2554, 0.6454, 0.1378

Previews

White Background



This preview shows how the XYZ color 58.9792, 56.6402, 57.6933 looks on a white background.

Color Contrast Check

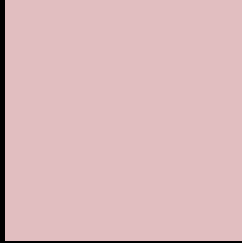
Large Text (above 18pt) WCAG AA × Fail

Any Text WCAG AA × Fail

Large Text (above 18pt) WCAG AAA × Fail

Any Text WCAG AAA × Fail

Black Background



This preview shows how the XYZ color 58.9792, 56.6402, 57.6933 looks on a black background.

Color Contrast Check

Large Text (above 18pt) WCAG AA ✓ Pass

Any Text WCAG AA ✓ Pass

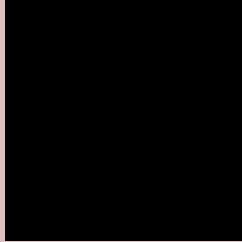
Large Text (above 18pt) WCAG AAA ✓ Pass

Any Text WCAG AAA ✓ Pass

If you want to check with other color combinations, try the [Color Contrast Checker](#).

XYZ 58.9792, 56.6402, 57.6933

Background



This preview shows how black text looks on a background with the XYZ color 58.9792, 56.6402, 57.6933.



This preview shows how white text looks on a background with the XYZ color 58.9792, 56.6402,

Color Blindness Simulation

Color vision deficiency is a very complex topic, and I could not describe the different causes any better than Wikipedia does, so if you want to learn more, you should check out their [article about color blindness](#).

Dichromacy



Original Color

58.9792, 56.6402, 57.6933

Protanopia

54.5150, 56.9302, 60.3399

Deuteranopia

57.8793, 56.7207, 57.7668



Tritanopia

60.1267, 56.4470, 64.2262

Trichromacy



Original Color

58.9792, 56.6402, 57.6933

Protanomaly

55.9438, 56.6720, 59.6200

Deuteranomaly

58.2694, 56.5970, 57.7223

Tritanomaly

59.8704, 56.6875, 61.8191

Monochromacy



Original Color

58.9792, 56.6402, 57.6933

Achromatopsia

55.5167, 58.4078, 63.6061

Achromatomaly

56.7376, 57.7114, 61.5751

CSS Examples

Text

The CSS property to change the color of the text to XYZ 58.9792, 56.6402, 57.6933 is called "color". The color property can be set on classes, ids or directly on the HTML element.

This example shows how text in the color `rgb(225, 190, 192)` looks like.

```
.text, #text, p{  
    color:rgb(225, 190, 192)  
}
```

If you want to add a text shadow in that color use the text-shadow property, you can generate a text shadow directly with our [CSS Text Shadow Generator](#).

Here you see how black text with a 4 pixel rgb(225, 190, 192) colored shadow looks like.

```
.shadow{ text-shadow: 4px 4px 2px rgb(225, 190, 192) }
```

Border

The CSS property to change the border of an element to XYZ 58.9792, 56.6402, 57.6933 is called "border". The border property can be set on classes, ids or directly on the HTML element.

This example shows the color as border, it can be applied via the CSS property "border" or "border-color".

```
.border, #border, table{ border:4px solid rgb(225, 190, 192) }
```


If only the border color should be changed use the property `border-color`.

```
.border{ border-color:rgb(225, 190, 192) }
```

If you want to add a box shadow in that color use:

Here you see how a box with a 4 pixel `rgb(225, 190, 192)` colored shadow looks like.

```
.boxshadow{ -moz-box-shadow:4px 4px 4px  
4px rgb(225, 190, 192); -webkit-box-  
shadow:4px 4px 4px 4px rgb(225, 190, 192);  
box-shadow:4px 4px 4px 4px rgb(225, 190,  
192) }
```

Background

The CSS property to change the background color of an element to XYZ 58.9792, 56.6402, 57.6933 is called "background". The background property can be set on classes, ids or directly on the HTML element.

```
.background, #background, body{  
background: rgb(225, 190, 192) }
```

If only the background color should be changed can be used:

```
.background{ background-color: rgb(225,  
190, 192) }
```

This example shows the color as background, it is applied via the CSS property "background".

To optimize and compress your CSS code, you can use our [online CSS compressor and optimizer](#) based on csstidy. If you want to create a linear or radial gradient as background or border, check our [CSS Gradient Generator](#).

Hey! You found this booklet interesting? Support Converting Colors with the new Membership Option!

The pro membership hides all ads, plus gives you double the colors in the color bucket, and more awesome pro features!

[Learn more, Memberships starting at \\$2.50/m!](#)

**Follow me
on Twitter!**

@ConvertingColor