

Converting Colors

XYZ(58.9723, 57.5067, 62.5843)

Have a look what the booklet for
XYZ(58.9723, 57.5067, 62.5843)
contains.

XYZ(59.0105, 57.5257, 62.6370)	3
<i>Conversions</i>	4
<i>Details</i>	6
<i>Harmonies</i>	12
<i>Previews</i>	24
<i>Color Blindness Simulation</i>	28
<i>CSS Examples</i>	31

Color

**XYZ(59.0105, 57.5257,
62.6370)**

Conversions

Conversions Part 1

Format	Color
Hex	DCC1C8
RGB	220, 193, 200
RGB Percent	86%, 76%, 78%
CMY	0.1373, 0.2431, 0.2157
CMYK	0.00, 0.12, 0.09, 0.14
HSL	344°, 28%, 81%
HSV	344°, 12%, 86%
XYZ	59.0105, 57.5257, 62.6370
YIQ	201.8710, 13.8450, 7.9010

Conversions

Conversions Part 2

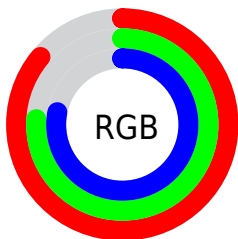
Format	Color
R _Y B	220, 193, 200
Decimal	14467528
CIE Lab	80.47, 10.71, -0.00
CIE LCh	80, 10.709, 359.994
Yxy	57.5257, 0.3293, 0.3211
Android (android.graphics.Color)	4292657608 (0xFFDCC1C8)
YUV	201.8710, -0.9224, 15.8991
Hunter-Lab	75.8457, 6.1490, 4.1275

Details

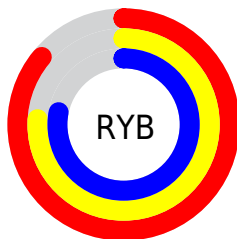
The XYZ color **59.0105, 57.5257, 62.6370** is a light color, and the websafe version is hex **CCCCCC**. A complement of this color would be **59.5980, 67.3294, 72.8088**, and the grayscale version is **56.0595, 58.9789, 64.2281**.

A 20% lighter version of the original color is **93.1657, 96.2314, 108.2719**, and **29.9380, 28.5399, 31.1250** is the 20% darker color. If you saturate the color by 10%, you get **52.7000, 47.7918, 51.6314**, and if you desaturate by 10%, it is **66.2508, 68.7928, 74.9558**.

Distribution



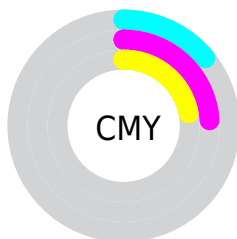
- Red (86%)
- Green (76%)
- Blue (78%)



- Red (86%)
- Yellow (76%)
- Blue (78%)



- Cyan (0%)
- Magenta (12%)
- Yellow (9%)
- Black (14%)



- Cyan (14%)
- Magenta (24%)
- Yellow (22%)

Brightness & Saturation Gradients

These gradients show how the XYZ color 59.0105, 57.5257, 62.6370 changes by changing the brightness by 10 percent. The first figure shows a shift by +10% for each color and the second figure -10%.

Similar to the brightness gradients but the following saturation gradients show a change of the XYZ color 59.0105, 57.5257, 62.6370 by changing the saturation by 10% instead.

■ 59.0105, 57.5257,
62.6370

■ 59.0105, 57.5257,
62.6370

410.8343,
415.4163, 452.3225

■ 42.8680, 41.4275,
45.1085

■ 102.5075,
101.2318, 110.2262

■ 29.9756, 28.6532,
31.1993

130.5926,
129.6085, 141.1239

■ 19.9681, 18.8187,
20.4909

163.3893,
162.8468, 177.3151

■ 12.4800, 11.5393,
12.5648

201.2630,
201.3311, 219.2184

■ 7.1459, 6.4308,
7.0024

244.5790,
245.4458, 267.2522

■ 3.6007, 3.1088,
3.3851


293.7026,


■ 1.4788, 1.1888,


295.5753, 321.8351


1.2945

348.9993,
352.1040, 383.3857


 0.3113, 0.0525,
0.0573

 0.0000, 0.0000,
0.0000


 59.0105, 57.5257,
62.6370

 59.0105, 57.5257,
62.6370


 52.7000, 47.7918,
51.6314

 66.2508, 68.7928,
74.9558


 47.2762, 39.5173,
41.8913

 74.4520, 81.6476,
88.6260

 42.7000, 32.6336,
33.3715

 82.3584, 93.5689,
103.2584

 38.9272, 27.0638,
26.0226

 83.3255, 93.9558,
108.3513

■ 35.9094, 22.7232,
19.7917

■ 33.5932, 19.5173,
14.6216

■ 31.9173, 17.3376,
10.4496

■ 30.8093, 16.0542,
7.2054

■ 30.2544, 15.5114,
5.2723

Harmonies

Analogous

The Analogous color harmony consists of three colors that are next to each other on the color wheel.



58.4168, 57.5257, 68.8828



59.0105, 57.5257, 62.6370



58.4173, 57.5257, 56.7803

Triad

The Triadic color harmony groups three colors that are evenly spaced from another and form a triangle on the color wheel.



59.0105, 57.5257, 62.6370



52.5918, 57.5257, 52.7312



52.5910, 57.5257, 73.7073

Complementary

The Complementary color scheme is a pair of colors which are on the opposite of each other on the color wheel.



59.0105, 57.5257, 62.6370



59.5980, 67.3294, 72.8088

Split Complementary

Split-complementary colors differ from the complementary color scheme. The scheme consists of three colors, the original color and two neighbors of the complement color.



51.0989, 57.5257, 68.8804



59.0105, 57.5257, 62.6370



51.0993, 57.5257, 56.7782

Square

The Square scheme is like the rectangle color scheme, but the four colors are evenly spaced on the color wheel.



59.0105, 57.5257, 62.6370



54.6769, 57.5257, 51.2998



50.5600, 57.5257, 62.6344



54.6760, 57.5257, 75.5295

Rectangle

The Rectangle color scheme consists of four colors that form a rectangle on the color wheel.



59.0105, 57.5257, 62.6370



57.4373, 57.5257, 53.8183



50.5600, 57.5257, 62.6344



52.0055, 57.5257, 72.3671

Sweetspot

The Sweet Spot groups the original color and five complimentary colors.



59.0121, 57.5282, 62.6382



90.6890, 93.1867, 101.5619



59.3727, 57.4262, 75.6659



19.2408, 19.6801, 21.4504



0.0000, 0.0000, 0.0000



20.3446, 21.4041, 23.3091

Same Dimension

The Same Dimension uses a secret algorithm to generate beautiful new colors.



59.0121, 57.5282, 62.6382



79.8071, 76.2844, 82.9473



59.6352, 60.0533, 58.9035



13.1939, 13.1066, 14.2821



17.7946, 9.1189, 3.2986



1.1879, 0.6048, 0.3986

Inverse Universe

The Inverse Universe completely reimagines the original color for something new.



59.0121, 57.5282, 62.6382



79.8071, 76.2844, 82.9473



58.8833, 64.4479, 77.0471



13.1939, 13.1066, 14.2821



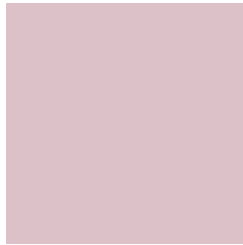
17.7946, 9.1189, 3.2986



1.1879, 0.6048, 0.3986

Previews

White Background



This preview shows how the XYZ color 59.0105, 57.5257, 62.6370 looks on a white background.

Color Contrast Check

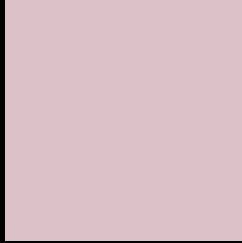
Large Text (above 18pt) WCAG AA × Fail

Any Text WCAG AA × Fail

Large Text (above 18pt) WCAG AAA × Fail

Any Text WCAG AAA × Fail

Black Background



This preview shows how the XYZ color 59.0105, 57.5257, 62.6370 looks on a black background.

Color Contrast Check

Large Text (above 18pt) WCAG AA ✓ Pass

Any Text WCAG AA ✓ Pass

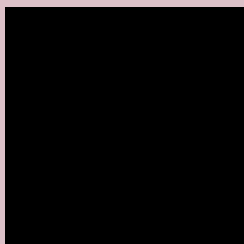
Large Text (above 18pt) WCAG AAA ✓ Pass

Any Text WCAG AAA ✓ Pass

If you want to check with other color combinations, try the [Color Contrast Checker](#).

XYZ 59.0105, 57.5257, 62.6370

Background



This preview shows how black text looks on a background with the XYZ color 59.0105, 57.5257, 62.6370.



This preview shows how white text looks on a background with the XYZ color 59.0105, 57.5257,

Color Blindness Simulation

Color vision deficiency is a very complex topic, and I could not describe the different causes any better than Wikipedia does, so if you want to learn more, you should check out their [article about color blindness](#).

Dichromacy



Original Color

59.0105, 57.5257, 62.6370

Protanopia

55.5600, 57.7152, 64.7117

Deuteranopia

58.7087, 57.3701, 62.6228



Tritanopia

59.9309, 57.5764, 66.9861

Trichromacy



Original Color

59.0105, 57.5257, 62.6370

Protanomaly

56.9214, 57.7521, 64.0243

Deuteranomaly

58.7087, 57.3701, 62.6228

Tritanomaly

59.5675, 57.4311, 65.0725

Monochromacy



Original Color

59.0105, 57.5257, 62.6370

Achromatopsia

56.1383, 59.0619, 64.3184

Achromatomaly

57.2605, 58.6192, 63.5550

CSS Examples

Text

The CSS property to change the color of the text to XYZ 59.0105, 57.5257, 62.6370 is called "color". The color property can be set on classes, ids or directly on the HTML element.

This example shows how text in the color `rgb(220, 193, 200)` looks like.

```
.text, #text, p{  
    color:rgb(220, 193, 200)  
}
```

If you want to add a text shadow in that color use the text-shadow property, you can generate a text shadow directly with our [CSS Text Shadow Generator](#).

Here you see how black text with a 4 pixel rgb(220, 193, 200) colored shadow looks like.

```
.shadow{ text-shadow: 4px 4px 2px rgb(220, 193, 200) }
```

Border

The CSS property to change the border of an element to XYZ 59.0105, 57.5257, 62.6370 is called "border". The border property can be set on classes, ids or directly on the HTML element.

This example shows the color as border, it can be applied via the CSS property "border" or "border-color".

```
.border, #border, table{ border:4px solid rgb(220, 193, 200) }
```


If only the border color should be changed use the property `border-color`.

```
.border{ border-color:rgb(220, 193, 200) }
```

If you want to add a box shadow in that color use:

Here you see how a box with a 4 pixel `rgb(220, 193, 200)` colored shadow looks like.

```
.boxshadow{ -moz-box-shadow:4px 4px 4px  
4px rgb(220, 193, 200); -webkit-box-  
shadow:4px 4px 4px 4px rgb(220, 193, 200);  
box-shadow:4px 4px 4px 4px rgb(220, 193,  
200) }
```

Background

The CSS property to change the background color of an element to XYZ 59.0105, 57.5257, 62.6370 is called "background". The background property can be set on classes, ids or directly on the HTML element.

```
.background, #background, body{  
background: rgb(220, 193, 200) }
```

If only the background color should be changed can be used:

```
.background{ background-color: rgb(220,  
193, 200) }
```

This example shows the color as background, it is applied via the CSS property "background".

To optimize and compress your CSS code, you can use our [online CSS compressor and optimizer](#) based on csstidy. If you want to create a linear or radial gradient as background or border, check our [CSS Gradient Generator](#).

Hey! You found this booklet interesting? Support Converting Colors with the new Membership Option!

The pro membership hides all ads, plus gives you double the colors in the color bucket, and more awesome pro features!

[Learn more, Memberships starting at \\$2.50/m!](#)

**Follow me
on Twitter!**

@ConvertingColor