

Converting Colors

XYZ(59.0444, 55.3798, 50.1085)

Have a look what the booklet for
XYZ(59.0444, 55.3798, 50.1085)
contains.

XYZ(59.0899, 55.2762, 50.2028)	3
<i>Conversions</i>	4
<i>Details</i>	6
<i>Harmonies</i>	12
<i>Previews</i>	24
<i>Color Blindness Simulation</i>	28
<i>CSS Examples</i>	31

Color

**XYZ(59.0899, 55.2762,
50.2028)**

Conversions

Conversions Part 1

Format	Color
Hex	E9B9B3
RGB	233, 185, 179
RGB Percent	91%, 73%, 70%
CMY	0.0863, 0.2745, 0.2980
CMYK	0.00, 0.21, 0.23, 0.09
HSL	7°, 55%, 81%
HSV	7°, 23%, 91%
XYZ	59.0899, 55.2762, 50.2028
YIQ	198.6680, 30.5340, 8.3100

Conversions

Conversions Part 2

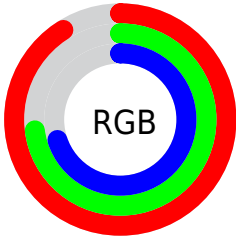
Format	Color
R _Y B	233, 186, 179
Decimal	15317427
CIE Lab	79.20, 16.39, 9.63
CIE LCh	79, 19.012, 30.431
Yxy	55.2762, 0.3591, 0.3359
Android (android.graphics.Color)	4293507507 (0xFFE9B9B3)
YUV	198.6680, -9.6963, 30.1092
Hunter-Lab	74.3480, 11.7584, 12.0085

Details

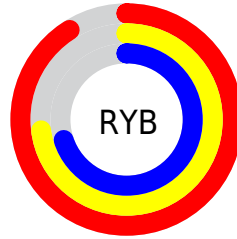
The XYZ color **59.0899, 55.2762, 50.2028** is a light color, and the websafe version is hex **FFCCCC**. A complement of this color would be **60.7668, 70.4031, 87.4776**, and the grayscale version is **54.1288, 56.9477, 62.0160**.

A 20% lighter version of the original color is **87.6907, 90.1688, 91.3798**, and **29.9217, 27.2390, 23.4193** is the 20% darker color. If you saturate the color by 10%, you get **52.9085, 46.3711, 37.4820**, and if you desaturate by 10%, it is **66.3036, 65.6077, 65.2334**.

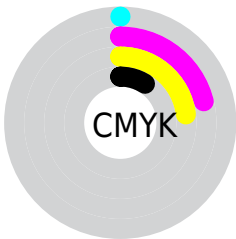
Distribution



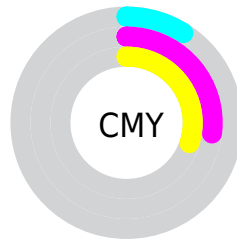
- Red (91%)
- Green (73%)
- Blue (70%)



- Red (91%)
- Yellow (73%)
- Blue (70%)



- Cyan (0%)
- Magenta (21%)
- Yellow (23%)
- Black (9%)



- Cyan (9%)
- Magenta (27%)
- Yellow (30%)

Brightness & Saturation Gradients

These gradients show how the XYZ color 59.0899, 55.2762, 50.2028 changes by changing the brightness by 10 percent. The first figure shows a shift by +10% for each color and the second figure -10%.

Similar to the brightness gradients but the following saturation gradients show a change of the XYZ color 59.0899, 55.2762, 50.2028 by changing the saturation by 10% instead.

■ 59.0899, 55.2762,
50.2028

■ 59.0899, 55.2762,
50.2028

411.1237,
406.9581, 404.2163

■ 42.9321, 39.6229,
35.2023

■ 102.6222, 97.9455,
91.8747

■ 30.0262, 27.2446,
23.5339

130.7274,
125.7303, 119.3831

■ 20.0066, 17.7570,
14.7792

163.5459,
158.3277, 151.8979

■ 12.5081, 10.7757,
8.5197

201.4429,
196.1222, 189.8376

■ 7.1654, 5.9162,
4.3368

244.7838,
239.4981, 233.6207

■ 3.6130, 2.7942,
1.8118

293.9340,

■ 1.4856, 1.0253,

288.8397, 283.6658

0.4358

349.2589,
344.5316, 340.3915

■ 0.3160, 0.0000,
0.0000

■ 0.0000, 0.0000,
0.0000

■ 59.0899, 55.2762,
50.2028

■ 59.0899, 55.2762,
50.2028

■ 52.9085, 46.3711,
37.4820

■ 66.3036, 65.6077,
65.2334

■ 47.7076, 38.8224,
26.9530

■ 74.5891, 77.4165,
82.6767

■ 43.4380, 32.5657,
18.4929

■ 83.9895, 90.7603,
102.6337

■ 40.0441, 27.5283,
11.9651

■ 87.4144, 96.0637,
108.5427

■ 37.4644, 23.6304,
7.2164

■ 35.6294, 20.7824,
4.0705

■ 34.4574, 18.8812,
2.3147

■ 33.9718, 18.0584,
1.6951

Harmonies

Analogous

The Analogous color harmony consists of three colors that are next to each other on the color wheel.



60.1843, 55.2762, 60.0294



59.0899, 55.2762, 50.2028



56.2251, 55.2762, 43.7672

Triad

The Triadic color harmony groups three colors that are evenly spaced from another and form a triangle on the color wheel.



59.0899, 55.2762, 50.2028



46.4394, 55.2762, 50.4444



52.5933, 55.2762, 83.6158

Complementary

The Complementary color scheme is a pair of colors which are on the opposite of each other on the color wheel.



59.0899, 55.2762, 50.2028



60.7668, 70.4031, 87.4776

Split Complementary

Split-complementary colors differ from the complementary color scheme. The scheme consists of three colors, the original color and two neighbors of the complement color.



49.0165, 55.2762, 80.2707



59.0899, 55.2762, 50.2028



45.5691, 55.2762, 60.3437

Square

The Square scheme is like the rectangle color scheme, but the four colors are evenly spaced on the color wheel.



59.0899, 55.2762, 50.2028



48.9258, 55.2762, 43.8944



46.4899, 55.2762, 71.4129



56.3246, 55.2762, 80.0805

Rectangle

The Rectangle color scheme consists of four colors that form a rectangle on the color wheel.



59.0899, 55.2762, 50.2028



53.7618, 55.2762, 41.8291



46.4899, 55.2762, 71.4129



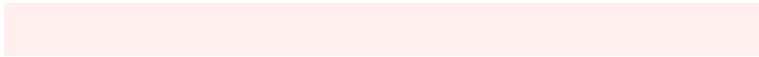
51.3337, 55.2762, 83.2547

Sweetspot

The Sweet Spot groups the original color and five complimentary colors.



59.0914, 55.2787, 50.2039



87.4540, 89.1952, 92.8428



63.6730, 55.1437, 80.3963



18.5853, 18.9013, 19.5910



0.0000, 0.0000, 0.0000



20.3446, 21.4041, 23.3091

Same Dimension

The Same Dimension uses a secret algorithm to generate beautiful new colors.



59.0914, 55.2787, 50.2039



68.5985, 62.2012, 53.5184



65.1352, 67.3664, 52.2185



15.2003, 15.3236, 15.6753



19.3203, 10.3348, 0.9765



1.5619, 0.9011, 0.0916

Inverse Universe

The Inverse Universe completely reimagines the original color for something new.



60.7668, 70.4031, 87.4776



71.0008, 83.9197, 107.0637



54.0925, 57.0546, 85.2528



15.3663, 16.8191, 19.3588



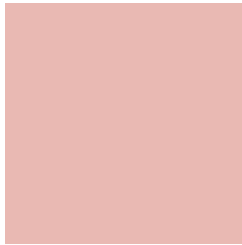
21.0762, 28.7995, 48.1910



1.6958, 2.3431, 3.7978

Previews

White Background



This preview shows how the XYZ color 59.0899, 55.2762, 50.2028 looks on a white background.

Color Contrast Check

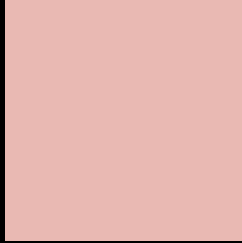
Large Text (above 18pt) WCAG AA × Fail

Any Text WCAG AA × Fail

Large Text (above 18pt) WCAG AAA × Fail

Any Text WCAG AAA × Fail

Black Background



This preview shows how the XYZ color 59.0899, 55.2762, 50.2028 looks on a black background.

Color Contrast Check

Large Text (above 18pt) WCAG AA ✓ Pass

Any Text WCAG AA ✓ Pass

Large Text (above 18pt) WCAG AAA ✓ Pass

Any Text WCAG AAA ✓ Pass

If you want to check with other color combinations, try the [Color Contrast Checker](#).

XYZ 59.0899, 55.2762, 50.2028

Background



This preview shows how black text looks on a background with the XYZ color 59.0899, 55.2762, 50.2028.



This preview shows how white text looks on a background with the XYZ color 59.0899, 55.2762,

Color Blindness Simulation

Color vision deficiency is a very complex topic, and I could not describe the different causes any better than Wikipedia does, so if you want to learn more, you should check out their [article about color blindness](#).

Dichromacy



Original Color

59.0899, 55.2762, 50.2028

Protanopia

53.1255, 55.6791, 53.8461

Deuteranopia

56.3577, 55.1391, 49.7920



Tritanopia

60.9527, 55.1036, 59.6481

Trichromacy



Original Color

59.0899, 55.2762, 50.2028

Protanomaly

55.1284, 55.4143, 52.5902

Deuteranomaly

57.3831, 55.3495, 49.7786

Tritanomaly

60.1594, 55.0771, 56.1754

Monochromacy



Original Color

59.0899, 55.2762, 50.2028

Achromatopsia

54.2854, 57.1125, 62.1955

Achromatomaly

55.6702, 56.2382, 57.7901

CSS Examples

Text

The CSS property to change the color of the text to XYZ 59.0899, 55.2762, 50.2028 is called "color". The color property can be set on classes, ids or directly on the HTML element.

This example shows how text in the color `rgb(233, 185, 179)` looks like.

```
.text, #text, p{  
    color:rgb(233, 185, 179)  
}
```

If you want to add a text shadow in that color use the text-shadow property, you can generate a text shadow directly with our [CSS Text Shadow Generator](#).

Here you see how black text with a 4 pixel rgb(233, 185, 179) colored shadow looks like.

```
.shadow{ text-shadow: 4px 4px 2px rgb(233, 185, 179) }
```

Border

The CSS property to change the border of an element to XYZ 59.0899, 55.2762, 50.2028 is called "border". The border property can be set on classes, ids or directly on the HTML element.

This example shows the color as border, it can be applied via the CSS property "border" or "border-color".

```
.border, #border, table{ border:4px solid rgb(233, 185, 179) }
```


If only the border color should be changed use the property `border-color`.

```
.border{ border-color:rgb(233, 185, 179) }
```

If you want to add a box shadow in that color use:

Here you see how a box with a 4 pixel `rgb(233, 185, 179)` colored shadow looks like.

```
.boxshadow{ -moz-box-shadow:4px 4px 4px  
4px rgb(233, 185, 179); -webkit-box-  
shadow:4px 4px 4px 4px rgb(233, 185, 179);  
box-shadow:4px 4px 4px 4px rgb(233, 185,  
179) }
```

Background

The CSS property to change the background color of an element to XYZ 59.0899, 55.2762, 50.2028 is called "background". The background property can be set on classes, ids or directly on the HTML element.

```
.background, #background, body{  
background: rgb(233, 185, 179) }
```

If only the background color should be changed can be used:

```
.background{ background-color: rgb(233,  
185, 179) }
```

This example shows the color as background, it is applied via the CSS property "background".

To optimize and compress your CSS code, you can use our [online CSS compressor and optimizer](#) based on csstidy. If you want to create a linear or radial gradient as background or border, check our [CSS Gradient Generator](#).

Hey! You found this booklet interesting? Support Converting Colors with the new Membership Option!

The pro membership hides all ads, plus gives you double the colors in the color bucket, and more awesome pro features!

[Learn more, Memberships starting at \\$2.50/m!](#)

**Follow me
on Twitter!**

@ConvertingColor