

Converting Colors

XYZ(59.0787, 58.5554, 62.8321)

Have a look what the booklet for
XYZ(59.0787, 58.5554, 62.8321)
contains.

XYZ(59.0787, 58.5554, 62.8321)	3
<i>Conversions</i>	4
<i>Details</i>	6
<i>Harmonies</i>	12
<i>Previews</i>	24
<i>Color Blindness Simulation</i>	28
<i>CSS Examples</i>	31

Color

**XYZ(59.0787, 58.5554,
62.8321)**

Conversions

Conversions Part 1

Format	Color
Hex	DAC4C8
RGB	218, 196, 200
RGB Percent	85%, 77%, 78%
CMY	0.1451, 0.2314, 0.2157
CMYK	0.00, 0.10, 0.08, 0.15
HSL	349°, 23%, 81%
HSV	349°, 10%, 85%
XYZ	59.0787, 58.5554, 62.8321
YIQ	203.0340, 11.8280, 5.9080

Conversions

Conversions Part 2

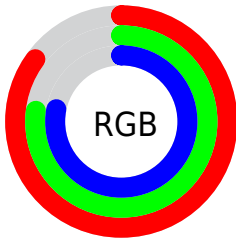
Format	Color
R _Y B	218, 196, 200
Decimal	14337224
CIE Lab	81.05, 8.41, 0.81
CIE LCh	81, 8.446, 5.523
Yxy	58.5554, 0.3274, 0.3245
Android (android.graphics.Color)	4292527304 (0xFFDAC4C8)
YUV	203.0340, -1.4958, 13.1252
Hunter-Lab	76.5215, 3.8989, 4.8818

Details

The XYZ color **59.0787, 58.5554, 62.8321** is a light color, and the websafe version is hex **CCCCCC**. A complement of this color would be **59.9762, 66.7351, 73.3417**, and the grayscale version is **56.7914, 59.7489, 65.0666**.

A 20% lighter version of the original color is **94.4153, 98.7306, 108.6884**, and **29.9656, 29.2079, 31.2525** is the 20% darker color. If you saturate the color by 10%, you get **52.5497, 48.6411, 50.9627**, and if you desaturate by 10%, it is **66.5688, 70.0011, 76.2235**.

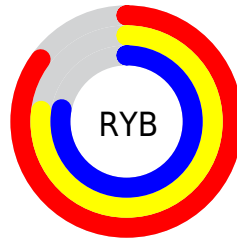
Distribution



Red (85%)

Green (77%)

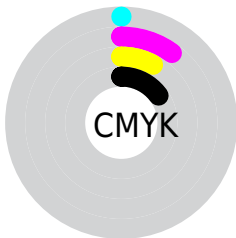
Blue (78%)



Red (85%)

Yellow (77%)

Blue (78%)

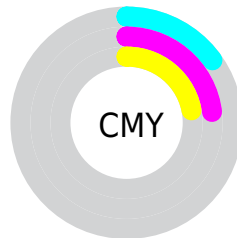


Cyan (0%)

Magenta (10%)

Yellow (8%)

Black (15%)



Cyan (15%)

Magenta (23%)

Yellow (22%)

Brightness & Saturation Gradients

These gradients show how the XYZ color 59.0787, 58.5554, 62.8321 changes by changing the brightness by 10 percent. The first figure shows a shift by +10% for each color and the second figure -10%.

Similar to the brightness gradients but the following saturation gradients show a change of the XYZ color 59.0787, 58.5554, 62.8321 by changing the saturation by 10% instead.

■ 59.0787, 58.5554,
62.8321

■ 59.0787, 58.5554,
62.8321

411.0829,
419.2523, 453.0511

■ 42.9231, 42.2553,
45.2653

102.6060,
102.7312, 110.5105

■ 30.0190, 29.3013,
31.3219

130.7084,
131.3757, 141.4591

■ 20.0012, 19.3088,
20.5836

163.5238,
164.9038, 177.7054

■ 12.5042, 11.8937,
12.6317

201.4175,
203.7000, 219.6679

■ 7.1626, 6.6713,
7.0477

244.7549,
248.1485, 267.7652

■ 3.6113, 3.2574,
3.4130

293.9014,

■ 1.4847, 1.2675,

298.6338, 322.4158

1.3092

349.2223,
355.5403, 384.0382

■ 0.3154, 0.1159,
0.0693

■ 0.0000, 0.0000,
0.0000

■ 59.0787, 58.5554,
62.8321

■ 59.0787, 58.5554,
62.8321

■ 52.5497, 48.6411,
50.9627

■ 66.5688, 70.0011,
76.2235

■ 46.9378, 40.1857,
40.5575

■ 75.0517, 83.0312,
91.1846

■ 42.2031, 33.1226,
31.5604

■ 82.4864, 93.5506,
107.0729

■ 38.3004, 27.3768,
23.9104

■ 82.7238, 93.6456,
108.3231

■ 35.1808, 22.8661,
17.5417

■ 32.7900, 19.4994,
12.3832

■ 31.0667, 17.1726,
8.3563

■ 29.9388, 15.7627,
5.3729

■ 29.2901, 15.0561,
3.3349

Harmonies

Analogous

The Analogous color harmony consists of three colors that are next to each other on the color wheel.



58.7802, 58.5554, 67.8415



59.0787, 58.5554, 62.8321



58.4443, 58.5554, 58.3099

Triad

The Triadic color harmony groups three colors that are evenly spaced from another and form a triangle on the color wheel.



59.0787, 58.5554, 62.8321



53.7192, 58.5554, 56.2171



54.2700, 58.5554, 72.9542

Complementary

The Complementary color scheme is a pair of colors which are on the opposite of each other on the color wheel.



59.0787, 58.5554, 62.8321



59.9762, 66.7351, 73.3417

Split Complementary

Split-complementary colors differ from the complementary color scheme. The scheme consists of three colors, the original color and two neighbors of the complement color.



52.9562, 58.5554, 69.5330



59.0787, 58.5554, 62.8321



52.6429, 58.5554, 59.8396

Square

The Square scheme is like the rectangle color scheme, but the four colors are evenly spaced on the color wheel.



59.0787, 58.5554, 62.8321



55.3313, 58.5554, 54.6213



52.3665, 58.5554, 64.6907



55.9803, 58.5554, 73.8582

Rectangle

The Rectangle color scheme consists of four colors that form a rectangle on the color wheel.



59.0787, 58.5554, 62.8321



57.5855, 58.5554, 56.1242



52.3665, 58.5554, 64.6907



53.7685, 58.5554, 72.0520

Sweetspot

The Sweet Spot groups the original color and five complimentary colors.



59.0803, 58.5580, 62.8334



91.6662, 94.8191, 102.8805



60.1185, 58.8356, 74.5182



19.4314, 20.0063, 21.6837



0.0000, 0.0000, 0.0000



20.3446, 21.4041, 23.3091

Same Dimension

The Same Dimension uses a secret algorithm to generate beautiful new colors.



59.0803, 58.5580, 62.8334



82.2805, 80.4975, 86.0339



60.2271, 61.5893, 60.9413



13.1522, 13.0900, 14.0626



17.5762, 9.0315, 2.1482



1.1679, 0.5968, 0.2931

Inverse Universe

The Inverse Universe completely reimagines the original color for something new.



59.0803, 58.5580, 62.8334



82.2805, 80.4975, 86.0339



58.7245, 63.4048, 75.4737



13.1522, 13.0900, 14.0626



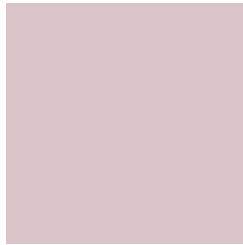
17.5762, 9.0315, 2.1482



1.1679, 0.5968, 0.2931

Previews

White Background



This preview shows how the XYZ color 59.0787, 58.5554, 62.8321 looks on a white background.

Color Contrast Check

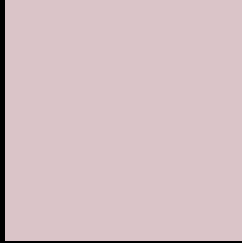
Large Text (above 18pt) WCAG AA × Fail

Any Text WCAG AA × Fail

Large Text (above 18pt) WCAG AAA × Fail

Any Text WCAG AAA × Fail

Black Background



This preview shows how the XYZ color 59.0787, 58.5554, 62.8321 looks on a black background.

Color Contrast Check

Large Text (above 18pt) WCAG AA ✓ Pass

Any Text WCAG AA ✓ Pass

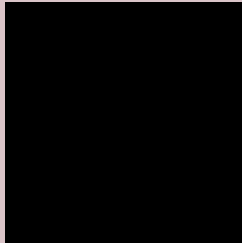
Large Text (above 18pt) WCAG AAA ✓ Pass

Any Text WCAG AAA ✓ Pass

If you want to check with other color combinations, try the [Color Contrast Checker](#).

XYZ 59.0787, 58.5554, 62.8321

Background



This preview shows how black text looks on a background with the XYZ color 59.0787, 58.5554, 62.8321.



This preview shows how white text looks on a background with the XYZ color 59.0787, 58.5554,

Color Blindness Simulation

Color vision deficiency is a very complex topic, and I could not describe the different causes any better than Wikipedia does, so if you want to learn more, you should check out their [article about color blindness](#).

Dichromacy



Original Color

59.0787, 58.5554, 62.8321

Protanopia

56.2168, 58.4102, 64.1885

Deuteranopia

59.7592, 58.5725, 62.7996



Tritanopia

60.1381, 58.2968, 69.0556

Trichromacy



Original Color

59.0787, 58.5554, 62.8321

Protanomaly

57.2605, 58.6192, 63.5550

Deuteranomaly

59.4556, 58.4160, 62.7853

Tritanomaly

59.8691, 58.5465, 66.5377

Monochromacy



Original Color

59.0787, 58.5554, 62.8321

Achromatopsia

56.7640, 59.7202, 65.0353

Achromatomaly

57.3274, 58.9827, 64.2404

CSS Examples

Text

The CSS property to change the color of the text to XYZ 59.0787, 58.5554, 62.8321 is called "color". The color property can be set on classes, ids or directly on the HTML element.

This example shows how text in the color rgb(218, 196, 200) looks like.

```
.text, #text, p{  
    color:rgb(218, 196, 200)  
}
```

If you want to add a text shadow in that color use the text-shadow property, you can generate a text shadow directly with our [CSS Text Shadow Generator](#).

Here you see how black text with a 4 pixel rgb(218, 196, 200) colored shadow looks like.

```
.shadow{ text-shadow: 4px 4px 2px rgb(218, 196, 200) }
```

Border

The CSS property to change the border of an element to XYZ 59.0787, 58.5554, 62.8321 is called "border". The border property can be set on classes, ids or directly on the HTML element.

This example shows the color as border, it can be applied via the CSS property "border" or "border-color".

```
.border, #border, table{ border:4px solid rgb(218, 196, 200) }
```


If only the border color should be changed use the property `border-color`.

```
.border{ border-color:rgb(218, 196, 200) }
```

If you want to add a box shadow in that color use:

Here you see how a box with a 4 pixel `rgb(218, 196, 200)` colored shadow looks like.

```
.boxshadow{ -moz-box-shadow:4px 4px 4px  
4px rgb(218, 196, 200); -webkit-box-  
shadow:4px 4px 4px 4px rgb(218, 196, 200);  
box-shadow:4px 4px 4px 4px rgb(218, 196,  
200) }
```

Background

The CSS property to change the background color of an element to XYZ 59.0787, 58.5554, 62.8321 is called "background". The background property can be set on classes, ids or directly on the HTML element.

```
.background, #background, body{  
background: rgb(218, 196, 200) }
```

If only the background color should be changed can be used:

```
.background{ background-color: rgb(218,  
196, 200) }
```

This example shows the color as background, it is applied via the CSS property "background".

To optimize and compress your CSS code, you can use our [online CSS compressor and optimizer](#) based on csstidy. If you want to create a linear or radial gradient as background or border, check our [CSS Gradient Generator](#).

Hey! You found this booklet interesting? Support Converting Colors with the new Membership Option!

The pro membership hides all ads, plus gives you double the colors in the color bucket, and more awesome pro features!

[Learn more, Memberships starting at \\$2.50/m!](#)

**Follow me
on Twitter!**

@ConvertingColor