

Converting Colors

XYZ(59.0947, 60.1181, 57.1758)

Have a look what the booklet for
XYZ(59.0947, 60.1181, 57.1758)
contains.

XYZ(59.1620, 60.0863, 57.1948)	3
<i>Conversions</i>	4
<i>Details</i>	6
<i>Harmonies</i>	12
<i>Previews</i>	24
<i>Color Blindness Simulation</i>	28
<i>CSS Examples</i>	31

Color

**XYZ(59.1620, 60.0863,
57.1948)**

Conversions

Conversions Part 1

Format	Color
Hex	DBC8BE
RGB	219, 200, 190
RGB Percent	86%, 78%, 75%
CMY	0.1412, 0.2157, 0.2549
CMYK	0.00, 0.09, 0.13, 0.14
HSL	21°, 29%, 80%
HSV	21°, 13%, 86%
XYZ	59.1620, 60.0863, 57.1948
YIQ	204.5410, 14.5340, 0.9180

Conversions

Conversions Part 2

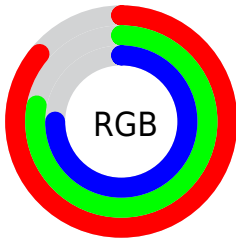
Format	Color
R _Y B	219, 205, 190
Decimal	14403774
CIE Lab	81.89, 4.99, 7.40
CIE LCh	82, 8.923, 55.972
Yxy	60.0863, 0.3353, 0.3405
Android (android.graphics.Color)	4292593854 (0xFFDBC8BE)
YUV	204.5410, -7.1687, 12.6805
Hunter-Lab	77.5154, 0.5846, 10.5135

Details

The XYZ color **59.1620, 60.0863, 57.1948** is a light color, and the websafe version is hex **CCCCCC**. A complement of this color would be **56.8217, 61.6615, 75.9256**, and the grayscale version is **57.7758, 60.7847, 66.1945**.

A 20% lighter version of the original color is **93.6346, 99.4338, 101.4464**, and **30.1041, 30.2564, 27.9203** is the 20% darker color. If you saturate the color by 10%, you get **53.7784, 52.8658, 44.4650**, and if you desaturate by 10%, it is **65.2204, 68.0795, 71.9254**.

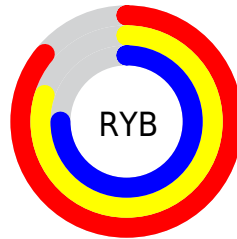
Distribution



Red (86%)

Green (78%)

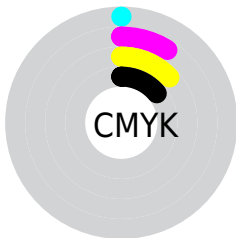
Blue (75%)



Red (86%)

Yellow (80%)

Blue (75%)

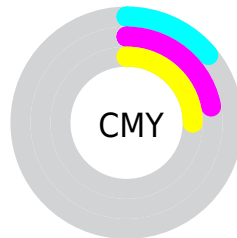


Cyan (0%)

Magenta (9%)

Yellow (13%)

Black (14%)



Cyan (14%)

Magenta (22%)

Yellow (25%)

Brightness & Saturation Gradients

These gradients show how the XYZ color 59.1620, 60.0863, 57.1948 changes by changing the brightness by 10 percent. The first figure shows a shift by +10% for each color and the second figure -10%.

Similar to the brightness gradients but the following saturation gradients show a change of the XYZ color 59.1620, 60.0863, 57.1948 by changing the saturation by 10% instead.

■ 59.1620, 60.0863,
57.1948

■ 59.1620, 60.0863,
57.1948

411.3864,
424.9158, 431.6930

■ 42.9904, 43.4882,
40.7513

■ 102.7264,
104.9548, 102.2525

■ 30.0721, 30.2684,
27.8065

130.8498,
133.9941, 131.7038

■ 20.0417, 20.0424,
17.9421

163.6880,
167.9491, 166.3280

■ 12.5338, 12.4258,
10.7394

201.6062,
207.2044, 206.5438

■ 7.1831, 7.0344,
5.7799

244.9698,
252.1444, 252.7697

■ 3.6242, 3.4836,
2.6451

294.1441,

■ 1.4918, 1.3891,

303.1533, 305.4241

0.9156

349.4945,
360.6156, 364.9257

■ 0.3202, 0.2087,
0.0000

■ 0.0000, 0.0000,
0.0000

■ 59.1620, 60.0863,
57.1948

■ 59.1620, 60.0863,
57.1948

■ 53.7784, 52.8658,
44.4650

■ 65.2204, 68.0795,
71.9254

■ 49.0401, 46.3866,
33.6451

■ 71.9718, 76.8599,
88.7347

■ 44.9226, 40.6265,
24.6428

■ 79.3267, 86.4062,
107.1048

■ 41.3980, 35.5596,
17.3567

■ 83.0238, 93.8002,
108.3372

■ 38.4358, 31.1579,
11.6751

■ 36.0026, 27.3913,
7.4731

■ 34.0607, 24.2273,
4.6069

■ 32.5661, 21.6293,
2.9030

■ 31.7671, 20.1669,
2.2183

Harmonies

Analogous

The Analogous color harmony consists of three colors that are next to each other on the color wheel.



60.4301, 60.0863, 60.9837



59.1620, 60.0863, 57.1948



57.3651, 60.0863, 55.6085

Triad

The Triadic color harmony groups three colors that are evenly spaced from another and form a triangle on the color wheel.



59.1620, 60.0863, 57.1948



53.5714, 60.0863, 64.6975



58.7118, 60.0863, 75.2035

Complementary

The Complementary color scheme is a pair of colors which are on the opposite of each other on the color wheel.



59.1620, 60.0863, 57.1948



56.8217, 61.6615, 75.9256

Split Complementary

Split-complementary colors differ from the complementary color scheme. The scheme consists of three colors, the original color and two neighbors of the complement color.



56.8561, 60.0863, 76.3310



59.1620, 60.0863, 57.1948



53.9143, 60.0863, 70.0743

Square

The Square scheme is like the rectangle color scheme, but the four colors are evenly spaced on the color wheel.



59.1620, 60.0863, 57.1948



54.1596, 60.0863, 59.7868



55.1064, 60.0863, 74.4064



60.1661, 60.0863, 71.4044

Rectangle

The Rectangle color scheme consists of four colors that form a rectangle on the color wheel.



59.1620, 60.0863, 57.1948



56.1190, 60.0863, 55.9456



55.1064, 60.0863, 74.4064



58.1131, 60.0863, 75.9162

Sweetspot

The Sweet Spot groups the original color and five complimentary colors.



59.1636, 60.0890, 57.1961



91.3563, 95.1712, 99.7811



59.1776, 56.5078, 68.3271



19.4092, 20.1805, 21.0016



0.0000, 0.0000, 0.0000



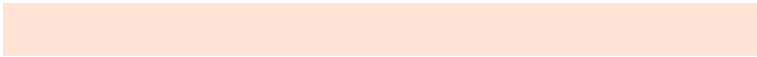
20.3446, 21.4041, 23.3091

Same Dimension

The Same Dimension uses a secret algorithm to generate beautiful new colors.



59.1636, 60.0890, 57.1961



81.2221, 81.7632, 75.2533



62.5972, 66.9561, 58.3406



13.4215, 13.7823, 13.6784



18.9284, 12.1424, 1.3461



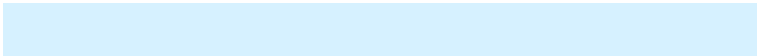
1.3051, 0.9442, 0.1135

Inverse Universe

The Inverse Universe completely reimagines the original color for something new.



56.8217, 61.6615, 75.9256



77.2732, 84.4128, 106.8283



53.5000, 55.0180, 74.8184



13.0471, 14.0339, 16.6733



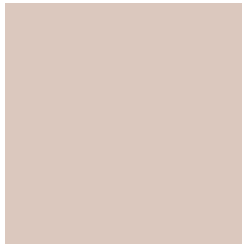
13.5521, 14.9736, 41.9143



0.9571, 1.1284, 2.7418

Previews

White Background



This preview shows how the XYZ color 59.1620, 60.0863, 57.1948 looks on a white background.

Color Contrast Check

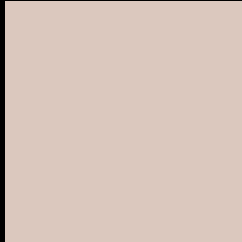
Large Text (above 18pt) WCAG AA × Fail

Any Text WCAG AA × Fail

Large Text (above 18pt) WCAG AAA × Fail

Any Text WCAG AAA × Fail

Black Background



This preview shows how the XYZ color 59.1620, 60.0863, 57.1948 looks on a black background.

Color Contrast Check

Large Text (above 18pt) WCAG AA ✓ Pass

Any Text WCAG AA ✓ Pass

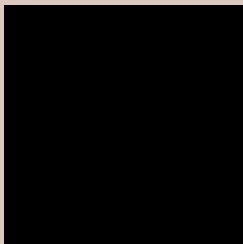
Large Text (above 18pt) WCAG AAA ✓ Pass

Any Text WCAG AAA ✓ Pass

If you want to check with other color combinations, try the [Color Contrast Checker](#).

XYZ 59.1620, 60.0863, 57.1948

Background



This preview shows how black text looks on a background with the XYZ color 59.1620, 60.0863, 57.1948.



This preview shows how white text looks on a background with the XYZ color 59.1620, 60.0863,

Color Blindness Simulation

Color vision deficiency is a very complex topic, and I could not describe the different causes any better than Wikipedia does, so if you want to learn more, you should check out their [article about color blindness](#).

Dichromacy



Original Color

59.1620, 60.0863, 57.1948

Protanopia

57.4487, 60.2193, 58.4648

Deuteranopia

61.3651, 60.1881, 57.6734



Tritanopia

61.9741, 60.2156, 70.6437

Trichromacy



Original Color

59.1620, 60.0863, 57.1948

Protanomaly

57.9651, 60.1488, 57.8450

Deuteranomaly

60.6494, 60.1573, 57.7052

Tritanomaly

60.9120, 60.1200, 65.5206

Monochromacy



Original Color

59.1620, 60.0863, 57.1948

Achromatopsia

58.0276, 61.0496, 66.4830

Achromatomaly

58.3596, 60.5836, 63.2615

CSS Examples

Text

The CSS property to change the color of the text to XYZ 59.1620, 60.0863, 57.1948 is called "color". The color property can be set on classes, ids or directly on the HTML element.

This example shows how text in the color `rgb(219, 200, 190)` looks like.

```
.text, #text, p{  
    color:rgb(219, 200, 190)  
}
```

If you want to add a text shadow in that color use the text-shadow property, you can generate a text shadow directly with our [CSS Text Shadow Generator](#).

Here you see how black text with a 4 pixel rgb(219, 200, 190) colored shadow looks like.

```
.shadow{ text-shadow: 4px 4px 2px rgb(219, 200, 190) }
```

Border

The CSS property to change the border of an element to XYZ 59.1620, 60.0863, 57.1948 is called "border". The border property can be set on classes, ids or directly on the HTML element.

This example shows the color as border, it can be applied via the CSS property "border" or "border-color".

```
.border, #border, table{ border:4px solid rgb(219, 200, 190) }
```


If only the border color should be changed use the property `border-color`.

```
.border{ border-color:rgb(219, 200, 190) }
```

If you want to add a box shadow in that color use:

Here you see how a box with a 4 pixel `rgb(219, 200, 190)` colored shadow looks like.

```
.boxshadow{ -moz-box-shadow:4px 4px 4px  
4px rgb(219, 200, 190); -webkit-box-  
shadow:4px 4px 4px 4px rgb(219, 200, 190);  
box-shadow:4px 4px 4px 4px rgb(219, 200,  
190) }
```

Background

The CSS property to change the background color of an element to XYZ 59.1620, 60.0863, 57.1948 is called "background". The background property can be set on classes, ids or directly on the HTML element.

```
.background, #background, body{  
background: rgb(219, 200, 190) }
```

If only the background color should be changed can be used:

```
.background{ background-color: rgb(219,  
200, 190) }
```

This example shows the color as background, it is applied via the CSS property "background".

To optimize and compress your CSS code, you can use our [online CSS compressor and optimizer](#) based on csstidy. If you want to create a linear or radial gradient as background or border, check our [CSS Gradient Generator](#).

Hey! You found this booklet interesting? Support Converting Colors with the new Membership Option!

The pro membership hides all ads, plus gives you double the colors in the color bucket, and more awesome pro features!

[Learn more, Memberships starting at \\$2.50/m!](#)

**Follow me
on Twitter!**

@ConvertingColor