

Converting Colors

XYZ(59.1079, 57.4744, 60.6908)

Have a look what the booklet for
XYZ(59.1079, 57.4744, 60.6908)
contains.

XYZ(59.2722, 57.7007, 60.8367)	3
<i>Conversions</i>	4
<i>Details</i>	6
<i>Harmonies</i>	12
<i>Previews</i>	24
<i>Color Blindness Simulation</i>	28
<i>CSS Examples</i>	31

Color

**XYZ(59.2722, 57.7007,
60.8367)**

Conversions

Conversions Part 1

Format	Color
Hex	DEC1C5
RGB	222, 193, 197
RGB Percent	87%, 76%, 77%
CMY	0.1294, 0.2431, 0.2274
CMYK	0.00, 0.13, 0.11, 0.13
HSL	352°, 31%, 81%
HSV	352°, 13%, 87%
XYZ	59.2722, 57.7007, 60.8367
YIQ	202.1270, 16.0000, 7.3920

Conversions

Conversions Part 2

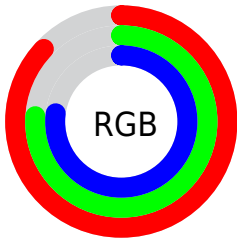
Format	Color
RYB	222, 193, 197
Decimal	14598597
CIELab	80.57, 10.92, 1.78
CIELCh	81, 11.061, 9.242
Yxy	57.7007, 0.3333, 0.3245
Android (android.graphics.Color)	4292788677 (0xFFDEC1C5)
YUV	202.1270, -2.5276, 17.4286
Hunter-Lab	75.9610, 6.3515, 5.6877

Details

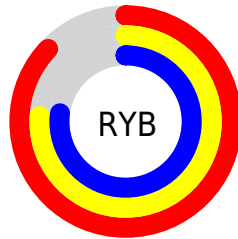
The XYZ color **59.2722, 57.7007, 60.8367** is a light color, and the websafe version is hex **FFCCCC**. A complement of this color would be **60.7707, 68.6434, 76.3795**, and the grayscale version is **56.2279, 59.1561, 64.4210**.

A 20% lighter version of the original color is **93.0051, 96.1671, 107.4261**, and **30.1269, 28.6639, 29.9314** is the 20% darker color. If you saturate the color by 10%, you get **52.6725, 47.7908, 48.4947**, and if you desaturate by 10%, it is **66.8903, 69.2005, 74.8935**.

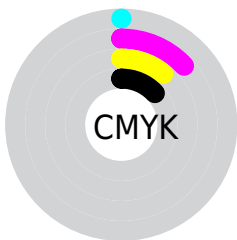
Distribution



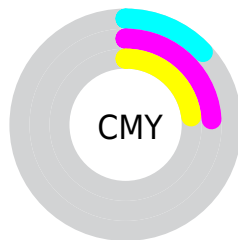
- Red (87%)
- Green (76%)
- Blue (77%)



- Red (87%)
- Yellow (76%)
- Blue (77%)



- Cyan (0%)
- Magenta (13%)
- Yellow (11%)
- Black (13%)



- Cyan (13%)
- Magenta (24%)
- Yellow (23%)

Brightness & Saturation Gradients

These gradients show how the XYZ color 59.2722, 57.7007, 60.8367 changes by changing the brightness by 10 percent. The first figure shows a shift by +10% for each color and the second figure -10%.

Similar to the brightness gradients but the following saturation gradients show a change of the XYZ color 59.2722, 57.7007, 60.8367 by changing the saturation by 10% instead.

■ 59.2722, 57.7007,
60.8367

■ 59.2722, 57.7007,
60.8367

411.7878,
416.0698, 445.5650

■ 43.0795, 41.5681,
43.6637

■ 102.8855,
101.4869, 107.5977

■ 30.1423, 28.7632,
30.0710

131.0369,
129.9092, 138.0227

■ 20.0952, 18.9018,
19.6399

163.9051,
163.1969, 173.7022

■ 12.5729, 11.5993,
11.9521

201.8557,
201.7344, 215.0547

■ 7.2101, 6.4715,
6.5889

245.2539,
245.9060, 262.4986

■ 3.6413, 3.1338,
3.1319

294.4650,

■ 1.5013, 1.2020,

296.0962, 316.4526

1.1624

349.8545,
352.6893, 377.3352

■ 0.3267, 0.0633,
0.0000

■ 0.0000, 0.0000,
0.0000

■ 59.2722, 57.7007,
60.8367

■ 59.2722, 57.7007,
60.8367

■ 52.6725, 47.7908,
48.4947

■ 66.8903, 69.2005,
74.8935

■ 47.0433, 39.3934,
37.7980

■ 75.5624, 82.3476,
90.7235

■ 42.3399, 32.4363,
28.6781

■ 83.8417, 94.2326,
107.8912

■ 38.5124, 26.8384,
21.0599

■ 83.9345, 94.2697,
108.3798

■ 35.5058, 22.5105,
14.8624

■ 33.2592, 19.3526,
9.9968

■ 31.7027, 17.2499,
6.3639

■ 30.7534, 16.0639,
3.8505

■ 30.3665, 15.6266,
2.6843

Harmonies

Analogous

The Analogous color harmony consists of three colors that are next to each other on the color wheel.



59.0334, 57.7007, 67.3693



59.2722, 57.7007, 60.8367



58.2990, 57.7007, 55.2337

Triad

The Triadic color harmony groups three colors that are evenly spaced from another and form a triangle on the color wheel.



59.2722, 57.7007, 60.8367



52.1233, 57.7007, 53.6193



53.3078, 57.7007, 75.2769

Complementary

The Complementary color scheme is a pair of colors which are on the opposite of each other on the color wheel.



59.2722, 57.7007, 60.8367



60.7707, 68.6434, 76.3795

Split Complementary

Split-complementary colors differ from the complementary color scheme. The scheme consists of three colors, the original color and two neighbors of the complement color.



51.5260, 57.7007, 71.0846



59.2722, 57.7007, 60.8367



50.8553, 57.7007, 58.4922

Square

The Square scheme is like the rectangle color scheme, but the four colors are evenly spaced on the color wheel.



59.2722, 57.7007, 60.8367



54.1436, 57.7007, 51.2603



50.6397, 57.7007, 64.8587



55.5479, 57.7007, 76.0129

Rectangle

The Rectangle color scheme consists of four colors that form a rectangle on the color wheel.



59.2722, 57.7007, 60.8367



57.1092, 57.7007, 52.6690



50.6397, 57.7007, 64.8587



52.6371, 57.7007, 74.2120

Sweetspot

The Sweet Spot groups the original color and five complimentary colors.



59.2738, 57.7033, 60.8379



90.4981, 93.1103, 100.5568



61.0654, 58.2680, 77.1363



19.1927, 19.6609, 21.1969



0.0000, 0.0000, 0.0000



20.3446, 21.4041, 23.3091

Same Dimension

The Same Dimension uses a secret algorithm to generate beautiful new colors.



59.2738, 57.7033, 60.8379



78.2320, 74.6124, 77.8657



61.1430, 62.1648, 59.2315



13.7838, 13.7311, 14.6316



18.0607, 9.2913, 1.7193



1.2768, 0.6540, 0.2507

Inverse Universe

The Inverse Universe completely reimagines the original color for something new.



59.2738, 57.7033, 60.8379



78.2320, 74.6124, 77.8657



58.6852, 63.6254, 78.2958



13.7838, 13.7311, 14.6316



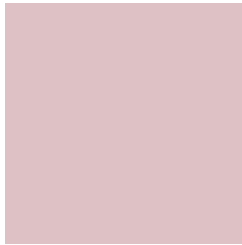
18.0607, 9.2913, 1.7193



1.2768, 0.6540, 0.2507

Previews

White Background



This preview shows how the XYZ color 59.2722, 57.7007, 60.8367 looks on a white background.

Color Contrast Check

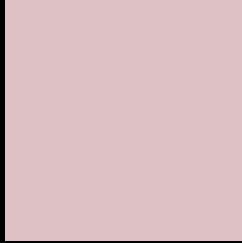
Large Text (above 18pt) WCAG AA × Fail

Any Text WCAG AA × Fail

Large Text (above 18pt) WCAG AAA × Fail

Any Text WCAG AAA × Fail

Black Background



This preview shows how the XYZ color 59.2722, 57.7007, 60.8367 looks on a black background.

Color Contrast Check

Large Text (above 18pt) WCAG AA ✓ Pass

Any Text WCAG AA ✓ Pass

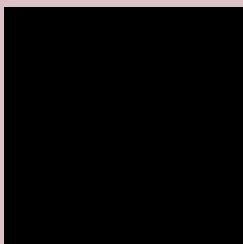
Large Text (above 18pt) WCAG AAA ✓ Pass

Any Text WCAG AAA ✓ Pass

If you want to check with other color combinations, try the [Color Contrast Checker](#).

XYZ 59.2722, 57.7007, 60.8367

Background



This preview shows how black text looks on a background with the XYZ color 59.2722, 57.7007, 60.8367.



This preview shows how white text looks on a background with the XYZ color 59.2722, 57.7007,

Color Blindness Simulation

Color vision deficiency is a very complex topic, and I could not describe the different causes any better than Wikipedia does, so if you want to learn more, you should check out their [article about color blindness](#).

Dichromacy



Original Color

59.2722, 57.7007, 60.8367

Protanopia

55.4774, 57.7135, 62.8594

Deuteranopia

58.8850, 57.8304, 60.8821



Tritanopia

60.4216, 57.8435, 66.3729

Trichromacy



Original Color

59.2722, 57.7007, 60.8367

Protanomaly

56.8534, 57.7577, 62.1847

Deuteranomaly

59.1886, 57.9869, 60.8963

Tritanomaly

60.0606, 57.6990, 64.4714

Monochromacy



Original Color

59.2722, 57.7007, 60.8367

Achromatopsia

56.1383, 59.0619, 64.3184

Achromatomaly

57.1432, 58.5723, 62.9374

CSS Examples

Text

The CSS property to change the color of the text to XYZ 59.2722, 57.7007, 60.8367 is called "color". The color property can be set on classes, ids or directly on the HTML element.

This example shows how text in the color `rgb(222, 193, 197)` looks like.

```
.text, #text, p{  
    color:rgb(222, 193, 197)  
}
```

If you want to add a text shadow in that color use the text-shadow property, you can generate a text shadow directly with our [CSS Text Shadow Generator](#).

Here you see how black text with a 4 pixel rgb(222, 193, 197) colored shadow looks like.

```
.shadow{ text-shadow: 4px 4px 2px rgb(222, 193, 197) }
```

Border

The CSS property to change the border of an element to XYZ 59.2722, 57.7007, 60.8367 is called "border". The border property can be set on classes, ids or directly on the HTML element.

This example shows the color as border, it can be applied via the CSS property "border" or "border-color".

```
.border, #border, table{ border:4px solid rgb(222, 193, 197) }
```


If only the border color should be changed use the property `border-color`.

```
.border{ border-color:rgb(222, 193, 197) }
```

If you want to add a box shadow in that color use:

Here you see how a box with a 4 pixel `rgb(222, 193, 197)` colored shadow looks like.

```
.boxshadow{ -moz-box-shadow:4px 4px 4px  
4px rgb(222, 193, 197); -webkit-box-  
shadow:4px 4px 4px 4px rgb(222, 193, 197);  
box-shadow:4px 4px 4px 4px rgb(222, 193,  
197) }
```

Background

The CSS property to change the background color of an element to XYZ 59.2722, 57.7007, 60.8367 is called "background". The background property can be set on classes, ids or directly on the HTML element.

```
.background, #background, body{  
background: rgb(222, 193, 197) }
```

If only the background color should be changed can be used:

```
.background{ background-color: rgb(222,  
193, 197) }
```

This example shows the color as background, it is applied via the CSS property "background".

To optimize and compress your CSS code, you can use our [online CSS compressor and optimizer](#) based on csstidy. If you want to create a linear or radial gradient as background or border, check our [CSS Gradient Generator](#).

Hey! You found this booklet interesting? Support Converting Colors with the new Membership Option!

The pro membership hides all ads, plus gives you double the colors in the color bucket, and more awesome pro features!

[Learn more, Memberships starting at \\$2.50/m!](#)

**Follow me
on Twitter!**

@ConvertingColor