

Converting Colors

XYZ(59.1584, 58.7272, 56.9327)

Have a look what the booklet for
XYZ(59.1584, 58.7272, 56.9327)
contains.

XYZ(59.1584, 58.7272, 56.9327)	3
<i>Conversions</i>	4
<i>Details</i>	6
<i>Harmonies</i>	12
<i>Previews</i>	24
<i>Color Blindness Simulation</i>	28
<i>CSS Examples</i>	31

Color

**XYZ(59.1584, 58.7272,
56.9327)**

Conversions

Conversions Part 1

Format	Color
Hex	DEC4BE
RGB	222, 196, 190
RGB Percent	87%, 77%, 75%
CMY	0.1294, 0.2314, 0.2549
CMYK	0.00, 0.12, 0.14, 0.13
HSL	11°, 33%, 81%
HSV	11°, 14%, 87%
XYZ	59.1584, 58.7272, 56.9327
YIQ	203.0900, 17.4220, 3.6460

Conversions

Conversions Part 2

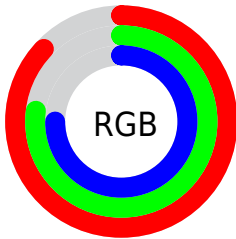
Format	Color
R_{YB}	222, 197, 190
Decimal	14599358
CIE Lab	81.14, 8.19, 6.36
CIE LCh	81, 10.369, 37.830
Yxy	58.7272, 0.3384, 0.3359
Android (android.graphics.Color)	4292789438 (0xFFDEC4BE)
YUV	203.0900, -6.4534, 16.5841
Hunter-Lab	76.6337, 3.6866, 9.5958

Details

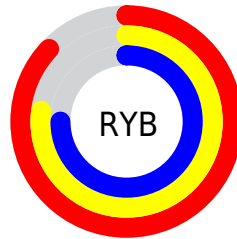
The XYZ color **59.1584, 58.7272, 56.9327** is a light color, and the websafe version is hex **CCCCCC**. A complement of this color would be **58.9755, 65.3313, 78.6096**, and the grayscale version is **56.8542, 59.8151, 65.1386**.

A 20% lighter version of the original color is **92.9998, 98.1644, 101.2348**, and **30.1247, 29.3676, 27.7477** is the 20% darker color. If you saturate the color by 10%, you get **53.0884, 50.1787, 43.8362**, and if you desaturate by 10%, it is **66.0903, 68.4068, 72.1412**.

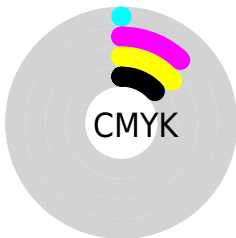
Distribution



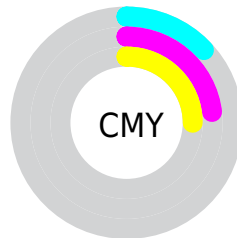
- Red (87%)
- Green (77%)
- Blue (75%)



- Red (87%)
- Yellow (77%)
- Blue (75%)



- Cyan (0%)
- Magenta (12%)
- Yellow (14%)
- Black (13%)



- Cyan (13%)
- Magenta (23%)
- Yellow (25%)

Brightness & Saturation Gradients

These gradients show how the XYZ color 59.1584, 58.7272, 56.9327 changes by changing the brightness by 10 percent. The first figure shows a shift by +10% for each color and the second figure -10%.

Similar to the brightness gradients but the following saturation gradients show a change of the XYZ color 59.1584, 58.7272, 56.9327 by changing the saturation by 10% instead.

■ 59.1584, 58.7272,
56.9327

■ 59.1584, 58.7272,
56.9327

411.3733,
419.8902, 430.6838

■ 42.9875, 42.3936,
40.5422

■ 102.7212,
102.9811, 101.8663

■ 30.0698, 29.4096,
27.6446

130.8437,
131.6701, 131.2466

■ 20.0399, 19.3909,
17.8212

163.6809,
165.2464, 165.7938

■ 12.5325, 11.9531,
10.6536

201.5980,
204.0943, 205.9266

■ 7.1822, 6.7117,
5.7232

244.9605,
248.5982, 252.0634

■ 3.6236, 3.2825,
2.6114

294.1336,

■ 1.4915, 1.2809,

299.1426, 304.6228

0.8984

349.4828,
356.1118, 364.0235

■ 0.3200, 0.1264,
0.0000

■ 0.0000, 0.0000,
0.0000

■ 59.1584, 58.7272,
56.9327

■ 59.1584, 58.7272,
56.9327

■ 53.0884, 50.1787,
43.8362

■ 66.0903, 68.4068,
72.1412

■ 47.8415, 42.7121,
32.7545

■ 73.9112, 79.2487,
89.5457

■ 43.3831, 36.2866,
23.5883

■ 82.3940, 91.1890,
107.8663

■ 39.6742, 30.8552,
16.2282

■ 83.9344, 94.2697,
108.3798

■ 36.6725, 26.3678,
10.5540

■ 34.3311, 22.7694,
6.4304

■ 32.5973, 19.9994,
3.7014

■ 31.4092, 17.9890,
2.1776

■ 30.9402, 17.1612,
1.6817

Harmonies

Analogous

The Analogous color harmony consists of three colors that are next to each other on the color wheel.



60.0284, 58.7272, 62.3395



59.1584, 58.7272, 56.9327



57.3980, 58.7272, 53.5637

Triad

The Triadic color harmony groups three colors that are evenly spaced from another and form a triangle on the color wheel.



59.1584, 58.7272, 56.9327



52.0654, 58.7272, 59.5661



56.3853, 58.7272, 76.4465

Complementary

The Complementary color scheme is a pair of colors which are on the opposite of each other on the color wheel.



59.1584, 58.7272, 56.9327



58.9755, 65.3313, 78.6096

Split Complementary

Split-complementary colors differ from the complementary color scheme. The scheme consists of three colors, the original color and two neighbors of the complement color.



54.2681, 58.7272, 75.5854



59.1584, 58.7272, 56.9327



51.8100, 58.7272, 65.5757

Square

The Square scheme is like the rectangle color scheme, but the four colors are evenly spaced on the color wheel.



59.1584, 58.7272, 56.9327



53.3134, 58.7272, 55.0145



52.6066, 58.7272, 71.5084



58.4008, 58.7272, 73.7908

Rectangle

The Rectangle color scheme consists of four colors that form a rectangle on the color wheel.



59.1584, 58.7272, 56.9327



55.9756, 58.7272, 52.7947



52.6066, 58.7272, 71.5084



55.6616, 58.7272, 76.5617

Sweetspot

The Sweet Spot groups the original color and five complimentary colors.



59.1600, 58.7298, 56.9339



90.8642, 94.1870, 99.6171



60.9502, 57.3221, 72.9086



19.2850, 19.9321, 20.9602



0.0000, 0.0000, 0.0000



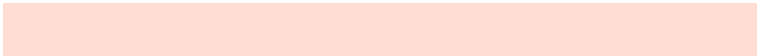
20.3446, 21.4041, 23.3091

Same Dimension

The Same Dimension uses a secret algorithm to generate beautiful new colors.



59.1600, 58.7298, 56.9339



78.6160, 77.0688, 72.7884



62.9292, 66.2683, 58.1904



13.9143, 14.1145, 14.2978



18.4374, 10.3128, 1.0188



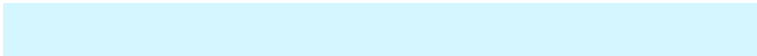
1.3389, 0.8367, 0.0909

Inverse Universe

The Inverse Universe completely reimagines the original color for something new.



58.9755, 65.3313, 78.6096



78.3204, 87.6048, 107.3892



55.1059, 57.5922, 77.3198



13.8865, 15.1122, 17.5727



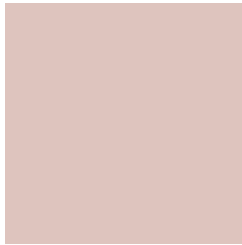
17.6444, 22.7584, 44.5112



1.2802, 1.6919, 3.1043

Previews

White Background



This preview shows how the XYZ color 59.1584, 58.7272, 56.9327 looks on a white background.

Color Contrast Check

Large Text (above 18pt) WCAG AA × Fail

Any Text WCAG AA × Fail

Large Text (above 18pt) WCAG AAA × Fail

Any Text WCAG AAA × Fail

Black Background



This preview shows how the XYZ color 59.1584, 58.7272, 56.9327 looks on a black background.

Color Contrast Check

Large Text (above 18pt) WCAG AA ✓ Pass

Any Text WCAG AA ✓ Pass

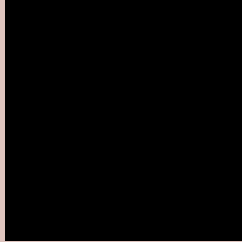
Large Text (above 18pt) WCAG AAA ✓ Pass

Any Text WCAG AAA ✓ Pass

If you want to check with other color combinations, try the [Color Contrast Checker](#).

XYZ 59.1584, 58.7272, 56.9327

Background



This preview shows how black text looks on a background with the XYZ color 59.1584, 58.7272, 56.9327.



This preview shows how white text looks on a background with the XYZ color 59.1584, 58.7272,

56.9327.

Color Blindness Simulation

Color vision deficiency is a very complex topic, and I could not describe the different causes any better than Wikipedia does, so if you want to learn more, you should check out their [article about color blindness](#).

Dichromacy



Original Color

59.1584, 58.7272, 56.9327

Protanopia

56.2444, 58.8889, 58.8544

Deuteranopia

59.8607, 58.7555, 56.9011



Tritanopia

61.1956, 58.5413, 67.7488

Trichromacy



Original Color

59.1584, 58.7272, 56.9327

Protanomaly

57.0892, 58.6497, 58.1808

Deuteranomaly

59.5498, 58.5952, 56.8866

Tritanomaly

60.2658, 58.4886, 63.3714

Monochromacy



Original Color

59.1584, 58.7272, 56.9327

Achromatopsia

56.7640, 59.7202, 65.0353

Achromatomaly

57.4257, 59.0874, 61.8044

CSS Examples

Text

The CSS property to change the color of the text to XYZ 59.1584, 58.7272, 56.9327 is called "color". The color property can be set on classes, ids or directly on the HTML element.

This example shows how text in the color `rgb(222, 196, 190)` looks like.

```
.text, #text, p{  
    color:rgb(222, 196, 190)  
}
```

If you want to add a text shadow in that color use the text-shadow property, you can generate a text shadow directly with our [CSS Text Shadow Generator](#).

Here you see how black text with a 4 pixel rgb(222, 196, 190) colored shadow looks like.

```
.shadow{ text-shadow: 4px 4px 2px rgb(222, 196, 190) }
```

Border

The CSS property to change the border of an element to XYZ 59.1584, 58.7272, 56.9327 is called "border". The border property can be set on classes, ids or directly on the HTML element.

This example shows the color as border, it can be applied via the CSS property "border" or "border-color".

```
.border, #border, table{ border:4px solid rgb(222, 196, 190) }
```


If only the border color should be changed use the property `border-color`.

```
.border{ border-color:rgb(222, 196, 190) }
```

If you want to add a box shadow in that color use:

Here you see how a box with a 4 pixel `rgb(222, 196, 190)` colored shadow looks like.

```
.boxshadow{ -moz-box-shadow:4px 4px 4px  
4px rgb(222, 196, 190); -webkit-box-  
shadow:4px 4px 4px 4px rgb(222, 196, 190);  
box-shadow:4px 4px 4px 4px rgb(222, 196,  
190) }
```

Background

The CSS property to change the background color of an element to XYZ 59.1584, 58.7272, 56.9327 is called "background". The background property can be set on classes, ids or directly on the HTML element.

```
.background, #background, body{  
background: rgb(222, 196, 190) }
```

If only the background color should be changed can be used:

```
.background{ background-color: rgb(222,  
196, 190) }
```

This example shows the color as background, it is applied via the CSS property "background".

To optimize and compress your CSS code, you can use our [online CSS compressor and optimizer](#) based on csstidy. If you want to create a linear or radial gradient as background or border, check our [CSS Gradient Generator](#).

Hey! You found this booklet interesting? Support Converting Colors with the new Membership Option!

The pro membership hides all ads, plus gives you double the colors in the color bucket, and more awesome pro features!

[Learn more, Memberships starting at \\$2.50/m!](#)

**Follow me
on Twitter!**

@ConvertingColor