

# Converting Colors

XYZ(59.3220, 60.3664, 59.3866)

Have a look what the booklet for  
XYZ(59.3220, 60.3664, 59.3866)  
contains.

<b>XYZ(59.5377, 60.5738, 59.5929)</b> .....	3
<b><i>Conversions</i></b> .....	4
<b><i>Details</i></b> .....	6
<b><i>Harmonies</i></b> .....	12
<b><i>Previews</i></b> .....	24
<b><i>Color Blindness Simulation</i></b> .....	28
<b><i>CSS Examples</i></b> .....	31

# Color

**XYZ(59.5377, 60.5738,  
59.5929)**

# Conversions

## Conversions Part 1

Format	Color
Hex	DAC9C2
RGB	218, 201, 194
RGB Percent	85%, 79%, 76%
CMY	0.1451, 0.2117, 0.2392
CMYK	0.00, 0.08, 0.11, 0.15
HSL	18°, 24%, 81%
HSV	18°, 11%, 85%
XYZ	59.5377, 60.5738, 59.5929
YIQ	205.2850, 12.3790, 1.4270

# Conversions

## Conversions Part 2

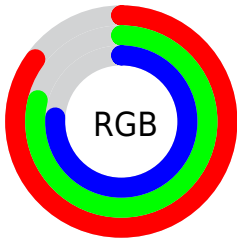
Format	Color
R <sub>Y</sub> B	218, 204, 194
Decimal	14338498
CIE Lab	82.15, 4.76, 5.63
CIE LCh	82, 7.367, 49.782
Yxy	60.5738, 0.3313, 0.3371
Android (android.graphics.Color)	4292528578 (0xFFDAC9C2)
YUV	205.2850, -5.5635, 11.1511
Hunter-Lab	77.8292, 0.3477, 9.0828

# Details

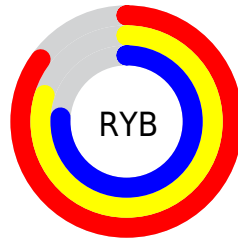
The XYZ color **59.5377, 60.5738, 59.5929** is a light color, and the websafe version is hex **CCCCCC**. A complement of this color would be **58.1970, 63.1186, 75.4460**, and the grayscale version is **58.2400, 61.2730, 66.7263**.

A 20% lighter version of the original color is **94.2553, 99.6821, 104.7153**, and **30.2716, 30.5474, 29.1117** is the 20% darker color. If you saturate the color by 10%, you get **53.8474, 52.8277, 46.4899**, and if you desaturate by 10%, it is **65.9524, 69.1924, 74.7108**.

# Distribution



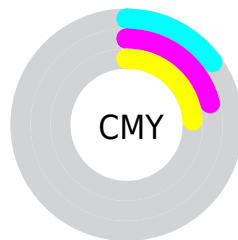
- Red (85%)
- Green (79%)
- Blue (76%)



- Red (85%)
- Yellow (80%)
- Blue (76%)



- Cyan (0%)
- Magenta (8%)
- Yellow (11%)
- Black (15%)



- Cyan (15%)
- Magenta (21%)
- Yellow (24%)

# Brightness & Saturation Gradients

These gradients show how the XYZ color 59.5377, 60.5738, 59.5929 changes by changing the brightness by 10 percent. The first figure shows a shift by +10% for each color and the second figure -10%.

Similar to the brightness gradients but the following saturation gradients show a change of the XYZ color 59.5377, 60.5738, 59.5929 by changing the saturation by 10% instead.



■ 59.5377, 60.5738,  
59.5929

■ 59.5377, 60.5738,  
59.5929

412.7537,  
426.7096, 440.8585

■ 43.2942, 43.8813,  
42.6674

■ 103.2689,  
105.6616, 105.7765

■ 30.3115, 30.5772,  
29.2948

131.4873,  
134.8257, 135.8717

■ 20.2244, 20.2771,  
19.0565

164.4280,  
168.9157, 171.1938

■ 12.6675, 12.5966,  
11.5339

202.4564,  
208.3162, 212.1616

■ 7.2754, 7.1514,  
6.3085

245.9378,  
253.4114, 259.1933

■ 3.6828, 3.5570,  
2.9617

295.2376,

■ 1.5243, 1.4290,

304.5857, 312.7077

1.0751

350.7211,  
362.2237, 373.1233

■ 0.3423, 0.2379,  
0.0000

■ 0.0000, 0.0000,  
0.0000

■ 59.5377, 60.5738,  
59.5929

■ 59.5377, 60.5738,  
59.5929

■ 53.8474, 52.8277,  
46.4899

■ 65.9524, 69.1924,  
74.7108

■ 48.8501, 45.9185,  
35.3124

■ 73.1111, 78.7017,  
91.9200

■ 44.5197, 39.8200,  
25.9698

■ 80.3222, 88.8426,  
107.5227

■ 40.8264, 34.5016,  
18.3628

■ 82.7237, 93.6456,  
108.3231

■ 37.7380, 29.9305,  
12.3827

■ 35.2190, 26.0716,  
7.9082

■ 33.2300, 22.8865,  
4.8008

■ 31.7255, 20.3328,  
2.8958

■ 30.7258, 18.5297,  
1.9572

# Harmonies

## Analogous

The Analogous color harmony consists of three colors that are next to each other on the color wheel.



60.4506, 60.5738, 63.0818



59.5377, 60.5738, 59.5929



58.1088, 60.5738, 57.8348

# Triad

The Triadic color harmony groups three colors that are evenly spaced from another and form a triangle on the color wheel.



59.5377, 60.5738, 59.5929



54.6638, 60.5738, 64.4382



58.5976, 60.5738, 74.3973

# Complementary

The Complementary color scheme is a pair of colors which are on the opposite of each other on the color wheel.



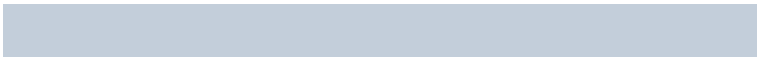
59.5377, 60.5738, 59.5929



58.1970, 63.1186, 75.4460

# Split Complementary

Split-complementary colors differ from the complementary color scheme. The scheme consists of three colors, the original color and two neighbors of the complement color.



57.0416, 60.5738, 74.8008



59.5377, 60.5738, 59.5929



54.7893, 60.5738, 68.9132

# Square

The Square scheme is like the rectangle color scheme, but the four colors are evenly spaced on the color wheel.



59.5377, 60.5738, 59.5929



55.3072, 60.5738, 60.5472



55.6531, 60.5738, 72.7536



59.9011, 60.5738, 71.6747



# Rectangle

The Rectangle color scheme consists of four colors that form a rectangle on the color wheel.



59.5377, 60.5738, 59.5929



57.0640, 60.5738, 57.8244



55.6531, 60.5738, 72.7536



58.0861, 60.5738, 74.8132

# Sweetspot

The Sweet Spot groups the original color and five complimentary colors.



59.5394, 60.5765, 59.5942



92.1386, 96.1091, 101.9738



59.9889, 58.2030, 69.8328



19.5584, 20.3529, 21.4402



0.0000, 0.0000, 0.0000



20.3446, 21.4041, 23.3091

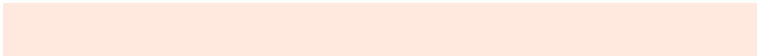


# Same Dimension

The Same Dimension uses a secret algorithm to generate beautiful new colors.



59.5394, 60.5765, 59.5942



83.1276, 83.9717, 80.8287



62.3957, 66.2891, 60.5463



13.3641, 13.6676, 13.6593



18.4888, 11.2631, 1.1995



1.2712, 0.8766, 0.1022

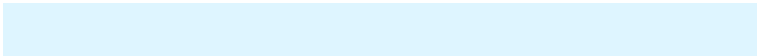


# Inverse Universe

The Inverse Universe completely reimagines the original color for something new.



58.1970, 63.1186, 75.4460



80.8793, 88.2279, 107.3746



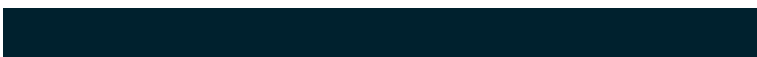
55.3733, 57.4711, 74.5048



13.1072, 14.1542, 16.6933



14.6392, 17.1479, 42.2767

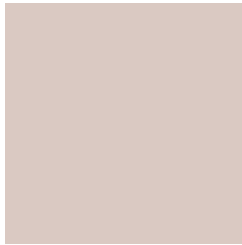


1.0214, 1.2569, 2.7632



# Previews

## White Background



This preview shows how the XYZ color 59.5377, 60.5738, 59.5929 looks on a white background.

## Color Contrast Check

Large Text (above 18pt) WCAG AA × Fail

Any Text WCAG AA × Fail

Large Text (above 18pt) WCAG AAA × Fail

Any Text WCAG AAA × Fail



# Black Background



This preview shows how the XYZ color 59.5377, 60.5738, 59.5929 looks on a black background.

## Color Contrast Check

Large Text (above 18pt) WCAG AA ✓ Pass

Any Text WCAG AA ✓ Pass

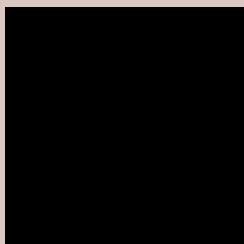
Large Text (above 18pt) WCAG AAA ✓ Pass

Any Text WCAG AAA ✓ Pass

If you want to check with other color combinations, try the [Color Contrast Checker](#).

**XYZ 59.5377, 60.5738, 59.5929**

## **Background**



This preview shows how black text looks on a background with the XYZ color 59.5377, 60.5738, 59.5929.



This preview shows how white text looks on a background with the XYZ color 59.5377, 60.5738,



# Color Blindness Simulation

Color vision deficiency is a very complex topic, and I could not describe the different causes any better than Wikipedia does, so if you want to learn more, you should check out their [article about color blindness](#).

## Dichromacy



### Original Color

59.5377, 60.5738, 59.5929

### Protanopia

58.0215, 60.8275, 60.3126

### Deuteranopia

61.8115, 60.3666, 60.0239



## Tritanopia

62.1505, 60.6154, 72.0426

# Trichromacy



## Original Color

59.5377, 60.5738, 59.5929

## Protanomaly

58.6468, 60.7981, 60.2740

## Deuteranomaly

60.7849, 60.1756, 60.0411

## Tritanomaly

61.2011, 60.5675, 67.4965

# Monochromacy



## Original Color

59.5377, 60.5738, 59.5929

## Achromatopsia

58.0276, 61.0496, 66.4830

## Achromatomaly

58.7138, 61.1044, 63.9581

# CSS Examples

## Text

The CSS property to change the color of the text to XYZ 59.5377, 60.5738, 59.5929 is called "color". The color property can be set on classes, ids or directly on the HTML element.

This example shows how text in the color rgb(218, 201, 194) looks like.

```
.text, #text, p{  
    color:rgb(218, 201, 194)  
}
```

If you want to add a text shadow in that color use the text-shadow property, you can generate a text shadow directly with our [CSS Text Shadow Generator](#).

Here you see how black text with a 4 pixel rgb(218, 201, 194) colored shadow looks like.

```
.shadow{ text-shadow: 4px 4px 2px rgb(218, 201, 194) }
```

## Border

The CSS property to change the border of an element to XYZ 59.5377, 60.5738, 59.5929 is called "border". The border property can be set on classes, ids or directly on the HTML element.

This example shows the color as border, it can be applied via the CSS property "border" or "border-color".

```
.border, #border, table{ border:4px solid rgb(218, 201, 194) }
```



If only the border color should be changed use the property `border-color`.

```
.border{ border-color:rgb(218, 201, 194) }
```

If you want to add a box shadow in that color use:

Here you see how a box with a 4 pixel `rgb(218, 201, 194)` colored shadow looks like.

```
.boxshadow{ -moz-box-shadow:4px 4px 4px  
4px rgb(218, 201, 194); -webkit-box-  
shadow:4px 4px 4px 4px rgb(218, 201, 194);  
box-shadow:4px 4px 4px 4px rgb(218, 201,  
194) }
```

# Background

The CSS property to change the background color of an element to XYZ 59.5377, 60.5738, 59.5929 is called "background". The background property can be set on classes, ids or directly on the HTML element.

```
.background, #background, body{  
background: rgb(218, 201, 194) }
```

If only the background color should be changed can be used:

```
.background{ background-color: rgb(218,  
201, 194) }
```

This example shows the color as background, it is applied via the CSS property "background".

To optimize and compress your CSS code, you can use our [online CSS compressor and optimizer](#) based on csstidy. If you want to create a linear or radial gradient as background or border, check our [CSS Gradient Generator](#).

Hey! You found this booklet interesting? Support Converting Colors with the new Membership Option!

The pro membership hides all ads, plus gives you double the colors in the color bucket, and more awesome pro features!

**[Learn more, Memberships starting at \\$2.50/m!](#)**

**Follow me  
on Twitter!**

@ConvertingColor