

# Converting Colors

XYZ(59.3950, 57.4448, 46.1298)

Have a look what the booklet for  
XYZ(59.3950, 57.4448, 46.1298)  
contains.

<b>XYZ(59.4908, 57.4875, 45.9909)</b> .....	3
<b><i>Conversions</i></b> .....	4
<b><i>Details</i></b> .....	6
<b><i>Harmonies</i></b> .....	12
<b><i>Previews</i></b> .....	24
<b><i>Color Blindness Simulation</i></b> .....	28
<b><i>CSS Examples</i></b> .....	31

# Color

**XYZ(59.4908, 57.4875,  
45.9909)**

# Conversions

## Conversions Part 1

Format	Color
Hex	E9BFAA
RGB	233, 191, 170
RGB Percent	91%, 75%, 67%
CMY	0.0863, 0.2510, 0.3333
CMYK	0.00, 0.18, 0.27, 0.09
HSL	20°, 59%, 79%
HSV	20°, 27%, 91%
XYZ	59.4908, 57.4875, 45.9909
YIQ	201.1640, 31.7730, 2.3730

# Conversions

## Conversions Part 2

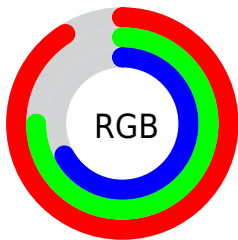
<b>Format</b>	<b>Color</b>
R <sub>Y</sub> B	233, 202, 170
Decimal	15318954
CIE Lab	80.45, 11.96, 16.24
CIE LCh	80, 20.164, 53.636
Yxy	57.4875, 0.3650, 0.3528
Android (android.graphics.Color)	4293509034 (0xFFE9BFAA)
YUV	201.1640, -15.3639, 27.9202
Hunter-Lab	75.8205, 7.3700, 17.1105

# Details

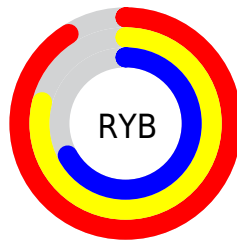
The XYZ color **59.4908, 57.4875, 45.9909** is a light color, and the websafe version is hex **FFCCCC**. A complement of this color would be **54.8285, 61.5145, 86.0749**, and the grayscale version is **55.6988, 58.5995, 63.8148**.

A 20% lighter version of the original color is **88.0914, 93.2178, 84.5841**, and **30.2630, 28.7151, 21.0871** is the 20% darker color. If you saturate the color by 10%, you get **54.2699, 50.2657, 34.3230**, and if you desaturate by 10%, it is **65.4647, 65.5893, 59.8383**.

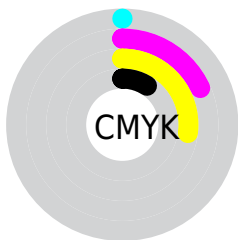
# Distribution



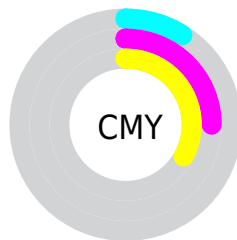
- Red (91%)
- Green (75%)
- Blue (67%)



- Red (91%)
- Yellow (79%)
- Blue (67%)



- Cyan (0%)
- Magenta (18%)
- Yellow (27%)
- Black (9%)



- Cyan (9%)
- Magenta (25%)
- Yellow (33%)

# Brightness & Saturation Gradients

These gradients show how the XYZ color 59.4908, 57.4875, 45.9909 changes by changing the brightness by 10 percent. The first figure shows a shift by +10% for each color and the second figure -10%.

Similar to the brightness gradients but the following saturation gradients show a change of the XYZ color 59.4908, 57.4875, 45.9909 by changing the saturation by 10% instead.



■ 59.4908, 57.4875,  
45.9909

■ 59.4908, 57.4875,  
45.9909

412.5832,  
415.2735, 387.0486

■ 43.2562, 41.3968,  
31.8900

■ 103.2012,  
101.1762, 85.5395

■ 30.2816, 28.6292,  
21.0134

131.4078,  
129.5429, 111.8243

■ 20.2016, 18.8005,  
12.9425

164.3357,  
162.7704, 143.0076

■ 12.6508, 11.5262,  
7.2587

202.3503,  
201.2431, 179.5077

■ 7.2638, 6.4220,  
3.5435

245.8170,  
245.3453, 221.7434

■ 3.6754, 3.1033,  
1.3784

295.1012,

■ 1.5202, 1.1859,

295.4616, 270.1330

0.1248

350.5681,  
351.9762, 325.0953

■ 0.3395, 0.0502,  
0.0000

■ 0.0000, 0.0000,  
0.0000

■ 59.4908, 57.4875,  
45.9909

■ 59.4908, 57.4875,  
45.9909

■ 54.2699, 50.2657,  
34.3230

■ 65.4647, 65.5893,  
59.8383

■ 49.7656, 43.8855,  
24.7187

■ 72.2167, 74.5920,  
75.9658

■ 45.9452, 38.3169,  
17.0567

■ 79.7764, 84.5260,  
94.4720

■ 42.7713, 33.5254,  
11.2012

■ 86.8215, 94.8779,  
108.3450

■ 40.2026, 29.4733,  
6.9989

■ 87.4144, 96.0637,  
108.5427

■ 38.1918, 26.1194,  
4.2704

■ 36.6810, 23.4163,  
2.7847

■ 36.3064, 22.7276,  
2.4733

# Harmonies

## Analogous

The Analogous color harmony consists of three colors that are next to each other on the color wheel.



62.2519, 57.4875, 53.9019



59.4908, 57.4875, 45.9909



55.5261, 57.4875, 42.5827

# Triad

The Triadic color harmony groups three colors that are evenly spaced from another and form a triangle on the color wheel.



59.4908, 57.4875, 45.9909



47.1136, 57.4875, 60.1042



57.8900, 57.4875, 85.8559

# Complementary

The Complementary color scheme is a pair of colors which are on the opposite of each other on the color wheel.



59.4908, 57.4875, 45.9909



54.8285, 61.5145, 86.0749

# Split Complementary

Split-complementary colors differ from the complementary color scheme. The scheme consists of three colors, the original color and two neighbors of the complement color.



53.7637, 57.4875, 88.0593



59.4908, 57.4875, 45.9909



47.6756, 57.4875, 72.1739

# Square

The Square scheme is like the rectangle color scheme, but the four colors are evenly spaced on the color wheel.



59.4908, 57.4875, 45.9909



48.4848, 57.4875, 50.0414



50.0606, 57.4875, 82.7779



61.2956, 57.4875, 77.0879



# Rectangle

The Rectangle color scheme consists of four colors that form a rectangle on the color wheel.



59.4908, 57.4875, 45.9909



52.7872, 57.4875, 42.9718



50.0606, 57.4875, 82.7779



56.5360, 57.4875, 87.4311

# Sweetspot

The Sweet Spot groups the original color and five complimentary colors.



59.4923, 57.4901, 45.9921



87.7519, 90.3836, 91.1154



59.8632, 50.8272, 68.9434



18.5041, 18.9764, 18.8319



0.0000, 0.0000, 0.0000



20.3446, 21.4041, 23.3091



# Same Dimension

The Same Dimension uses a secret algorithm to generate beautiful new colors.



59.4923, 57.4901, 45.9921



69.6165, 65.8824, 48.7858



67.1147, 72.7350, 48.5329



15.4758, 15.8746, 15.7672



20.7027, 13.0997, 1.4373



1.7112, 1.1998, 0.1414

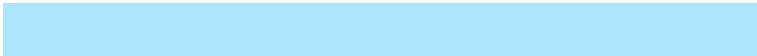


# Inverse Universe

The Inverse Universe completely reimagines the original color for something new.



54.8285, 61.5145, 86.0749



63.0590, 71.5235, 105.0896



47.7086, 47.2747, 83.7016



15.0701, 16.2266, 19.2600



15.1450, 16.9370, 46.2139



1.2771, 1.5056, 3.6582



# Previews

## White Background



This preview shows how the XYZ color 59.4908, 57.4875, 45.9909 looks on a white background.

## Color Contrast Check

Large Text (above 18pt) WCAG AA × Fail

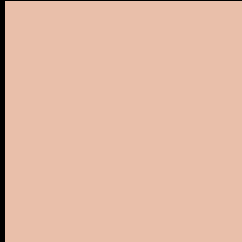
Any Text WCAG AA × Fail

Large Text (above 18pt) WCAG AAA × Fail

Any Text WCAG AAA × Fail



# Black Background



This preview shows how the XYZ color 59.4908, 57.4875, 45.9909 looks on a black background.

## Color Contrast Check

Large Text (above 18pt) WCAG AA ✓ Pass

Any Text WCAG AA ✓ Pass

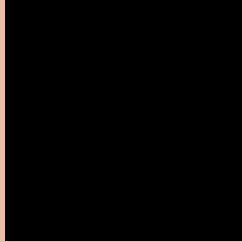
Large Text (above 18pt) WCAG AAA ✓ Pass

Any Text WCAG AAA ✓ Pass

If you want to check with other color combinations, try the [Color Contrast Checker](#).

**XYZ 59.4908, 57.4875, 45.9909**

## **Background**



This preview shows how black text looks on a background with the XYZ color 59.4908, 57.4875, 45.9909.



This preview shows how white text looks on a background with the XYZ color 59.4908, 57.4875,

45.9909.

# Color Blindness Simulation

Color vision deficiency is a very complex topic, and I could not describe the different causes any better than Wikipedia does, so if you want to learn more, you should check out their [article about color blindness](#).

## Dichromacy



### Original Color

59.4908, 57.4875, 45.9909

### Protanopia

54.3579, 57.4581, 48.2700

### Deuteranopia

58.7385, 57.4245, 46.0184



## Tritanopia

63.2380, 57.7622, 63.0746

# Trichromacy



## Original Color

59.4908, 57.4875, 45.9909

## Protanomaly

56.1962, 57.4024, 47.6531

## Deuteranomaly

59.0603, 57.5905, 46.0335

## Tritanomaly

61.8696, 57.5170, 56.5562

# Monochromacy



## Original Color

59.4908, 57.4875, 45.9909

## Achromatopsia

55.5167, 58.4078, 63.6061

## Achromatomaly

56.7011, 57.7963, 56.8825

# CSS Examples

## Text

The CSS property to change the color of the text to XYZ 59.4908, 57.4875, 45.9909 is called "color". The color property can be set on classes, ids or directly on the HTML element.

This example shows how text in the color `rgb(233, 191, 170)` looks like.

```
.text, #text, p{  
    color:rgb(233, 191, 170)  
}
```

If you want to add a text shadow in that color use the text-shadow property, you can generate a text shadow directly with our [CSS Text Shadow Generator](#).

Here you see how black text with a 4 pixel rgb(233, 191, 170) colored shadow looks like.

```
.shadow{ text-shadow: 4px 4px 2px rgb(233, 191, 170) }
```

## Border

The CSS property to change the border of an element to XYZ 59.4908, 57.4875, 45.9909 is called "border". The border property can be set on classes, ids or directly on the HTML element.

This example shows the color as border, it can be applied via the CSS property "border" or "border-color".

```
.border, #border, table{ border:4px solid rgb(233, 191, 170) }
```



If only the border color should be changed use the property `border-color`.

```
.border{ border-color:rgb(233, 191, 170) }
```

If you want to add a box shadow in that color use:

Here you see how a box with a 4 pixel `rgb(233, 191, 170)` colored shadow looks like.

```
.boxshadow{ -moz-box-shadow:4px 4px 4px  
4px rgb(233, 191, 170); -webkit-box-  
shadow:4px 4px 4px 4px rgb(233, 191, 170);  
box-shadow:4px 4px 4px 4px rgb(233, 191,  
170) }
```

# Background

The CSS property to change the background color of an element to XYZ 59.4908, 57.4875, 45.9909 is called "background". The background property can be set on classes, ids or directly on the HTML element.

```
.background, #background, body{  
background: rgb(233, 191, 170) }
```

If only the background color should be changed can be used:

```
.background{ background-color: rgb(233,  
191, 170) }
```

This example shows the color as background, it is applied via the CSS property "background".

To optimize and compress your CSS code, you can use our [online CSS compressor and optimizer](#) based on csstidy. If you want to create a linear or radial gradient as background or border, check our [CSS Gradient Generator](#).

Hey! You found this booklet interesting? Support Converting Colors with the new Membership Option!

The pro membership hides all ads, plus gives you double the colors in the color bucket, and more awesome pro features!

**[Learn more, Memberships starting at \\$2.50/m!](#)**

**Follow me  
on Twitter!**

@ConvertingColor