

Converting Colors

XYZ(59.4509, 46.4915, 22.1410)

Have a look what the booklet for
XYZ(59.4509, 46.4915, 22.1410)
contains.

XYZ(55.2409, 44.3105, 21.8609)	3
<i>Conversions</i>	4
<i>Details</i>	6
<i>Harmonies</i>	12
<i>Previews</i>	24
<i>Color Blindness Simulation</i>	28
<i>CSS Examples</i>	31

Color

**XYZ(55.2409, 44.3105,
21.8609)**

Conversions

Conversions Part 1

Format	Color
Hex	FF9673
RGB	255, 150, 115
RGB Percent	100%, 59%, 45%
CMY	0.0000, 0.4117, 0.5490
CMYK	0.00, 0.41, 0.55, 0.00
HSL	15°, 100%, 73%
HSV	15°, 55%, 100%
XYZ	55.2409, 44.3105, 21.8609
YIQ	177.4050, 73.8150, 11.3750

Conversions

Conversions Part 2

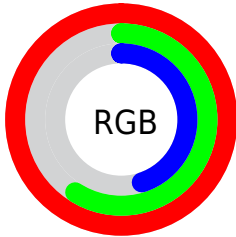
Format	Color
R_{YB}	255, 162, 115
Decimal	16750195
CIE _{Lab}	72.44, 36.08, 35.36
CIE _{LCh}	72, 50.518, 44.429
Yxy	44.3105, 0.4550, 0.3650
Android (android.graphics.Color)	4294940275 (0xFFFF9673)
YUV	177.4050, -30.7657, 68.0508
Hunter-Lab	66.5661, 31.6402, 27.1249

Details

The XYZ color **55.2409, 44.3105, 21.8609** is a light color, and the websafe version is hex **FF9966**. A complement of this color would be **50.7119, 62.0481, 103.9111**, and the grayscale version is **42.1338, 44.3280, 48.2732**.

A 20% lighter version of the original color is **70.0464, 67.7127, 45.9372**, and **27.5992, 20.5980, 7.6754** is the 20% darker color. If you saturate the color by 10%, you get **51.1648, 38.1910, 14.2369**, and if you desaturate by 10%, it is **60.2229, 51.5929, 31.7895**.

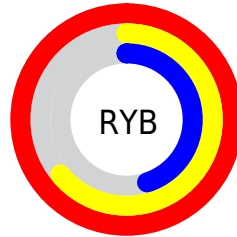
Distribution



Red (100%)

Green (59%)

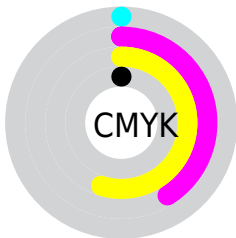
Blue (45%)



Red (100%)

Yellow (64%)

Blue (45%)

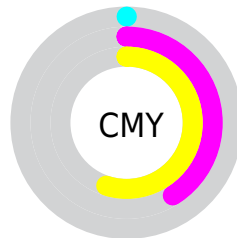


Cyan (0%)

Magenta (41%)

Yellow (55%)

Black (0%)



Cyan (0%)

Magenta (41%)

Yellow (55%)

Brightness & Saturation Gradients

These gradients show how the XYZ color 55.2409, 44.3105, 21.8609 changes by changing the brightness by 10 percent. The first figure shows a shift by +10% for each color and the second figure -10%.

Similar to the brightness gradients but the following saturation gradients show a change of the XYZ color 55.2409, 44.3105, 21.8609 by changing the saturation by 10% instead.

55.2409, 44.3105,
21.8609

55.2409, 44.3105,
21.8609

396.9460,
363.9738, 274.7488

39.8292, 30.9147,
13.5574

97.0401, 81.6848,
47.4152

27.5890, 20.5339,
7.6783

124.1583,
106.4320, 65.5031

18.1550, 12.7837,
3.8050

155.9094,
135.7318, 87.6896

11.1617, 7.2798,
1.5190

192.6588,
169.9687, 114.3931

6.2438, 3.6377,
0.2320

234.7718,
209.5269, 146.0322

3.0359, 1.4730,
0.0000

282.6138,

1.1728, 0.2696,

254.7909, 183.0255

0.0000

336.5501,
306.1451, 225.7915

■ 0.0847, 0.0000,
0.0000

■ 0.0000, 0.0000,
0.0000

■ 55.2409, 44.3105,
21.8609

■ 55.2409, 44.3105,
21.8609

■ 51.1648, 38.1910,
14.2369

■ 60.2229, 51.5929,
31.7895

■ 47.9330, 33.1655,
8.7259

■ 66.1607, 60.0886,
44.1882

■ 45.4803, 29.1680,
5.1093

■ 73.1038, 69.8530,
59.2099

■ 43.7289, 26.1216,
3.1180

■ 81.0976, 80.9362,
76.9944

■ 43.0598, 24.8999,
2.5366

■ 90.1845, 93.3854,
97.6716

95.0499, 99.9999,
108.9000

Harmonies

Analogous

The Analogous color harmony consists of three colors that are next to each other on the color wheel.



60.5026, 44.3105, 37.2568



55.2409, 44.3105, 21.8609



46.7725, 44.3105, 15.2266

Triad

The Triadic color harmony groups three colors that are evenly spaced from another and form a triangle on the color wheel.



55.2409, 44.3105, 21.8609



27.9574, 44.3105, 36.4845



46.4274, 44.3105, 111.1852

Complementary

The Complementary color scheme is a pair of colors which are on the opposite of each other on the color wheel.



55.2409, 44.3105, 21.8609



50.7119, 62.0481, 103.9111

Split Complementary

Split-complementary colors differ from the complementary color scheme. The scheme consists of three colors, the original color and two neighbors of the complement color.



37.7789, 44.3105, 110.7538



55.2409, 44.3105, 21.8609



27.8917, 44.3105, 61.2094

Square

The Square scheme is like the rectangle color scheme, but the four colors are evenly spaced on the color wheel.



55.2409, 44.3105, 21.8609



31.4481, 44.3105, 21.4643



31.2541, 44.3105, 90.2039



54.9584, 44.3105, 91.2343

Rectangle

The Rectangle color scheme consists of four colors that form a rectangle on the color wheel.



55.2409, 44.3105, 21.8609



40.8360, 44.3105, 14.4893



31.2541, 44.3105, 90.2039



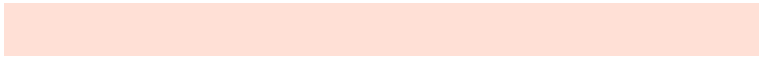
43.4220, 44.3105, 113.5915

Sweetspot

The Sweet Spot groups the original color and five complimentary colors.



55.2420, 44.3128, 21.8617



80.1669, 79.6528, 74.9016



60.2891, 38.6890, 72.0004



16.7932, 16.5436, 15.2126



0.0000, 0.0000, 0.0000



20.3446, 21.4041, 23.3091

Same Dimension

The Same Dimension uses a secret algorithm to generate beautiful new colors.



55.2420, 44.3128, 21.8617



50.7697, 37.5865, 13.5318



69.9277, 73.6842, 26.7570



18.3783, 18.7249, 18.7899



22.5984, 13.2081, 1.3583



2.2825, 1.4504, 0.1597

Inverse Universe

The Inverse Universe completely reimagines the original color for something new.



50.7119, 62.0481, 103.9111



45.7260, 56.7788, 103.1571



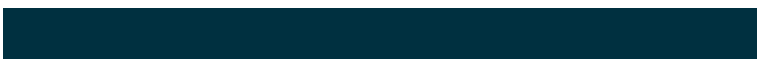
36.0269, 32.6779, 99.0161



18.1476, 19.6669, 23.0896



19.3185, 23.5466, 52.9613



1.9675, 2.4657, 5.1855

Previews

White Background



This preview shows how the XYZ color 55.2409, 44.3105, 21.8609 looks on a white background.

Color Contrast Check

Large Text (above 18pt) WCAG AA × Fail

Any Text WCAG AA × Fail

Large Text (above 18pt) WCAG AAA × Fail

Any Text WCAG AAA × Fail

Black Background



This preview shows how the XYZ color 55.2409, 44.3105, 21.8609 looks on a black background.

Color Contrast Check

Large Text (above 18pt) WCAG AA ✓ Pass

Any Text WCAG AA ✓ Pass

Large Text (above 18pt) WCAG AAA ✓ Pass

Any Text WCAG AAA ✓ Pass

If you want to check with other color combinations, try the [Color Contrast Checker](#).

XYZ 55.2409, 44.3105, 21.8609

Background



This preview shows how black text looks on a background with the XYZ color 55.2409, 44.3105, 21.8609.



This preview shows how white text looks on a background with the XYZ color 55.2409, 44.3105,

Color Blindness Simulation

Color vision deficiency is a very complex topic, and I could not describe the different causes any better than Wikipedia does, so if you want to learn more, you should check out their [article about color blindness](#).

Dichromacy



Original Color

55.2409, 44.3105, 21.8609

Protanopia

41.4245, 44.5536, 26.1551

Deuteranopia

45.2683, 44.3442, 21.2123



Tritanopia

57.5196, 44.2181, 36.9558

Trichromacy



Original Color

55.2409, 44.3105, 21.8609



Protanomaly

45.5398, 43.8575, 24.4775



Deuteranomaly

48.6550, 44.1872, 21.2938



Tritanomaly

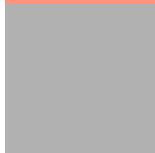
56.4814, 44.0505, 30.7250

Monochromacy



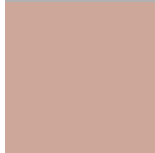
Original Color

55.2409, 44.3105, 21.8609



Achromatopsia

41.7894, 43.9657, 47.8787



Achromatomaly

44.8283, 42.9497, 36.4993

CSS Examples

Text

The CSS property to change the color of the text to XYZ 55.2409, 44.3105, 21.8609 is called "color". The color property can be set on classes, ids or directly on the HTML element.

This example shows how text in the color `rgb(255, 150, 115)` looks like.

```
.text, #text, p{  
    color:rgb(255, 150, 115)  
}
```

If you want to add a text shadow in that color use the text-shadow property, you can generate a text shadow directly with our [CSS Text Shadow Generator](#).

Here you see how black text with a 4 pixel rgb(255, 150, 115) colored shadow looks like.

```
.shadow{ text-shadow: 4px 4px 2px rgb(255, 150, 115) }
```

Border

The CSS property to change the border of an element to XYZ 55.2409, 44.3105, 21.8609 is called "border". The border property can be set on classes, ids or directly on the HTML element.

This example shows the color as border, it can be applied via the CSS property "border" or "border-color".

```
.border, #border, table{ border:4px solid rgb(255, 150, 115) }
```


If only the border color should be changed use the property `border-color`.

```
.border{ border-color:rgb(255, 150, 115) }
```

If you want to add a box shadow in that color use:

Here you see how a box with a 4 pixel `rgb(255, 150, 115)` colored shadow looks like.

```
.boxshadow{ -moz-box-shadow:4px 4px 4px  
4px rgb(255, 150, 115); -webkit-box-  
shadow:4px 4px 4px 4px rgb(255, 150, 115);  
box-shadow:4px 4px 4px 4px rgb(255, 150,  
115) }
```

Background

The CSS property to change the background color of an element to XYZ 55.2409, 44.3105, 21.8609 is called "background". The background property can be set on classes, ids or directly on the HTML element.

```
.background, #background, body{  
background: rgb(255, 150, 115) }
```

If only the background color should be changed can be used:

```
.background{ background-color: rgb(255,  
150, 115) }
```

This example shows the color as background, it is applied via the CSS property "background".

To optimize and compress your CSS code, you can use our [online CSS compressor and optimizer](#) based on csstidy. If you want to create a linear or radial gradient as background or border, check our [CSS Gradient Generator](#).

Hey! You found this booklet interesting? Support Converting Colors with the new Membership Option!

The pro membership hides all ads, plus gives you double the colors in the color bucket, and more awesome pro features!

[Learn more, Memberships starting at \\$2.50/m!](#)

**Follow me
on Twitter!**

@ConvertingColor