

Converting Colors

XYZ(59.4578, 51.9635, 59.5444)

Have a look what the booklet for
XYZ(59.4578, 51.9635, 59.5444)
contains.

XYZ(59.4750, 51.9655, 59.7190)	3
<i>Conversions</i>	4
<i>Details</i>	6
<i>Harmonies</i>	12
<i>Previews</i>	24
<i>Color Blindness Simulation</i>	28
<i>CSS Examples</i>	31

Color

**XYZ(59.4750, 51.9655,
59.7190)**

Conversions

Conversions Part 1

Format	Color
Hex	EBAEC5
RGB	235, 174, 197
RGB Percent	92%, 68%, 77%
CMY	0.0784, 0.3176, 0.2274
CMYK	0.00, 0.26, 0.16, 0.08
HSL	337°, 60%, 80%
HSV	337°, 26%, 92%
XYZ	59.4750, 51.9655, 59.7190
YIQ	194.8610, 28.9730, 20.0850

Conversions

Conversions Part 2

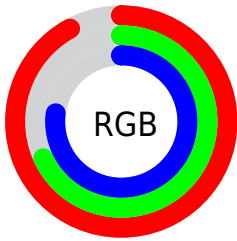
Format	Color
R _{YB}	235, 174, 197
Decimal	15445701
CIE Lab	77.26, 25.68, -2.92
CIE LCh	77, 25.845, 353.516
Yxy	51.9655, 0.3475, 0.3036
Android (android.graphics.Color)	4293635781 (0xFFEBAEC5)
YUV	194.8610, 1.0545, 35.2019
Hunter-Lab	72.0871, 21.1179, 1.3435

Details

The XYZ color **59.4750, 51.9655, 59.7190** is a light color, and the websafe version is hex **CC9999**. A complement of this color would be **59.0497, 73.1700, 73.3018**, and the grayscale version is **51.7721, 54.4683, 59.3160**.

A 20% lighter version of the original color is **87.4262, 85.0094, 105.5665**, and **30.1554, 25.1229, 29.2464** is the 20% darker color. If you saturate the color by 10%, you get **53.7292, 43.0290, 49.9253**, and if you desaturate by 10%, it is **66.1809, 62.5603, 70.6378**.

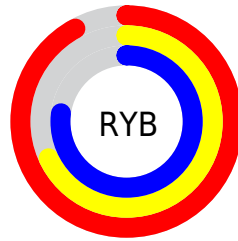
Distribution



Red (92%)

Green (68%)

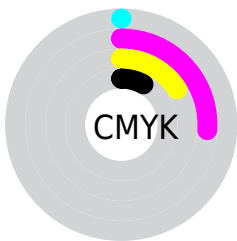
Blue (77%)



Red (92%)

Yellow (68%)

Blue (77%)

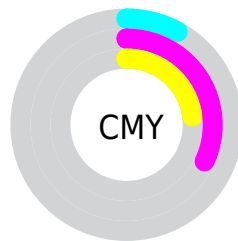


Cyan (0%)

Magenta (26%)

Yellow (16%)

Black (8%)



Cyan (8%)

Magenta (32%)

Yellow (23%)

Brightness & Saturation Gradients

These gradients show how the XYZ color 59.4750, 51.9655, 59.7190 changes by changing the brightness by 10 percent. The first figure shows a shift by +10% for each color and the second figure -10%.

Similar to the brightness gradients but the following saturation gradients show a change of the XYZ color 59.4750, 51.9655, 59.7190 by changing the saturation by 10% instead.

59.4750, 51.9655,
59.7190

59.4750, 51.9655,
59.7190

412.5257,
394.3034, 441.3371

43.2435, 36.9776,
42.7684

103.1784, 93.0804,
105.9613

30.2715, 25.1901,
29.3734

131.3810,
119.9761, 136.0901

20.1939, 16.2188,
19.1154

164.3046,
151.6099, 171.4486

12.6451, 9.6791,
11.5761

202.3146,
188.3661, 212.4555

7.2599, 5.1867,
6.3367

245.7763,
230.6292, 259.5292

3.6730, 2.3572,
2.9788

295.0552,

1.5188, 0.8037,

278.7835, 313.0884

1.0838

350.5166,
333.2134, 373.5515

■ 0.3386, 0.0000,
0.0000

■ 0.0000, 0.0000,
0.0000

■ 59.4750, 51.9655,
59.7190

■ 59.4750, 51.9655,
59.7190

■ 53.7292, 43.0290,
49.9253

■ 66.1809, 62.5603,
70.6378

■ 48.8931, 35.6592,
41.2153

■ 73.8853, 74.8848,
82.7146

■ 44.9182, 29.7662,
33.5496

■ 82.6299, 89.0148,
95.9848

■ 41.7495, 25.2481,
26.8849

■ 88.0711, 96.4023,
108.5734

■ 39.3253, 21.9900,
21.1741

■ 37.5740, 19.8578,
16.3654

■ 36.4080, 18.6861,
12.3999

■ 36.0474, 18.3768,
11.0098

Harmonies

Analogous

The Analogous color harmony consists of three colors that are next to each other on the color wheel.



57.4541, 51.9655, 74.4044



59.4750, 51.9655, 59.7190



58.6523, 51.9655, 46.3785

Triad

The Triadic color harmony groups three colors that are evenly spaced from another and form a triangle on the color wheel.



59.4750, 51.9655, 59.7190



45.6871, 51.9655, 35.0698



43.9408, 51.9655, 81.4754

Complementary

The Complementary color scheme is a pair of colors which are on the opposite of each other on the color wheel.



59.4750, 51.9655, 59.7190



59.0497, 73.1700, 73.3018

Split Complementary

Split-complementary colors differ from the complementary color scheme. The scheme consists of three colors, the original color and two neighbors of the complement color.



41.1610, 51.9655, 68.1810



59.4750, 51.9655, 59.7190



42.1211, 51.9655, 41.8597

Square

The Square scheme is like the rectangle color scheme, but the four colors are evenly spaced on the color wheel.



59.4750, 51.9655, 59.7190



50.4753, 51.9655, 33.5714



40.5177, 51.9655, 53.5560



48.3236, 51.9655, 88.2509

Rectangle

The Rectangle color scheme consists of four colors that form a rectangle on the color wheel.



59.4750, 51.9655, 59.7190



56.6274, 51.9655, 39.7977



40.5177, 51.9655, 53.5560



42.8001, 51.9655, 77.5239

Sweetspot

The Sweet Spot groups the original color and five complimentary colors.



59.4765, 51.9679, 59.7201



86.9047, 86.8762, 96.4221



57.1744, 50.2131, 85.2763



18.2926, 18.1004, 20.1582



0.0000, 0.0000, 0.0000



20.3446, 21.4041, 23.3091

Same Dimension

The Same Dimension uses a secret algorithm to generate beautiful new colors.



59.4765, 51.9679, 59.7201



67.8660, 56.7353, 65.6089



58.4503, 53.8158, 47.3542



15.3004, 15.1480, 16.8671



20.1190, 10.2503, 6.4282



1.6252, 0.8231, 0.7439

Inverse Universe

The Inverse Universe completely reimagines the original color for something new.



59.4765, 51.9679, 59.7201



67.8660, 56.7353, 65.6089



60.1640, 70.4208, 89.0193



15.3004, 15.1480, 16.8671



20.1190, 10.2503, 6.4282



1.6252, 0.8231, 0.7439

Previews

White Background



This preview shows how the XYZ color 59.4750, 51.9655, 59.7190 looks on a white background.

Color Contrast Check

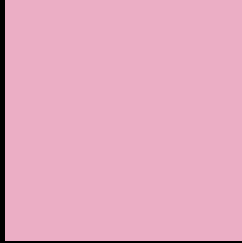
Large Text (above 18pt) WCAG AA × Fail

Any Text WCAG AA × Fail

Large Text (above 18pt) WCAG AAA × Fail

Any Text WCAG AAA × Fail

Black Background



This preview shows how the XYZ color 59.4750, 51.9655, 59.7190 looks on a black background.

Color Contrast Check

Large Text (above 18pt) WCAG AA ✓ Pass

Any Text WCAG AA ✓ Pass

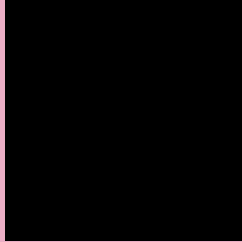
Large Text (above 18pt) WCAG AAA ✓ Pass

Any Text WCAG AAA ✓ Pass

If you want to check with other color combinations, try the [Color Contrast Checker](#).

XYZ 59.4750, 51.9655, 59.7190

Background



This preview shows how black text looks on a background with the XYZ color 59.4750, 51.9655, 59.7190.



This preview shows how white text looks on a background with the XYZ color 59.4750, 51.9655,

59.7190.

Color Blindness Simulation

Color vision deficiency is a very complex topic, and I could not describe the different causes any better than Wikipedia does, so if you want to learn more, you should check out their [article about color blindness](#).

Dichromacy



Original Color

59.4750, 51.9655, 59.7190

Protanopia

50.9111, 52.2791, 66.4390

Deuteranopia

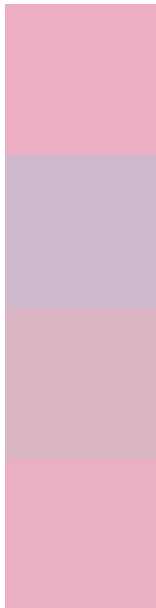
53.2117, 52.0480, 58.8715



Tritanopia

58.4470, 51.8265, 55.0671

Trichromacy



Original Color

59.4750, 51.9655, 59.7190

Protanomaly

53.3736, 51.7146, 63.6687

Deuteranomaly

55.4011, 51.9387, 59.3298

Tritanomaly

58.7761, 51.9581, 56.8003

Monochromacy



Original Color

59.4750, 51.9655, 59.7190

Achromatopsia

51.8711, 54.5724, 59.4294

Achromatomaly

54.3125, 53.2278, 59.6360

CSS Examples

Text

The CSS property to change the color of the text to XYZ 59.4750, 51.9655, 59.7190 is called "color". The color property can be set on classes, ids or directly on the HTML element.

This example shows how text in the color `rgb(235, 174, 197)` looks like.

```
.text, #text, p{  
    color:rgb(235, 174, 197)  
}
```

If you want to add a text shadow in that color use the text-shadow property, you can generate a text shadow directly with our [CSS Text Shadow Generator](#).

Here you see how black text with a 4 pixel rgb(235, 174, 197) colored shadow looks like.

```
.shadow{ text-shadow: 4px 4px 2px rgb(235, 174, 197) }
```

Border

The CSS property to change the border of an element to XYZ 59.4750, 51.9655, 59.7190 is called "border". The border property can be set on classes, ids or directly on the HTML element.

This example shows the color as border, it can be applied via the CSS property "border" or "border-color".

```
.border, #border, table{ border:4px solid rgb(235, 174, 197) }
```


If only the border color should be changed use the property `border-color`.

```
.border{ border-color:rgb(235, 174, 197) }
```

If you want to add a box shadow in that color use:

Here you see how a box with a 4 pixel `rgb(235, 174, 197)` colored shadow looks like.

```
.boxshadow{ -moz-box-shadow:4px 4px 4px  
4px rgb(235, 174, 197); -webkit-box-  
shadow:4px 4px 4px 4px rgb(235, 174, 197);  
box-shadow:4px 4px 4px 4px rgb(235, 174,  
197) }
```

Background

The CSS property to change the background color of an element to XYZ 59.4750, 51.9655, 59.7190 is called "background". The background property can be set on classes, ids or directly on the HTML element.

```
.background, #background, body{  
background: rgb(235, 174, 197) }
```

If only the background color should be changed can be used:

```
.background{ background-color: rgb(235,  
174, 197) }
```

This example shows the color as background, it is applied via the CSS property "background".

To optimize and compress your CSS code, you can use our [online CSS compressor and optimizer](#) based on csstidy. If you want to create a linear or radial gradient as background or border, check our [CSS Gradient Generator](#).

Hey! You found this booklet interesting? Support Converting Colors with the new Membership Option!

The pro membership hides all ads, plus gives you double the colors in the color bucket, and more awesome pro features!

[Learn more, Memberships starting at \\$2.50/m!](#)

**Follow me
on Twitter!**

@ConvertingColor