

Converting Colors

XYZ(59.4673, 57.4626, 53.8627)

Have a look what the booklet for
XYZ(59.4673, 57.4626, 53.8627)
contains.

XYZ(59.6015, 57.6960, 53.8941)	3
<i>Conversions</i>	4
<i>Details</i>	6
<i>Harmonies</i>	12
<i>Previews</i>	24
<i>Color Blindness Simulation</i>	28
<i>CSS Examples</i>	31

Color

**XYZ(59.6015, 57.6960,
53.8941)**

Conversions

Conversions Part 1

Format	Color
Hex	E4C0B9
RGB	228, 192, 185
RGB Percent	89%, 75%, 73%
CMY	0.1059, 0.2470, 0.2745
CMYK	0.00, 0.16, 0.19, 0.11
HSL	10°, 44%, 81%
HSV	10°, 19%, 89%
XYZ	59.6015, 57.6960, 53.8941
YIQ	201.9660, 23.7030, 5.4550

Conversions

Conversions Part 2

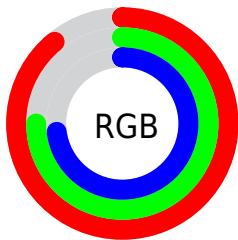
Format	Color
R _Y B	228, 193, 185
Decimal	14991545
CIE Lab	80.57, 11.72, 8.29
CIE LCh	81, 14.356, 35.286
Yxy	57.6960, 0.3482, 0.3370
Android (android.graphics.Color)	4293181625 (0xFFE4C0B9)
YUV	201.9660, -8.3642, 22.8318
Hunter-Lab	75.9579, 7.1364, 11.1027

Details

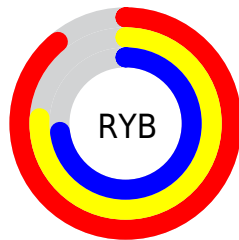
The XYZ color **59.6015, 57.6960, 53.8941** is a light color, and the websafe version is hex **FFCCCC**. A complement of this color would be **59.8672, 67.6271, 83.2973**, and the grayscale version is **56.1593, 59.0839, 64.3424**.

A 20% lighter version of the original color is **90.6846, 94.7457, 96.7272**, and **30.2666, 28.6136, 25.7575** is the 20% darker color. If you saturate the color by 10%, you get **53.4627, 48.9661, 40.9100**, and if you desaturate by 10%, it is **66.6729, 67.6725, 69.0947**.

Distribution



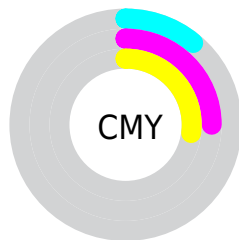
- Red (89%)
- Green (75%)
- Blue (73%)



- Red (89%)
- Yellow (76%)
- Blue (73%)



- Cyan (0%)
- Magenta (16%)
- Yellow (19%)
- Black (11%)



- Cyan (11%)
- Magenta (25%)
- Yellow (27%)

Brightness & Saturation Gradients

These gradients show how the XYZ color 59.6015, 57.6960, 53.8941 changes by changing the brightness by 10 percent. The first figure shows a shift by +10% for each color and the second figure -10%.

Similar to the brightness gradients but the following saturation gradients show a change of the XYZ color 59.6015, 57.6960, 53.8941 by changing the saturation by 10% instead.

■ 59.6015, 57.6960,
53.8941

■ 59.6015, 57.6960,
53.8941

412.9857,
416.0522, 418.8692

■ 43.3457, 41.5643,
38.1244

■ 103.3610,
101.4800, 97.3736

■ 30.3522, 28.7603,
25.7767

131.5955,
129.9012, 125.9204

■ 20.2555, 18.8996,
16.4324

164.5536,
163.1875, 159.5634

■ 12.6902, 11.5977,
9.6730

202.6006,
201.7236, 198.7211

■ 7.2911, 6.4704,
5.0799

246.1020,
245.8937, 243.8119

■ 3.6928, 3.1332,
2.2347

295.4231,

■ 1.5298, 1.2016,

296.0822, 295.2546

0.6943

350.9292,
352.6736, 353.4675

■ 0.3460, 0.0630,
0.0000

■ 0.0000, 0.0000,
0.0000

■ 59.6015, 57.6960,
53.8941

■ 59.6015, 57.6960,
53.8941

■ 53.4627, 48.9661,
40.9100

■ 66.6729, 67.6725,
69.0947

■ 48.2128, 41.4260,
30.0351

■ 74.7091, 78.9339,
86.6048

■ 43.8113, 35.0264,
21.1587

■ 83.7462, 91.5264,
106.5169

■ 40.2129, 29.7113,
14.1584

■ 85.8051, 95.2341,
108.4673

■ 37.3679, 25.4199,
8.8985

■ 35.2209, 22.0854,
5.2247

■ 33.7083, 19.6328,
2.9554

■ 32.7453, 17.9716,
1.8177

■ 32.6610, 17.8258,
1.7193

Harmonies

Analogous

The Analogous color harmony consists of three colors that are next to each other on the color wheel.



60.6844, 57.6960, 61.3360



59.6015, 57.6960, 53.8941



57.2449, 57.6960, 49.1857

Triad

The Triadic color harmony groups three colors that are evenly spaced from another and form a triangle on the color wheel.



59.6015, 57.6960, 53.8941



49.8438, 57.6960, 56.2691



55.3627, 57.6960, 80.4309

Complementary

The Complementary color scheme is a pair of colors which are on the opposite of each other on the color wheel.



59.6015, 57.6960, 53.8941



59.8672, 67.6271, 83.2973

Split Complementary

Split-complementary colors differ from the complementary color scheme. The scheme consists of three colors, the original color and two neighbors of the complement color.



52.5001, 57.6960, 78.7690



59.6015, 57.6960, 53.8941



49.3803, 57.6960, 64.3300

Square

The Square scheme is like the rectangle color scheme, but the four colors are evenly spaced on the color wheel.



59.6015, 57.6960, 53.8941



51.6256, 57.6960, 50.4684



50.3359, 57.6960, 72.6832



58.1817, 57.6960, 77.0411

Rectangle

The Rectangle color scheme consists of four colors that form a rectangle on the color wheel.



59.6015, 57.6960, 53.8941



55.3060, 57.6960, 47.9780



50.3359, 57.6960, 72.6832



54.3733, 57.6960, 80.4475

Sweetspot

The Sweet Spot groups the original color and five complimentary colors.



59.6031, 57.6986, 53.8953



88.7330, 91.1522, 95.1220



62.4691, 56.4425, 76.3940



18.8513, 19.3121, 20.0533



0.0000, 0.0000, 0.0000



20.3446, 21.4041, 23.3091

Same Dimension

The Same Dimension uses a secret algorithm to generate beautiful new colors.



59.6031, 57.6986, 53.8953



73.2917, 69.3575, 61.9581



64.5342, 67.5608, 55.5390



14.5657, 14.7452, 14.9829



18.9162, 10.4066, 1.0117



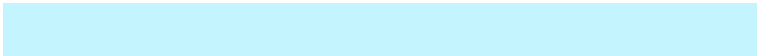
1.4554, 0.8841, 0.0939

Inverse Universe

The Inverse Universe completely reimagines the original color for something new.



59.8672, 67.6271, 83.2973



73.6938, 84.5782, 107.0489



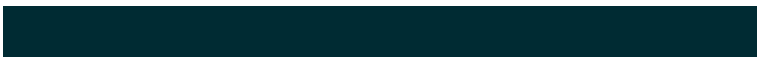
54.6778, 57.2482, 81.5675



14.5971, 15.9156, 18.4470



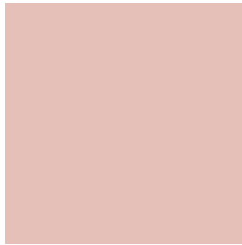
18.9010, 24.8641, 46.1862



1.4503, 1.9445, 3.4309

Previews

White Background



This preview shows how the XYZ color 59.6015, 57.6960, 53.8941 looks on a white background.

Color Contrast Check

Large Text (above 18pt) WCAG AA × Fail

Any Text WCAG AA × Fail

Large Text (above 18pt) WCAG AAA × Fail

Any Text WCAG AAA × Fail

Black Background



This preview shows how the XYZ color 59.6015, 57.6960, 53.8941 looks on a black background.

Color Contrast Check

Large Text (above 18pt) WCAG AA ✓ Pass

Any Text WCAG AA ✓ Pass

Large Text (above 18pt) WCAG AAA ✓ Pass

Any Text WCAG AAA ✓ Pass

If you want to check with other color combinations, try the [Color Contrast Checker](#).

XYZ 59.6015, 57.6960, 53.8941

Background



This preview shows how black text looks on a background with the XYZ color 59.6015, 57.6960, 53.8941.

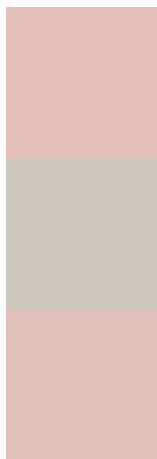


This preview shows how white text looks on a background with the XYZ color 59.6015, 57.6960,

Color Blindness Simulation

Color vision deficiency is a very complex topic, and I could not describe the different causes any better than Wikipedia does, so if you want to learn more, you should check out their [article about color blindness](#).

Dichromacy



Original Color

59.6015, 57.6960, 53.8941

Protanopia

55.0623, 57.6428, 56.3682

Deuteranopia

58.8783, 57.6503, 53.9233



Tritanopia

61.7298, 57.5778, 64.9869

Trichromacy



Original Color

59.6015, 57.6960, 53.8941

Protanomaly

56.5486, 57.4068, 55.6771

Deuteranomaly

59.1910, 57.8115, 53.9380

Tritanomaly

60.8046, 57.5161, 60.7203

Monochromacy



Original Color

59.6015, 57.6960, 53.8941

Achromatopsia

56.1383, 59.0619, 64.3184

Achromatomaly

57.0219, 58.2226, 60.4573

CSS Examples

Text

The CSS property to change the color of the text to XYZ 59.6015, 57.6960, 53.8941 is called "color". The color property can be set on classes, ids or directly on the HTML element.

This example shows how text in the color `rgb(228, 192, 185)` looks like.

```
.text, #text, p{  
    color:rgb(228, 192, 185)  
}
```

If you want to add a text shadow in that color use the text-shadow property, you can generate a text shadow directly with our [CSS Text Shadow Generator](#).

Here you see how black text with a 4 pixel rgb(228, 192, 185) colored shadow looks like.

```
.shadow{ text-shadow: 4px 4px 2px rgb(228, 192, 185) }
```

Border

The CSS property to change the border of an element to XYZ 59.6015, 57.6960, 53.8941 is called "border". The border property can be set on classes, ids or directly on the HTML element.

This example shows the color as border, it can be applied via the CSS property "border" or "border-color".

```
.border, #border, table{ border:4px solid rgb(228, 192, 185) }
```


If only the border color should be changed use the property border-color.

```
.border{ border-color:rgb(228, 192, 185) }
```

If you want to add a box shadow in that color use:

Here you see how a box with a 4 pixel rgb(228, 192, 185) colored shadow looks like.

```
.boxshadow{ -moz-box-shadow:4px 4px 4px  
4px rgb(228, 192, 185); -webkit-box-  
shadow:4px 4px 4px 4px rgb(228, 192, 185);  
box-shadow:4px 4px 4px 4px rgb(228, 192,  
185) }
```

Background

The CSS property to change the background color of an element to XYZ 59.6015, 57.6960, 53.8941 is called "background". The background property can be set on classes, ids or directly on the HTML element.

```
.background, #background, body{  
background: rgb(228, 192, 185) }
```

If only the background color should be changed can be used:

```
.background{ background-color: rgb(228,  
192, 185) }
```

This example shows the color as background, it is applied via the CSS property "background".

To optimize and compress your CSS code, you can use our [online CSS compressor and optimizer](#) based on csstidy. If you want to create a linear or radial gradient as background or border, check our [CSS Gradient Generator](#).

Hey! You found this booklet interesting? Support Converting Colors with the new Membership Option!

The pro membership hides all ads, plus gives you double the colors in the color bucket, and more awesome pro features!

[Learn more, Memberships starting at \\$2.50/m!](#)

**Follow me
on Twitter!**

@ConvertingColor