

Converting Colors

XYZ(59.4831, 60.0646, 58.9024)

Have a look what the booklet for
XYZ(59.4831, 60.0646, 58.9024)
contains.

XYZ(59.4933, 60.2189, 58.9398)	3
<i>Conversions</i>	4
<i>Details</i>	6
<i>Harmonies</i>	12
<i>Previews</i>	24
<i>Color Blindness Simulation</i>	28
<i>CSS Examples</i>	31

Color

**XYZ(59.4933, 60.2189,
58.9398)**

Conversions

Conversions Part 1

Format	Color
Hex	DBC8C1
RGB	219, 200, 193
RGB Percent	86%, 78%, 76%
CMY	0.1412, 0.2157, 0.2431
CMYK	0.00, 0.09, 0.12, 0.14
HSL	16°, 27%, 81%
HSV	16°, 12%, 86%
XYZ	59.4933, 60.2189, 58.9398
YIQ	204.8830, 13.5710, 1.8510

Conversions

Conversions Part 2

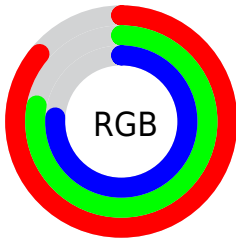
Format	Color
R _Y B	219, 203, 193
Decimal	14403777
CIE Lab	81.96, 5.48, 5.89
CIE LCh	82, 8.047, 47.094
Yxy	60.2189, 0.3330, 0.3371
Android (android.graphics.Color)	4292593857 (0xFFDBC8C1)
YUV	204.8830, -5.8583, 12.3806
Hunter-Lab	77.6008, 1.0470, 9.2883

Details

The XYZ color **59.4933, 60.2189, 58.9398** is a light color, and the websafe version is hex **CCCCCC**. A complement of this color would be **58.3216, 63.5375, 76.2084**, and the grayscale version is **57.9854, 61.0051, 66.4346**.

A 20% lighter version of the original color is **94.0989, 99.6196, 103.8915**, and **30.3224, 30.3437, 29.0697** is the 20% darker color. If you saturate the color by 10%, you get **53.7155, 52.2874, 45.8401**, and if you desaturate by 10%, it is **66.0241, 69.0761, 74.0768**.

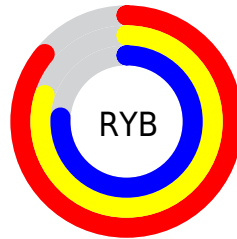
Distribution



Red (86%)

Green (78%)

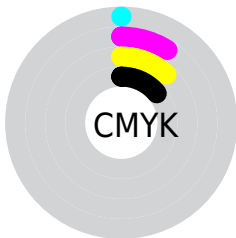
Blue (76%)



Red (86%)

Yellow (80%)

Blue (76%)

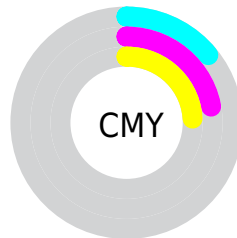


Cyan (0%)

Magenta (9%)

Yellow (12%)

Black (14%)



Cyan (14%)

Magenta (22%)

Yellow (24%)

Brightness & Saturation Gradients

These gradients show how the XYZ color 59.4933, 60.2189, 58.9398 changes by changing the brightness by 10 percent. The first figure shows a shift by +10% for each color and the second figure -10%.

Similar to the brightness gradients but the following saturation gradients show a change of the XYZ color 59.4933, 60.2189, 58.9398 by changing the saturation by 10% instead.

■ 59.4933, 60.2189,
58.9398

■ 59.4933, 60.2189,
58.9398

412.5923,
425.4042, 438.3745

■ 43.2582, 43.5951,
42.1450

■ 103.2048,
105.1471, 104.8184

■ 30.2832, 30.3523,
28.8884

131.4120,
134.2204, 134.7393

■ 20.2028, 20.1062,
18.7516

164.3406,
168.2122, 169.8726

■ 12.6516, 12.4722,
11.3159

202.3560,
207.5070, 210.6369

■ 7.2645, 7.0661,
6.1629

245.8235,
252.4892, 257.4507

■ 3.6758, 3.5035,
2.8740

295.1084,

■ 1.5204, 1.3999,

303.5432, 310.7325

1.0307

350.5763,
361.0534, 370.9009

■ 0.3397, 0.2167,
0.0000

■ 0.0000, 0.0000,
0.0000

■ 59.4933, 60.2189,
58.9398

■ 59.4933, 60.2189,
58.9398

■ 53.7155, 52.2874,
45.8401

■ 66.0241, 69.0761,
74.0768

■ 48.6580, 45.2436,
34.6864

■ 73.3290, 78.8797,
91.3293

■ 44.2930, 39.0583,
25.3862

■ 80.8330, 89.4190,
107.6070

■ 40.5888, 33.6978,
17.8380

■ 83.0236, 93.8002,
108.3372

■ 37.5113, 29.1263,
11.9303

■ 35.0229, 25.3049,
7.5387

■ 33.0815, 22.1913,
4.5207

■ 31.6387, 19.7383,
2.7061

■ 30.7775, 18.1878,
1.8885

Harmonies

Analogous

The Analogous color harmony consists of three colors that are next to each other on the color wheel.



60.4217, 60.2189, 62.8516



59.4933, 60.2189, 58.9398



57.9703, 60.2189, 56.8501

Triad

The Triadic color harmony groups three colors that are evenly spaced from another and form a triangle on the color wheel.



59.4933, 60.2189, 58.9398



54.1052, 60.2189, 63.4969



58.2036, 60.2189, 74.9409

Complementary

The Complementary color scheme is a pair of colors which are on the opposite of each other on the color wheel.



59.4933, 60.2189, 58.9398



58.3216, 63.5375, 76.2084

Split Complementary

Split-complementary colors differ from the complementary color scheme. The scheme consists of three colors, the original color and two neighbors of the complement color.



56.5084, 60.2189, 75.1348



59.4933, 60.2189, 58.9398



54.1648, 60.2189, 68.3619

Square

The Square scheme is like the rectangle color scheme, but the four colors are evenly spaced on the color wheel.



59.4933, 60.2189, 58.9398



54.8725, 60.2189, 59.3920



55.0370, 60.2189, 72.6757



59.6670, 60.2189, 72.1582

Rectangle

The Rectangle color scheme consists of four colors that form a rectangle on the color wheel.



59.4933, 60.2189, 58.9398



56.8330, 60.2189, 56.7001



55.0370, 60.2189, 72.6757



57.6414, 60.2189, 75.3157

Sweetspot

The Sweet Spot groups the original color and five complimentary colors.



59.4950, 60.2216, 58.9411



91.1194, 94.6974, 99.7021



60.1761, 57.9576, 70.3474



19.3493, 20.0609, 20.9817



0.0000, 0.0000, 0.0000



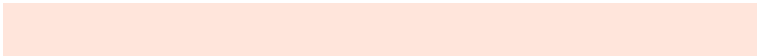
20.3446, 21.4041, 23.3091

Same Dimension

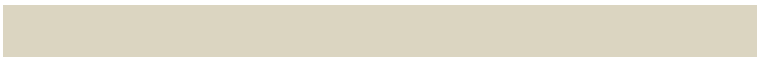
The Same Dimension uses a secret algorithm to generate beautiful new colors.



59.4950, 60.2216, 58.9411



82.0622, 82.3832, 78.8015



62.6171, 66.4659, 59.9818



13.3400, 13.6193, 13.6513



18.3272, 10.9400, 1.1457



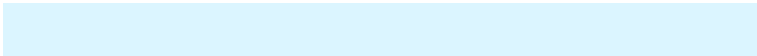
1.2582, 0.8504, 0.0978

Inverse Universe

The Inverse Universe completely reimagines the original color for something new.



58.3216, 63.5375, 76.2084



80.1221, 87.8632, 107.3442



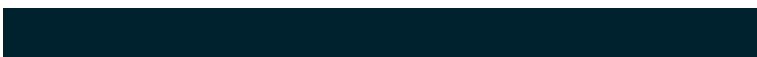
55.2180, 57.3302, 75.1739



13.1328, 14.2053, 16.7019



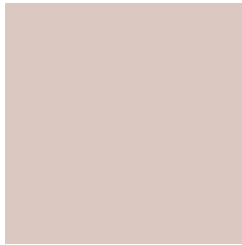
15.1306, 18.1307, 42.4405



1.0500, 1.3141, 2.7728

Previews

White Background



This preview shows how the XYZ color 59.4933, 60.2189, 58.9398 looks on a white background.

Color Contrast Check

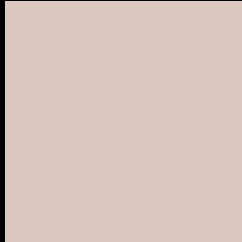
Large Text (above 18pt) WCAG AA × Fail

Any Text WCAG AA × Fail

Large Text (above 18pt) WCAG AAA × Fail

Any Text WCAG AAA × Fail

Black Background



This preview shows how the XYZ color 59.4933, 60.2189, 58.9398 looks on a black background.

Color Contrast Check

Large Text (above 18pt) WCAG AA ✓ Pass

Any Text WCAG AA ✓ Pass

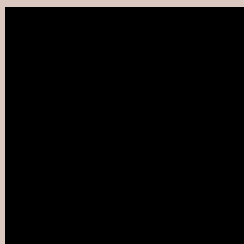
Large Text (above 18pt) WCAG AAA ✓ Pass

Any Text WCAG AAA ✓ Pass

If you want to check with other color combinations, try the [Color Contrast Checker](#).

XYZ 59.4933, 60.2189, 58.9398

Background



This preview shows how black text looks on a background with the XYZ color 59.4933, 60.2189, 58.9398.

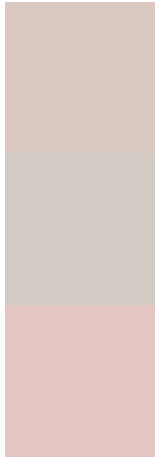


This preview shows how white text looks on a background with the XYZ color 59.4933, 60.2189,

Color Blindness Simulation

Color vision deficiency is a very complex topic, and I could not describe the different causes any better than Wikipedia does, so if you want to learn more, you should check out their [article about color blindness](#).

Dichromacy



Original Color

59.4933, 60.2189, 58.9398

Protanopia

57.7846, 60.3536, 60.2336

Deuteranopia

61.3824, 60.1584, 59.4155



Tritanopia

61.9741, 60.2156, 70.6437

Trichromacy



Original Color

59.4933, 60.2189, 58.9398

Protanomaly

58.2987, 60.2822, 59.6019

Deuteranomaly

60.6722, 60.1305, 59.4475

Tritanomaly

61.0323, 60.1681, 66.1545

Monochromacy



Original Color

59.4933, 60.2189, 58.9398

Achromatopsia

58.0276, 61.0496, 66.4830

Achromatomaly

58.4769, 60.6306, 63.8791

CSS Examples

Text

The CSS property to change the color of the text to XYZ 59.4933, 60.2189, 58.9398 is called "color". The color property can be set on classes, ids or directly on the HTML element.

This example shows how text in the color rgb(219, 200, 193) looks like.

```
.text, #text, p{  
    color:rgb(219, 200, 193)  
}
```

If you want to add a text shadow in that color use the text-shadow property, you can generate a text shadow directly with our [CSS Text Shadow Generator](#).

Here you see how black text with a 4 pixel rgb(219, 200, 193) colored shadow looks like.

```
.shadow{ text-shadow: 4px 4px 2px rgb(219, 200, 193) }
```

Border

The CSS property to change the border of an element to XYZ 59.4933, 60.2189, 58.9398 is called "border". The border property can be set on classes, ids or directly on the HTML element.

This example shows the color as border, it can be applied via the CSS property "border" or "border-color".

```
.border, #border, table{ border:4px solid rgb(219, 200, 193) }
```


If only the border color should be changed use the property `border-color`.

```
.border{ border-color:rgb(219, 200, 193) }
```

If you want to add a box shadow in that color use:

Here you see how a box with a 4 pixel `rgb(219, 200, 193)` colored shadow looks like.

```
.boxshadow{ -moz-box-shadow:4px 4px 4px  
4px rgb(219, 200, 193); -webkit-box-  
shadow:4px 4px 4px 4px rgb(219, 200, 193);  
box-shadow:4px 4px 4px 4px rgb(219, 200,  
193) }
```

Background

The CSS property to change the background color of an element to XYZ 59.4933, 60.2189, 58.9398 is called "background". The background property can be set on classes, ids or directly on the HTML element.

```
.background, #background, body{  
background: rgb(219, 200, 193) }
```

If only the background color should be changed can be used:

```
.background{ background-color: rgb(219,  
200, 193) }
```

This example shows the color as background, it is applied via the CSS property "background".

To optimize and compress your CSS code, you can use our [online CSS compressor and optimizer](#) based on csstidy. If you want to create a linear or radial gradient as background or border, check our [CSS Gradient Generator](#).

Hey! You found this booklet interesting? Support Converting Colors with the new Membership Option!

The pro membership hides all ads, plus gives you double the colors in the color bucket, and more awesome pro features!

[Learn more, Memberships starting at \\$2.50/m!](#)

**Follow me
on Twitter!**

@ConvertingColor