

Converting Colors

XYZ(59.5035, 60.5260, 62.3263)

Have a look what the booklet for
XYZ(59.5035, 60.5260, 62.3263)
contains.

XYZ(59.5143, 60.4957, 62.5729)	3
<i>Conversions</i>	4
<i>Details</i>	6
<i>Harmonies</i>	12
<i>Previews</i>	24
<i>Color Blindness Simulation</i>	28
<i>CSS Examples</i>	31

Color

**XYZ(59.5143, 60.4957,
62.5729)**

Conversions

Conversions Part 1

Format	Color
Hex	D8C9C7
RGB	216, 201, 199
RGB Percent	85%, 79%, 78%
CMY	0.1529, 0.2117, 0.2196
CMYK	0.00, 0.07, 0.08, 0.15
HSL	7°, 18%, 81%
HSV	7°, 8%, 85%
XYZ	59.5143, 60.4957, 62.5729
YIQ	205.2570, 9.5820, 2.5580

Conversions

Conversions Part 2

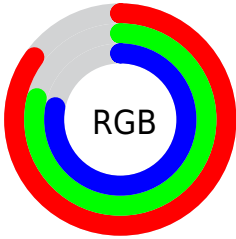
Format	Color
R _Y B	216, 201, 199
Decimal	14207431
CIE Lab	82.11, 4.88, 2.87
CIE LCh	82, 5.664, 30.448
Yxy	60.4957, 0.3260, 0.3313
Android (android.graphics.Color)	4292397511 (0xFFD8C9C7)
YUV	205.2570, -3.0847, 9.4216
Hunter-Lab	77.7790, 0.4700, 6.7467

Details

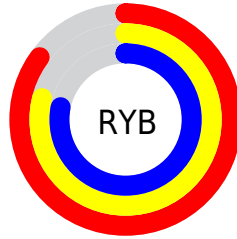
The XYZ color **59.5143, 60.4957, 62.5729** is a light color, and the websafe version is hex **CCCCCC**. A complement of this color would be **59.9942, 65.1919, 74.3876**, and the grayscale version is **58.2080, 61.2394, 66.6897**.

A 20% lighter version of the original color is **95.0500, 100.0000, 108.9000**, and **30.2425, 30.4888, 31.0790** is the 20% darker color. If you saturate the color by 10%, you get **53.0130, 51.2253, 48.8984**, and if you desaturate by 10%, it is **66.9260, 71.0158, 78.3086**.

Distribution



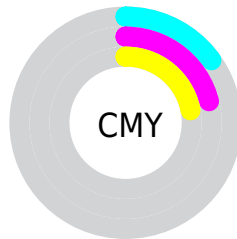
- Red (85%)
- Green (79%)
- Blue (78%)



- Red (85%)
- Yellow (79%)
- Blue (78%)



- Cyan (0%)
- Magenta (7%)
- Yellow (8%)
- Black (15%)



- Cyan (15%)
- Magenta (21%)
- Yellow (22%)

Brightness & Saturation Gradients

These gradients show how the XYZ color 59.5143, 60.4957, 62.5729 changes by changing the brightness by 10 percent. The first figure shows a shift by +10% for each color and the second figure -10%.

Similar to the brightness gradients but the following saturation gradients show a change of the XYZ color 59.5143, 60.4957, 62.5729 by changing the saturation by 10% instead.

■ 59.5143, 60.4957,
62.5729

■ 59.5143, 60.4957,
62.5729

412.6687,
426.4225, 452.0830

■ 43.2752, 43.8183,
45.0570

103.2351,
105.5484, 110.1327

■ 30.2966, 30.5277,
31.1590

131.4476,
134.6925, 141.0137

■ 20.2130, 20.2395,
20.4605

164.3819,
168.7610, 177.1868

■ 12.6591, 12.5692,
12.5428

202.4035,
208.1382, 219.0706

■ 7.2696, 7.1326,
6.9875

245.8775,
253.2086, 267.0836

■ 3.6791, 3.5452,
3.3760

295.1695,

■ 1.5222, 1.4225,

304.3565, 321.6442

1.2897

350.6448,
361.9663, 383.1712

■ 0.3409, 0.2332,
0.0533

■ 0.0000, 0.0000,
0.0000

■ 59.5143, 60.4957,
62.5729

■ 59.5143, 60.4957,
62.5729

■ 53.0130, 51.2253,
48.8984

■ 66.9260, 71.0158,
78.3086

■ 47.3820, 43.1505,
37.1959

■ 75.2762, 82.8213,
96.1819

■ 42.5858, 36.2249,
27.3755

■ 82.1292, 93.3391,
108.2953

■ 38.5843, 30.3962,
19.3387

■ 35.3343, 25.6079,
12.9782

■ 32.7883, 21.7986,
8.1751

■ 30.8932, 18.9001,
4.7946

■ 29.5884, 16.8356,
2.6792

■ 28.7966, 15.5135,
1.6088

Harmonies

Analogous

The Analogous color harmony consists of three colors that are next to each other on the color wheel.



59.8409, 60.4957, 65.8179



59.5143, 60.4957, 62.5729



58.6465, 60.4957, 60.2793

Triad

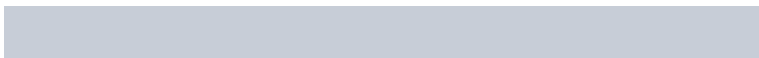
The Triadic color harmony groups three colors that are evenly spaced from another and form a triangle on the color wheel.



59.5143, 60.4957, 62.5729



55.5128, 60.4957, 62.6595



57.5174, 60.4957, 72.7105

Complementary

The Complementary color scheme is a pair of colors which are on the opposite of each other on the color wheel.



59.5143, 60.4957, 62.5729



59.9942, 65.1919, 74.3876

Split Complementary

Split-complementary colors differ from the complementary color scheme. The scheme consists of three colors, the original color and two neighbors of the complement color.



56.3673, 60.4957, 71.7951



59.5143, 60.4957, 62.5729



55.2197, 60.4957, 65.9212

Square

The Square scheme is like the rectangle color scheme, but the four colors are evenly spaced on the color wheel.



59.5143, 60.4957, 62.5729



56.3364, 60.4957, 60.3281



55.5304, 60.4957, 69.2800



58.6782, 60.4957, 71.7403

Rectangle

The Rectangle color scheme consists of four colors that form a rectangle on the color wheel.



59.5143, 60.4957, 62.5729



57.8836, 60.4957, 59.5573



55.5304, 60.4957, 69.2800



57.1168, 60.4957, 72.6127

Sweetspot

The Sweet Spot groups the original color and five complimentary colors.



59.5160, 60.4984, 62.5742



92.8212, 96.8389, 104.1599



60.8828, 60.3025, 72.0608



19.8909, 20.7607, 22.3441



0.0000, 0.0000, 0.0000



20.3446, 21.4041, 23.3091

Same Dimension

The Same Dimension uses a secret algorithm to generate beautiful new colors.



59.5160, 60.4984, 62.5742



85.4509, 86.3656, 88.5477



61.5477, 64.5617, 63.2514



12.5400, 12.6542, 12.9423



17.0145, 9.1463, 0.8686



1.0665, 0.6321, 0.0658

Inverse Universe

The Inverse Universe completely reimagines the original color for something new.



59.9942, 65.1919, 74.3876



86.2480, 94.1903, 108.2425



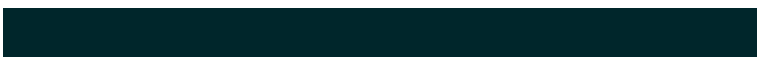
57.9038, 61.0111, 73.6908



12.6614, 13.8463, 15.9428



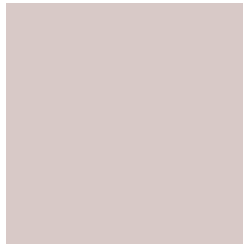
18.3566, 24.9751, 42.3063



1.1433, 1.5786, 2.5638

Previews

White Background



This preview shows how the XYZ color 59.5143, 60.4957, 62.5729 looks on a white background.

Color Contrast Check

Large Text (above 18pt) WCAG AA × Fail

Any Text WCAG AA × Fail

Large Text (above 18pt) WCAG AAA × Fail

Any Text WCAG AAA × Fail

Black Background



This preview shows how the XYZ color 59.5143, 60.4957, 62.5729 looks on a black background.

Color Contrast Check

Large Text (above 18pt) WCAG AA ✓ Pass

Any Text WCAG AA ✓ Pass

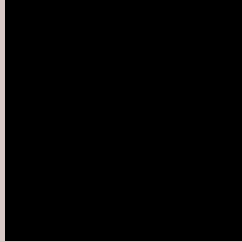
Large Text (above 18pt) WCAG AAA ✓ Pass

Any Text WCAG AAA ✓ Pass

If you want to check with other color combinations, try the [Color Contrast Checker](#).

XYZ 59.5143, 60.4957, 62.5729

Background



This preview shows how black text looks on a background with the XYZ color 59.5143, 60.4957, 62.5729.



This preview shows how white text looks on a background with the XYZ color 59.5143, 60.4957,

Color Blindness Simulation

Color vision deficiency is a very complex topic, and I could not describe the different causes any better than Wikipedia does, so if you want to learn more, you should check out their [article about color blindness](#).

Dichromacy



Original Color

59.5143, 60.4957, 62.5729

Protanopia

58.0758, 60.4373, 63.2482

Deuteranopia

61.9834, 60.7270, 63.0982



Tritanopia

61.4745, 60.6073, 72.0767

Trichromacy



Original Color

59.5143, 60.4957, 62.5729

Protanomaly

58.6972, 60.4082, 63.2099

Deuteranomaly

60.9730, 60.5466, 63.1166

Tritanomaly

60.7782, 60.6637, 68.8275

Monochromacy



Original Color

59.5143, 60.4957, 62.5729

Achromatopsia

58.0276, 61.0496, 66.4830

Achromatomaly

58.6669, 61.0528, 65.1922

CSS Examples

Text

The CSS property to change the color of the text to XYZ 59.5143, 60.4957, 62.5729 is called "color". The color property can be set on classes, ids or directly on the HTML element.

This example shows how text in the color rgb(216, 201, 199) looks like.

```
.text, #text, p{  
    color:rgb(216, 201, 199)  
}
```

If you want to add a text shadow in that color use the text-shadow property, you can generate a text shadow directly with our [CSS Text Shadow Generator](#).

Here you see how black text with a 4 pixel rgb(216, 201, 199) colored shadow looks like.

```
.shadow{ text-shadow: 4px 4px 2px rgb(216, 201, 199) }
```

Border

The CSS property to change the border of an element to XYZ 59.5143, 60.4957, 62.5729 is called "border". The border property can be set on classes, ids or directly on the HTML element.

This example shows the color as border, it can be applied via the CSS property "border" or "border-color".

```
.border, #border, table{ border:4px solid rgb(216, 201, 199) }
```


If only the border color should be changed use the property `border-color`.

```
.border{ border-color:rgb(216, 201, 199) }
```

If you want to add a box shadow in that color use:

Here you see how a box with a 4 pixel `rgb(216, 201, 199)` colored shadow looks like.

```
.boxshadow{ -moz-box-shadow:4px 4px 4px  
4px rgb(216, 201, 199); -webkit-box-  
shadow:4px 4px 4px 4px rgb(216, 201, 199);  
box-shadow:4px 4px 4px 4px rgb(216, 201,  
199) }
```

Background

The CSS property to change the background color of an element to XYZ 59.5143, 60.4957, 62.5729 is called "background". The background property can be set on classes, ids or directly on the HTML element.

```
.background, #background, body{  
background: rgb(216, 201, 199) }
```

If only the background color should be changed can be used:

```
.background{ background-color: rgb(216,  
201, 199) }
```

This example shows the color as background, it is applied via the CSS property "background".

To optimize and compress your CSS code, you can use our [online CSS compressor and optimizer](#) based on csstidy. If you want to create a linear or radial gradient as background or border, check our [CSS Gradient Generator](#).

Hey! You found this booklet interesting? Support Converting Colors with the new Membership Option!

The pro membership hides all ads, plus gives you double the colors in the color bucket, and more awesome pro features!

[Learn more, Memberships starting at \\$2.50/m!](#)

**Follow me
on Twitter!**

@ConvertingColor