

Converting Colors

XYZ(59.5226, 59.8049, 54.2012)

Have a look what the booklet for
XYZ(59.5226, 59.8049, 54.2012)
contains.

XYZ(59.3825, 59.5789, 54.2690)	3
<i>Conversions</i>	4
<i>Details</i>	6
<i>Harmonies</i>	12
<i>Previews</i>	24
<i>Color Blindness Simulation</i>	28
<i>CSS Examples</i>	31

Color

**XYZ(59.3825, 59.5789,
54.2690)**

Conversions

Conversions Part 1

Format	Color
Hex	DFC6B9
RGB	223, 198, 185
RGB Percent	87%, 78%, 73%
CMY	0.1255, 0.2235, 0.2745
CMYK	0.00, 0.11, 0.17, 0.13
HSL	21°, 37%, 80%
HSV	21°, 17%, 87%
XYZ	59.3825, 59.5789, 54.2690
YIQ	203.9930, 19.0730, 1.2570

Conversions

Conversions Part 2

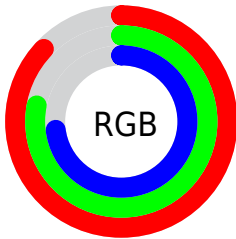
Format	Color
R_{YB}	223, 205, 185
Decimal	14665401
CIE _{Lab}	81.61, 6.71, 9.72
CIE _{LCh}	82, 11.812, 55.362
Yxy	59.5789, 0.3428, 0.3439
Android (android.graphics.Color)	4292855481 (0xFFDFC6B9)
YUV	203.9930, -9.3635, 16.6691
Hunter-Lab	77.1874, 2.2474, 12.3455

Details

The XYZ color **59.3825, 59.5789, 54.2690** is a light color, and the websafe version is hex **CCCCCC**. A complement of this color would be **56.3732, 61.7339, 78.7573**, and the grayscale version is **57.4403, 60.4317, 65.8101**.

A 20% lighter version of the original color is **92.8772, 99.1309, 97.4581**, and **30.2866, 29.9373, 26.0120** is the 20% darker color. If you saturate the color by 10%, you get **54.0188, 52.3278, 41.7634**, and if you desaturate by 10%, it is **65.4434, 67.6326, 68.8301**.

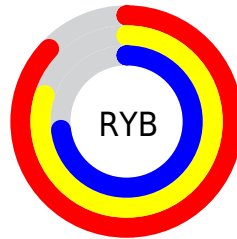
Distribution



Red (87%)

Green (78%)

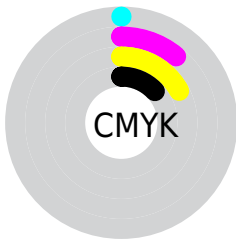
Blue (73%)



Red (87%)

Yellow (80%)

Blue (73%)

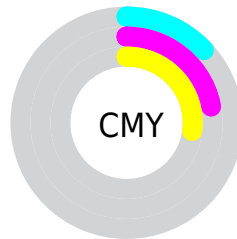


Cyan (0%)

Magenta (11%)

Yellow (17%)

Black (13%)



Cyan (13%)


Magenta (22%)

Yellow (27%)

Brightness & Saturation Gradients


These gradients show how the XYZ color 59.3825, 59.5789, 54.2690 changes by changing the brightness by 10 percent. The first figure shows a shift by +10% for each color and the second figure -10%.

Similar to the brightness gradients but the following saturation gradients show a change of the XYZ color 59.3825, 59.5789, 54.2690 by changing the saturation by 10% instead.


 59.3825, 59.5789,
54.2690

 59.3825, 59.5789,
54.2690


412.1892,
423.0439, 420.3385

 43.1687, 43.0793,
38.4221


 103.0448,
104.2186, 97.9295

 30.2126, 29.9473,
26.0061

131.2240,
133.1274, 126.5802

 20.1489, 19.7986,
16.6024


164.1224,
166.9415, 160.3359

 12.6122, 12.2487,
9.7925

202.1053,
206.0452, 199.6151

 7.2372, 6.9133,
5.1578

245.5381,
250.8229, 244.8365

 3.6585, 3.4080,
2.2798

294.7861,

 1.5108, 1.3482,

301.6589, 296.4185

0.7199

350.2147,
358.9378, 354.7797

■ 0.3332, 0.1781,
0.0000

■ 0.0000, 0.0000,
0.0000

■ 59.3825, 59.5789,
54.2690

■ 59.3825, 59.5789,
54.2690

■ 54.0188, 52.3278,
41.7634

■ 65.4434, 67.6326,
68.8301

■ 49.3212, 45.8459,
31.2160

■ 72.2217, 76.5048,
85.5304

■ 45.2632, 40.1095,
22.5274

■ 79.7424, 86.2213,
104.4533

■ 41.8144, 35.0901,
15.5876

■ 84.2417, 94.4281,
108.3942

■ 38.9418, 30.7576,
10.2751

■ 36.6089, 27.0793,
6.4526

■ 34.7737, 24.0193,
3.9594

■ 33.3848, 21.5364,
2.5869

■ 33.0378, 20.9003,
2.2929

Harmonies

Analogous

The Analogous color harmony consists of three colors that are next to each other on the color wheel.



61.0482, 59.5789, 59.1944



59.3825, 59.5789, 54.2690



57.0145, 59.5789, 52.1864

Triad

The Triadic color harmony groups three colors that are evenly spaced from another and form a triangle on the color wheel.



59.3825, 59.5789, 54.2690



52.0057, 59.5789, 63.7729



58.6956, 59.5789, 78.0142

Complementary

The Complementary color scheme is a pair of colors which are on the opposite of each other on the color wheel.



59.3825, 59.5789, 54.2690



56.3732, 61.7339, 78.7573

Split Complementary

Split-complementary colors differ from the complementary color scheme. The scheme consists of three colors, the original color and two neighbors of the complement color.



56.2431, 59.5789, 79.4613



59.3825, 59.5789, 54.2690



52.4264, 59.5789, 70.9000

Square

The Square scheme is like the rectangle color scheme, but the four colors are evenly spaced on the color wheel.



59.3825, 59.5789, 54.2690



52.7936, 59.5789, 57.4127



53.9599, 59.5789, 76.7717



60.6436, 59.5789, 72.9494

Rectangle

The Rectangle color scheme consists of four colors that form a rectangle on the color wheel.



59.3825, 59.5789, 54.2690



55.3738, 59.5789, 52.5708



53.9599, 59.5789, 76.7717



57.9009, 59.5789, 78.9549

Sweetspot

The Sweet Spot groups the original color and five complimentary colors.



59.3841, 59.5816, 54.2703



90.4472, 93.9710, 97.5725



59.4556, 55.0565, 68.6848



19.2253, 19.9372, 20.5566



0.0000, 0.0000, 0.0000



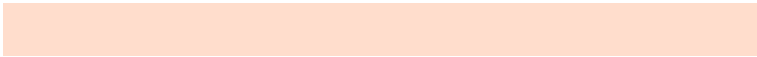
20.3446, 21.4041, 23.3091

Same Dimension

The Same Dimension uses a secret algorithm to generate beautiful new colors.



59.3841, 59.5816, 54.2703



78.1153, 77.5720, 67.9825



63.9161, 68.6455, 55.7809



14.0888, 14.4635, 14.3560



19.5202, 12.4783, 1.3797



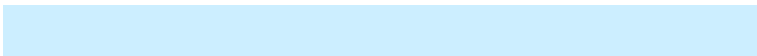
1.4343, 1.0274, 0.1227

Inverse Universe

The Inverse Universe completely reimagines the original color for something new.



56.3732, 61.7339, 78.7573



73.3947, 80.9431, 106.3630



52.0312, 53.0500, 77.3100



13.7010, 14.7412, 17.5109



14.0467, 15.5630, 43.3120



1.0558, 1.2432, 3.0295

Previews

White Background



This preview shows how the XYZ color 59.3825, 59.5789, 54.2690 looks on a white background.

Color Contrast Check

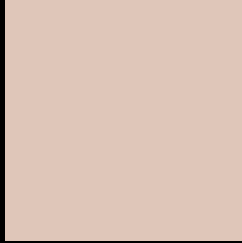
Large Text (above 18pt) WCAG AA × Fail

Any Text WCAG AA × Fail

Large Text (above 18pt) WCAG AAA × Fail

Any Text WCAG AAA × Fail

Black Background



This preview shows how the XYZ color 59.3825, 59.5789, 54.2690 looks on a black background.

Color Contrast Check

Large Text (above 18pt) WCAG AA ✓ Pass

Any Text WCAG AA ✓ Pass

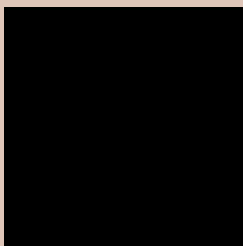
Large Text (above 18pt) WCAG AAA ✓ Pass

Any Text WCAG AAA ✓ Pass

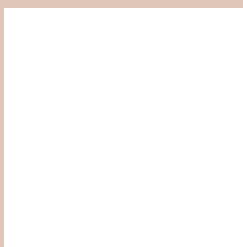
If you want to check with other color combinations, try the [Color Contrast Checker](#).

XYZ 59.3825, 59.5789, 54.2690

Background



This preview shows how black text looks on a background with the XYZ color 59.3825, 59.5789, 54.2690.



This preview shows how white text looks on a background with the XYZ color 59.3825, 59.5789,

Color Blindness Simulation

Color vision deficiency is a very complex topic, and I could not describe the different causes any better than Wikipedia does, so if you want to learn more, you should check out their [article about color blindness](#).

Dichromacy



Original Color

59.3825, 59.5789, 54.2690

Protanopia

56.6685, 59.5306, 55.5175

Deuteranopia

60.8100, 59.6407, 54.2057



Tritanopia

62.2887, 59.4055, 69.1562

Trichromacy



Original Color

59.3825, 59.5789, 54.2690

Protanomaly

57.7739, 59.7655, 54.9453

Deuteranomaly

60.4018, 59.7662, 54.2515

Tritanomaly

61.1091, 59.2548, 63.4749

Monochromacy



Original Color

59.3825, 59.5789, 54.2690

Achromatopsia

57.3938, 60.3827, 65.7568

Achromatomaly

58.0625, 60.1212, 61.3676

CSS Examples

Text

The CSS property to change the color of the text to XYZ 59.3825, 59.5789, 54.2690 is called "color". The color property can be set on classes, ids or directly on the HTML element.

This example shows how text in the color `rgb(223, 198, 185)` looks like.

```
.text, #text, p{  
    color:rgb(223, 198, 185)  
}
```

If you want to add a text shadow in that color use the text-shadow property, you can generate a text shadow directly with our [CSS Text Shadow Generator](#).

Here you see how black text with a 4 pixel rgb(223, 198, 185) colored shadow looks like.

```
.shadow{ text-shadow: 4px 4px 2px rgb(223, 198, 185) }
```

Border

The CSS property to change the border of an element to XYZ 59.3825, 59.5789, 54.2690 is called "border". The border property can be set on classes, ids or directly on the HTML element.

This example shows the color as border, it can be applied via the CSS property "border" or "border-color".

```
.border, #border, table{ border:4px solid rgb(223, 198, 185) }
```


If only the border color should be changed use the property `border-color`.

```
.border{ border-color:rgb(223, 198, 185) }
```

If you want to add a box shadow in that color use:

Here you see how a box with a 4 pixel `rgb(223, 198, 185)` colored shadow looks like.

```
.boxshadow{ -moz-box-shadow:4px 4px 4px  
4px rgb(223, 198, 185); -webkit-box-  
shadow:4px 4px 4px 4px rgb(223, 198, 185);  
box-shadow:4px 4px 4px 4px rgb(223, 198,  
185) }
```

Background

The CSS property to change the background color of an element to XYZ 59.3825, 59.5789, 54.2690 is called "background". The background property can be set on classes, ids or directly on the HTML element.

```
.background, #background, body{  
background: rgb(223, 198, 185) }
```

If only the background color should be changed can be used:

```
.background{ background-color: rgb(223,  
198, 185) }
```

This example shows the color as background, it is applied via the CSS property "background".

To optimize and compress your CSS code, you can use our [online CSS compressor and optimizer](#) based on csstidy. If you want to create a linear or radial gradient as background or border, check our [CSS Gradient Generator](#).

Hey! You found this booklet interesting? Support Converting Colors with the new Membership Option!

The pro membership hides all ads, plus gives you double the colors in the color bucket, and more awesome pro features!

[Learn more, Memberships starting at \\$2.50/m!](#)

**Follow me
on Twitter!**

@ConvertingColor