

Converting Colors

XYZ(59.5737, 58.8470, 59.2607)

Have a look what the booklet for
XYZ(59.5737, 58.8470, 59.2607)
contains.

XYZ(59.6017, 58.9045, 59.2673)	3
<i>Conversions</i>	4
<i>Details</i>	6
<i>Harmonies</i>	12
<i>Previews</i>	24
<i>Color Blindness Simulation</i>	28
<i>CSS Examples</i>	31

Color

**XYZ(59.6017, 58.9045,
59.2673)**

Conversions

Conversions Part 1

Format	Color
Hex	DEC4C2
RGB	222, 196, 194
RGB Percent	87%, 77%, 76%
CMY	0.1294, 0.2314, 0.2392
CMYK	0.00, 0.12, 0.13, 0.13
HSL	4°, 30%, 82%
HSV	4°, 13%, 87%
XYZ	59.6017, 58.9045, 59.2673
YIQ	203.5460, 16.1380, 4.8900

Conversions

Conversions Part 2

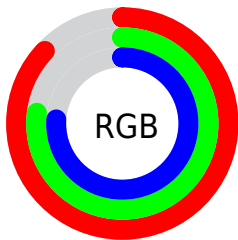
Format	Color
R _Y B	222, 196, 194
Decimal	14599362
CIE Lab	81.24, 8.83, 4.36
CIE LCh	81, 9.848, 26.247
Yxy	58.9045, 0.3353, 0.3313
Android (android.graphics.Color)	4292789442 (0xFFDEC4C2)
YUV	203.5460, -4.7062, 16.1842
Hunter-Lab	76.7493, 4.3077, 7.9396

Details

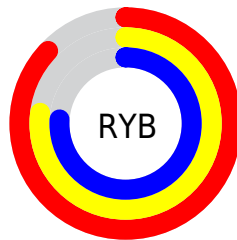
The XYZ color **59.6017, 58.9045, 59.2673** is a light color, and the websafe version is hex **CCCCCC**. A complement of this color would be **61.0257, 67.9281, 79.0028**, and the grayscale version is **57.1310, 60.1063, 65.4558**.

A 20% lighter version of the original color is **93.6206, 98.4127, 104.5037**, and **30.3430, 29.4549, 28.8971** is the 20% darker color. If you saturate the color by 10%, you get **52.9586, 49.3143, 45.6572**, and if you desaturate by 10%, it is **67.2593, 69.9263, 75.0546**.

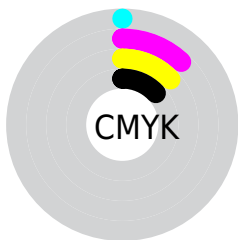
Distribution



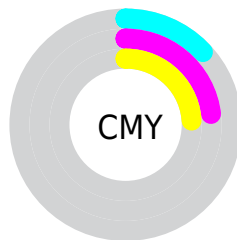
- Red (87%)
- Green (77%)
- Blue (76%)



- Red (87%)
- Yellow (77%)
- Blue (76%)



- Cyan (0%)
- Magenta (12%)
- Yellow (13%)
- Black (13%)



- Cyan (13%)
- Magenta (23%)
- Yellow (24%)

Brightness & Saturation Gradients

These gradients show how the XYZ color 59.6017, 58.9045, 59.2673 changes by changing the brightness by 10 percent. The first figure shows a shift by +10% for each color and the second figure -10%.

Similar to the brightness gradients but the following saturation gradients show a change of the XYZ color 59.6017, 58.9045, 59.2673 by changing the saturation by 10% instead.

■ 59.6017, 58.9045,
59.2673

■ 59.6017, 58.9045,
59.2673

412.9864,
420.5479, 439.6212

■ 43.3459, 42.5362,
42.4069

■ 103.3613,
103.2389, 105.2990

■ 30.3523, 29.5214,
29.0921

131.5958,
131.9737, 135.3074

■ 20.2556, 19.4756,
18.9043

164.5540,
165.5996, 170.5355

■ 12.6903, 12.0144,
11.4251

202.6011,
204.5009, 211.4019

■ 7.2911, 6.7535,
6.2357

246.1025,
249.0620, 258.3251

■ 3.6928, 3.3084,
2.9179

295.4237,

■ 1.5298, 1.2948,

299.6673, 311.7237

1.0528

350.9298,
356.7011, 372.0163

■ 0.3460, 0.1372,
0.0000

■ 0.0000, 0.0000,
0.0000

■ 59.6017, 58.9045,
59.2673

■ 59.6017, 58.9045,
59.2673

■ 52.9586, 49.3143,
45.6572

■ 67.2593, 69.9263,
75.0546

■ 47.2827, 41.0895,
34.1251

■ 75.9663, 82.4267,
93.1047

■ 42.5303, 34.1703,
24.5700

■ 83.9344, 94.2697,
108.3798

■ 38.6525, 28.4896,
16.8807

■ 35.5957, 23.9741,
10.9352

■ 33.3007, 20.5431,
6.5969

■ 31.6999, 18.1053,
3.7089

■ 30.7140, 16.5544,
2.0826

■ 30.3081, 15.8970,
1.4710

Harmonies

Analogous

The Analogous color harmony consists of three colors that are next to each other on the color wheel.



60.0181, 58.9045, 64.8797



59.6017, 58.9045, 59.2673



58.2085, 58.9045, 55.1911

Triad

The Triadic color harmony groups three colors that are evenly spaced from another and form a triangle on the color wheel.



59.6017, 58.9045, 59.2673



52.7694, 58.9045, 58.0598



55.7290, 58.9045, 76.0893

Complementary

The Complementary color scheme is a pair of colors which are on the opposite of each other on the color wheel.



59.6017, 58.9045, 59.2673



61.0257, 67.9281, 79.0028

Split Complementary

Split-complementary colors differ from the complementary color scheme. The scheme consists of three colors, the original color and two neighbors of the complement color.



53.8227, 58.9045, 74.0008



59.6017, 58.9045, 59.2673



52.1405, 58.9045, 63.4000

Square

The Square scheme is like the rectangle color scheme, but the four colors are evenly spaced on the color wheel.



59.6017, 58.9045, 59.2673



54.2597, 58.9045, 54.5245



52.5214, 58.9045, 69.2664



57.7505, 58.9045, 74.8177

Rectangle

The Rectangle color scheme consists of four colors that form a rectangle on the color wheel.



59.6017, 58.9045, 59.2673



56.9305, 58.9045, 53.7730



52.5214, 58.9045, 69.2664



55.0539, 58.9045, 75.7538

Sweetspot

The Sweet Spot groups the original color and five complimentary colors.



59.6033, 58.9071, 59.2685



90.5039, 93.4664, 99.4969



62.3526, 59.2883, 75.9607



19.1941, 19.7505, 20.9300



0.0000, 0.0000, 0.0000



20.3446, 21.4041, 23.3091

Same Dimension

The Same Dimension uses a secret algorithm to generate beautiful new colors.



59.6033, 58.9071, 59.2685



79.1908, 77.1746, 76.1977



62.8761, 65.4527, 60.3595



13.7856, 13.8572, 14.2549



18.0320, 9.5018, 0.8836



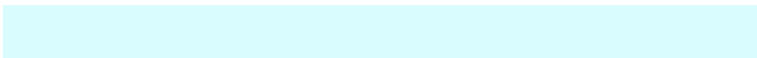
1.2779, 0.7147, 0.0706

Inverse Universe

The Inverse Universe completely reimagines the original color for something new.



61.0257, 67.9281, 79.0028



81.4838, 91.7191, 108.0166



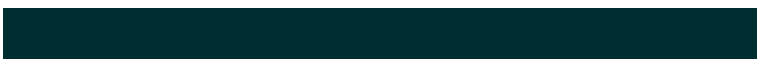
57.5371, 60.9509, 77.8399



14.0282, 15.3956, 17.6200



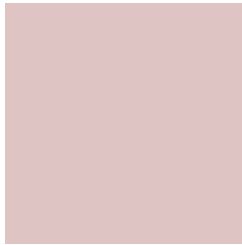
20.9921, 29.4538, 45.6271



1.4805, 2.0926, 3.1711

Previews

White Background



This preview shows how the XYZ color 59.6017, 58.9045, 59.2673 looks on a white background.

Color Contrast Check

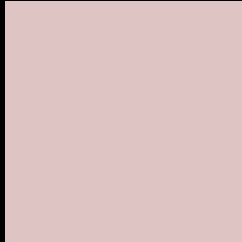
Large Text (above 18pt) WCAG AA × Fail

Any Text WCAG AA × Fail

Large Text (above 18pt) WCAG AAA × Fail

Any Text WCAG AAA × Fail

Black Background



This preview shows how the XYZ color 59.6017, 58.9045, 59.2673 looks on a black background.

Color Contrast Check

Large Text (above 18pt) WCAG AA ✓ Pass

Any Text WCAG AA ✓ Pass

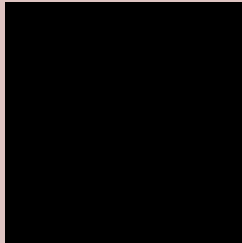
Large Text (above 18pt) WCAG AAA ✓ Pass

Any Text WCAG AAA ✓ Pass

If you want to check with other color combinations, try the [Color Contrast Checker](#).

XYZ 59.6017, 58.9045, 59.2673

Background



This preview shows how black text looks on a background with the XYZ color 59.6017, 58.9045, 59.2673.



This preview shows how white text looks on a background with the XYZ color 59.6017, 58.9045,

Color Blindness Simulation

Color vision deficiency is a very complex topic, and I could not describe the different causes any better than Wikipedia does, so if you want to learn more, you should check out their [article about color blindness](#).

Dichromacy



Original Color

59.6017, 58.9045, 59.2673

Protanopia

56.6968, 59.0699, 61.2367

Deuteranopia

59.9932, 58.7725, 59.2212



Tritanopia

61.5409, 59.0343, 68.4728

Trichromacy



Original Color

59.6017, 58.9045, 59.2673

Protanomaly

57.5386, 58.8294, 60.5472

Deuteranomaly

59.6841, 58.6132, 59.2067

Tritanomaly

60.8456, 59.0778, 65.3230

Monochromacy



Original Color

59.6017, 58.9045, 59.2673

Achromatopsia

57.3938, 60.3827, 65.7568

Achromatomaly

58.1759, 59.7923, 63.1184

CSS Examples

Text

The CSS property to change the color of the text to XYZ 59.6017, 58.9045, 59.2673 is called "color". The color property can be set on classes, ids or directly on the HTML element.

This example shows how text in the color `rgb(222, 196, 194)` looks like.

```
.text, #text, p{  
    color:rgb(222, 196, 194)  
}
```

If you want to add a text shadow in that color use the text-shadow property, you can generate a text shadow directly with our [CSS Text Shadow Generator](#).

Here you see how black text with a 4 pixel rgb(222, 196, 194) colored shadow looks like.

```
.shadow{ text-shadow: 4px 4px 2px rgb(222, 196, 194) }
```

Border

The CSS property to change the border of an element to XYZ 59.6017, 58.9045, 59.2673 is called "border". The border property can be set on classes, ids or directly on the HTML element.

This example shows the color as border, it can be applied via the CSS property "border" or "border-color".

```
.border, #border, table{ border:4px solid rgb(222, 196, 194) }
```


If only the border color should be changed use the property `border-color`.

```
.border{ border-color:rgb(222, 196, 194) }
```

If you want to add a box shadow in that color use:

Here you see how a box with a 4 pixel `rgb(222, 196, 194)` colored shadow looks like.

```
.boxshadow{ -moz-box-shadow:4px 4px 4px  
4px rgb(222, 196, 194); -webkit-box-  
shadow:4px 4px 4px 4px rgb(222, 196, 194);  
box-shadow:4px 4px 4px 4px rgb(222, 196,  
194) }
```

Background

The CSS property to change the background color of an element to XYZ 59.6017, 58.9045, 59.2673 is called "background". The background property can be set on classes, ids or directly on the HTML element.

```
.background, #background, body{  
background: rgb(222, 196, 194) }
```

If only the background color should be changed can be used:

```
.background{ background-color: rgb(222,  
196, 194) }
```

This example shows the color as background, it is applied via the CSS property "background".

To optimize and compress your CSS code, you can use our [online CSS compressor and optimizer](#) based on csstidy. If you want to create a linear or radial gradient as background or border, check our [CSS Gradient Generator](#).

Hey! You found this booklet interesting? Support Converting Colors with the new Membership Option!

The pro membership hides all ads, plus gives you double the colors in the color bucket, and more awesome pro features!

[Learn more, Memberships starting at \\$2.50/m!](#)

**Follow me
on Twitter!**

@ConvertingColor