

# Converting Colors

XYZ(59.6113, 59.4347, 52.9168)

Have a look what the booklet for  
XYZ(59.6113, 59.4347, 52.9168)  
contains.

<b>XYZ(59.5648, 59.3590, 53.1178)</b> .....	3
<b><i>Conversions</i></b> .....	4
<b><i>Details</i></b> .....	6
<b><i>Harmonies</i></b> .....	12
<b><i>Previews</i></b> .....	24
<b><i>Color Blindness Simulation</i></b> .....	28
<b><i>CSS Examples</i></b> .....	31

# Color

**XYZ(59.5648, 59.3590,  
53.1178)**

# Conversions

## Conversions Part 1

Format	Color
Hex	E1C5B7
RGB	225, 197, 183
RGB Percent	88%, 77%, 72%
CMY	0.1176, 0.2274, 0.2823
CMYK	0.00, 0.12, 0.19, 0.12
HSL	20°, 41%, 80%
HSV	20°, 19%, 88%
XYZ	59.5648, 59.3590, 53.1178
YIQ	203.7760, 21.1820, 1.5820

# Conversions

## Conversions Part 2

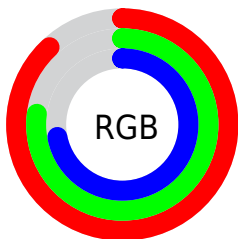
Format	Color
R <sub>Y</sub> B	225, 204, 183
Decimal	14796215
CIE Lab	81.49, 7.67, 10.64
CIE LCh	81, 13.116, 54.218
Yxy	59.3590, 0.3462, 0.3450
Android (android.graphics.Color)	4292986295 (0xFFE1C5B7)
YUV	203.7760, -10.2426, 18.6134
Hunter-Lab	77.0448, 3.1734, 13.0544

# Details

The XYZ color **59.5648, 59.3590, 53.1178** is a light color, and the websafe version is hex **FFCCCC**. A complement of this color would be **56.4128, 62.0904, 80.2458**, and the grayscale version is **57.3077, 60.2921, 65.6581**.

A 20% lighter version of the original color is **92.2618, 98.3756, 95.7870**, and **30.2139, 29.6916, 25.2577** is the 20% darker color. If you saturate the color by 10%, you get **54.1702, 52.0225, 40.6745**, and if you desaturate by 10%, it is **65.6759, 67.5283, 67.6483**.

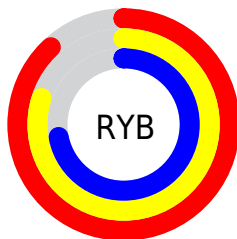
# Distribution



Red (88%)

Green (77%)

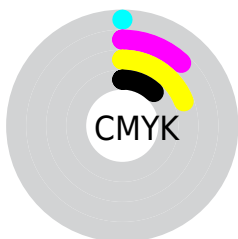
Blue (72%)



Red (88%)

Yellow (80%)

Blue (72%)

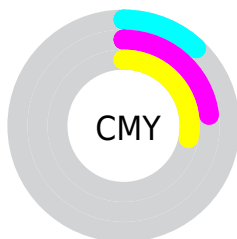


Cyan (0%)

Magenta (12%)

Yellow (19%)

Black (12%)



Cyan (12%)

Magenta (23%)


Yellow (28%)


# Brightness & Saturation Gradients

These gradients show how the XYZ color 59.5648, 59.3590, 53.1178 changes by changing the brightness by 10 percent. The first figure shows a shift by +10% for each color and the second figure -10%.


Similar to the brightness gradients but the following saturation gradients show a change of the XYZ color 59.5648, 59.3590, 53.1178 by changing the saturation by 10% instead.





 59.5648, 59.3590,  
53.1178

 59.5648, 59.3590,  
53.1178


412.8523,  
422.2310, 415.8160

 43.3161, 42.9022,  
37.5084


 103.3080,  
103.8993, 96.2210

 30.3288, 29.8084,  
25.3025


131.5333,  
132.7515, 124.5519

 20.2376, 19.6932,  
16.0815


164.4813,  
166.5043, 157.9604

 12.6771, 12.1722,  
9.4269

202.5176,  
205.5421, 196.8651

 7.2821, 6.8611,  
4.9201

246.0075,  
250.2493, 241.6845

 3.6870, 3.3754,  
2.1425

295.3164,

 1.5266, 1.3307,

301.0102, 292.8370

0.6409

350.8095,  
358.2093, 350.7414

■ 0.3438, 0.1648,  
0.0000

■ 0.0000, 0.0000,  
0.0000

■ 59.5648, 59.3590,  
53.1178

■ 59.5648, 59.3590,  
53.1178

■ 54.1702, 52.0225,  
40.6745

■ 65.6759, 67.5283,  
67.6483

■ 49.4597, 45.4839,  
30.2178

■ 72.5246, 76.5478,  
84.3527

■ 45.4052, 39.7177,  
21.6445

■ 80.1372, 86.4446,  
103.3172

■ 41.9751, 34.6936,  
14.8405

■ 84.8615, 94.7476,  
108.4232

■ 39.1346, 30.3796,  
9.6789

■ 36.8448, 26.7406,  
6.0160

■ 35.0615, 23.7382,  
3.6823

■ 33.7235, 21.3255,  
2.4250

■ 33.5692, 21.0431,  
2.2924

# Harmonies

## Analogous

The Analogous color harmony consists of three colors that are next to each other on the color wheel.



61.3757, 59.3590, 58.6217



59.5648, 59.3590, 53.1178



56.9529, 59.3590, 50.7166

# Triad

The Triadic color harmony groups three colors that are evenly spaced from another and form a triangle on the color wheel.



59.5648, 59.3590, 53.1178



51.3242, 59.3590, 63.1194



58.6140, 59.3590, 79.4363

# Complementary

The Complementary color scheme is a pair of colors which are on the opposite of each other on the color wheel.



59.5648, 59.3590, 53.1178



56.4128, 62.0904, 80.2458

# Split Complementary

Split-complementary colors differ from the complementary color scheme. The scheme consists of three colors, the original color and two neighbors of the complement color.



55.8883, 59.3590, 80.8846



59.5648, 59.3590, 53.1178



51.7366, 59.3590, 71.0394

# Square

The Square scheme is like the rectangle color scheme, but the four colors are evenly spaced on the color wheel.



59.5648, 59.3590, 53.1178



52.2406, 59.3590, 56.1824



53.3859, 59.3590, 77.7000



60.8144, 59.3590, 73.8887



# Rectangle

The Rectangle color scheme consists of four colors that form a rectangle on the color wheel.



59.5648, 59.3590, 53.1178



55.1313, 59.3590, 51.0461



53.3859, 59.3590, 77.7000



57.7265, 59.3590, 80.4366

# Sweetspot

The Sweet Spot groups the original color and five complimentary colors.



59.5664, 59.3617, 53.1190



89.5161, 92.7183, 95.3830



59.7432, 54.5784, 69.0144



19.0359, 19.6813, 20.1148



0.0000, 0.0000, 0.0000



20.3446, 21.4041, 23.3091

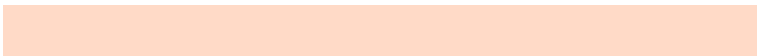


# Same Dimension

The Same Dimension uses a secret algorithm to generate beautiful new colors.



59.5664, 59.3617, 53.1190



76.5066, 75.3176, 64.4774



64.6704, 69.5697, 54.8204



14.0788, 14.4435, 14.3526



19.4402, 12.3183, 1.3531



1.4279, 1.0146, 0.1206



# Inverse Universe

The Inverse Universe completely reimagines the original color for something new.



56.4128, 62.0904, 80.2458



71.6568, 79.5087, 106.1777



51.5332, 52.3312, 78.6193



13.7114, 14.7620, 17.5144



14.2256, 15.9207, 43.3716



1.0673, 1.2661, 3.0334



# Previews

## White Background



This preview shows how the XYZ color 59.5648, 59.3590, 53.1178 looks on a white background.

## Color Contrast Check

Large Text (above 18pt) WCAG AA × Fail

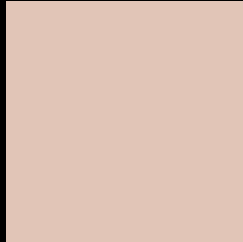
Any Text WCAG AA × Fail

Large Text (above 18pt) WCAG AAA × Fail

Any Text WCAG AAA × Fail



# Black Background



This preview shows how the XYZ color 59.5648, 59.3590, 53.1178 looks on a black background.

## Color Contrast Check

Large Text (above 18pt) WCAG AA ✓ Pass

Any Text WCAG AA ✓ Pass

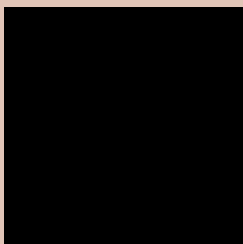
Large Text (above 18pt) WCAG AAA ✓ Pass

Any Text WCAG AAA ✓ Pass

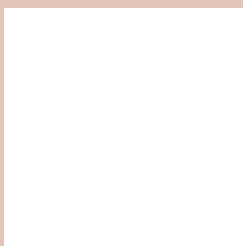
If you want to check with other color combinations, try the [Color Contrast Checker](#).

**XYZ 59.5648, 59.3590, 53.1178**

## **Background**



This preview shows how black text looks on a background with the XYZ color 59.5648, 59.3590, 53.1178.



This preview shows how white text looks on a background with the XYZ color 59.5648, 59.3590,



# Color Blindness Simulation

Color vision deficiency is a very complex topic, and I could not describe the different causes any better than Wikipedia does, so if you want to learn more, you should check out their [article about color blindness](#).

## Dichromacy



### Original Color

59.5648, 59.3590, 53.1178

### Protanopia

56.5618, 59.4879, 54.9556

### Deuteranopia

60.3754, 59.1071, 53.0264



## Tritanopia

62.4500, 59.1880, 67.8075

# Trichromacy



## Original Color

59.5648, 59.3590, 53.1178

## Protanomaly

57.4356, 59.2584, 54.3098

## Deuteranomaly

60.2821, 59.3927, 53.0865

## Tritanomaly

61.2791, 59.0380, 62.1985

# Monochromacy



## Original Color

59.5648, 59.3590, 53.1178

## Achromatopsia

57.3938, 60.3827, 65.7568

## Achromatomaly

58.0018, 59.7559, 60.7016

# CSS Examples

## Text

The CSS property to change the color of the text to XYZ 59.5648, 59.3590, 53.1178 is called "color". The color property can be set on classes, ids or directly on the HTML element.

This example shows how text in the color `rgb(225, 197, 183)` looks like.

```
.text, #text, p{  
    color:rgb(225, 197, 183)  
}
```

If you want to add a text shadow in that color use the text-shadow property, you can generate a text shadow directly with our [CSS Text Shadow Generator](#).

Here you see how black text with a 4 pixel rgb(225, 197, 183) colored shadow looks like.

```
.shadow{ text-shadow: 4px 4px 2px rgb(225, 197, 183) }
```

## Border

The CSS property to change the border of an element to XYZ 59.5648, 59.3590, 53.1178 is called "border". The border property can be set on classes, ids or directly on the HTML element.

This example shows the color as border, it can be applied via the CSS property "border" or "border-color".

```
.border, #border, table{ border:4px solid rgb(225, 197, 183) }
```



If only the border color should be changed use the property `border-color`.

```
.border{ border-color:rgb(225, 197, 183) }
```

If you want to add a box shadow in that color use:

Here you see how a box with a 4 pixel `rgb(225, 197, 183)` colored shadow looks like.

```
.boxshadow{ -moz-box-shadow:4px 4px 4px 4px rgb(225, 197, 183); -webkit-box-shadow:4px 4px 4px 4px rgb(225, 197, 183); box-shadow:4px 4px 4px 4px rgb(225, 197, 183) }
```

# Background

The CSS property to change the background color of an element to XYZ 59.5648, 59.3590, 53.1178 is called "background". The background property can be set on classes, ids or directly on the HTML element.

```
.background, #background, body{  
background: rgb(225, 197, 183) }
```

If only the background color should be changed can be used:

```
.background{ background-color: rgb(225,  
197, 183) }
```

This example shows the color as background, it is applied via the CSS property "background".

To optimize and compress your CSS code, you can use our [online CSS compressor and optimizer](#) based on csstidy. If you want to create a linear or radial gradient as background or border, check our [CSS Gradient Generator](#).

Hey! You found this booklet interesting? Support Converting Colors with the new Membership Option!

The pro membership hides all ads, plus gives you double the colors in the color bucket, and more awesome pro features!

**[Learn more, Memberships starting at \\$2.50/m!](#)**

**Follow me  
on Twitter!**

@ConvertingColor