

Converting Colors

XYZ(59.6170, 58.4694, 61.7163)

Have a look what the booklet for
XYZ(59.6170, 58.4694, 61.7163)
contains.

XYZ(59.5269, 58.4796, 61.5764)	3
<i>Conversions</i>	4
<i>Details</i>	6
<i>Harmonies</i>	12
<i>Previews</i>	24
<i>Color Blindness Simulation</i>	28
<i>CSS Examples</i>	31

Color

**XYZ(59.5269, 58.4796,
61.5764)**

Conversions

Conversions Part 1

Format	Color
Hex	DDC3C6
RGB	221, 195, 198
RGB Percent	87%, 76%, 78%
CMY	0.1333, 0.2353, 0.2235
CMYK	0.00, 0.12, 0.10, 0.13
HSL	353°, 28%, 82%
HSV	353°, 12%, 87%
XYZ	59.5269, 58.4796, 61.5764
YIQ	203.1160, 14.5330, 6.4450

Conversions

Conversions Part 2

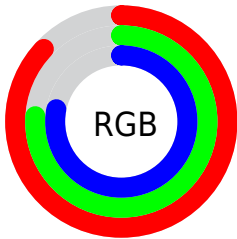
Format	Color
R _Y B	221, 195, 198
Decimal	14533574
CIE Lab	81.00, 9.66, 1.86
CIE LCh	81, 9.841, 10.879
Yxy	58.4796, 0.3315, 0.3256
Android (android.graphics.Color)	4292723654 (0xFFDDC3C6)
YUV	203.1160, -2.5222, 15.6843
Hunter-Lab	76.4720, 5.1211, 5.7891

Details

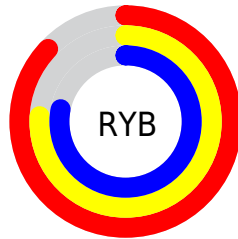
The XYZ color **59.5269, 58.4796, 61.5764** is a light color, and the websafe version is hex **CCCCCC**. A complement of this color would be **61.0192, 68.3783, 76.3152**, and the grayscale version is **56.8479, 59.8084, 65.1314**.

A 20% lighter version of the original color is **94.1004, 98.1008, 108.5835**, and **30.2848, 29.1704, 30.4198** is the 20% darker color. If you saturate the color by 10%, you get **52.8254, 48.4555, 48.9246**, and if you desaturate by 10%, it is **67.2557, 70.0910, 76.0085**.

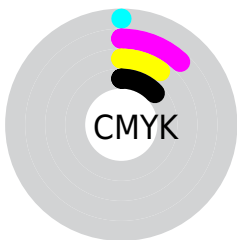
Distribution



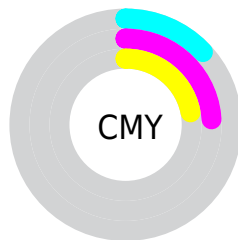
- Red (87%)
- Green (76%)
- Blue (78%)



- Red (87%)
- Yellow (76%)
- Blue (78%)



- Cyan (0%)
- Magenta (12%)
- Yellow (10%)
- Black (13%)



- Cyan (13%)
- Magenta (24%)
- Yellow (22%)

Brightness & Saturation Gradients

These gradients show how the XYZ color 59.5269, 58.4796, 61.5764 changes by changing the brightness by 10 percent. The first figure shows a shift by +10% for each color and the second figure -10%.

Similar to the brightness gradients but the following saturation gradients show a change of the XYZ color 59.5269, 58.4796, 61.5764 by changing the saturation by 10% instead.

■ 59.5269, 58.4796,
61.5764

■ 59.5269, 58.4796,
61.5764

412.7145,
418.9707, 448.3492

■ 43.2854, 42.1943,
44.2569

□ 103.2533,
102.6209, 108.6787

■ 30.3046, 29.2535,
30.5339

131.4690,
131.2458, 139.2987

■ 20.2191, 19.2727,
19.9887

164.4067,
164.7527, 175.1892

■ 12.6636, 11.8675,
12.2028

202.4319,
203.5259, 216.7688

■ 7.2727, 6.6535,
6.7577

245.9100,
247.9499, 264.4561

■ 3.6811, 3.2464,
3.2349

295.2062,

■ 1.5233, 1.2617,

298.4091, 318.6695

1.2158

350.6859,
355.2879, 379.8277

■ 0.3416, 0.1112,
0.0000

■ 0.0000, 0.0000,
0.0000

■ 59.5269, 58.4796,
61.5764

■ 59.5269, 58.4796,
61.5764

■ 52.8254, 48.4555,
48.9246

■ 67.2557, 70.0910,
76.0085

■ 47.1032, 39.9424,
37.9804

■ 76.0475, 83.3464,
92.2824

■ 42.3158, 32.8693,
28.6716

■ 83.6290, 94.1123,
108.3655

■ 38.4130, 27.1565,
20.9195

■ 35.3404, 22.7163,
14.6387

■ 33.0371, 19.4511,
9.7357

■ 31.4339, 17.2488,
6.1059

■ 30.4490, 15.9757,
3.6298

■ 29.9996, 15.4445,
2.3465

Harmonies

Analogous

The Analogous color harmony consists of three colors that are next to each other on the color wheel.



59.3742, 58.4796, 67.4274



59.5269, 58.4796, 61.5764



58.6035, 58.4796, 56.5979

Triad

The Triadic color harmony groups three colors that are evenly spaced from another and form a triangle on the color wheel.



59.5269, 58.4796, 61.5764



53.0540, 58.4796, 55.5486



54.3075, 58.4796, 74.8953

Complementary

The Complementary color scheme is a pair of colors which are on the opposite of each other on the color wheel.



59.5269, 58.4796, 61.5764



61.0192, 68.3783, 76.3152

Split Complementary

Split-complementary colors differ from the complementary color scheme. The scheme consists of three colors, the original color and two neighbors of the complement color.



52.6683, 58.4796, 71.3173



59.5269, 58.4796, 61.5764



51.9569, 58.4796, 60.0632

Square

The Square scheme is like the rectangle color scheme, but the four colors are evenly spaced on the color wheel.



59.5269, 58.4796, 61.5764



54.8457, 58.4796, 53.2622



51.8175, 58.4796, 65.8194



56.3271, 58.4796, 75.3621

Rectangle

The Rectangle color scheme consists of four colors that form a rectangle on the color wheel.



59.5269, 58.4796, 61.5764



57.5150, 58.4796, 54.3515



51.8175, 58.4796, 65.8194



53.6950, 58.4796, 74.0067

Sweetspot

The Sweet Spot groups the original color and five complimentary colors.



59.5285, 58.4822, 61.5776



90.4627, 93.0962, 100.3706



61.4714, 59.1536, 76.5850



19.1838, 19.6573, 21.1500



0.0000, 0.0000, 0.0000



20.3446, 21.4041, 23.3091

Same Dimension

The Same Dimension uses a secret algorithm to generate beautiful new colors.



59.5285, 58.4822, 61.5776



80.0251, 77.4298, 80.8331



61.4942, 62.9611, 60.5446



13.1168, 13.0758, 13.8761



17.4483, 8.9804, 1.4749



1.1512, 0.5901, 0.2051

Inverse Universe

The Inverse Universe completely reimagines the original color for something new.



59.5285, 58.4822, 61.5776



80.0251, 77.4298, 80.8331



58.8615, 63.4297, 77.5479



13.1168, 13.0758, 13.8761



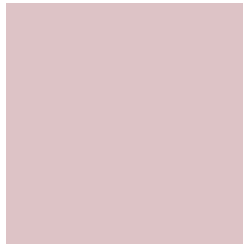
17.4483, 8.9804, 1.4749



1.1512, 0.5901, 0.2051

Previews

White Background



This preview shows how the XYZ color 59.5269, 58.4796, 61.5764 looks on a white background.

Color Contrast Check

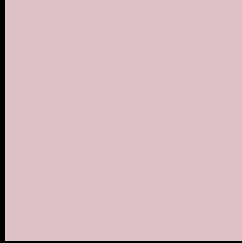
Large Text (above 18pt) WCAG AA × Fail

Any Text WCAG AA × Fail

Large Text (above 18pt) WCAG AAA × Fail

Any Text WCAG AAA × Fail

Black Background



This preview shows how the XYZ color 59.5269, 58.4796, 61.5764 looks on a black background.

Color Contrast Check

Large Text (above 18pt) WCAG AA ✓ Pass

Any Text WCAG AA ✓ Pass

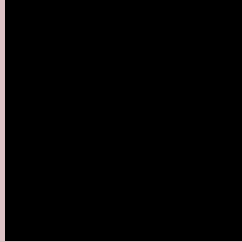
Large Text (above 18pt) WCAG AAA ✓ Pass

Any Text WCAG AAA ✓ Pass

If you want to check with other color combinations, try the [Color Contrast Checker](#).

XYZ 59.5269, 58.4796, 61.5764

Background



This preview shows how black text looks on a background with the XYZ color 59.5269, 58.4796, 61.5764.



This preview shows how white text looks on a background with the XYZ color 59.5269, 58.4796,

Color Blindness Simulation

Color vision deficiency is a very complex topic, and I could not describe the different causes any better than Wikipedia does, so if you want to learn more, you should check out their [article about color blindness](#).

Dichromacy



Original Color

59.5269, 58.4796, 61.5764

Protanopia

56.3737, 58.5047, 63.5797

Deuteranopia

59.8324, 58.6370, 61.5907



Tritanopia

60.5793, 58.2236, 67.7199

Trichromacy



Original Color

59.5269, 58.4796, 61.5764

Protanomaly

57.4834, 58.4072, 62.8876

Deuteranomaly

59.8324, 58.6370, 61.5907

Tritanomaly

60.3151, 58.4728, 65.2342

Monochromacy



Original Color

59.5269, 58.4796, 61.5764

Achromatopsia

56.7640, 59.7202, 65.0353

Achromatomaly

57.7752, 59.2272, 63.6453

CSS Examples

Text

The CSS property to change the color of the text to XYZ 59.5269, 58.4796, 61.5764 is called "color". The color property can be set on classes, ids or directly on the HTML element.

This example shows how text in the color `rgb(221, 195, 198)` looks like.

```
.text, #text, p{  
    color:rgb(221, 195, 198)  
}
```

If you want to add a text shadow in that color use the text-shadow property, you can generate a text shadow directly with our [CSS Text Shadow Generator](#).

Here you see how black text with a 4 pixel rgb(221, 195, 198) colored shadow looks like.

```
.shadow{ text-shadow: 4px 4px 2px rgb(221, 195, 198) }
```

Border

The CSS property to change the border of an element to XYZ 59.5269, 58.4796, 61.5764 is called "border". The border property can be set on classes, ids or directly on the HTML element.

This example shows the color as border, it can be applied via the CSS property "border" or "border-color".

```
.border, #border, table{ border:4px solid rgb(221, 195, 198) }
```


If only the border color should be changed use the property `border-color`.

```
.border{ border-color:rgb(221, 195, 198) }
```

If you want to add a box shadow in that color use:

Here you see how a box with a 4 pixel `rgb(221, 195, 198)` colored shadow looks like.

```
.boxshadow{ -moz-box-shadow:4px 4px 4px 4px rgb(221, 195, 198); -webkit-box-shadow:4px 4px 4px 4px rgb(221, 195, 198); box-shadow:4px 4px 4px 4px rgb(221, 195, 198) }
```

Background

The CSS property to change the background color of an element to XYZ 59.5269, 58.4796, 61.5764 is called "background". The background property can be set on classes, ids or directly on the HTML element.

```
.background, #background, body{  
background: rgb(221, 195, 198) }
```

If only the background color should be changed can be used:

```
.background{ background-color: rgb(221,  
195, 198) }
```

This example shows the color as background, it is applied via the CSS property "background".

To optimize and compress your CSS code, you can use our [online CSS compressor and optimizer](#) based on csstidy. If you want to create a linear or radial gradient as background or border, check our [CSS Gradient Generator](#).

Hey! You found this booklet interesting? Support Converting Colors with the new Membership Option!

The pro membership hides all ads, plus gives you double the colors in the color bucket, and more awesome pro features!

[Learn more, Memberships starting at \\$2.50/m!](#)

**Follow me
on Twitter!**

@ConvertingColor