

Converting Colors

XYZ(59.6354, 57.4362, 57.5170)

Have a look what the booklet for
XYZ(59.6354, 57.4362, 57.5170)
contains.

XYZ(59.3988, 57.1919, 57.1987)	3
<i>Conversions</i>	4
<i>Details</i>	6
<i>Harmonies</i>	12
<i>Previews</i>	24
<i>Color Blindness Simulation</i>	28
<i>CSS Examples</i>	31

Color

**XYZ(59.3988, 57.1919,
57.1987)**

Conversions

Conversions Part 1

Format	Color
Hex	E2BFBF
RGB	226, 191, 191
RGB Percent	89%, 75%, 75%
CMY	0.1137, 0.2510, 0.2510
CMYK	0.00, 0.15, 0.15, 0.11
HSL	0°, 38%, 82%
HSV	0°, 15%, 89%
XYZ	59.3988, 57.1919, 57.1987
YIQ	201.4650, 20.8600, 7.4200

Conversions

Conversions Part 2

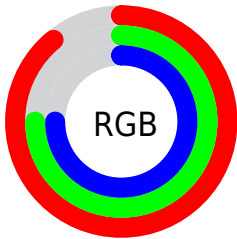
Format	Color
R_{YB}	226, 191, 191
Decimal	14860223
CIE _{Lab}	80.29, 12.45, 4.64
CIE _{LCh}	80, 13.284, 20.429
Yxy	57.1919, 0.3418, 0.3291
Android (android.graphics.Color)	4293050303 (0xFFE2BFBF)
YUV	201.4650, -5.1592, 21.5172
Hunter-Lab	75.6253, 7.8559, 8.0941

Details

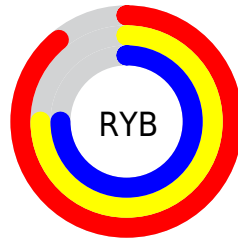
The XYZ color **59.3988, 57.1919, 57.1987** is a light color, and the websafe version is hex **FFCCCC**. A complement of this color would be **62.4093, 70.9586, 82.3592**, and the grayscale version is **55.8292, 58.7367, 63.9642**.

A 20% lighter version of the original color is **91.2893, 94.4969, 101.4240**, and **30.2535, 28.5580, 27.9625** is the 20% darker color. If you saturate the color by 10%, you get **52.5477, 47.1671, 43.5767**, and if you desaturate by 10%, it is **67.3972, 68.8959, 73.0978**.

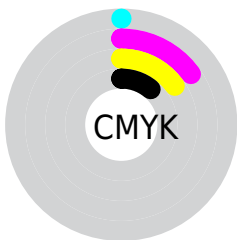
Distribution



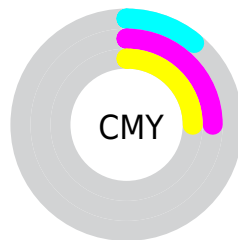
- Red (89%)
- Green (75%)
- Blue (75%)



- Red (89%)
- Yellow (75%)
- Blue (75%)



- Cyan (0%)
- Magenta (15%)
- Yellow (15%)
- Black (11%)





- Cyan (11%)
- Magenta (25%)
- Yellow (25%)

Brightness & Saturation Gradients


These gradients show how the XYZ color 59.3988, 57.1919, 57.1987 changes by changing the brightness by 10 percent. The first figure shows a shift by +10% for each color and the second figure -10%.


Similar to the brightness gradients but the following saturation gradients show a change of the XYZ color 59.3988, 57.1919, 57.1987 by changing the saturation by 10% instead.


 59.3988, 57.1919,
57.1987

 59.3988, 57.1919,
57.1987

412.2485,
414.1680, 431.7080

 43.1818, 41.1593,
40.7544


 103.0684,
100.7451, 102.2583

 30.2230, 28.4436,
27.8089


131.2517,
129.0346, 131.7106

 20.1568, 18.6603,
17.9439


164.1545,
162.1785, 166.3360

 12.6180, 11.4251,
10.7407

202.1422,
200.5612, 206.5530

 7.2412, 6.3535,
5.7808

245.5801,
244.5671, 252.7802

 3.6611, 3.0612,
2.6456

294.8335,

 1.5122, 1.1638,

294.5806, 305.4360

0.9159

350.2679,
350.9861, 364.9391

■ 0.3341, 0.0318,
0.0000

■ 0.0000, 0.0000,
0.0000

■ 59.3988, 57.1919,
57.1987

■ 59.3988, 57.1919,
57.1987

■ 52.5477, 47.1671,
43.5767

■ 67.3972, 68.8959,
73.0978

■ 46.7868, 38.7374,
32.1242

■ 76.5871, 82.3431,
91.3677

■ 42.0614, 31.8228,
22.7305

■ 85.1743, 94.9089,
108.4378

■ 38.3102, 26.3335,
15.2734

■ 35.4651, 22.1703,
9.6180

■ 33.4498, 19.2211,
5.6120

■ 32.1750, 17.3555,
3.0784

■ 31.5312, 16.4132,
1.7991

■ 31.3646, 16.1694,
1.4679

Harmonies

Analogous

The Analogous color harmony consists of three colors that are next to each other on the color wheel.



59.6704, 57.1919, 64.7909



59.3988, 57.1919, 57.1987



57.7526, 57.1919, 51.4452

Triad

The Triadic color harmony groups three colors that are evenly spaced from another and form a triangle on the color wheel.



59.3988, 57.1919, 57.1987



50.4341, 57.1919, 53.2265



53.4959, 57.1919, 78.2068

Complementary

The Complementary color scheme is a pair of colors which are on the opposite of each other on the color wheel.



59.3988, 57.1919, 57.1987



62.4093, 70.9586, 82.3592

Split Complementary

Split-complementary colors differ from the complementary color scheme. The scheme consists of three colors, the original color and two neighbors of the complement color.



51.1014, 57.1919, 74.5209



59.3988, 57.1919, 57.1987



49.3728, 57.1919, 59.8197

Square

The Square scheme is like the rectangle color scheme, but the four colors are evenly spaced on the color wheel.



59.3988, 57.1919, 57.1987



52.5575, 57.1919, 49.2878



49.6130, 57.1919, 67.6373



56.2016, 57.1919, 77.3577

Rectangle

The Rectangle color scheme consists of four colors that form a rectangle on the color wheel.



59.3988, 57.1919, 57.1987



56.1265, 57.1919, 49.2222



49.6130, 57.1919, 67.6373



52.6294, 57.1919, 77.4462

Sweetspot

The Sweet Spot groups the original color and five complimentary colors.



59.4004, 57.1945, 57.1999



89.1316, 91.3399, 97.1340



63.7230, 58.9221, 79.9667



18.9067, 19.3000, 20.4504



0.0000, 0.0000, 0.0000



20.3446, 21.4041, 23.3091

Same Dimension

The Same Dimension uses a secret algorithm to generate beautiful new colors.



59.4004, 57.1945, 57.1999



74.6528, 70.1536, 68.3498



63.4467, 65.2870, 58.5487



13.7074, 13.7008, 14.2288



17.8934, 9.2247, 0.8375



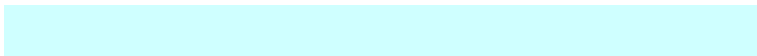
1.2403, 0.6395, 0.0581

Inverse Universe

The Inverse Universe completely reimagines the original color for something new.



62.4093, 70.9586, 82.3592



79.4148, 91.9372, 108.1678



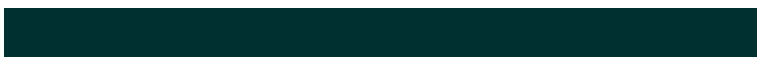
57.8920, 61.9241, 80.8534



14.1165, 15.5721, 17.6494



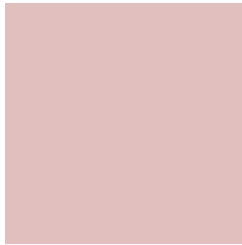
23.3431, 34.1558, 46.4108



1.6181, 2.3676, 3.2170

Previews

White Background



This preview shows how the XYZ color 59.3988, 57.1919, 57.1987 looks on a white background.

Color Contrast Check

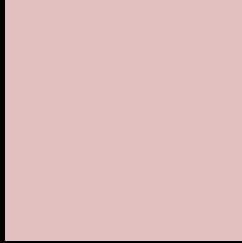
Large Text (above 18pt) WCAG AA × Fail

Any Text WCAG AA × Fail

Large Text (above 18pt) WCAG AAA × Fail

Any Text WCAG AAA × Fail

Black Background



This preview shows how the XYZ color 59.3988, 57.1919, 57.1987 looks on a black background.

Color Contrast Check

Large Text (above 18pt) WCAG AA ✓ Pass

Any Text WCAG AA ✓ Pass

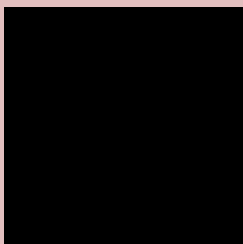
Large Text (above 18pt) WCAG AAA ✓ Pass

Any Text WCAG AAA ✓ Pass

If you want to check with other color combinations, try the [Color Contrast Checker](#).

XYZ 59.3988, 57.1919, 57.1987

Background



This preview shows how black text looks on a background with the XYZ color 59.3988, 57.1919, 57.1987.



This preview shows how white text looks on a background with the XYZ color 59.3988, 57.1919, 57.1987.

57.1987.

Color Blindness Simulation

Color vision deficiency is a very complex topic, and I could not describe the different causes any better than Wikipedia does, so if you want to learn more, you should check out their [article about color blindness](#).

Dichromacy



Original Color

59.3988, 57.1919, 57.1987

Protanopia

54.9462, 57.1657, 59.7679

Deuteranopia

58.5981, 57.4311, 57.2871



Tritanopia

61.0916, 57.2488, 64.9570

Trichromacy



Original Color

59.3988, 57.1919, 57.1987

Protanomaly

56.4041, 56.9223, 59.0532

Deuteranomaly

58.6850, 57.1488, 57.2280

Tritanomaly

60.4008, 57.2813, 61.9058

Monochromacy



Original Color

59.3988, 57.1919, 57.1987

Achromatopsia

55.5167, 58.4078, 63.6061

Achromatomaly

56.6226, 57.6654, 60.9695

CSS Examples

Text

The CSS property to change the color of the text to XYZ 59.3988, 57.1919, 57.1987 is called "color". The color property can be set on classes, ids or directly on the HTML element.

This example shows how text in the color `rgb(226, 191, 191)` looks like.

```
.text, #text, p{  
    color:rgb(226, 191, 191)  
}
```

If you want to add a text shadow in that color use the text-shadow property, you can generate a text shadow directly with our [CSS Text Shadow Generator](#).

Here you see how black text with a 4 pixel rgb(226, 191, 191) colored shadow looks like.

```
.shadow{ text-shadow: 4px 4px 2px rgb(226, 191, 191) }
```

Border

The CSS property to change the border of an element to XYZ 59.3988, 57.1919, 57.1987 is called "border". The border property can be set on classes, ids or directly on the HTML element.

This example shows the color as border, it can be applied via the CSS property "border" or "border-color".

```
.border, #border, table{ border:4px solid rgb(226, 191, 191) }
```


If only the border color should be changed use the property `border-color`.

```
.border{ border-color:rgb(226, 191, 191) }
```

If you want to add a box shadow in that color use:

Here you see how a box with a 4 pixel `rgb(226, 191, 191)` colored shadow looks like.

```
.boxshadow{ -moz-box-shadow:4px 4px 4px  
4px rgb(226, 191, 191); -webkit-box-  
shadow:4px 4px 4px 4px rgb(226, 191, 191);  
box-shadow:4px 4px 4px 4px rgb(226, 191,  
191) }
```

Background

The CSS property to change the background color of an element to XYZ 59.3988, 57.1919, 57.1987 is called "background". The background property can be set on classes, ids or directly on the HTML element.

```
.background, #background, body{  
background: rgb(226, 191, 191) }
```

If only the background color should be changed can be used:

```
.background{ background-color: rgb(226,  
191, 191) }
```

This example shows the color as background, it is applied via the CSS property "background".

To optimize and compress your CSS code, you can use our [online CSS compressor and optimizer](#) based on csstidy. If you want to create a linear or radial gradient as background or border, check our [CSS Gradient Generator](#).

Hey! You found this booklet interesting? Support Converting Colors with the new Membership Option!

The pro membership hides all ads, plus gives you double the colors in the color bucket, and more awesome pro features!

[Learn more, Memberships starting at \\$2.50/m!](#)

**Follow me
on Twitter!**

@ConvertingColor