

Converting Colors

XYZ(59.6475, 58.6729, 57.2771)

Have a look what the booklet for
XYZ(59.6475, 58.6729, 57.2771)
contains.

XYZ(59.6595, 58.6391, 57.4643)	3
<i>Conversions</i>	4
<i>Details</i>	6
<i>Harmonies</i>	12
<i>Previews</i>	24
<i>Color Blindness Simulation</i>	28
<i>CSS Examples</i>	31

Color

**XYZ(59.6595, 58.6391,
57.4643)**

Conversions

Conversions Part 1

Format	Color
Hex	E0C3BF
RGB	224, 195, 191
RGB Percent	88%, 76%, 75%
CMY	0.1216, 0.2353, 0.2510
CMYK	0.00, 0.13, 0.15, 0.12
HSL	7°, 35%, 81%
HSV	7°, 15%, 88%
XYZ	59.6595, 58.6391, 57.4643
YIQ	203.2150, 18.5680, 4.9040

Conversions

Conversions Part 2

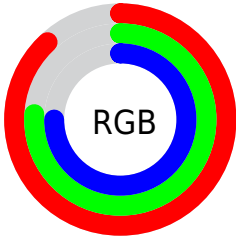
Format	Color
R_{YB}	224, 196, 191
Decimal	14730175
CIE _{Lab}	81.09, 9.60, 5.78
CIE _{LCh}	81, 11.205, 31.030
Yxy	58.6391, 0.3394, 0.3336
Android (android.graphics.Color)	4292920255 (0xFFE0C3BF)
YUV	203.2150, -6.0220, 18.2284
Hunter-Lab	76.5762, 5.0587, 9.1109

Details

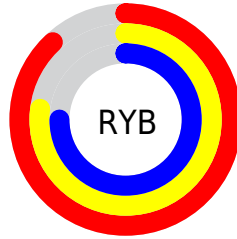
The XYZ color **59.6595, 58.6391, 57.4643** is a light color, and the websafe version is hex **FFCCCC**. A complement of this color would be **60.5331, 67.6429, 80.3874**, and the grayscale version is **56.9296, 59.8944, 65.2250**.

A 20% lighter version of the original color is **92.8389, 97.5962, 101.9405**, and **30.2608, 29.2096, 28.0879** is the 20% darker color. If you saturate the color by 10%, you get **53.2577, 49.4830, 44.0844**, and if you desaturate by 10%, it is **67.0229, 69.1138, 73.0261**.

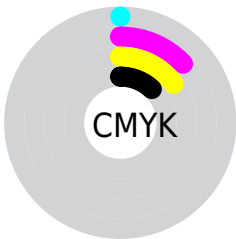
Distribution



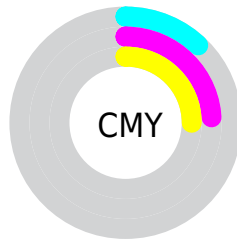
- Red (88%)
- Green (76%)
- Blue (75%)



- Red (88%)
- Yellow (77%)
- Blue (75%)



- Cyan (0%)
- Magenta (13%)
- Yellow (15%)
- Black (12%)





- Cyan (12%)
- Magenta (24%)
- Yellow (25%)

Brightness & Saturation Gradients


These gradients show how the XYZ color 59.6595, 58.6391, 57.4643 changes by changing the brightness by 10 percent. The first figure shows a shift by +10% for each color and the second figure -10%.

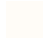
Similar to the brightness gradients but the following saturation gradients show a change of the XYZ color 59.6595, 58.6391, 57.4643 by changing the saturation by 10% instead.


 59.6595, 58.6391,
57.4643

 59.6595, 58.6391,
57.4643


413.1964,
419.5632, 432.7292

 43.3927, 42.3227,
40.9663


 103.4447,
102.8530, 102.6494

 30.3892, 29.3540,
27.9732


131.6938,
131.5192, 132.1736

 20.2837, 19.3488,
18.0666

164.6677,
165.0707, 166.8769

 12.7109, 11.9226,
10.8279

202.7317,
203.8921, 207.1778

 7.3054, 6.6910,
5.8385

246.2513,
248.3676, 253.4950

 3.7018, 3.2696,
2.6799

295.5917,

 1.5349, 1.2741,

298.8817, 306.2469

0.9333

351.1183,
355.8188, 365.8522

0.3494, 0.1210,
0.0000

0.0000, 0.0000,
0.0000

59.6595, 58.6391,
57.4643

59.6595, 58.6391,
57.4643

53.2577, 49.4830,
44.0844

67.0229, 69.1138,
73.0261

47.7730, 41.5857,
32.7852

75.3803, 80.9483,
90.8574

43.1646, 34.8945,
23.4632

84.2489, 93.9838,
108.3080

39.3867, 29.3497,
16.0044

84.5506, 94.5874,
108.4086

■ 36.3894, 24.8867,
10.2830

■ 34.1171, 21.4344,
6.1580

■ 32.5069, 18.9132,
3.4659

■ 31.4846, 17.2310,
2.0080

■ 31.1367, 16.6395,
1.5707

Harmonies

Analogous

The Analogous color harmony consists of three colors that are next to each other on the color wheel.



60.3316, 58.6391, 63.6178



59.6595, 58.6391, 57.4643



57.9313, 58.6391, 53.2752

Triad

The Triadic color harmony groups three colors that are evenly spaced from another and form a triangle on the color wheel.



59.6595, 58.6391, 57.4643



51.9091, 58.6391, 57.8373



55.8152, 58.6391, 77.5441

Complementary

The Complementary color scheme is a pair of colors which are on the opposite of each other on the color wheel.



59.6595, 58.6391, 57.4643



60.5331, 67.6429, 80.3874

Split Complementary

Split-complementary colors differ from the complementary color scheme. The scheme consists of three colors, the original color and two neighbors of the complement color.



53.5944, 58.6391, 75.7345



59.6595, 58.6391, 57.4643



51.3774, 58.6391, 64.0788

Square

The Square scheme is like the rectangle color scheme, but the four colors are evenly spaced on the color wheel.



59.6595, 58.6391, 57.4643



53.4587, 58.6391, 53.4798



51.9859, 58.6391, 70.6878



58.0744, 58.6391, 75.4765

Rectangle

The Rectangle color scheme consists of four colors that form a rectangle on the color wheel.



59.6595, 58.6391, 57.4643



56.4356, 58.6391, 52.0026



51.9859, 58.6391, 70.6878



55.0396, 58.6391, 77.3681

Sweetspot

The Sweet Spot groups the original color and five complimentary colors.



59.6611, 58.6417, 57.4655



90.6581, 93.7748, 99.5484



62.3100, 58.2849, 75.7808



19.2330, 19.8282, 20.9429



0.0000, 0.0000, 0.0000



20.3446, 21.4041, 23.3091

Same Dimension

The Same Dimension uses a secret algorithm to generate beautiful new colors.



59.6611, 58.6417, 57.4655



76.9774, 74.3011, 70.6709



63.5263, 66.3721, 58.7539



13.8406, 13.9671, 14.2732



18.1678, 9.7735, 0.9289



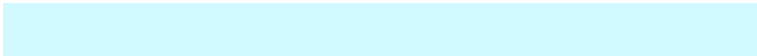
1.3041, 0.7670, 0.0793

Inverse Universe

The Inverse Universe completely reimagines the original color for something new.



60.5331, 67.6429, 80.3874



78.3817, 88.8077, 107.6182



56.4509, 59.4785, 79.0266



13.9672, 15.2735, 17.5996



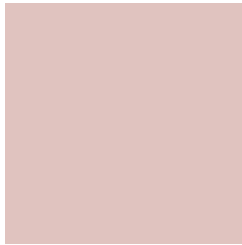
19.4865, 26.4425, 45.1252



1.3912, 1.9139, 3.1413

Previews

White Background



This preview shows how the XYZ color 59.6595, 58.6391, 57.4643 looks on a white background.

Color Contrast Check

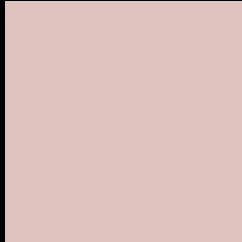
Large Text (above 18pt) WCAG AA × Fail

Any Text WCAG AA × Fail

Large Text (above 18pt) WCAG AAA × Fail

Any Text WCAG AAA × Fail

Black Background



This preview shows how the XYZ color 59.6595, 58.6391, 57.4643 looks on a black background.

Color Contrast Check

Large Text (above 18pt) WCAG AA ✓ Pass

Any Text WCAG AA ✓ Pass

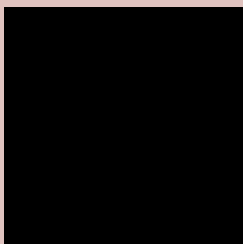
Large Text (above 18pt) WCAG AAA ✓ Pass

Any Text WCAG AAA ✓ Pass

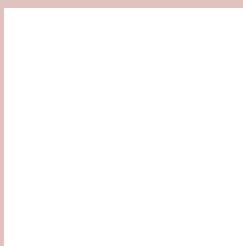
If you want to check with other color combinations, try the [Color Contrast Checker](#).

XYZ 59.6595, 58.6391, 57.4643

Background



This preview shows how black text looks on a background with the XYZ color 59.6595, 58.6391, 57.4643.



This preview shows how white text looks on a background with the XYZ color 59.6595, 58.6391,

57.4643.

Color Blindness Simulation

Color vision deficiency is a very complex topic, and I could not describe the different causes any better than Wikipedia does, so if you want to learn more, you should check out their [article about color blindness](#).

Dichromacy



Original Color

59.6595, 58.6391, 57.4643

Protanopia

56.3564, 58.9337, 59.4440

Deuteranopia

59.9704, 58.7994, 57.4788



Tritanopia

61.5988, 58.4221, 67.7045

Trichromacy



Original Color

59.6595, 58.6391, 57.4643

Protanomaly

57.4896, 58.8432, 58.7799

Deuteranomaly

59.9704, 58.7994, 57.4788

Tritanomaly

60.7820, 58.4117, 63.9482

Monochromacy



Original Color

59.6595, 58.6391, 57.4643

Achromatopsia

56.7640, 59.7202, 65.0353

Achromatomaly

57.8270, 59.2810, 62.4274

CSS Examples

Text

The CSS property to change the color of the text to XYZ 59.6595, 58.6391, 57.4643 is called "color". The color property can be set on classes, ids or directly on the HTML element.

This example shows how text in the color `rgb(224, 195, 191)` looks like.

```
.text, #text, p{  
    color:rgb(224, 195, 191)  
}
```

If you want to add a text shadow in that color use the text-shadow property, you can generate a text shadow directly with our [CSS Text Shadow Generator](#).

Here you see how black text with a 4 pixel rgb(224, 195, 191) colored shadow looks like.

```
.shadow{ text-shadow: 4px 4px 2px rgb(224, 195, 191) }
```

Border

The CSS property to change the border of an element to XYZ 59.6595, 58.6391, 57.4643 is called "border". The border property can be set on classes, ids or directly on the HTML element.

This example shows the color as border, it can be applied via the CSS property "border" or "border-color".

```
.border, #border, table{ border:4px solid rgb(224, 195, 191) }
```


If only the border color should be changed use the property border-color.

```
.border{ border-color:rgb(224, 195, 191) }
```

If you want to add a box shadow in that color use:

Here you see how a box with a 4 pixel rgb(224, 195, 191) colored shadow looks like.

```
.boxshadow{ -moz-box-shadow:4px 4px 4px  
4px rgb(224, 195, 191); -webkit-box-  
shadow:4px 4px 4px 4px rgb(224, 195, 191);  
box-shadow:4px 4px 4px 4px rgb(224, 195,  
191) }
```

Background

The CSS property to change the background color of an element to XYZ 59.6595, 58.6391, 57.4643 is called "background". The background property can be set on classes, ids or directly on the HTML element.

```
.background, #background, body{  
background: rgb(224, 195, 191) }
```

If only the background color should be changed can be used:

```
.background{ background-color: rgb(224,  
195, 191) }
```

This example shows the color as background, it is applied via the CSS property "background".

To optimize and compress your CSS code, you can use our [online CSS compressor and optimizer](#) based on csstidy. If you want to create a linear or radial gradient as background or border, check our [CSS Gradient Generator](#).

Hey! You found this booklet interesting? Support Converting Colors with the new Membership Option!

The pro membership hides all ads, plus gives you double the colors in the color bucket, and more awesome pro features!

[Learn more, Memberships starting at \\$2.50/m!](#)

**Follow me
on Twitter!**

@ConvertingColor