

Converting Colors

XYZ(59.6641, 53.3752, 57.2433)

Have a look what the booklet for
XYZ(59.6641, 53.3752, 57.2433)
contains.

XYZ(59.6958, 53.3087, 57.0125)	3
<i>Conversions</i>	4
<i>Details</i>	6
<i>Harmonies</i>	12
<i>Previews</i>	24
<i>Color Blindness Simulation</i>	28
<i>CSS Examples</i>	31

Color

**XYZ(59.6958, 53.3087,
57.0125)**

Conversions

Conversions Part 1

Format	Color
Hex	EBB2C0
RGB	235, 178, 192
RGB Percent	92%, 70%, 75%
CMY	0.0784, 0.3019, 0.2471
CMYK	0.00, 0.24, 0.18, 0.08
HSL	345°, 59%, 81%
HSV	345°, 24%, 92%
XYZ	59.6958, 53.3087, 57.0125
YIQ	196.6390, 29.4780, 16.4380

Conversions

Conversions Part 2

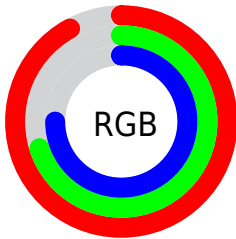
Format	Color
R _Y B	235, 178, 192
Decimal	15446720
CIE Lab	78.06, 22.77, 0.97
CIE LCh	78, 22.795, 2.430
Yxy	53.3087, 0.3511, 0.3135
Android (android.graphics.Color)	4293636800 (0xFFEBB2C0)
YUV	196.6390, -2.2870, 33.6426
Hunter-Lab	73.0128, 18.1705, 4.8120

Details

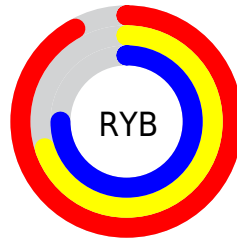
The XYZ color **59.6958, 53.3087, 57.0125** is a light color, and the websafe version is hex **FFCCCC**. A complement of this color would be **61.1218, 74.1035, 79.4921**, and the grayscale version is **52.8554, 55.6080, 60.5572**.

A 20% lighter version of the original color is **87.6061, 86.8829, 100.9597**, and **30.3539, 25.9963, 27.8441** is the 20% darker color. If you saturate the color by 10%, you get **53.5669, 44.0073, 45.8545**, and if you desaturate by 10%, it is **66.8653, 64.3115, 69.6862**.

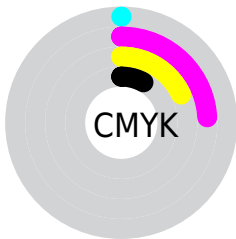
Distribution



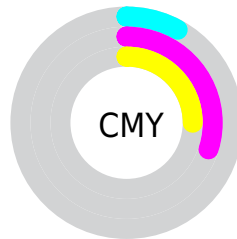
- Red (92%)
- Green (70%)
- Blue (75%)



- Red (92%)
- Yellow (70%)
- Blue (75%)



- Cyan (0%)
- Magenta (24%)
- Yellow (18%)
- Black (8%)



- Cyan (8%)
- Magenta (30%)
- Yellow (25%)

Brightness & Saturation Gradients

These gradients show how the XYZ color 59.6958, 53.3087, 57.0125 changes by changing the brightness by 10 percent. The first figure shows a shift by +10% for each color and the second figure -10%.

Similar to the brightness gradients but the following saturation gradients show a change of the XYZ color 59.6958, 53.3087, 57.0125 by changing the saturation by 10% instead.

59.6958, 53.3087,
57.0125

59.6958, 53.3087,
57.0125

413.3283,
399.4684, 430.9912

43.4220, 38.0493,
40.6058

103.4971, 95.0585,
101.9839

30.4123, 26.0209,
27.6939

131.7554,
122.3176, 131.3858

20.3014, 16.8393,
17.8580

164.7391,
154.3454, 165.9565

12.7239, 10.1200,
10.6797

202.8138,
191.5262, 206.1146

7.3143, 5.4786,
5.7404

246.3447,
234.2446, 252.2785

3.7075, 2.5307,
2.6217

295.6972,

1.5380, 0.8920,

282.8848, 304.8669

0.9036

351.2366,
337.8312, 364.2983

■ 0.3515, 0.0000,
0.0000

■ 0.0000, 0.0000,
0.0000

■ 59.6958, 53.3087,
57.0125

■ 59.6958, 53.3087,
57.0125

■ 53.5669, 44.0073,
45.8545

■ 66.8653, 64.3115,
69.6862

■ 48.4250, 36.3151,
36.1511

■ 75.1167, 77.0873,
83.9267

■ 44.2183, 30.1420,
27.8419

■ 84.4947, 91.7127,
99.7870

■ 40.8883, 25.3863,
20.8610

■ 88.0712, 96.4023,
108.5734

■ 38.3697, 21.9336,
15.1367

■ 36.5876, 19.6516,
10.5898

■ 35.4519, 18.3793,
7.1311

■ 35.0175, 17.9648,
5.5859

Harmonies

Analogous

The Analogous color harmony consists of three colors that are next to each other on the color wheel.



58.6282, 53.3087, 70.1256



59.6958, 53.3087, 57.0125



58.2297, 53.3087, 45.8827

Triad

The Triadic color harmony groups three colors that are evenly spaced from another and form a triangle on the color wheel.



59.6958, 53.3087, 57.0125



46.2219, 53.3087, 39.7389



46.8148, 53.3087, 82.5571

Complementary

The Complementary color scheme is a pair of colors which are on the opposite of each other on the color wheel.



59.6958, 53.3087, 57.0125



61.1218, 74.1035, 79.4921

Split Complementary

Split-complementary colors differ from the complementary color scheme. The scheme consists of three colors, the original color and two neighbors of the complement color.



43.7916, 53.3087, 72.1844



59.6958, 53.3087, 57.0125



43.4636, 53.3087, 47.4366

Square

The Square scheme is like the rectangle color scheme, but the four colors are evenly spaced on the color wheel.



59.6958, 53.3087, 57.0125



50.3068, 53.3087, 36.8631



42.6002, 53.3087, 59.0881



51.0315, 53.3087, 86.0938

Rectangle

The Rectangle color scheme consists of four colors that form a rectangle on the color wheel.



59.6958, 53.3087, 57.0125



56.0601, 53.3087, 40.7249



42.6002, 53.3087, 59.0881



45.6339, 53.3087, 79.6862

Sweetspot

The Sweet Spot groups the original color and five complimentary colors.



59.6973, 53.3111, 57.0136



87.5246, 88.2981, 96.0675



60.6604, 53.1745, 85.6644



18.6017, 18.6944, 20.3352



0.0000, 0.0000, 0.0000



20.3446, 21.4041, 23.3091

Same Dimension

The Same Dimension uses a secret algorithm to generate beautiful new colors.



59.6973, 53.3111, 57.0136



68.1071, 58.4613, 61.8547



61.2032, 58.6880, 50.2246



15.2171, 15.1147, 16.4288



19.5311, 10.0151, 3.3320



1.5709, 0.8013, 0.4577

Inverse Universe

The Inverse Universe completely reimagines the original color for something new.



59.6973, 53.3111, 57.0136



68.1071, 58.4613, 61.8547



59.1479, 67.0459, 88.4216



15.2171, 15.1147, 16.4288



19.5311, 10.0151, 3.3320



1.5709, 0.8013, 0.4577

Previews

White Background



This preview shows how the XYZ color 59.6958, 53.3087, 57.0125 looks on a white background.

Color Contrast Check

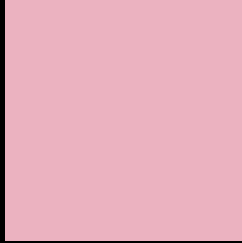
Large Text (above 18pt) WCAG AA × Fail

Any Text WCAG AA × Fail

Large Text (above 18pt) WCAG AAA × Fail

Any Text WCAG AAA × Fail

Black Background



This preview shows how the XYZ color 59.6958, 53.3087, 57.0125 looks on a black background.

Color Contrast Check

Large Text (above 18pt) WCAG AA ✓ Pass

Any Text WCAG AA ✓ Pass

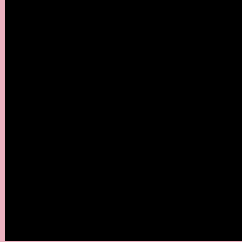
Large Text (above 18pt) WCAG AAA ✓ Pass

Any Text WCAG AAA ✓ Pass

If you want to check with other color combinations, try the [Color Contrast Checker](#).

XYZ 59.6958, 53.3087, 57.0125

Background



This preview shows how black text looks on a background with the XYZ color 59.6958, 53.3087, 57.0125.



This preview shows how white text looks on a background with the XYZ color 59.6958, 53.3087,

Color Blindness Simulation

Color vision deficiency is a very complex topic, and I could not describe the different causes any better than Wikipedia does, so if you want to learn more, you should check out their [article about color blindness](#).

Dichromacy



Original Color

59.6958, 53.3087, 57.0125

Protanopia

51.7806, 53.4715, 62.2355

Deuteranopia

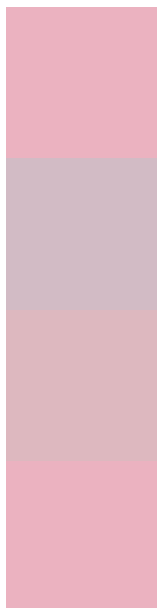
54.5052, 53.4045, 56.1506



Tritanopia

59.6958, 53.3087, 57.0125

Trichromacy



Original Color

59.6958, 53.3087, 57.0125

Protanomaly

54.4267, 53.2735, 60.2375

Deuteranomaly

56.3633, 53.4147, 56.6296

Tritanomaly

59.6958, 53.3087, 57.0125

Monochromacy



Original Color

59.6958, 53.3087, 57.0125

Achromatopsia

53.0703, 55.8340, 60.8033

Achromatomaly

55.1278, 54.6159, 59.2661

CSS Examples

Text

The CSS property to change the color of the text to XYZ 59.6958, 53.3087, 57.0125 is called "color". The color property can be set on classes, ids or directly on the HTML element.

This example shows how text in the color `rgb(235, 178, 192)` looks like.

```
.text, #text, p{  
    color:rgb(235, 178, 192)  
}
```

If you want to add a text shadow in that color use the text-shadow property, you can generate a text shadow directly with our [CSS Text Shadow Generator](#).

Here you see how black text with a 4 pixel rgb(235, 178, 192) colored shadow looks like.

```
.shadow{ text-shadow: 4px 4px 2px rgb(235, 178, 192) }
```

Border

The CSS property to change the border of an element to XYZ 59.6958, 53.3087, 57.0125 is called "border". The border property can be set on classes, ids or directly on the HTML element.

This example shows the color as border, it can be applied via the CSS property "border" or "border-color".

```
.border, #border, table{ border:4px solid rgb(235, 178, 192) }
```


If only the border color should be changed use the property `border-color`.

```
.border{ border-color:rgb(235, 178, 192) }
```

If you want to add a box shadow in that color use:

Here you see how a box with a 4 pixel `rgb(235, 178, 192)` colored shadow looks like.

```
.boxshadow{ -moz-box-shadow:4px 4px 4px  
4px rgb(235, 178, 192); -webkit-box-  
shadow:4px 4px 4px 4px rgb(235, 178, 192);  
box-shadow:4px 4px 4px 4px rgb(235, 178,  
192) }
```

Background

The CSS property to change the background color of an element to XYZ 59.6958, 53.3087, 57.0125 is called "background". The background property can be set on classes, ids or directly on the HTML element.

```
.background, #background, body{  
background: rgb(235, 178, 192) }
```

If only the background color should be changed can be used:

```
.background{ background-color: rgb(235,  
178, 192) }
```

This example shows the color as background, it is applied via the CSS property "background".

To optimize and compress your CSS code, you can use our [online CSS compressor and optimizer](#) based on csstidy. If you want to create a linear or radial gradient as background or border, check our [CSS Gradient Generator](#).

Hey! You found this booklet interesting? Support Converting Colors with the new Membership Option!

The pro membership hides all ads, plus gives you double the colors in the color bucket, and more awesome pro features!

[Learn more, Memberships starting at \\$2.50/m!](#)

**Follow me
on Twitter!**

@ConvertingColor