

# Converting Colors

XYZ(59.7470, 56.7074, 46.0695)

Have a look what the booklet for  
XYZ(59.7470, 56.7074, 46.0695)  
contains.

<b>XYZ(59.4999, 56.5309, 45.8058)</b> .....	3
<b><i>Conversions</i></b> .....	4
<b><i>Details</i></b> .....	6
<b><i>Harmonies</i></b> .....	12
<b><i>Previews</i></b> .....	24
<b><i>Color Blindness Simulation</i></b> .....	28
<b><i>CSS Examples</i></b> .....	31

# Color

**XYZ(59.4999, 56.5309,  
45.8058)**

# Conversions

## Conversions Part 1

<b>Format</b>	<b>Color</b>
Hex	EBBCAA
RGB	235, 188, 170
RGB Percent	92%, 74%, 67%
CMY	0.0784, 0.2627, 0.3333
CMYK	0.00, 0.20, 0.28, 0.08
HSL	17°, 62%, 79%
HSV	17°, 28%, 92%
XYZ	59.4999, 56.5309, 45.8058
YIQ	200.0010, 33.7900, 4.3660

# Conversions

## Conversions Part 2

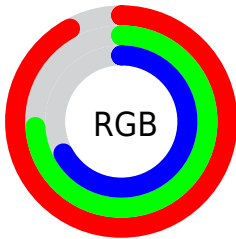
<b>Format</b>	<b>Color</b>
<b>R<sub>YB</sub></b>	235, 195, 170
Decimal	15449258
CIE <sub>Lab</sub>	79.92, 14.30, 15.51
CIE <sub>LCh</sub>	80, 21.095, 47.335
Yxy	56.5309, 0.3677, 0.3493
Android (android.graphics.Color)	4293639338 (0xFFEBBCAA)
YUV	200.0010, -14.7905, 30.6941
Hunter-Lab	75.1870, 9.6802, 16.5100

# Details

The XYZ color **59.4999, 56.5309, 45.8058** is a light color, and the websafe version is hex **FFCCCC**. A complement of this color would be **56.3852, 64.1681, 88.0114**, and the grayscale version is **54.9752, 57.8382, 62.9858**.

A 20% lighter version of the original color is **87.1813, 91.3976, 84.2807**, and **30.2941, 28.1009, 20.9669** is the 20% darker color. If you saturate the color by 10%, you get **54.0543, 48.8848, 33.9858**, and if you desaturate by 10%, it is **65.7733, 65.1959, 59.8634**.

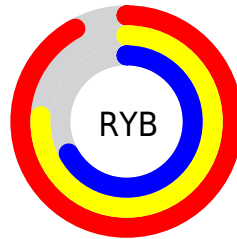
# Distribution



Red (92%)

Green (74%)

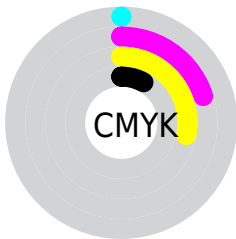
Blue (67%)



Red (92%)

Yellow (76%)

Blue (67%)

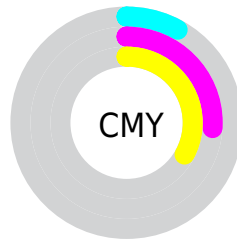


Cyan (0%)

Magenta (20%)

Yellow (28%)

Black (8%)



Cyan (8%)

Magenta (26%)


Yellow (33%)


# Brightness & Saturation Gradients

These gradients show how the XYZ color 59.4999, 56.5309, 45.8058 changes by changing the brightness by 10 percent. The first figure shows a shift by +10% for each color and the second figure -10%.


Similar to the brightness gradients but the following saturation gradients show a change of the XYZ color 59.4999, 56.5309, 45.8058 by changing the saturation by 10% instead.




 59.4999, 56.5309,  
45.8058

 59.4999, 56.5309,  
45.8058


412.6163,  
411.6892, 386.2822

 43.2636, 40.6287,  
31.7450


 103.2143, 99.7804,  
85.2595

 30.2874, 28.0291,  
20.9036


131.4232,  
127.8965, 111.4895

 20.2060, 18.3476,  
12.8630


164.3536,  
160.8527, 142.6131

 12.6540, 11.1998,  
7.2047

202.3709,  
199.0334, 179.0486

 7.2661, 6.2014,  
3.5100

245.8405,  
242.8230, 221.2148

 3.6769, 2.9679,  
1.3606

295.1276,

 1.5210, 1.1150,

292.6059, 269.5301

0.1107

350.5978,  
348.7665, 324.4131

■ 0.3401, 0.0000,  
0.0000

■ 0.0000, 0.0000,  
0.0000

■ 59.4999, 56.5309,  
45.8058

■ 59.4999, 56.5309,  
45.8058

■ 54.0543, 48.8848,  
33.9858

■ 65.7733, 65.1959,  
59.8634

■ 49.3960, 42.2116,  
24.2836

■ 72.9035, 74.9078,  
76.2629

■ 45.4877, 36.4737,  
16.5731

■ 80.9239, 85.7034,  
95.1066

■ 42.2873, 31.6274,  
10.7136

■ 88.0711, 96.4022,  
108.5734

■ 39.7478, 27.6257,  
6.5457

■ 37.8156, 24.4164,  
3.8822

■ 36.4237, 21.9393,  
2.4729

■ 36.1568, 21.4536,  
2.2353

# Harmonies

## Analogous

The Analogous color harmony consists of three colors that are next to each other on the color wheel.



61.9707, 56.5309, 54.7976



59.4999, 56.5309, 45.8058



55.5545, 56.5309, 41.3123

# Triad

The Triadic color harmony groups three colors that are evenly spaced from another and form a triangle on the color wheel.



59.4999, 56.5309, 45.8058



46.0992, 56.5309, 56.5311



56.2190, 56.5309, 86.8867

# Complementary

The Complementary color scheme is a pair of colors which are on the opposite of each other on the color wheel.



59.4999, 56.5309, 45.8058



56.3852, 64.1681, 88.0114

# Split Complementary

Split-complementary colors differ from the complementary color scheme. The scheme consists of three colors, the original color and two neighbors of the complement color.



51.9477, 56.5309, 87.5133



59.4999, 56.5309, 45.8058



46.2560, 56.5309, 68.8410

# Square

The Square scheme is like the rectangle color scheme, but the four colors are evenly spaced on the color wheel.



59.4999, 56.5309, 45.8058



47.9071, 56.5309, 46.9293



48.3474, 56.5309, 80.5486



60.0085, 56.5309, 78.9359



# Rectangle

The Rectangle color scheme consists of four colors that form a rectangle on the color wheel.



59.4999, 56.5309, 45.8058



52.6877, 56.5309, 41.0214



48.3474, 56.5309, 80.5486



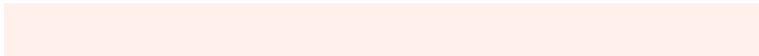
54.7878, 56.5309, 87.9951

# Sweetspot

The Sweet Spot groups the original color and five complimentary colors.



59.5014, 56.5335, 45.8070



87.4116, 89.7029, 91.0019



61.2475, 51.4568, 72.8057



18.4189, 18.8059, 18.8035



0.0000, 0.0000, 0.0000



20.3446, 21.4041, 23.3091



# Same Dimension

The Same Dimension uses a secret algorithm to generate beautiful new colors.



59.5014, 56.5335, 45.8070



67.9036, 62.8490, 47.0053



67.0666, 71.6639, 48.3287



15.4051, 15.7331, 15.7436



20.2148, 12.1238, 1.2747



1.6658, 1.1088, 0.1262



# Inverse Universe

The Inverse Universe completely reimagines the original color for something new.



56.3852, 64.1681, 88.0114



63.5816, 73.4004, 105.4243



48.9575, 49.3126, 85.5355



15.1445, 16.3754, 19.2848



16.4485, 19.5440, 46.6484

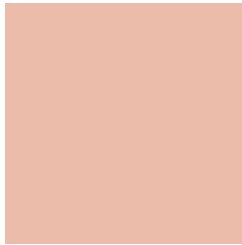


1.3716, 1.6946, 3.6897



# Previews

## White Background



This preview shows how the XYZ color 59.4999, 56.5309, 45.8058 looks on a white background.

## Color Contrast Check

Large Text (above 18pt) WCAG AA × Fail

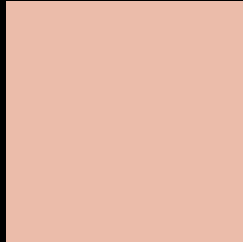
Any Text WCAG AA × Fail

Large Text (above 18pt) WCAG AAA × Fail

Any Text WCAG AAA × Fail



# Black Background



This preview shows how the XYZ color 59.4999, 56.5309, 45.8058 looks on a black background.

## Color Contrast Check

Large Text (above 18pt) WCAG AA ✓ Pass

Any Text WCAG AA ✓ Pass

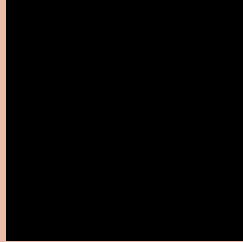
Large Text (above 18pt) WCAG AAA ✓ Pass

Any Text WCAG AAA ✓ Pass

If you want to check with other color combinations, try the [Color Contrast Checker](#).

**XYZ 59.4999, 56.5309, 45.8058**

## **Background**



This preview shows how black text looks on a background with the XYZ color 59.4999, 56.5309, 45.8058.



This preview shows how white text looks on a background with the XYZ color 59.4999, 56.5309,

45.8058.

# Color Blindness Simulation

Color vision deficiency is a very complex topic, and I could not describe the different causes any better than Wikipedia does, so if you want to learn more, you should check out their [article about color blindness](#).

## Dichromacy



### Original Color

59.4999, 56.5309, 45.8058

### Protanopia

53.6641, 56.7487, 48.6826

### Deuteranopia

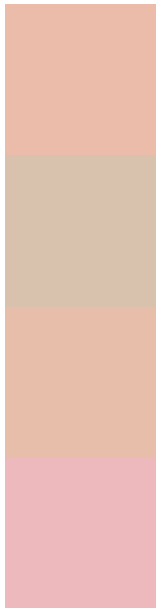
57.7871, 56.6202, 45.4192



## Tritanopia

62.5934, 56.5353, 61.0395

# Trichromacy



## Original Color

59.4999, 56.5309, 45.8058

## Protanomaly

55.4499, 56.3524, 47.4897

## Deuteranomaly

58.5299, 56.6804, 45.3917

## Tritanomaly

61.3511, 56.3333, 55.2168

# Monochromacy



## Original Color

59.4999, 56.5309, 45.8058

## Achromatopsia

54.8990, 57.7580, 62.8985

## Achromatomaly

56.3658, 57.3001, 56.2333

# CSS Examples

## Text

The CSS property to change the color of the text to XYZ 59.4999, 56.5309, 45.8058 is called "color". The color property can be set on classes, ids or directly on the HTML element.

This example shows how text in the color `rgb(235, 188, 170)` looks like.

```
.text, #text, p{  
    color:rgb(235, 188, 170)  
}
```

If you want to add a text shadow in that color use the text-shadow property, you can generate a text shadow directly with our [CSS Text Shadow Generator](#).

Here you see how black text with a 4 pixel rgb(235, 188, 170) colored shadow looks like.

```
.shadow{ text-shadow: 4px 4px 2px rgb(235, 188, 170) }
```

## Border

The CSS property to change the border of an element to XYZ 59.4999, 56.5309, 45.8058 is called "border". The border property can be set on classes, ids or directly on the HTML element.

This example shows the color as border, it can be applied via the CSS property "border" or "border-color".

```
.border, #border, table{ border:4px solid rgb(235, 188, 170) }
```



If only the border color should be changed use the property border-color.

```
.border{ border-color:rgb(235, 188, 170) }
```

If you want to add a box shadow in that color use:

Here you see how a box with a 4 pixel rgb(235, 188, 170) colored shadow looks like.

```
.boxshadow{ -moz-box-shadow:4px 4px 4px  
4px rgb(235, 188, 170); -webkit-box-  
shadow:4px 4px 4px 4px rgb(235, 188, 170);  
box-shadow:4px 4px 4px 4px rgb(235, 188,  
170) }
```

# Background

The CSS property to change the background color of an element to XYZ 59.4999, 56.5309, 45.8058 is called "background". The background property can be set on classes, ids or directly on the HTML element.

```
.background, #background, body{  
background: rgb(235, 188, 170) }
```

If only the background color should be changed can be used:

```
.background{ background-color: rgb(235,  
188, 170) }
```

This example shows the color as background, it is applied via the CSS property "background".

To optimize and compress your CSS code, you can use our [online CSS compressor and optimizer](#) based on csstidy. If you want to create a linear or radial gradient as background or border, check our [CSS Gradient Generator](#).

Hey! You found this booklet interesting? Support Converting Colors with the new Membership Option!

The pro membership hides all ads, plus gives you double the colors in the color bucket, and more awesome pro features!

**[Learn more, Memberships starting at \\$2.50/m!](#)**

**Follow me  
on Twitter!**

@ConvertingColor