

Converting Colors

XYZ(59.8175, 58.5940, 60.1626)

Have a look what the booklet for
XYZ(59.8175, 58.5940, 60.1626)
contains.

XYZ(59.9103, 58.7037, 60.3979)	3
<i>Conversions</i>	4
<i>Details</i>	6
<i>Harmonies</i>	12
<i>Previews</i>	24
<i>Color Blindness Simulation</i>	28
<i>CSS Examples</i>	31

Color

**XYZ(59.9103, 58.7037,
60.3979)**

Conversions

Conversions Part 1

Format	Color
Hex	DFC3C4
RGB	223, 195, 196
RGB Percent	87%, 76%, 77%
CMY	0.1255, 0.2353, 0.2314
CMYK	0.00, 0.13, 0.12, 0.13
HSL	358°, 30%, 82%
HSV	358°, 13%, 87%
XYZ	59.9103, 58.7037, 60.3979
YIQ	203.4860, 16.3670, 6.2470

Conversions

Conversions Part 2

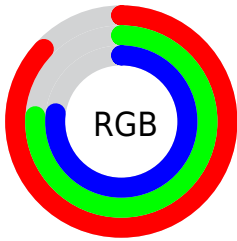
Format	Color
R _{YB}	223, 195, 196
Decimal	14664644
CIE Lab	81.13, 10.05, 3.13
CIE LCh	81, 10.524, 17.318
Yxy	58.7037, 0.3347, 0.3279
Android (android.graphics.Color)	4292854724 (0xFFDFC3C4)
YUV	203.4860, -3.6906, 17.1138
Hunter-Lab	76.6183, 5.4927, 6.8948

Details

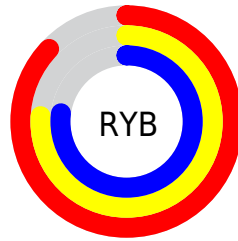
The XYZ color **59.9103, 58.7037, 60.3979** is a light color, and the websafe version is hex **FFCCCC**. A complement of this color would be **62.0804, 69.6528, 79.2829**, and the grayscale version is **57.0869, 60.0599, 65.4052**.

A 20% lighter version of the original color is **93.7800, 97.9727, 106.8964**, and **30.5558, 29.3276, 29.6415** is the 20% darker color. If you saturate the color by 10%, you get **53.0071, 48.5377, 46.8727**, and if you desaturate by 10%, it is **67.9139, 70.5077, 76.0226**.

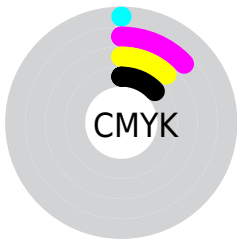
Distribution



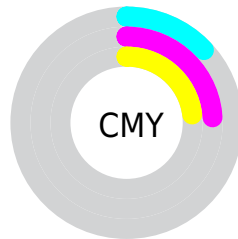
- Red (87%)
- Green (76%)
- Blue (77%)



- Red (87%)
- Yellow (76%)
- Blue (77%)



- Cyan (0%)
- Magenta (13%)
- Yellow (12%)
- Black (13%)



- Cyan (13%)
- Magenta (24%)
- Yellow (23%)

Brightness & Saturation Gradients

These gradients show how the XYZ color 59.9103, 58.7037, 60.3979 changes by changing the brightness by 10 percent. The first figure shows a shift by +10% for each color and the second figure -10%.

Similar to the brightness gradients but the following saturation gradients show a change of the XYZ color 59.9103, 58.7037, 60.3979 by changing the saturation by 10% instead.

■ 59.9103, 58.7037,
60.3979

■ 59.9103, 58.7037,
60.3979

414.1071,
419.8030, 443.9082

■ 43.5955, 42.3746,
43.3120

□ 103.8066,
102.9469, 106.9557

■ 30.5492, 29.3948,
29.7968

132.1189,
131.6298, 137.2647

■ 20.4060, 19.3797,
19.4337

165.1610,
165.1995, 172.8184

■ 12.8005, 11.9449,
11.8041

203.2983,
204.0403, 214.0356

■ 7.3673, 6.7062,
6.4895

246.8963,
248.5367, 261.3346

■ 3.7412, 3.2790,
3.0714

296.3201,

■ 1.5568, 1.2791,

299.0730, 315.1340

1.1312

351.9353,
356.0336, 375.8523

0.3640, 0.1249,
0.0000

0.0000, 0.0000,
0.0000

59.9103, 58.7037,
60.3979

59.9103, 58.7037,
60.3979

53.0071, 48.5377,
46.8727

67.9139, 70.5077,
76.0226

47.1516, 39.9299,
35.3539

77.0579, 84.0091,
93.8268

42.2940, 32.8057,
25.7472

84.2417, 94.4281,
108.3942

38.3787, 27.0813,
17.9491

■ 35.3446, 22.6645,
11.8463

■ 33.1233, 19.4523,
7.3130

■ 31.6365, 17.3259,
4.2056

■ 30.7904, 16.1426,
2.3543

■ 30.4751, 15.7055,
1.6531

Harmonies

Analogous

The Analogous color harmony consists of three colors that are next to each other on the color wheel.



60.0027, 58.7037, 66.6007



59.9103, 58.7037, 60.3979



58.6976, 58.7037, 55.4625

Triad

The Triadic color harmony groups three colors that are evenly spaced from another and form a triangle on the color wheel.



59.9103, 58.7037, 60.3979



52.7597, 58.7037, 56.0919



54.8774, 58.7037, 76.4106

Complementary

The Complementary color scheme is a pair of colors which are on the opposite of each other on the color wheel.



59.9103, 58.7037, 60.3979



62.0804, 69.6528, 79.2829

Split Complementary

Split-complementary colors differ from the complementary color scheme. The scheme consists of three colors, the original color and two neighbors of the complement color.



52.9919, 58.7037, 73.1927



59.9103, 58.7037, 60.3979



51.7909, 58.7037, 61.3090

Square

The Square scheme is like the rectangle color scheme, but the four colors are evenly spaced on the color wheel.



59.9103, 58.7037, 60.3979



54.5529, 58.7037, 53.0903



51.8747, 58.7037, 67.5730



57.0580, 58.7037, 76.1268

Rectangle

The Rectangle color scheme consists of four colors that form a rectangle on the color wheel.



59.9103, 58.7037, 60.3979



57.4345, 58.7037, 53.4319



51.8747, 58.7037, 67.5730



54.1892, 58.7037, 75.6942

Sweetspot

The Sweet Spot groups the original color and five complimentary colors.



59.9119, 58.7063, 60.3991



90.3382, 93.0464, 99.7151



62.8378, 59.8270, 78.0484



19.1524, 19.6448, 20.9849



0.0000, 0.0000, 0.0000



20.3446, 21.4041, 23.3091

Same Dimension

The Same Dimension uses a secret algorithm to generate beautiful new colors.



59.9119, 58.7063, 60.3991



78.6579, 75.8247, 76.8957



62.7419, 64.5470, 60.7849



13.7269, 13.7084, 14.3321



17.9275, 9.2380, 1.0180



1.2497, 0.6432, 0.1078

Inverse Universe

The Inverse Universe completely reimagines the original color for something new.



59.9119, 58.7063, 60.3991



78.6579, 75.8247, 76.8957



58.9726, 63.2229, 78.9076



13.7269, 13.7084, 14.3321



17.9275, 9.2380, 1.0180



1.2497, 0.6432, 0.1078

Previews

White Background



This preview shows how the XYZ color 59.9103, 58.7037, 60.3979 looks on a white background.

Color Contrast Check

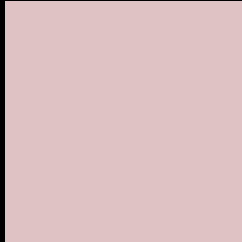
Large Text (above 18pt) WCAG AA × Fail

Any Text WCAG AA × Fail

Large Text (above 18pt) WCAG AAA × Fail

Any Text WCAG AAA × Fail

Black Background



This preview shows how the XYZ color 59.9103, 58.7037, 60.3979 looks on a black background.

Color Contrast Check

Large Text (above 18pt) WCAG AA ✓ Pass

Any Text WCAG AA ✓ Pass

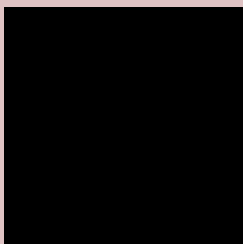
Large Text (above 18pt) WCAG AAA ✓ Pass

Any Text WCAG AAA ✓ Pass

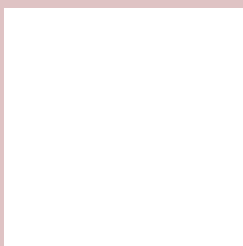
If you want to check with other color combinations, try the [Color Contrast Checker](#).

XYZ 59.9103, 58.7037, 60.3979

Background



This preview shows how black text looks on a background with the XYZ color 59.9103, 58.7037, 60.3979.



This preview shows how white text looks on a background with the XYZ color 59.9103, 58.7037,

Color Blindness Simulation

Color vision deficiency is a very complex topic, and I could not describe the different causes any better than Wikipedia does, so if you want to learn more, you should check out their [article about color blindness](#).

Dichromacy



Original Color

59.9103, 58.7037, 60.3979

Protanopia

56.6490, 59.0186, 62.4388

Deuteranopia

59.9103, 58.7037, 60.3979



Tritanopia

61.5065, 58.7015, 67.7633

Trichromacy



Original Color

59.9103, 58.7037, 60.3979

Protanomaly

57.7678, 58.9211, 61.7543

Deuteranomaly

59.9103, 58.7037, 60.3979

Tritanomaly

60.9313, 58.7905, 65.2630

Monochromacy



Original Color

59.9103, 58.7037, 60.3979

Achromatopsia

56.7640, 59.7202, 65.0353

Achromatomaly

57.6579, 59.1803, 63.0276

CSS Examples

Text

The CSS property to change the color of the text to XYZ 59.9103, 58.7037, 60.3979 is called "color". The color property can be set on classes, ids or directly on the HTML element.

This example shows how text in the color `rgb(223, 195, 196)` looks like.

```
.text, #text, p{  
    color:rgb(223, 195, 196)  
}
```

If you want to add a text shadow in that color use the text-shadow property, you can generate a text shadow directly with our [CSS Text Shadow Generator](#).

Here you see how black text with a 4 pixel rgb(223, 195, 196) colored shadow looks like.

```
.shadow{ text-shadow: 4px 4px 2px rgb(223, 195, 196) }
```

Border

The CSS property to change the border of an element to XYZ 59.9103, 58.7037, 60.3979 is called "border". The border property can be set on classes, ids or directly on the HTML element.

This example shows the color as border, it can be applied via the CSS property "border" or "border-color".

```
.border, #border, table{ border:4px solid rgb(223, 195, 196) }
```


If only the border color should be changed use the property `border-color`.

```
.border{ border-color:rgb(223, 195, 196) }
```

If you want to add a box shadow in that color use:

Here you see how a box with a 4 pixel `rgb(223, 195, 196)` colored shadow looks like.

```
.boxshadow{ -moz-box-shadow:4px 4px 4px  
4px rgb(223, 195, 196); -webkit-box-  
shadow:4px 4px 4px 4px rgb(223, 195, 196);  
box-shadow:4px 4px 4px 4px rgb(223, 195,  
196) }
```

Background

The CSS property to change the background color of an element to XYZ 59.9103, 58.7037, 60.3979 is called "background". The background property can be set on classes, ids or directly on the HTML element.

```
.background, #background, body{  
background: rgb(223, 195, 196) }
```

If only the background color should be changed can be used:

```
.background{ background-color: rgb(223,  
195, 196) }
```

This example shows the color as background, it is applied via the CSS property "background".

To optimize and compress your CSS code, you can use our [online CSS compressor and optimizer](#) based on csstidy. If you want to create a linear or radial gradient as background or border, check our [CSS Gradient Generator](#).

Hey! You found this booklet interesting? Support Converting Colors with the new Membership Option!

The pro membership hides all ads, plus gives you double the colors in the color bucket, and more awesome pro features!

[Learn more, Memberships starting at \\$2.50/m!](#)

**Follow me
on Twitter!**

@ConvertingColor