

Converting Colors

XYZ(59.8784, 56.6975, 60.3117)

Have a look what the booklet for
XYZ(59.8784, 56.6975, 60.3117)
contains.

XYZ(59.9542, 56.7573, 60.6187)	3
<i>Conversions</i>	4
<i>Details</i>	6
<i>Harmonies</i>	12
<i>Previews</i>	24
<i>Color Blindness Simulation</i>	28
<i>CSS Examples</i>	31

Color

**XYZ(59.9542, 56.7573,
60.6187)**

Conversions

Conversions Part 1

Format	Color
Hex	E3BDC5
RGB	227, 189, 197
RGB Percent	89%, 74%, 77%
CMY	0.1098, 0.2588, 0.2274
CMYK	0.00, 0.17, 0.13, 0.11
HSL	347°, 40%, 82%
HSV	347°, 17%, 89%
XYZ	59.9542, 56.7573, 60.6187
YIQ	201.2740, 20.0800, 10.5440

Conversions

Conversions Part 2

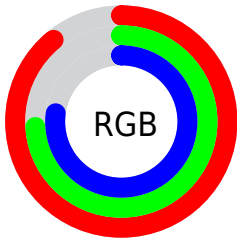
Format	Color
R _Y B	227, 189, 197
Decimal	14925253
CIE Lab	80.04, 14.83, 1.06
CIE LCh	80, 14.869, 4.092
Yxy	56.7573, 0.3381, 0.3201
Android (android.graphics.Color)	4293115333 (0xFFE3BDC5)
YUV	201.2740, -2.1071, 22.5617
Hunter-Lab	75.3374, 10.2114, 5.0297

Details

The XYZ color **59.9542, 56.7573, 60.6187** is a light color, and the websafe version is hex **FFCCCC**. A complement of this color would be **61.2438, 70.8729, 77.4732**, and the grayscale version is **55.6926, 58.5929, 63.8077**.

A 20% lighter version of the original color is **91.7818, 93.7206, 107.0184**, and **30.5567, 28.2494, 29.8288** is the 20% darker color. If you saturate the color by 10%, you get **53.5152, 46.9725, 48.9355**, and if you desaturate by 10%, it is **67.4048, 68.1733, 73.8452**.

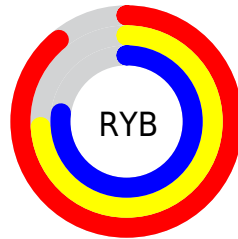
Distribution



Red (89%)

Green (74%)

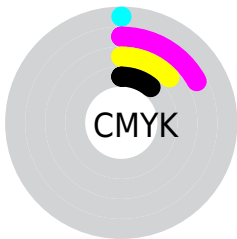
Blue (77%)



Red (89%)

Yellow (74%)

Blue (77%)

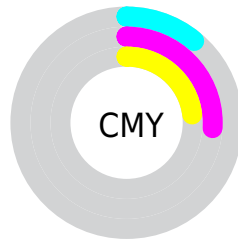


Cyan (0%)

Magenta (17%)

Yellow (13%)

Black (11%)



Cyan (11%)

Magenta (26%)

Yellow (23%)

Brightness & Saturation Gradients

These gradients show how the XYZ color 59.9542, 56.7573, 60.6187 changes by changing the brightness by 10 percent. The first figure shows a shift by +10% for each color and the second figure -10%.

Similar to the brightness gradients but the following saturation gradients show a change of the XYZ color 59.9542, 56.7573, 60.6187 by changing the saturation by 10% instead.

■ 59.9542, 56.7573,
60.6187

■ 59.9542, 56.7573,
60.6187

414.2664,
412.5393, 444.7423

■ 43.6310, 40.8104,
43.4890

■ 103.8699,
100.1110, 107.2788

■ 30.5772, 28.1710,
29.9347

132.1932,
128.2865, 137.6462

■ 20.4274, 18.4546,
19.5374

165.2473,
161.3071, 173.2633

■ 12.8161, 11.2768,
11.8785

203.3975,
199.5572, 214.5486

■ 7.3782, 6.2534,
6.5395

247.0091,
243.4210, 261.9206

■ 3.7481, 2.9997,
3.1018

296.4476,

■ 1.5607, 1.1316,

293.2830, 315.7978

1.1468

352.0782,
349.5276, 376.5989

■ 0.3666, 0.0047,
0.0000

■ 0.0000, 0.0000,
0.0000

■ 59.9542, 56.7573,
60.6187

■ 59.9542, 56.7573,
60.6187

■ 53.5152, 46.9725,
48.9355

■ 67.4048, 68.1733,
73.8452

■ 48.0391, 38.7369,
38.7352

■ 75.9034, 81.2824,
88.6650

■ 43.4802, 31.9730,
29.9588

■ 84.8152, 94.8016,
104.9053

■ 39.7872, 26.5934,
22.5419

■ 85.4888, 95.0710,
108.4525

■ 36.9035, 22.5017,
16.4150

■ 34.7658, 19.5886,
11.5022

■ 33.3005, 17.7268,
7.7191

■ 32.4161, 16.7545,
4.9686

■ 32.2076, 16.5426,
4.2671

Harmonies

Analogous

The Analogous color harmony consists of three colors that are next to each other on the color wheel.



59.3454, 56.7573, 69.3617



59.9542, 56.7573, 60.6187



58.9044, 56.7573, 52.9297

Triad

The Triadic color harmony groups three colors that are evenly spaced from another and form a triangle on the color wheel.



59.9542, 56.7573, 60.6187



50.7531, 56.7573, 49.0126



51.4460, 56.7573, 78.0151

Complementary

The Complementary color scheme is a pair of colors which are on the opposite of each other on the color wheel.



59.9542, 56.7573, 60.6187



61.2438, 70.8729, 77.4732

Split Complementary

Split-complementary colors differ from the complementary color scheme. The scheme consists of three colors, the original color and two neighbors of the complement color.



49.2741, 56.7573, 71.6077



59.9542, 56.7573, 60.6187



48.8847, 56.7573, 54.8071

Square

The Square scheme is like the rectangle color scheme, but the four colors are evenly spaced on the color wheel.



59.9542, 56.7573, 60.6187



53.5324, 56.7573, 46.6371



48.3534, 56.7573, 62.9946



54.3620, 56.7573, 79.9354

Rectangle

The Rectangle color scheme consists of four colors that form a rectangle on the color wheel.



59.9542, 56.7573, 60.6187



57.4275, 56.7573, 49.2723



48.3534, 56.7573, 62.9946



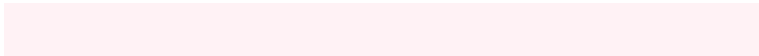
50.6084, 56.7573, 76.2870

Sweetspot

The Sweet Spot groups the original color and five complimentary colors.



59.9558, 56.7598, 60.6199



89.5378, 91.5017, 99.2752



61.2078, 56.9678, 80.4436



19.0050, 19.3392, 20.9686



0.0000, 0.0000, 0.0000



20.3446, 21.4041, 23.3091

Same Dimension

The Same Dimension uses a secret algorithm to generate beautiful new colors.



59.9558, 56.7598, 60.6199



75.0643, 69.3383, 73.5374



61.4660, 61.2079, 56.7219



14.5005, 14.4174, 15.5698



18.8179, 9.6614, 2.6701



1.4241, 0.7274, 0.3739

Inverse Universe

The Inverse Universe completely reimagines the original color for something new.



59.9558, 56.7598, 60.6199



75.0643, 69.3383, 73.5374



59.4691, 65.5981, 82.2010



14.5005, 14.4174, 15.5698



18.8179, 9.6614, 2.6701



1.4241, 0.7274, 0.3739

Previews

White Background



This preview shows how the XYZ color 59.9542, 56.7573, 60.6187 looks on a white background.

Color Contrast Check

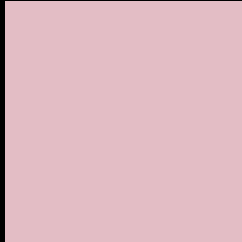
Large Text (above 18pt) WCAG AA × Fail

Any Text WCAG AA × Fail

Large Text (above 18pt) WCAG AAA × Fail

Any Text WCAG AAA × Fail

Black Background



This preview shows how the XYZ color 59.9542, 56.7573, 60.6187 looks on a black background.

Color Contrast Check

Large Text (above 18pt) WCAG AA ✓ Pass

Any Text WCAG AA ✓ Pass

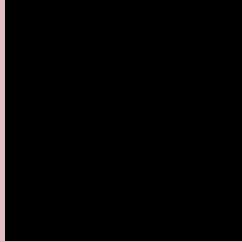
Large Text (above 18pt) WCAG AAA ✓ Pass

Any Text WCAG AAA ✓ Pass

If you want to check with other color combinations, try the [Color Contrast Checker](#).

XYZ 59.9542, 56.7573, 60.6187

Background



This preview shows how black text looks on a background with the XYZ color 59.9542, 56.7573, 60.6187.



This preview shows how white text looks on a background with the XYZ color 59.9542, 56.7573,

Color Blindness Simulation

Color vision deficiency is a very complex topic, and I could not describe the different causes any better than Wikipedia does, so if you want to learn more, you should check out their [article about color blindness](#).

Dichromacy



Original Color

59.9542, 56.7573, 60.6187

Protanopia

54.9421, 57.0699, 63.9970

Deuteranopia

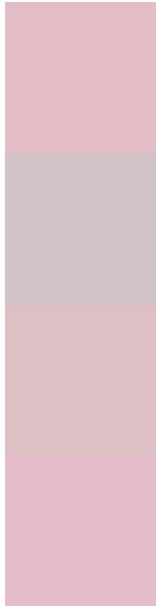
58.0269, 56.7449, 60.1191



Tritanopia

60.7576, 56.7722, 64.2558

Trichromacy



Original Color

59.9542, 56.7573, 60.6187

Protanomaly

56.5188, 56.9020, 62.6479

Deuteranomaly

58.7188, 56.7767, 60.0887

Tritanomaly

60.5207, 56.6775, 63.0084

Monochromacy



Original Color

59.9542, 56.7573, 60.6187

Achromatopsia

55.5167, 58.4078, 63.6061

Achromatomaly

56.9699, 57.8043, 62.7983

CSS Examples

Text

The CSS property to change the color of the text to XYZ 59.9542, 56.7573, 60.6187 is called "color". The color property can be set on classes, ids or directly on the HTML element.

This example shows how text in the color `rgb(227, 189, 197)` looks like.

```
.text, #text, p{  
    color:rgb(227, 189, 197)  
}
```

If you want to add a text shadow in that color use the text-shadow property, you can generate a text shadow directly with our [CSS Text Shadow Generator](#).

Here you see how black text with a 4 pixel rgb(227, 189, 197) colored shadow looks like.

```
.shadow{ text-shadow: 4px 4px 2px rgb(227, 189, 197) }
```

Border

The CSS property to change the border of an element to XYZ 59.9542, 56.7573, 60.6187 is called "border". The border property can be set on classes, ids or directly on the HTML element.

This example shows the color as border, it can be applied via the CSS property "border" or "border-color".

```
.border, #border, table{ border:4px solid rgb(227, 189, 197) }
```


If only the border color should be changed use the property `border-color`.

```
.border{ border-color:rgb(227, 189, 197) }
```

If you want to add a box shadow in that color use:

Here you see how a box with a 4 pixel `rgb(227, 189, 197)` colored shadow looks like.

```
.boxshadow{ -moz-box-shadow:4px 4px 4px  
4px rgb(227, 189, 197); -webkit-box-  
shadow:4px 4px 4px 4px rgb(227, 189, 197);  
box-shadow:4px 4px 4px 4px rgb(227, 189,  
197) }
```

Background

The CSS property to change the background color of an element to XYZ 59.9542, 56.7573, 60.6187 is called "background". The background property can be set on classes, ids or directly on the HTML element.

```
.background, #background, body{  
background: rgb(227, 189, 197) }
```

If only the background color should be changed can be used:

```
.background{ background-color: rgb(227,  
189, 197) }
```

This example shows the color as background, it is applied via the CSS property "background".

To optimize and compress your CSS code, you can use our [online CSS compressor and optimizer](#) based on csstidy. If you want to create a linear or radial gradient as background or border, check our [CSS Gradient Generator](#).

Hey! You found this booklet interesting? Support Converting Colors with the new Membership Option!

The pro membership hides all ads, plus gives you double the colors in the color bucket, and more awesome pro features!

[Learn more, Memberships starting at \\$2.50/m!](#)

**Follow me
on Twitter!**

@ConvertingColor