

Converting Colors

XYZ(59.8908, 58.2684, 64.5911)

Have a look what the booklet for
XYZ(59.8908, 58.2684, 64.5911)
contains.

XYZ(59.8901, 58.2675, 64.5901)	3
<i>Conversions</i>	4
<i>Details</i>	6
<i>Harmonies</i>	12
<i>Previews</i>	24
<i>Color Blindness Simulation</i>	28
<i>CSS Examples</i>	31

Color

**XYZ(59.8901, 58.2675,
64.5901)**

Conversions

Conversions Part 1

Format	Color
Hex	DDC2CB
RGB	221, 194, 203
RGB Percent	87%, 76%, 80%
CMY	0.1333, 0.2392, 0.2039
CMYK	0.00, 0.12, 0.08, 0.13
HSL	340°, 28%, 81%
HSV	340°, 12%, 87%
XYZ	59.8901, 58.2675, 64.5901
YIQ	203.0990, 13.2030, 8.5230

Conversions

Conversions Part 2

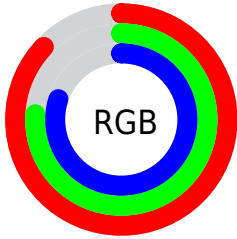
Format	Color
R _Y B	221, 194, 203
Decimal	14533323
CIE Lab	80.89, 11.04, -1.00
CIE LCh	81, 11.084, 354.821
Yxy	58.2675, 0.3277, 0.3188
Android (android.graphics.Color)	4292723403 (0xFFDDC2CB)
YUV	203.0990, -0.0488, 15.6992
Hunter-Lab	76.3332, 6.4660, 3.2643

Details

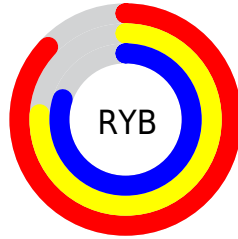
The XYZ color **59.8901, 58.2675, 64.5901** is a light color, and the websafe version is hex **CCCCCC**. A complement of this color would be **59.9905, 67.9373, 72.2421**, and the grayscale version is **56.8228, 59.7820, 65.1026**.

A 20% lighter version of the original color is **93.7872, 97.4744, 108.4791**, and **30.5288, 29.0331, 32.4287** is the 20% darker color. If you saturate the color by 10%, you get **53.6594, 48.4836, 54.2574**, and if you desaturate by 10%, it is **67.0225, 69.5862, 76.0482**.

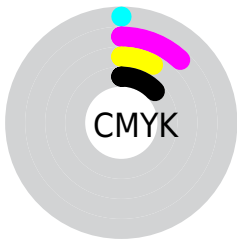
Distribution



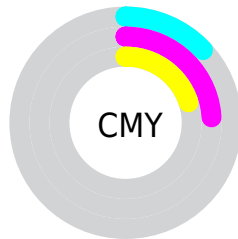
- Red (87%)
- Green (76%)
- Blue (80%)



- Red (87%)
- Yellow (76%)
- Blue (80%)



- Cyan (0%)
- Magenta (12%)
- Yellow (8%)
- Black (13%)



- Cyan (13%)
- Magenta (24%)
- Yellow (20%)

Brightness & Saturation Gradients

These gradients show how the XYZ color 59.8901, 58.2675, 64.5901 changes by changing the brightness by 10 percent. The first figure shows a shift by +10% for each color and the second figure -10%.

Similar to the brightness gradients but the following saturation gradients show a change of the XYZ color 59.8901, 58.2675, 64.5901 by changing the saturation by 10% instead.

■ 59.8901, 58.2675,
64.5901

■ 59.8901, 58.2675,
64.5901

414.0338,
418.1820, 459.5833

■ 43.5792, 42.0237,
46.6795

□ 103.7775,
102.3123, 113.0680

■ 30.5363, 29.1199,
32.4299

132.0846,
130.8821, 144.4724

■ 20.3961, 19.1715,
21.4225

165.1213,
164.3294, 181.2118

■ 12.7932, 11.7943,
13.2390

203.2527,
203.0386, 223.7048

■ 7.3623, 6.6038,
7.4606

246.8444,
247.3941, 272.3699

■ 3.7381, 3.2156,
3.6690

296.2615,

■ 1.5550, 1.2453,

297.7802, 327.6257

1.4456

351.8695,
354.5813, 389.8906

■ 0.3628, 0.0982,
0.1769

■ 0.0000, 0.0000,
0.0000

■ 59.8901, 58.2675,
64.5901

■ 59.8901, 58.2675,
64.5901

■ 53.6594, 48.4836,
54.2574

■ 67.0225, 69.5862,
76.0482

■ 48.2887, 40.1605,
45.0114

■ 75.0862, 82.4942,
88.6616

■ 43.7401, 33.2299,
36.8163

■ 82.3998, 93.6206,
101.8915

■ 39.9711, 27.6145,
29.6328

■ 83.6292, 94.1123,
108.3655

■ 36.9352, 23.2300,
23.4191

■ 34.5805, 19.9815,
18.1300

■ 32.8479, 17.7607,
13.7162

■ 31.6672, 16.4374,
10.1225

■ 31.0433, 15.8620,
7.8418

Harmonies

Analogous

The Analogous color harmony consists of three colors that are next to each other on the color wheel.



59.0644, 58.2675, 71.0007



59.8901, 58.2675, 64.5901



59.4808, 58.2675, 58.2884

Triad

The Triadic color harmony groups three colors that are evenly spaced from another and form a triangle on the color wheel.



59.8901, 58.2675, 64.5901



53.5510, 58.2675, 52.6579



52.8797, 58.2675, 74.3353

Complementary

The Complementary color scheme is a pair of colors which are on the opposite of each other on the color wheel.



59.8901, 58.2675, 64.5901



59.9905, 67.9373, 72.2421

Split Complementary

Split-complementary colors differ from the complementary color scheme. The scheme consists of three colors, the original color and two neighbors of the complement color.



51.4750, 58.2675, 68.8937



59.8901, 58.2675, 64.5901



51.8550, 58.2675, 56.4424

Square

The Square scheme is like the rectangle color scheme, but the four colors are evenly spaced on the color wheel.



59.8901, 58.2675, 64.5901



55.7805, 58.2675, 51.6793



51.1051, 58.2675, 62.3104



54.9845, 58.2675, 76.8697

Rectangle

The Rectangle color scheme consists of four colors that form a rectangle on the color wheel.



59.8901, 58.2675, 64.5901



58.5684, 58.2675, 54.9515



51.1051, 58.2675, 62.3104



52.3123, 58.2675, 72.7680

Sweetspot

The Sweet Spot groups the original color and five complimentary colors.



59.8918, 58.2701, 64.5913



90.8061, 93.2335, 102.1788



59.4964, 57.8038, 76.4289



19.2704, 19.6920, 21.6061



0.0000, 0.0000, 0.0000



20.3446, 21.4041, 23.3091

Same Dimension

The Same Dimension uses a secret algorithm to generate beautiful new colors.



59.8918, 58.2701, 64.5913



80.2008, 76.4418, 85.0204



59.8669, 59.8868, 59.4459



13.2341, 13.1227, 14.4941



18.0804, 9.2332, 4.8034



1.2106, 0.6139, 0.5177

Inverse Universe

The Inverse Universe completely reimagines the original color for something new.



59.8918, 58.2701, 64.5913



80.2008, 76.4418, 85.0204



59.9854, 66.0598, 77.9967



13.2341, 13.1227, 14.4941



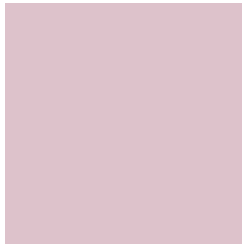
18.0804, 9.2332, 4.8034



1.2106, 0.6139, 0.5177

Previews

White Background



This preview shows how the XYZ color 59.8901, 58.2675, 64.5901 looks on a white background.

Color Contrast Check

Large Text (above 18pt) WCAG AA × Fail

Any Text WCAG AA × Fail

Large Text (above 18pt) WCAG AAA × Fail

Any Text WCAG AAA × Fail

Black Background



This preview shows how the XYZ color 59.8901, 58.2675, 64.5901 looks on a black background.

Color Contrast Check

Large Text (above 18pt) WCAG AA ✓ Pass

Any Text WCAG AA ✓ Pass

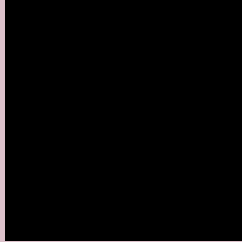
Large Text (above 18pt) WCAG AAA ✓ Pass

Any Text WCAG AAA ✓ Pass

If you want to check with other color combinations, try the [Color Contrast Checker](#).

XYZ 59.8901, 58.2675, 64.5901

Background



This preview shows how black text looks on a background with the XYZ color 59.8901, 58.2675, 64.5901.



This preview shows how white text looks on a background with the XYZ color 59.8901, 58.2675,

Color Blindness Simulation

Color vision deficiency is a very complex topic, and I could not describe the different causes any better than Wikipedia does, so if you want to learn more, you should check out their [article about color blindness](#).

Dichromacy



Original Color

59.8901, 58.2675, 64.5901

Protanopia

56.4235, 58.4613, 66.7028

Deuteranopia

59.5080, 58.4021, 64.6362



Tritanopia

60.5793, 58.2236, 67.7199

Trichromacy



Original Color

59.8901, 58.2675, 64.5901

Protanomaly

57.7919, 58.4976, 66.0028

Deuteranomaly

59.8098, 58.5577, 64.6504

Tritanomaly

60.3347, 58.1258, 66.4319

Monochromacy



Original Color

59.8901, 58.2675, 64.5901

Achromatopsia

56.7640, 59.7202, 65.0353

Achromatomaly

58.0121, 59.3220, 64.8926

CSS Examples

Text

The CSS property to change the color of the text to XYZ 59.8901, 58.2675, 64.5901 is called "color". The color property can be set on classes, ids or directly on the HTML element.

This example shows how text in the color `rgb(221, 194, 203)` looks like.

```
.text, #text, p{  
    color:rgb(221, 194, 203)  
}
```

If you want to add a text shadow in that color use the text-shadow property, you can generate a text shadow directly with our [CSS Text Shadow Generator](#).

Here you see how black text with a 4 pixel rgb(221, 194, 203) colored shadow looks like.

```
.shadow{ text-shadow: 4px 4px 2px rgb(221, 194, 203) }
```

Border

The CSS property to change the border of an element to XYZ 59.8901, 58.2675, 64.5901 is called "border". The border property can be set on classes, ids or directly on the HTML element.

This example shows the color as border, it can be applied via the CSS property "border" or "border-color".

```
.border, #border, table{ border:4px solid rgb(221, 194, 203) }
```


If only the border color should be changed use the property `border-color`.

```
.border{ border-color:rgb(221, 194, 203) }
```

If you want to add a box shadow in that color use:

Here you see how a box with a 4 pixel `rgb(221, 194, 203)` colored shadow looks like.

```
.boxshadow{ -moz-box-shadow:4px 4px 4px  
4px rgb(221, 194, 203); -webkit-box-  
shadow:4px 4px 4px 4px rgb(221, 194, 203);  
box-shadow:4px 4px 4px 4px rgb(221, 194,  
203) }
```

Background

The CSS property to change the background color of an element to XYZ 59.8901, 58.2675, 64.5901 is called "background". The background property can be set on classes, ids or directly on the HTML element.

```
.background, #background, body{  
background: rgb(221, 194, 203) }
```

If only the background color should be changed can be used:

```
.background{ background-color: rgb(221,  
194, 203) }
```

This example shows the color as background, it is applied via the CSS property "background".

To optimize and compress your CSS code, you can use our [online CSS compressor and optimizer](#) based on csstidy. If you want to create a linear or radial gradient as background or border, check our [CSS Gradient Generator](#).

Hey! You found this booklet interesting? Support Converting Colors with the new Membership Option!

The pro membership hides all ads, plus gives you double the colors in the color bucket, and more awesome pro features!

[Learn more, Memberships starting at \\$2.50/m!](#)

**Follow me
on Twitter!**

@ConvertingColor