

Converting Colors

XYZ(59.9520, 61.4549, 58.5084)

Have a look what the booklet for
XYZ(59.9520, 61.4549, 58.5084)
contains.

XYZ(60.0838, 61.5777, 58.5881)	3
<i>Conversions</i>	4
<i>Details</i>	6
<i>Harmonies</i>	12
<i>Previews</i>	24
<i>Color Blindness Simulation</i>	28
<i>CSS Examples</i>	31

Color

**XYZ(60.0838, 61.5777,
58.5881)**

Conversions

Conversions Part 1

Format	Color
Hex	DBCBC0
RGB	219, 203, 192
RGB Percent	86%, 80%, 75%
CMY	0.1412, 0.2039, 0.2471
CMYK	0.00, 0.07, 0.12, 0.14
HSL	24°, 27%, 81%
HSV	24°, 12%, 86%
XYZ	60.0838, 61.5777, 58.5881
YIQ	206.5300, 13.0670, -0.0290

Conversions

Conversions Part 2

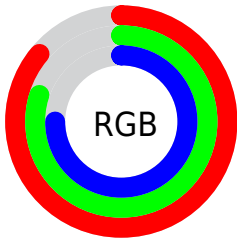
Format	Color
R _Y B	219, 211, 192
Decimal	14404544
CIE Lab	82.69, 3.74, 7.48
CIE LCh	83, 8.362, 63.455
Yxy	61.5777, 0.3333, 0.3416
Android (android.graphics.Color)	4292594624 (0xFFDBCBC0)
YUV	206.5300, -7.1633, 10.9362
Hunter-Lab	78.4715, -0.6517, 10.6631

Details

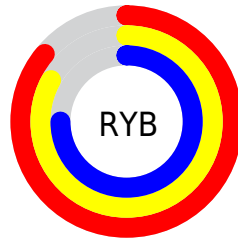
The XYZ color **60.0838, 61.5777, 58.5881** is a light color, and the websafe version is hex **CCCCCC**. A complement of this color would be **57.0801, 61.4316, 75.8675**, and the grayscale version is **59.0460, 62.1210, 67.6498**.

A 20% lighter version of the original color is **93.9433, 99.5573, 103.0721**, and **30.7175, 31.2515, 28.8393** is the 20% darker color. If you saturate the color by 10%, you get **54.8991, 54.8065, 45.7658**, and if you desaturate by 10%, it is **65.8895, 69.0117, 73.4003**.

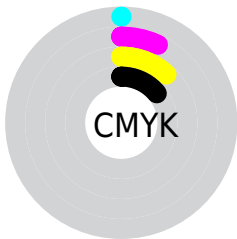
Distribution



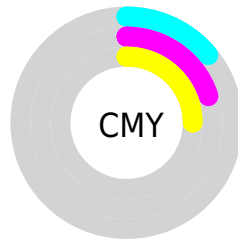
- Red (86%)
- Green (80%)
- Blue (75%)



- Red (86%)
- Yellow (83%)
- Blue (75%)



- Cyan (0%)
- Magenta (7%)
- Yellow (12%)
- Black (14%)



- Cyan (14%)
- Magenta (20%)
- Yellow (25%)

Brightness & Saturation Gradients

These gradients show how the XYZ color 60.0838, 61.5777, 58.5881 changes by changing the brightness by 10 percent. The first figure shows a shift by +10% for each color and the second figure -10%.

Similar to the brightness gradients but the following saturation gradients show a change of the XYZ color 60.0838, 61.5777, 58.5881 by changing the saturation by 10% instead.

■ 60.0838, 61.5777,
58.5881

■ 60.0838, 61.5777,
58.5881

414.7364,
430.3890, 437.0331

■ 43.7359, 44.6916,
41.8638

■ 104.0569,
107.1150, 104.3020

■ 30.6600, 31.2145,
28.6699

132.4128,
136.5349, 134.1287

■ 20.4906, 20.7623,
18.5878

165.5020,
170.9015, 169.1599

■ 12.8625, 12.9503,
11.1990

203.6900,
210.5992, 209.8142

■ 7.4103, 7.3944,
6.0850

247.3421,
256.0124, 256.5101

■ 3.7686, 3.7099,
2.8272

296.8236,

■ 1.5721, 1.5127,

307.5255, 309.6662

1.0071

352.4999,
365.5229, 369.7010

■ 0.3741, 0.2976,
0.0000

■ 0.0000, 0.0000,
0.0000

■ 60.0838, 61.5777,
58.5881

■ 60.0838, 61.5777,
58.5881

■ 54.8991, 54.8065,
45.7658

■ 65.8895, 69.0117,
73.4003

■ 50.3082, 48.6712,
34.8435

■ 72.3320, 77.1183,
90.2789

■ 46.2891, 43.1545,
25.7307

■ 78.9947, 85.7423,
106.9942

■ 42.8166, 38.2355,
18.3273

■ 82.9930, 93.7388,
108.3269

■ 39.8633, 33.8920,
12.5238

■ 83.0237, 93.8002,
108.3372

■ 37.3989, 30.1000,
8.1975

■ 35.3894, 26.8335,
5.2077

■ 33.7949, 24.0633,
3.3857

■ 32.8073, 22.2475,
2.5651

Harmonies

Analogous

The Analogous color harmony consists of three colors that are next to each other on the color wheel.



61.4548, 61.5777, 61.7448



60.0838, 61.5777, 58.5881



58.3200, 61.5777, 57.6571

Triad

The Triadic color harmony groups three colors that are evenly spaced from another and form a triangle on the color wheel.



60.0838, 61.5777, 58.5881



55.1498, 61.5777, 67.6451



60.4511, 61.5777, 75.6373

Complementary

The Complementary color scheme is a pair of colors which are on the opposite of each other on the color wheel.



60.0838, 61.5777, 58.5881



57.0801, 61.4316, 75.8675

Split Complementary

Split-complementary colors differ from the complementary color scheme. The scheme consists of three colors, the original color and two neighbors of the complement color.



58.7360, 61.5777, 77.4062



60.0838, 61.5777, 58.5881



55.6951, 61.5777, 72.6458

Square

The Square scheme is like the rectangle color scheme, but the four colors are evenly spaced on the color wheel.



60.0838, 61.5777, 58.5881



55.4942, 61.5777, 62.7265



56.9988, 61.5777, 76.2847



61.6699, 61.5777, 71.5628

Rectangle

The Rectangle color scheme consists of four colors that form a rectangle on the color wheel.



60.0838, 61.5777, 58.5881



57.1647, 61.5777, 58.3824



56.9988, 61.5777, 76.2847



59.9123, 61.5777, 76.5305

Sweetspot

The Sweet Spot groups the original color and five complimentary colors.



60.0855, 61.5804, 58.5894



91.5533, 95.5652, 99.8468



59.4736, 57.3241, 67.7344



19.4589, 20.2801, 21.0182



0.0000, 0.0000, 0.0000



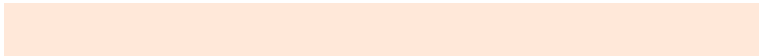
20.3446, 21.4041, 23.3091

Same Dimension

The Same Dimension uses a secret algorithm to generate beautiful new colors.



60.0855, 61.5804, 58.5894



82.6840, 84.1610, 77.3621



63.3614, 68.1322, 59.6814



13.4896, 13.9186, 13.7011



19.5545, 13.3945, 1.5548



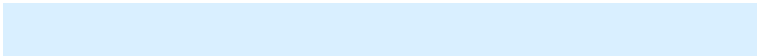
1.3502, 1.0344, 0.1285

Inverse Universe

The Inverse Universe completely reimagines the original color for something new.



57.0801, 61.4316, 75.8675



77.5780, 83.9074, 106.7147



53.9732, 55.2177, 74.8319



12.9767, 13.8932, 16.6498



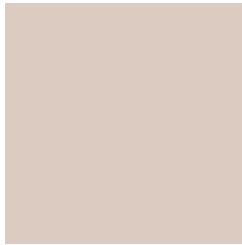
12.4050, 12.6795, 41.5320



0.8876, 0.9892, 2.7186

Previews

White Background



This preview shows how the XYZ color 60.0838, 61.5777, 58.5881 looks on a white background.

Color Contrast Check

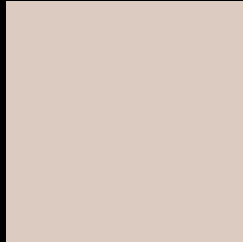
Large Text (above 18pt) WCAG AA × Fail

Any Text WCAG AA × Fail

Large Text (above 18pt) WCAG AAA × Fail

Any Text WCAG AAA × Fail

Black Background



This preview shows how the XYZ color 60.0838, 61.5777, 58.5881 looks on a black background.

Color Contrast Check

Large Text (above 18pt) WCAG AA ✓ Pass

Any Text WCAG AA ✓ Pass

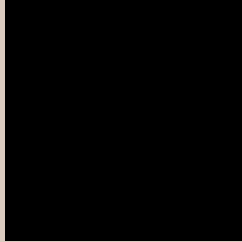
Large Text (above 18pt) WCAG AAA ✓ Pass

Any Text WCAG AAA ✓ Pass

If you want to check with other color combinations, try the [Color Contrast Checker](#).

XYZ 60.0838, 61.5777, 58.5881

Background



This preview shows how black text looks on a background with the XYZ color 60.0838, 61.5777, 58.5881.



This preview shows how white text looks on a background with the XYZ color 60.0838, 61.5777,

Color Blindness Simulation

Color vision deficiency is a very complex topic, and I could not describe the different causes any better than Wikipedia does, so if you want to learn more, you should check out their [article about color blindness](#).

Dichromacy



Original Color

60.0838, 61.5777, 58.5881

Protanopia

58.8975, 61.6590, 59.2492

Deuteranopia

63.0041, 61.6860, 59.0380



Tritanopia

63.0442, 61.7444, 72.8851

Trichromacy



Original Color

60.0838, 61.5777, 58.5881

Protanomaly

59.2428, 61.4831, 59.1971

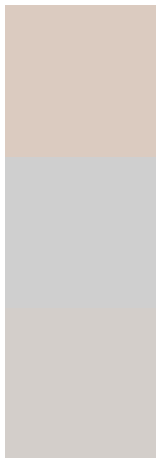
Deuteranomaly

61.9585, 61.4897, 59.0552

Tritanomaly

61.9679, 61.6504, 67.6651

Monochromacy



Original Color

60.0838, 61.5777, 58.5881

Achromatopsia

59.3074, 62.3960, 67.9493

Achromatomaly

59.5959, 62.2558, 64.7526

CSS Examples

Text

The CSS property to change the color of the text to XYZ 60.0838, 61.5777, 58.5881 is called "color". The color property can be set on classes, ids or directly on the HTML element.

This example shows how text in the color rgb(219, 203, 192) looks like.

```
.text, #text, p{  
    color:rgb(219, 203, 192)  
}
```

If you want to add a text shadow in that color use the text-shadow property, you can generate a text shadow directly with our [CSS Text Shadow Generator](#).

Here you see how black text with a 4 pixel rgb(219, 203, 192) colored shadow looks like.

```
.shadow{ text-shadow: 4px 4px 2px rgb(219, 203, 192) }
```

Border

The CSS property to change the border of an element to XYZ 60.0838, 61.5777, 58.5881 is called "border". The border property can be set on classes, ids or directly on the HTML element.

This example shows the color as border, it can be applied via the CSS property "border" or "border-color".

```
.border, #border, table{ border:4px solid rgb(219, 203, 192) }
```


If only the border color should be changed use the property `border-color`.

```
.border{ border-color:rgb(219, 203, 192) }
```

If you want to add a box shadow in that color use:

Here you see how a box with a 4 pixel `rgb(219, 203, 192)` colored shadow looks like.

```
.boxshadow{ -moz-box-shadow:4px 4px 4px  
4px rgb(219, 203, 192); -webkit-box-  
shadow:4px 4px 4px 4px rgb(219, 203, 192);  
box-shadow:4px 4px 4px 4px rgb(219, 203,  
192) }
```

Background

The CSS property to change the background color of an element to XYZ 60.0838, 61.5777, 58.5881 is called "background". The background property can be set on classes, ids or directly on the HTML element.

```
.background, #background, body{  
background: rgb(219, 203, 192) }
```

If only the background color should be changed can be used:

```
.background{ background-color: rgb(219,  
203, 192) }
```

This example shows the color as background, it is applied via the CSS property "background".

To optimize and compress your CSS code, you can use our [online CSS compressor and optimizer](#) based on csstidy. If you want to create a linear or radial gradient as background or border, check our [CSS Gradient Generator](#).

Hey! You found this booklet interesting? Support Converting Colors with the new Membership Option!

The pro membership hides all ads, plus gives you double the colors in the color bucket, and more awesome pro features!

[Learn more, Memberships starting at \\$2.50/m!](#)

**Follow me
on Twitter!**

@ConvertingColor